



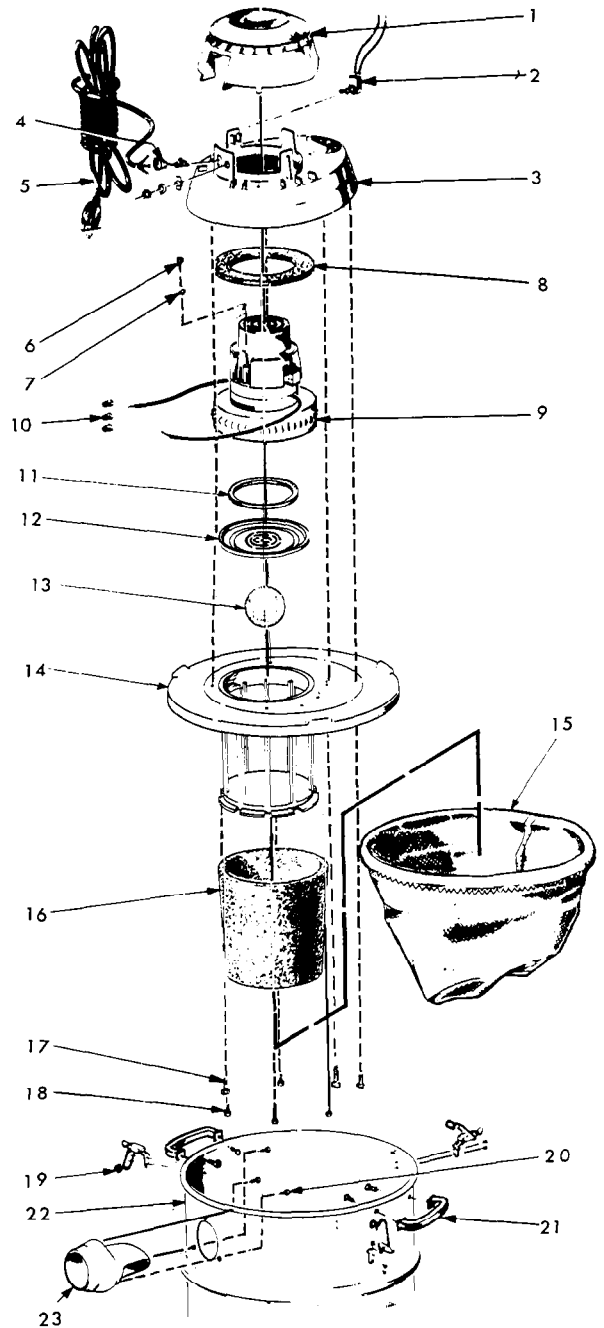
# SERVICE PARTS LIST

**BULLETIN NO.**  
54-05-0550

SPECIFY CATALOG NO. AND SERIAL NO. WHEN ORDERING PARTS		REVISED BULLETIN	DATE
12 GALLON WET OR DRY VACUUM CLEANER			July '79
CATALOG NO. 8955	STARTING SERIAL NO. SERIES II	WIRING INSTRUCTION	

FIG. PART NO.	DESCRIPTION OF PART	NO. REQ.
1	31-15-0135 Housing Cap	(1)
2	23-66-0880 Switch	(1)
3	31-50-0175 Motor Housing	(1)
4	22-90-0145 Strain Relief Bushing	(1)
5	22-64-0136 Power Cord	(1)
6	06-95-5319 10x3/8 Ground Screw	(1)
7	06-97-3400 10 Split Lockwasher	(1)
8	43-44-0540 Motor Top Gasket	(1)
9	23-30-0160 Motor	(1)
10	22-56-0160 Wire Connector	(3)
11	43-44-0565 Motor Bottom Gasket	(1)
12	44-66-5360 Motor Plate	(1)
13	42-46-0100 Ball Float	(1)
14	31-15-0145 Plastic Cover Lid	(1)
15	49-90-0285 Cloth Filter	(1)
16	49-90-0770 Foam Sleeve	(1)
17	06-95-5390 10x2-3/4 Lg. Slit. H. H. Screw	(3)
18	06-95-5330 10x3/4 Lg. Slit. H. H. Screw	(4)
19	42-68-0410 Buckle	(3)
20	06-95-5315 No. 10x1/2 Lg. Slit. H. H. Screw	(3)
21	31-44-0395 Handle Pkg. (2Handle & Screws)	(1)
22	45-66-0085 Tank	(1)
23	42-86-0120 Inlet Fitting	(1)

SEE REVERSE SIDE OF THIS BULLETIN  
FOR VACUUM CLEANER DOLLY



## VACUUM CLEANER DOLLY

FIG.	PART NO.	DESCRIPTION OF PART	NO. REQ.
1	43-62-0725	Handle	(1)
2	42-38-0170	Bumper	(1)
3	42-68-0430	Clamp	(2)
4	42-36-1230	Sliding Latch	(2)
5	06-75-0073	1/4-20x3/8" Hex. Hd. Mach. Screw	(4)
6	43-62-0730	Upright Handle	(2)
7	43-40-0190	Back Frame	(1)
8	43-40-0195	Main Frame	(1)
9	45-88-7490	1/2" Flat Washer	(4)
10	45-94-0210	10" Wheel	(2)
11	42-12-0100	Axle	(1)
12	42-52-0270	Hub Cap	(2)
13	06-75-0019	No. 10-24x5/8" Hex. Hd. Mach. Screw	(4)
14	06-97-3400	No. 10 Split Lockwasher	(4)
15	06-55-1000	No. 10-24 Hex Nut	(4)
16	44-66-5350	Castor Support Plate	(1)
17	06-75-0100	1/4-20x3/4" Hex Hd. Mach. Screw	(2)
18	06-97-4050	1/4" Split Lockwasher	(2)
19	06-55-1525	1/4-20 Hex Nut	(2)
20	45-94-0220	Castor	(1)
21	06-97-1400	5/16" Split Lockwasher	(1)
22	06-55-1985	5/16-18 Hex Nut	(1)
23	45-88-7495	No. 10 Flat Washer	(4)
24	45-88-7500	1/4" Flat Washer	(6)
25	06-55-1510	1/4"-20 Acorn Nut	(4)
26	45-88-7510	Rubber Washer	(4)

