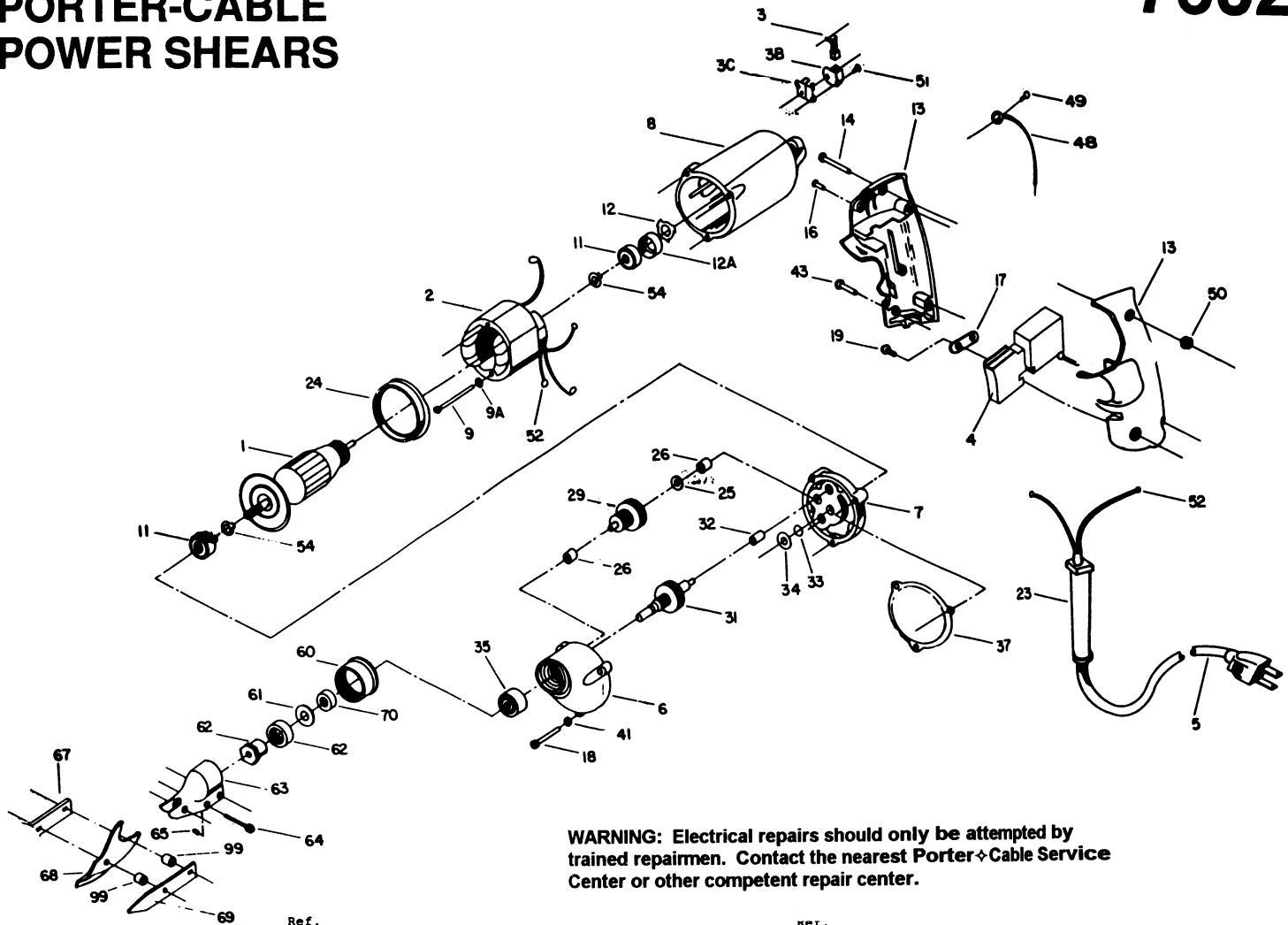


PORTER-CABLE POWER SHEARS



WARNING: Electrical repairs should only be attempted by trained repairmen. Contact the nearest Porter-Cable Service Center or other competent repair center.

| Ref. No. | Part No. | Description | Ref. No. | Part No. | Description |
|----------|----------|--|----------|----------|----------------------------|
| 1 | 872640 | Armature, T3 | 43 | 841644 | Screw |
| | 698198 | Armature, T2 | 48 | 690774 | Lead Assy |
| | 865733 | Armature, T1 | 49 | 864137 | Screw |
| 2 | 872646 | Field, T3 | 50 | 828841 | Nut |
| | 696284 | Field, T1, T2 | 51 | 864136 | Brush Holder Screw |
| 3 | 869734 | Brush | 52 | 849314 | Terminal |
| 3B | 869691 | Brush Holder | 54 | 847564 | Ring (Service Only) |
| 3C | 811490 | Brush Insulator | 60 | 696051 | Adaptor Ring |
| 4 | 698303 | Switch, T2, T3 | 61 | 696052 | Spacer |
| | 696066 | Switch, T1 | 62 | 696286 | Eccentric Nut & Brg. Assy. |
| 5 | 695854 | Cord | 63 | 696302 | Housing |
| 6 | 697884 | Gear Hsg., T2, T3, Incl: Ref. 26 | 64 | 696291 | Screw |
| | 696037 | Gear Hsg., T1, Incl: Ref. 26 | 65 | 696292 | Threaded Insert |
| 7 | 697684 | Int. Plt., T2, T3, Incl: | 67 | 12624 | Blade, R. H. |
| | | Ref. 11, 26, 32 | 68 | 12622 | Blade, Center |
| | 868599 | Int. Plt., T1, Incl: | 69 | 12623 | Blade, L. H. |
| | | Ref. 11, 26, 32 | 70 | 696038 | Spacer |
| 8 | 697543** | Motor Hsg. T2, T3, Incl: Ref. 9, 9A, 18 | 99 | 696293 | Bushing |
| | 868219** | Motor Hsg. T1, Incl: Ref. 12A | * | 811292 | Fan |
| | 699085** | Self-Tapping Screw, Late T2, T3 | * | 801945 | Gear Lubricant (5 1/2 oz) |
| | 841941** | Machine Screw T1, Early T2 | * | 801946 | Gear Lubricant (4 lbs) |
| 9A | 802214 | Washer, Late T2, T3 | * | 18338 | Shear Head |
| 11 | 855284 | Armature Bearing | * | | Lubricant (5 1/2 oz.) |
| 12 | 842610 | Spring | * | 695706 | Shear Head |
| 13 | 698454 | Handle Assy. T2, T3, Incl: Ref. 14, 16, 17, 19, 43, 50 | * | 48245 | Lubricant (5 lbs.) |
| | 696006 | Handle Assy. T1, Incl: Ref. 14, 16, 17, 19, 43, 50 | * | 842323 | Allen Wrench |
| 14 | 865643 | Screw | | | Wrench Holder |
| 15 | 859384 | Screw | | | |
| 16 | 866340 | Screw | | | |
| 17 | 861434 | Cord Clamp | | | |
| 18 | 694015** | Self-Tapping Screw, Late T2, T3 | | | |
| | 865682** | Machine Screw T1, Early T2 | | | |
| 19 | 859227 | Screw | | | |
| 23 | 810882 | Strain Reliever | | | |
| 24 | 811350 | Baffle | | | |
| 25 | 848741 | Washer | | | |
| 26 | 693808 | Needle Bearing, T2, T3 | | | |
| | 848131 | Needle Bearing, T1 | | | |
| 29 | 697673 | Idler Assy, T2, T3 | | | |
| | 853292 | Idler Assy, T1 | | | |
| 31 | 697874 | Spindle Assy, T2, T3 | | | |
| | 696050 | Spindle Assy, T1 | | | |
| 32 | 693808 | Needle Bearing, T2, T3 | | | |
| | 839837 | Needle Bearing, T1 | | | |
| 33 | 802851 | O-Ring (Early Version Only) | | | |
| 34 | 852714 | Slinger | | | |
| 35 | 855206 | Bearing | | | |
| 37 | 697203 | Gasket (Current) | | | |
| 41 | 802648 | Lockwasher | | | |

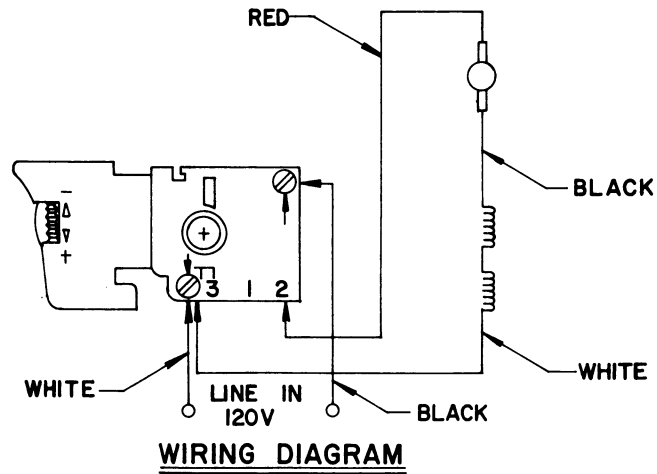
*Not Shown

**See Service Notes

7602

SERVICE NOTES

WIRING DIAGRAM



MOTOR HOUSING/SCREWS T2

Early motor housings had threaded inserts molded in for gear housing screws and field screws. Current motor housings do not have inserts and require self-tapping screws.

Service replacement housings will be the current type and will include the necessary self-tapping screws.