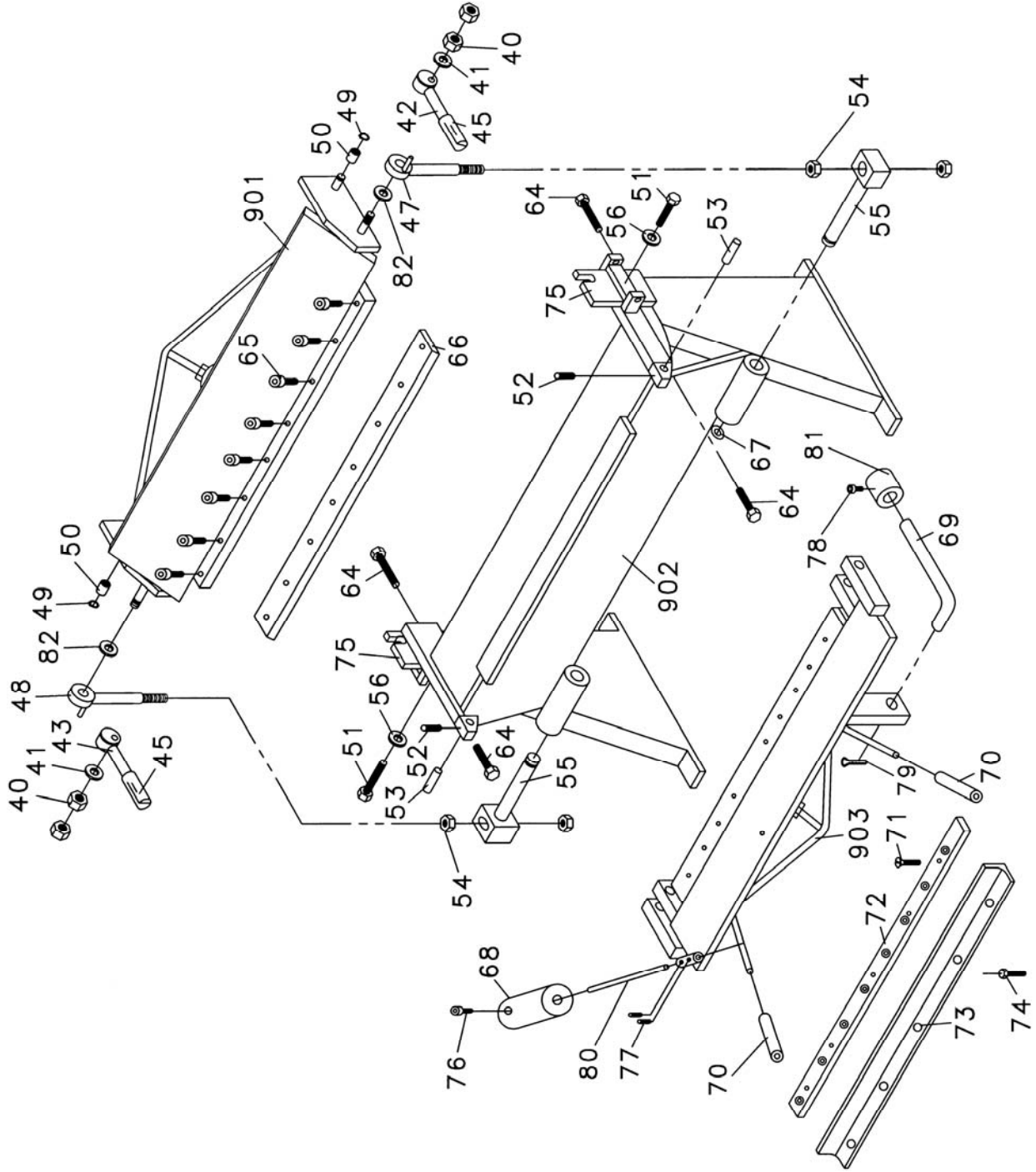


Breakdown for the HB-1648H & HB-2248H Hand Brake



Parts List for the HB-1648H & HB-2248H Hand Brake

Index No.	Part No.	Description	Size	Quantity
901	HB1648N-901	Hold Down Assembly		1
	HB2248N-901	Hold Down Assembly		1
902	HB1648N-902	Base Assembly		1
	HB2248N-902	Base Assembly		1
903	HB1648N-903	Apron Assembly		1
	HB2248N-903	Apron Assembly		1
40	HB1648N-40	Lock Nut	M16	4
41	HB1648N-41	Flat Washer	M16	2
42	HB1648N-42	Clamp Handle R.H.		1
43	HB1648N-43	Clamp Handle L.H.		1
45	HB1648N-45	Handgrip		2
47	HB1648N-47	Yoke Assembly R.H.		1
48	HB1648N-48	Yoke Assembly L.H.		1
49	HB1648N-49	Retainer Ring	12	2
50	HB1648N-50	Bushing		2
51	HB1648N-51	Hex Cap Screw	M12x30	2
52	HB1648N-52	Set Screw	M6x10	2
53	HB1648N-53	Hinge Pin		2
54	HB1648N-54	Hex Nut	M16	4
55	HB1648N-55	Swivel Pin		2
56	HB1648N-56	Washer	M12	2
64	HB1648N-64	Hex Cap Screw	M8x50	4
65	HB1648N-65	Screw	M8x10	8
66	HB1648N-66	Holddown		1
67	HB1648N-67	C-Clip	22	2
68	HB1648N-68	Counter Weight		1
69	HB1648N-69	Stop Rod		1
70	HB1648N-70	Pipe		2
71	HB1648N-71	Flat Head Screw	M8x16	8
72	HB1648N-72	Blade		1
73	HB1648N-73	Angle Support		1
74	HB1648N-74	Hex Cap Screw	M8x25	5
75	HB1648N-75	Step Bracket L & R		2
76	HB1648N-76	Socket Head Cap Screw	M8x30	1
77	HB1648N-77	Set Screw	M8x10	2
78	HB1648N-78	Socket Head Cap Screw	M10x14	1
79	HB1648N-79N	Cotter Pin	2x20	1
80	HB1648N-80	Rod		1
81	HB1648N-81	Stop		1
82	HB1648N-82	Flat Washer	M20	2
	HB1648N-ID	ID Label (not shown)		1
	HB2248N-ID	ID Label (not shown)		1
	HB1648N-W	Warning Label (not shown)		1
	HB1648N-J	JET Label (not shown)		1