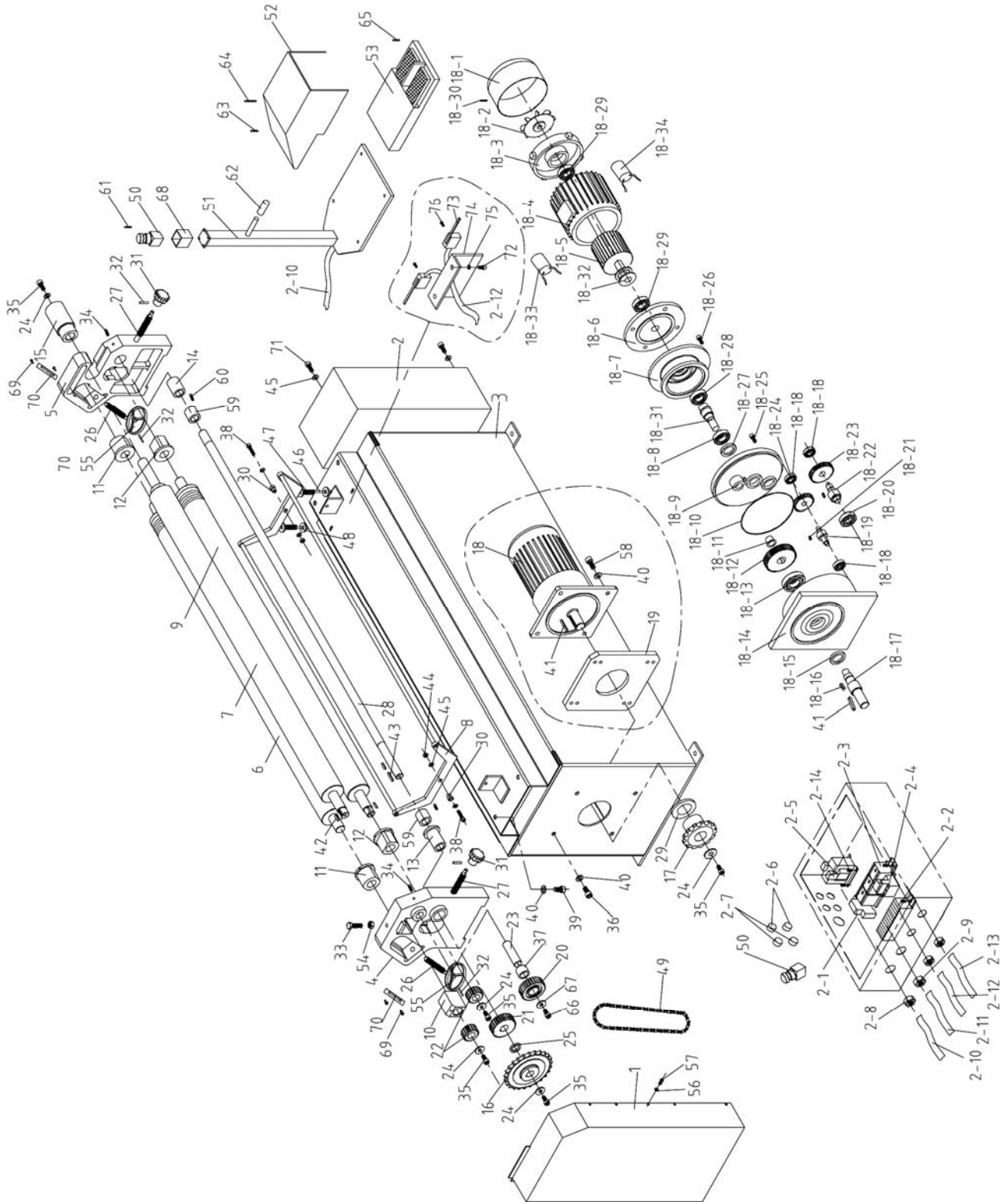


Replacement Parts

To order parts or reach our service department, call 1-800-274-6848, Monday through Friday (see our website for business hours, www.waltermeier.com). Having the Model Number and Serial Number of your machine available when you call will allow us to serve you quickly and accurately.

Assembly Drawing for ESR-1650T



Parts List for ESR-1650T

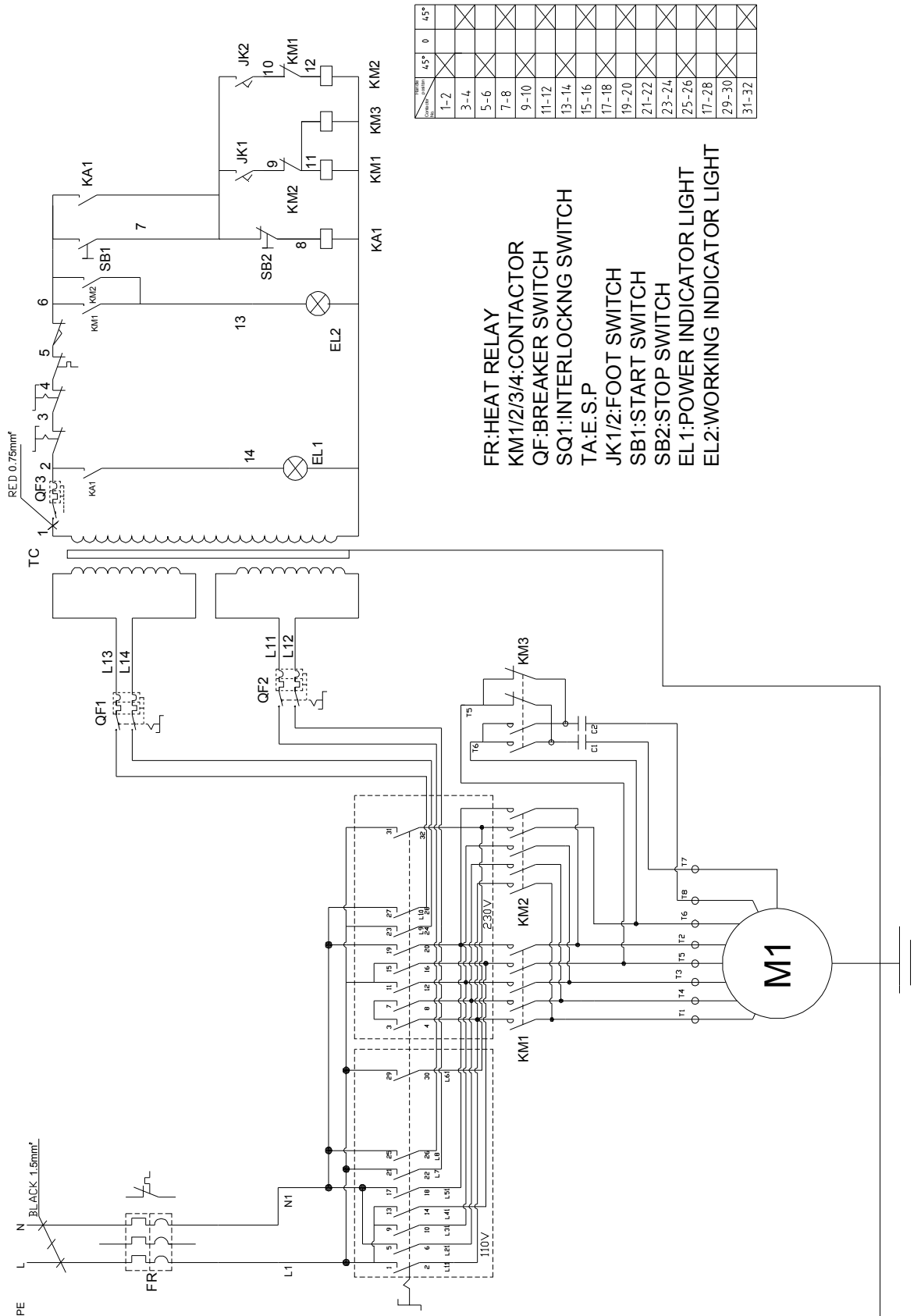
Index No	Part No	Description	Size	Qty
1	ESR1650T-1	Side Cover		1
2	ESR1650T-2	Electric Box		1
2-1	ESR1650T-2-1	Short & Overload Protection	Ω1A	1
2-2	ESR1650T-2-2	Junction Terminal		1
2-3	ESR1650T/3-2-3	A.C. Contactor	three phase	3
	ESR1650T/1-2-3	A.C. Contactor	single phase	4
2-4	ESR1650T/3-2-4	Thermal Relay	2.4-3.6A (3PH)	1
	ESR1650T/1-2-4	Thermal Relay	5.5-8.5A (1PH)	1
2-5	ESR1650T/3-2-5	Transformer	AC 460 230/24V	1
	ESR1650T/1-2-5	Transformer	AC 230 115/24V	1
2-6	ESR1650T-2-6	Power Indicator	AC24V	2
2-7	ESR1650T-2-7	Power On/Off Button	25A	2
2-8	ESR1650T-2-8	Strain Relief	M18	3
2-9	ESR1650T/3-2-9	Strain Relief for 230/460V-3PH	M18	1
	ESR1650T/1-2-9	Strain Relief for 115/230V-1PH	M20	1
2-10	ESR1650T-2-10	Cable for Foot Pedal	Ø16 mm	1
2-11	ESR1650T/3-2-11	Motor Cable	4x1.5mm 230/460V-3PH	1
	ESR1650T/1-2-11	Motor Cable	7x1.5mm 115/230V-1PH	1
2-12	ESR1650T-2-12	Cable for Microswitch		1
2-13	ESR1650T/3-2-13	Power Cord for 3 PH	4x1.5mm 230/460V-3PH	1
	ESR1650T/1-2-13	Power Cord for 1 PH	3x1.5mm 115/230V-1PH	1
2-14	TS-1532032	Phillips Pan Head Machine Screw	M4x10	12
3	ESR1650T-3	Stand		1
4	ESR1650T-4	Left Support		1
5	ESR1650T-5	Right Support		1
6	ESR1650T-6	Rear Roll		1
7	ESR1650T-7	Upper Roll		1
8	ESR1650T-8	Safety Bracket		1
9	ESR1650T-9	Lower Roll		1
10	ESR1650T-10	Square Bushing Upper Roll		1
11	ESR1650T-11	Bushing Rear Roll		2
12	ESR1650T-12	Bushing Lower Roll		2
13	ESR1650T-13	Left Bushing Trans Shaft		1
	ESR1650T-13A	Left Bushing Trans Shaft <i>(for serial nos. over 11110037)</i>		1
14	ESR1650T-14	Right Bushing Trans Shaft		1
	ESR1650T-14A	Right Bushing Trans Shaft <i>(for serial nos. over 11110037)</i>		1
15	ESR1650T-15	Sleeve Handle		1
16	ESR1650T-16	Large Sprocket	P=19.05 Z=25	1
17	ESR1650T-17	Small Sprocket	P=19.05 Z=13	1
18	ESR1650T/3-18	Motor, 220/440V-3PH	0.75kW, 4P	1
	ESR1650T/1-18	Motor, 115/230V-1PH	1.1kW, 4P	1
18-1	ESR1650T-18-1	Motor Fan Cover		1
18-2	ESR1650T-18-2	Motor Fan		1
18-3	ESR1650T-18-3	Housing Cover		1
18-4	ESR1650T/3-18-4	Stator	230/460V-3PH	1
	ESR1650T/1-18-4	Stator	115/230V-1PH	1
18-5	ESR1650T/3-18-5	Rotor	230/460V-3PH	1
	ESR1650T/1-18-5	Rotor	115/230V-1PH	1
18-6	ESR1650T-18-6	Flange Plate		1
18-7	ESR1650T-18-7	Flange Plate Input Shaft		1
18-8	BB-6205	Ball Bearing	Φ52XΦ25X15	1
18-9	ESR1650T-18-9	Reducer Cover		1
18-10	ESR1650T-18-10	O-ring	Φ180XΦ2.6 mm	1
18-11	ESR1650T-18-11	Bushing		1
18-12	ESR1650T-18-12	Gear		1
18-13	BB-6207	Ball Bearing	Φ72XΦ35X7 mm	1

Index No	Part No	Description	Size	Qty
18-14	ESR1650T-18-14	Housing		1
18-15	ESR1650T-18-15	Oil Seal	Φ50XΦ35X7 mm	1
18-16	ESR1650T-18-16	Key	8x25 mm	1
18-17	ESR1650T-18-17	Output Shaft		1
18-18	BB-6301	Ball Bearing	Φ37XΦ12X12	3
18-19	ESR1650T-18-19	Gear Shaft		1
18-20	BB-6303	Ball Bearing	Φ52XΦ15X12	1
18-21	ESR1650T-18-21	Key	5X12 mm	1
18-22	ESR1650T-18-22	Gear Shaft		1
18-23	ESR1650T-18-23	Gear		1
18-24	ESR1650T-18-24	Gear		1
18-25	TS-1503061	Socket Head Cap Screw	M6X25	3
18-26	ESR1650T-18-26	Bolt	M5X25	3
18-27	ESR1650T-18-27	Oil Seal	Φ37XΦ17X7	1
18-28	BB-6208	Ball Bearing	Φ80XΦ40X18	1
18-29	BB-6205	Ball Bearing	Φ52XΦ25X12	2
18-30	ESR1650T-18-30	Screw	M4X8	3
18-31	ESR1650T-18-31	Connecting Shaft		1
18-32	ESR1650T/1-18-32	Centrifugal Switch for 1PH only		1
18-33	ESR1650T/1-18-33	Start Capacitor for 1PH only	35uf	1
18-34	ESR1650T/1-18-34	Run Capacitor for 1PH only	200uf	1
19	ESR1650T-19	Motor Mount		1
20	ESR1650T-20	Gear	m=2.5 z=30	1
21	ESR1650T-21	Drive Gear	m=2.5 z=30	1
22	ESR1650T-22	Driven Gear	m=2.5 z=18	2
23	ESR1650T-23	Gear Wheel Shaft		1
24	TS-1550071	Flat Washer	Φ10 mm	6
25	ESR1650T-25	Adjusting Washer	Φ35XΦ25.5X5 mm	1
26	ESR1650T-26	Bolt for Adjusting Roller		2
27	ESR1650T-27	Bolt for Auxiliary Roller		2
28	ESR1650T-28	Transmission Shaft		1
29	ESR1650T-29	Washer		1
30	ESR1650T-30	Bushing		2
31	ESR1650T-31	Handle		4
32	ESR1650T-32	Pin		4
33	ESR1650T-33	Bolt	M12X55	1
34	TS-1524051	Set Screw	M8x20	2
35	TS-1491021	Hex Cap Screw	M10x20	5
36	ESR1650T-36	Bolt	M12x25	4
37	ESR1650T-37	Bushing		1
38	ESR1650T-38	Screw	M8X40	2
39	TS-1492031	Hex Cap Screw	M12X35	4
40	TS-2360121	Flat Washer	Φ12 mm	8
41	ESR1650T-41	Key	8X45 mm	1
42	ESR1650T-42	Key	6X25 mm	3
43	ESR1650T-43	Key	6X40 mm	1
44	TS-2311081	Nut	M8	2
45	TS-1550061	Flat Washer	Φ8 mm	4
46	ESR1650T-46	Worm Rod		2
47	ESR1650T-47	Lock Spring		2
48	ESR1650T-48	Flat Washer		4
49	ESR1650T-49	Chain		1
50	ESR1650T-50	Emergency Switch		1
51	ESR1650T-51	Pole		1
52	ESR1650T-52	Box Cover		1
53	ESR1650T-53	Pedal Switch		1
54	TS-1540081	Nut	M12	1
55	ESR1650T-55	Wheel		2
56	TS-1540041	Flat Washer	Φ6 mm	5

Index No	Part No	Description	Size	Qty
57	TS-2246162	Socket Head Button Screw	M6X16	5
58	TS-1505051	Socket Head Cap Screw	M10x35	4
59	ESR1650T-59	Connecting Bushing		2
60	ESR1650T-60	Fixing Screw	M6x8	2
61	ESR1650T-61	Cross Head Screw	M6x65	4
62	ESR1650T-62	Handle Sleeve		1
63	TS-2285302	Phillips Pan Head Machine Screw	M5x30	2
64	ESR1650T-64	Cross Head Screw	M5x95	2
65	TS-1534052	Phillips Pan Head Machine Screw	M6x16	4
66	TS-1482041	Hex Cap Screw	M6x20	1
67	TS-1540041	Flat Washer	Φ6 mm	1
68	ESR1650T-68	Switch Box		1
69	ESR1650T-69	Rivet for Scale	Φ2×6 mm	4
70	ESR1650T-70	Scale		2
71	TS-1490031	Hex Cap Screw	M8×20	2
72	TS-1482031	Hex Cap Screw	M6×16	2
73	ESR1650T-73	Microswitch		2
74	ESR1650T-74	Microswitch Mount		1
75	ESR1650T-75	Washer	Φ6 mm	2
76	ESR1650T-76	Screw	M4X10	4

Wiring Diagram for ESR-1650T-1

(Single Phase only)



Wiring Diagram for ESR-1650T-3

(Three Phase only)

