



Operating Instructions and Parts Manual Electric Pinch Roll Bender

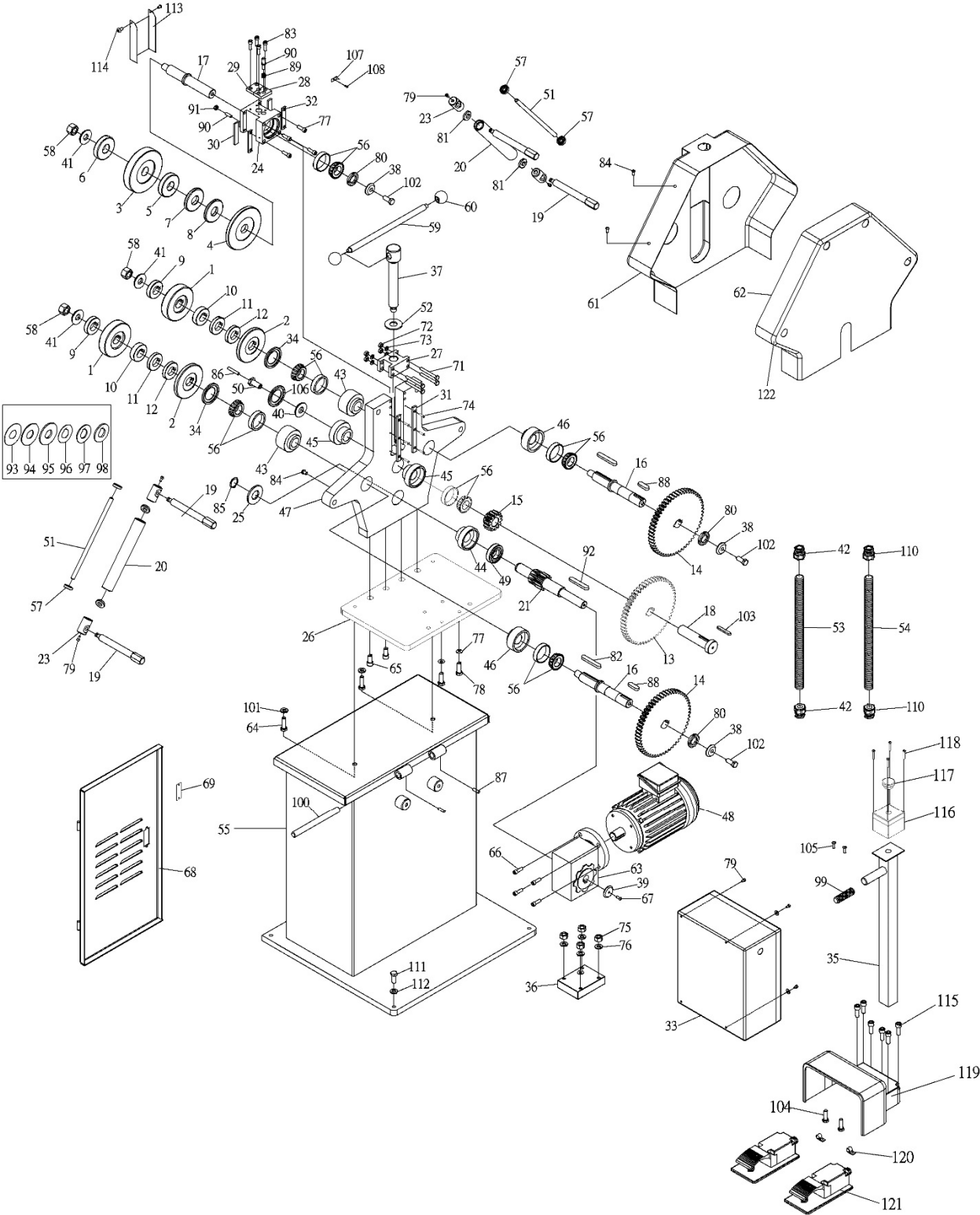
Model EPR-2



JET
427 New Sanford Road
LaVergne, Tennessee 37086
Ph.: 800-274-6848
www.jettools.com

Part No. M-754435
Edition 2 12/2016
Copyright © 2016 JET

12.1.1 EPR-2 Electric Pinch Roll Bender – Exploded View



12.1.2 EPR-2 Electric Pinch Roll Bender – Parts List

Index No.	Part No.	Description	Size	Qty
1	EPR2-1	Pleated Roller-A	Ø118XØ30X27	2
2	EPR2-2	Pleated Roller-B	Ø118XØ30X12	2
3	EPR2-3	Roller-C	Ø147XØ30X27	1
4	EPR2-4	Roller-D	Ø147XØ30X12	1
5	EPR2-5	Roller-E	Ø78XØ30X17	1
6	EPR2-6	Roller-F	Ø78XØ30X14	1
7	EPR2-7	Roller-G	Ø78XØ30X11	1
8	EPR2-8	Roller-H	Ø78XØ30X9	1
9	EPR2-9	Pleated Roller-I	Ø59XØ30X14	2
10	EPR2-10	Pleated Roller-J	Ø59XØ30X17	2
11	EPR2-11	Pleated Roller-K	Ø59XØ30X11	2
12	EPR2-12	Pleated Roller-L	Ø59XØ30X9	2
13	EPR2-13	Double Key Gear	T55	1
14	EPR2-14	Gear	T55	2
15	EPR2-15	Following Gear	T14	1
16	EPR2-16	Spindle-B		2
17	EPR2-17	Spindle-C		1
18	EPR2-18	Transmission Rod		1
19	EPR2-19	Adjusting Rod		4
20	EPR2-20	Guide Roller		2
21	EPR2-21	Spindle-A		1
23	EPR2-23	Packing		4
24	EPR2-24	Fixing Block		1
25	EPR2-25	Washer-H	Ø65XØ30X5	1
26	EPR2-26	Raising Block		1
27	EPR2-27	Adjusting Block		1
28	EPR2-28	Left Packing		1
29	EPR2-29	Right Packing		1
30	EPR2-30	Thread Steel Packing		4
31	EPR2-31	Steel Packing		4
32	EPR2-32	Non-Thread Steel Packing		2
33	EPR2-33	Control Box		1
34	EPR2-34	Plastic Washer	Ø70.5XØ43.6X5	3
35	EPR2-35	Post		1
36	EPR2-36	Block		1
37	EPR2-37	Rod		1
38	EPR2-38	Washer-B	Ø40XØ12.5X5	3
39	EPR2-39	Washer-D	Ø40XØ6X5	1
40	EPR2-40	Washer-E	Ø50XØ16X7	1
41	EPR2-41	Washer-G	Ø50XØ20X7	3
42	EPR2-42	Wire Tube Bushing	1/2"	2
43	EPR2-43	Ball Bearing Cover-A		2
44	EPR2-44	Ball Bearing Cover-D		1
45	EPR2-45	Ball Bearing Cover-B		2
46	EPR2-46	Ball Bearing Cover-C		2
47	EPR2-47	Head Set		1
48	EPR2-48	Motor		1
49	BB-6206Z	Ball Bearing	30X62X16mm w/1 Shield	1
50	EPR2-50	Hex Head Rod		1
51	EPR2-51	Support Rod		2
52	EPR2-52	Index Plate		1
53	EPR2-53	Wire Tube-A	1/2"x2m	1
54	EPR2-54	Wire Tube-B	3/8"x600	1
55	EPR2-55	Base		1
56	BB-30206J	Ball Bearing	30206J	8
57	BB-6001	Ball Bearing	6001	4
58	F003128	Hex Nut, BO	M20	3
59	EPR2-59	Rod		1
60	EPR2-60	Handle Grip	M12	2
61	EPR2-61	Front Cover		1

Index No.	Part No.	Description	Size	Qty
62	EPR2-62	Rear Cover		1
63	EPR2-63	Reducing Gearbox		1
64	TS-1506041	Socket Head Cap Screw	M12X35	2
65	TS-1506021	Socket Head Cap Screw	M12X25	4
66	TS-1490031	Hex Cap Screw	M8X20	4
67	TS-2246162	Socket HD Button Screw	M6X16	1
68	EPR2-68	Door		1
69	EMN9-90	Door Latch		1
71	EPR2-71	Hex Head Rod	M8X70	4
72	EPR2-72	Nut	M8	4
73	EPR2-73	Spring Washer	M8	4
74	TS-1512011	Socket HD Flat Screw	M4X10	6
75	TS-1540061	Hex Nut	M8	4
76	TS-2361081	Lock Washer	M8	4
77	TS-1550061	Flat Washer	M8	4
78	F005412	Socket HD Cap Screw	M8x65	4
79	TS-1502021	Socket HD Cap Screw	M5x10	8
80	EPR2-80	Lock Nut	AN-06	3
81	BB-6001	Ball Bearing	6001	4
82	EPR2-82	Parallel Key	8x7x70mm	2
83	TS-2246162	Socket HD Button Screw	M6X16	4
84	TS-2246122	Socket HD Button Screw	M6X12	6
85	6294573	C-Ring	S30	1
86	EPR2-86	Set Screw	M8X40	1
87	TS-1524021	Socket Set Screw	M8x10	2
88	EPR2-88	Parallel Key	8X7X19	3
89	EPR2-89	Spring	Ø10X1.0X17	1
90	TS-1524061	Socket Set Screw	M8x25	4
91	TS-1541031	Hex Nut, Nylon Lock	M8	4
92	EPR2-92	Parallel Key	8X7X65	1
93	EPR2-93	Spacer Ring-A	Ø78XØ30X1.0	1
94	EPR2-94	Spacer Ring-B	Ø78XØ30X2.0	1
95	EPR2-95	Spacer Ring-C	Ø78XØ30X5.0	1
96	EPR2-96	Spacer Ring-D	Ø59XØ30X1.0	2
97	EPR2-97	Spacer Ring-E	Ø59XØ30X2.0	2
98	EPR2-98	Spacer Ring-F	Ø59XØ30X5.0	2
99	EPR2-99	Plastic Grip		1
100	EPR2-100	Rod	Ø18X200	1
101	EPR2-101	Lock Washer	Ø1/2XØ23X2.5	2
102	TS-1492011	Hex Cap Screw	M12x25	2
103	EPR2-103	Parallel Key	8X45	1
104	TS-0050011	Hex Cap Screw	1/4-20x1/2	2
105	EPR2-105	Phillips Head Screw	M4x8	2
106	EPR2-106	Plastic Washer-A		1
107	EPR2-107	Indicator		1
108	F001200	Mach Screw, Pan HD, Phillips	M5X6	1
110	EPR2-110	Wire Tube Bushing	3/8"	2
111	EPR2-111	Tapping Hex Head Screw	5/16"x1 1/2"	2
112	TS-0720081	Lock Washer	MEDIUM 5/16	2
113	EPR2-113	Cover		1
114	TS-2245102	Socket HD Button Screw	M5X10	2
115	TS-1533052	Mach Screw, Pan HD, Phillips	M5x16	6
116	EPR2-116	Emergency Stop Switch Box		1
117	EPR2-117	Emergency Stop Switch		1
118	EPR2-118	Oval Csunk Hd Mach Screw	M4x45	4
119	EPR2-119	Foot Pedal Cover		1
120	EPR2-120	Wire Clip		2
121	EPR2-121	Foot Pedal Switch Assembly		2
122	EPR2-122	Rubber Edging	10x1460 mm	1

Index No.	Part No.	Description	Size	Qty
.....	JET-165.....	JET Logo (not shown)	165x68 mm	1
.....	LM000226	ID Label, EPR-2 (not shown)		1
.....	LM000223	Warning Label (not shown).....		1
.....	LM000231	Label – Roller Direction (not shown).....		1
.....	LM000232	Warning Label – Pinch Point (not shown)		1
.....	LM000233	Label – Bending Chart (not shown).....		1