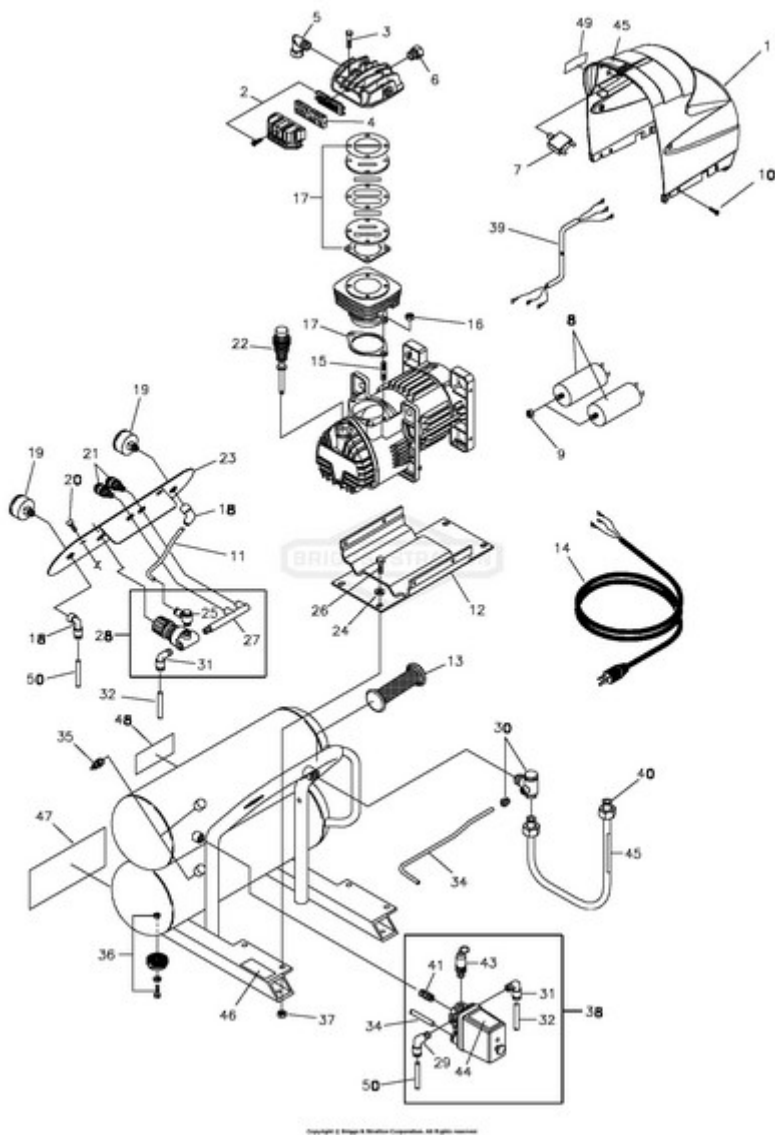


### 074001-0 - 4.9 CFM Twintank - Main Unit



Ref #	Part #	Description	Qty	Context Note	Foot Note
1	200690GS	KIT, Shroud, Plastic		(Includes #45 & 49)	
2	200687GS	KIT, Air Filter			
3	200684GS	SCREW, M6 x 40			
4	200697GS	FILTERING ELEMENT			
5	200685GS	CONNECTOR, Elbow			
6	200688GS	VALVE, Start			
7	200717GS	BREAKER, Circuit, 17A			
8	200694GS	CAPACITOR			
9		NUT, M8		(Purchase locally)	
10		SCREW, Taptite M5 x 20		(Purchase locally)	
11	199961GS	HOSE, Rilsan		(cut to fit)	
12	200984GS	BASE			
13	200682GS	HANDLE			
14	200720GS	ASSY, Cable, Power			
15		STUD BOLT		(Purchase locally)	
16		NUT, M8		(Purchase locally)	
17	200718GS	KIT, Valve Plate			
18	200985GS	CONNECTOR, Elbow			
19	200680GS	GAUGE, Pressure			
20		PPHMS, 5 x 12		(Purchase locally)	
21	200677GS	COUPLER, Quick Connect			
22	200691GS	DIPSTICK, Oil			
23	200704GS	KIT, Panel, Instrumental			
24		WASHER		(Purchase locally)	
25	200986GS	CONNECTOR, Elbow			
26		HHCS, M8 x 25		(Purchase locally)	
27	200706GS	MANIFOLD			
28	200995GS	ASSY, Pressure Regulator			
29	200992GS	CONNECTOR, Elbow			
30	200674GS	VALVE, Non Return			
31	200988GS	CONNECTOR, Elbow			
32	200989GS	HOSE, Rilsan			
34	199961GS	HOSE, Rilsan			
35	200675GS	VALVE, Drain			
36	192310GS	KIT, Vib Mount			
37		NUT		(Purchase locally)	
38	200994GS	ASSY, Pressure Switch			
39	200910GS	WIRE HARNESS			
40	200703GS	KIT, Tube, Infeed			
41	201697GS	ADAPTER			
43	200678GS	VALVE, Safety			

<b>Ref #</b>	<b>Part #</b>	<b>Description</b>	<b>Qty</b>	<b>Context Note</b>	<b>Foot Note</b>
44	199176GS	DECAL, Electric Shock			
45	199174GS	DECAL, Hot Surface			
46	201732GS	DECAL, Important, Level Surface			
47	199172GS	DECAL, Warning			
48	199739GS	DECAL, Warning, Tank Drain			
49	201731GS	DECAL, Reset			
50	199961GS	HOSE, Rilsan			
	198815GS	MANUAL, Operator's		Not Illustrated	
	201765GS	OIL, Compressor		Not Illustrated	