

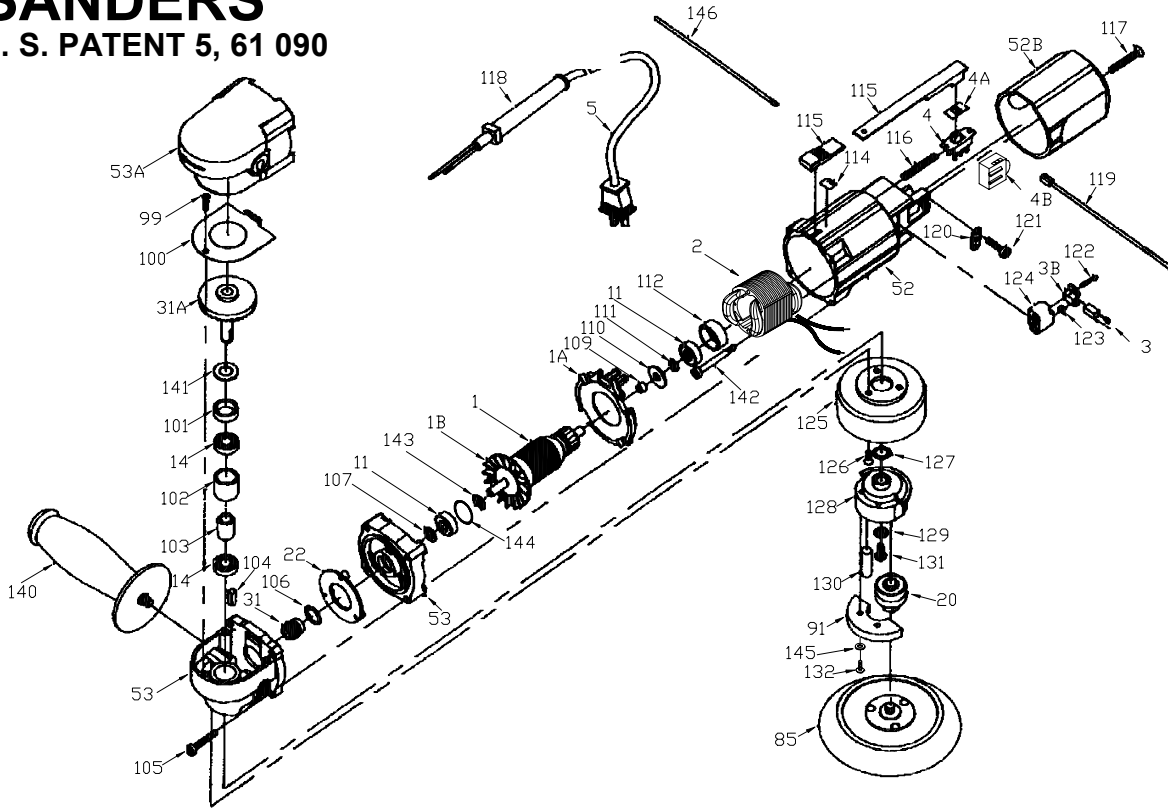
PORTER-CABLE

RANDOM ORBIT SANDERS

U. S. PATENT 5, 61 090

WARNING: Electrical repairs should only be attempted by trained repairmen. Contact the nearest Porter-Cable Service Center or other competent repair center.

7334
7335
7336
7336SP



Ref. No.	Part No.	Description	Ref. No.	Part No.	Description	Ref. No.	Part No.	Description
1	872987**	Armature, Incl: Ref. 1B	105	876651	Screw	143	847564**	Snap Ring
1A	698153	Baffle	106	699682**	Slinger (Early Models), CF	144	697029**	O-Ring
1B	811292**	Armature Fan, Current	107	872503	Spacer	145	859359**	Washer, (Balance)
	811246**	Armature Fan, Early	109	698394	Tube-Insulating	146	693969	Insulating Sleeve
2	872988	Field, 7335 & 7336T2, Incl: Ref 3	110	695893	Washer-Fiber	*	n 48222**	Lubricant, 5 1/2 oz.
3	888386	Brush/Holder Assy., 7335 & 7336T2	111	849328	Spacer	*	n 875667**	Lubricant, 4 lbs.
	690741	Brush, All T1, 7334 T2	112	694432	Bearing Mount	*	48779	Spindle Wrench
3B	690742	Brush Holder, All T1, 7334 T2	114	874502	Switch Decal, 7334 T2, 7335, 7336	*	16005	Conversion Kit - 5" to 6"
4	694006	Switch		873307	Switch Decal, 7334 T1	*	13705	Conversion Kit,- 6" to 5"
4A	694924	Dust Shield	115	874525	Switch Button and Slide Pkg., 7334 T2, 7335, 7336	*	73340	Dust Collector Hood
4B	693971	VS Switch, 7335, 7336		873697**	Switch Button and Slide Pkg., 7334 T1	*	73333	Dust Hood and Hose Kit
5	872258	Cord	116	698536	Spring, 7334 T1 Only	*	39335	1 1/2" to 2 1/2" Hose Adapter
11	855284**	Comm End Bearing	117	698536	Spring, 7334 T1 Only	*	892163	Carrying Case
14	855219	Bearing	118	810716	Strain Relief			Accessories (Optional)
20	872991	Spindle & Bearing Assy.	119	887666	Lead T2	*	13700	5" Pad, 7334, Standard 7335
22	698178	Grease Plug, All T1, 7334 T2		699998	Lead Assy. T1	*	16000	6" Pad, Standard 7336
31	872990**	Pinion	120	861434	Cord Clamp	*	13701	5" Contour Pad, 7334, 7335
31A	872989	Gear & Shaft Assy.	121	882185	Screw	*	16001	6" Contour Pad, 7336
52	888001	Motor Hsg., Incl.: Ref. 3, 119, 122	122	879298	Screw T2	*	14700**	5" Pad w/Holes, 7334, 7335
				854805	Screw T1	*	17000**	6" Pad w/Holes, 7336
52B	699688	Mtr. Hsg. Cap, 7334	123	868775	Spring	*	14701**	5" Contour Pad w/Holes, 7334
	698738	Mtr. Hsg. Cap, 7335, 7336	124	690740	Brush Holder Base	*	17001**	6" Contour Pad w/Holes, 7336
53	891106	Gear Hsg./Int. Plate, Incl.: Ref. 144	125	699942	Cover	*	n 54745	Polishing Pad, Standard 7336SP
53A	699946**	Gear Housing Cover	126	849819	Screw			Not Shown
85		See Accys.	127	851584	Washer Thrust			
91	874011	Counterweight, 7334, 7335	128	884277	Eccentric Hsg., Incl: Ref. 132			
	699933	Counterweight, 7336	129	874513**	Eccentric Washer			
99	n 882187	Screw	130	695936	Rubber Plug			
100	699938	Plate-Gear	131	874511**	Hex Screw			
101	872502	Spacer	132	877817	Screw			
102	699925	Spacer	140	699681	Aux. Handle			
103	699924	Spacer	141	873140	Shim (As Required)			
104	698202**	Key-Square, Before S/N 019181	142	695185	Screw			

7334, 7335 7336, 7336SP

SERVICE NOTES

SQUARE KEY/WASHER/SCREW (7334 TYPE 1 & EARLY 7335/7336)

Early units used a square key (Ref. 104) and an external tooth lock washer (Ref. 129) to retain the eccentric housing (Ref.128) to the gear/shaft assembly (ref. 31A).

The lock washer was changed to a flat washer (Ref. 129) at S/N 016674. The flat washer was changed to a special eccentric washer at serial number 066261.

The square key (Ref. 104) is not used after S/N 019181.

The retaining screw (Ref. 131) was changed from a Phillips head to a hex head at serial number 049598.

All tools being serviced should be reassembled without the square key (Ref. 104) and with the special eccentric washer (Ref. 129) and the hex head screw (Ref. 131).

DO NOT use any retaining compound (Loctite, etc.) on screw (Ref. 131). Tighten screw to 35/40 in lbs.

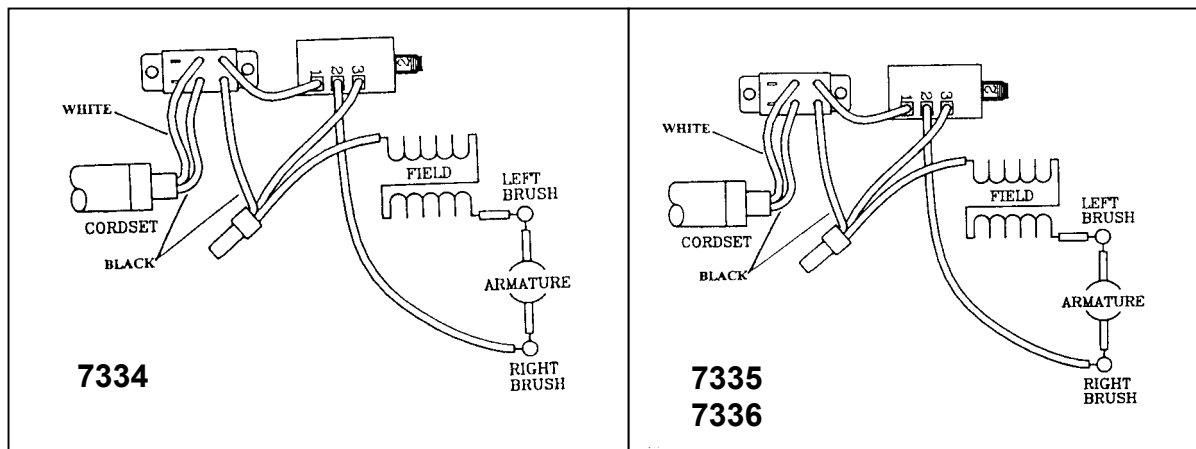
SWITCH BUTTON/SLIDE (7334 TYPE 1)

Early units had a black switch button. Later units have a red switch button. Only the red button is supplied for service. The switch button and slide should always be installed as a set.

SNAP-RING (7334 (TYPE 1))

The snap-ring (Ref. 143) was not used on early units. It is recommended the snap-ring be installed on those units during repairs.

WIRING DIAGRAMS



INTERMEDIATE PLATE, O-RING

Current models incorporate an O-ring in the bearing bore of the intermediate plate. Early models did not have this O-ring. The new intermediate plate kit (with O-ring) will be supplied for all service requirements.

When assembling the bearing to the new style intermediate plate, use a new O-ring and lightly coat the bearing bore with RTV silicone just prior to assembly.

LUBRICANT

Early units had a very light colored (almost clear) lubricant (801750, 801751). Current units have dark green lubricant. When servicing early units, we recommend change to the new lubricant.