



Operating Instructions and Parts Manual Bench-top Drum Sander

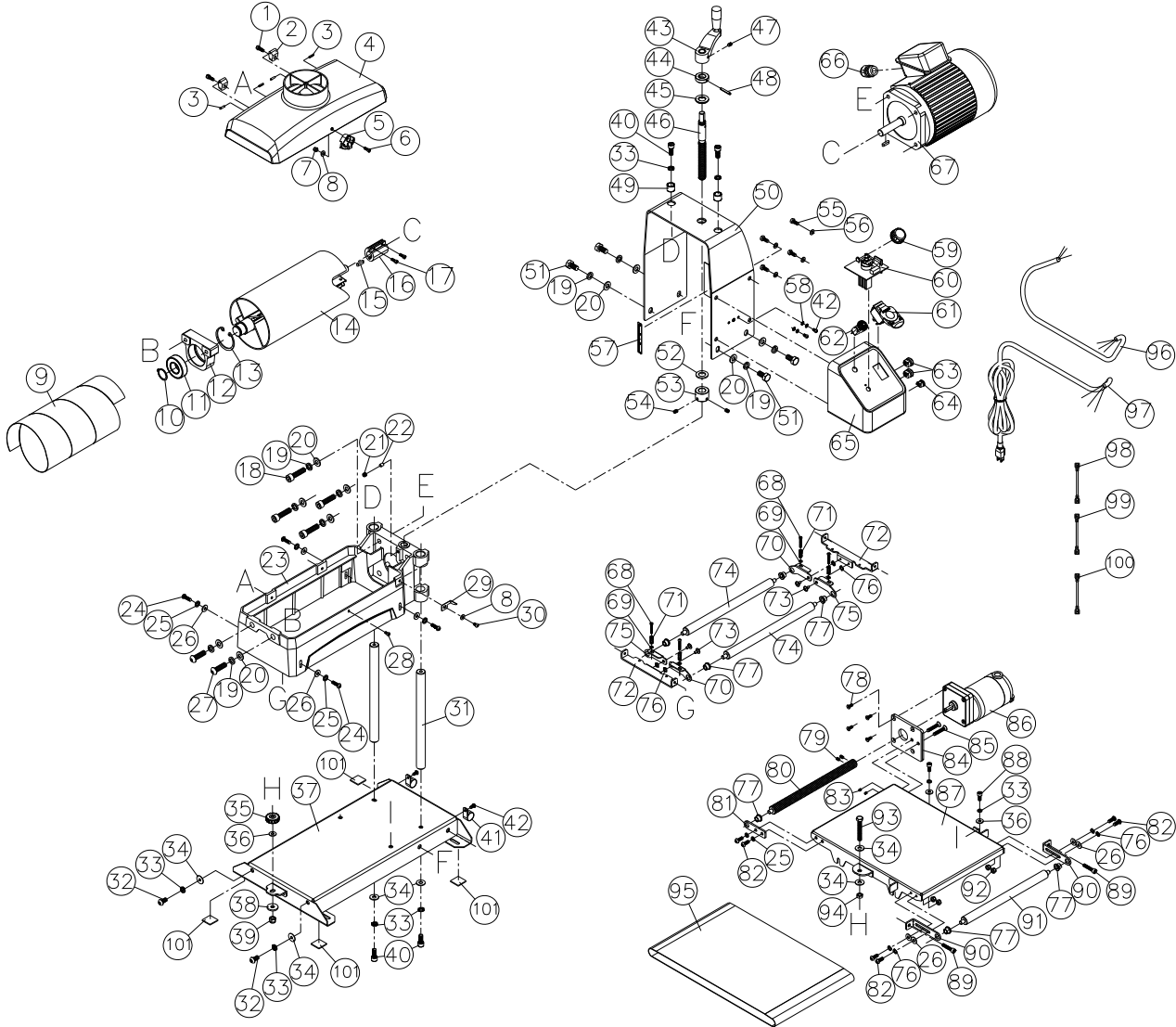
Model JWDS-1020



JET
427 New Sanford Road
LaVergne, Tennessee 37086
Ph.: 800-274-6848
www.jettools.com

Part No. M-723510
Edition 1 06/2019
Copyright © 2019 JET

13.1.1 JWDS-1020 Drum Sander – Exploded View



13.1.2 JWDS-1020 Drum Sander Parts List

Index No	Part No	Description	Size	Qty
1	TS-1503041	Socket Head Cap Screw	M6 x 1.0P x 16L	2
2	JWDS1632-103	Drum Carriage Hinge		2
3	JWDS1632-103	Spring Pin	3 x 14L	4
4	JWDS1020-104	Dust Hood		1
5	PM2244-109	Knob		1
6	TS-1502041	Socket Head Cap Screw	M5 x 0.8P x 16L	1
7	TS-1541011	Nylon Lock Hex Nut	M5 x 0.8P	1
8	TS-1550031	Flat Washer	5.1 x 12 x 1T	2
9		Abrasive (see sect. 12.0 for replacements)		1
10		C-Retainer Ring Ext. (Re:14A)	STW-25	1
11		Ball Bearing (Re:14A)	6205VV	1
12		Outboard Bearing Housing (Re:14A)		1
13		C-Retainer Ring Int. (Re:14A)	RTW-52	1
14		Drum (Re:14A)		1
14A	JWDS1020-114A	Drum Assembly (includes #10-17)		1
15	5519710	Key	5 x 5 x 20L	1
16	JWDS1020-116	Coupling		1
17	TS-1501041	Socket Head Cap Screw	M4 x 0.7P x 12L	2
18	TS-1505071	Socket Head Cap Screw	M10 x 1.5P x 45L	4
19	TS-2361101	Lock Washer	M10	10
20	TS-1550071	Flat Washer	10 x 20 x 2T	10
21	5302731	Socket Head Set Screw	M8 x 1.25P x 6L	1
22	PM2244-184	PU Block		1
23	JWDS1020-123	Drum Carriage		1
24	TS-2246202	Socket Head Button Screw	M6 x 1.0P x 20L	4
25	TS-2361061	Lock Washer	M6	6
26	TS-1550041	Flat Washer	6.4 x 16 x 1.6T	8
27	TS-2249352	Socket Head Button Screw	M10 x 1.5P x 35L	2
28	TS-1502011	Socket Head Cap Screw	M5 x 0.8P x 8L	1
29	JWDS1020-129	Pointer		1
30	6290832	Phillips Pan Hd Machine Screw	M5 x 0.8P x 8L	1
31	JWDS1020-131	Guide Bar		2
32	TS-2248162	Socket Head Button Screw	M8 x 1.25P x 16L	2
33	TS-2361081	Lock Washer	M8	8
34	TS-1550061	Flat Washer	8.5 x 20 x 1.5T	6
35	JWDS1020-135	Knob		1
36	TS-1550061	Flat Washer	8.5 x 16 x 1.5T	3
37	JWDS1020-137	Base		1
38	TS-1550061	Flat Washer	8 x 25 x 3T	1
39	TS-1541031	Nylon Lock Hex Nut	M8 x 1.25P	1
40	F005403L	Socket Head Cap Screw w/thrdlckr	M8 x 1.25P x 20L	4
41	JWDS1020-141	Cable Holder	ACC-6 (19mm)	2
42	TS-1533032	Phillips Pan Hd Machine Screw	M5 x 0.8P x 10L	4
43	JWDS1632-137	Crank Handle		1
44	JWDS1632-145	Collar		1
45	JWDS1632-140	Oilite Washer		1
46	JWDS1632-141	Height Adjusting Screw		1
47	TS-1523031	Socket Head Set Screw	M6 x 1.0P x 10L	1
48	JWDS1632-146	Spring Pin	4 x 30L	1
49	JWDS1020-149	Spacer		2
50	JWDS1020-150	Motor Shroud		1
51	TS-1491021	Hex Cap Screw	M10 x 1.5P x 20L	4
52	JWDS1632-148	Nylon Washer		1
53	JWDS1632-149	Collar		1
54	TS-2276081	Socket Head Set Screw	M6 x 1.0P x 8L	2
55	F011767	Pan Hd Phillips Tapping Screw	#14 x 3/4L	4
56	TS-1550041	Flat Washer	6 x 12 x 1T	4
57	JWDS1632-163	Depth Scale		1
58	F002097	Lock Washer, Ext. Tooth	M5	4
59	PM2244-196	Knob		1

Index No	Part No	Description	Size	Qty
60	JWDS1020-160	Circuit Board		1
61	JSG96-135	Switch		1
	JSG96-135A	Switch Key (not shown)		1
62	JWDS1020-162	Overload Relay		1
63	JPS10TS-351	Strain Relief	SR-6R3	2
64	JWDS1020-164	Strain Relief	SB5P-2	1
65	JWDS1020-165	Control Box (incl. LM000390 Label)		1
66	JWDS1632-153	Strain Relief	PG 11	1
67	JWDS1020-167	Motor	"1HP, 115V, 60Hz"	1
	JWDS1020-167RC	Running Capacitor (not shown)	30mF 250VAC	1
	JWDS1020-167FC	Fan Cover (not shown)		1
	JWDS1020-167CF	Cooling Fan (not shown)		1
	JWDS1020-167WB	Wiring Box		1
	JWDS1020-167WBC	Wiring Box Cover		1
68	JWDS1020-168	Phillips Round Head Machine Screw	M4 x 0.7P x 30L	4
69	TS-1550021	Flat Washer	4.2 x 8 x 0.8T	4
70	JWDS1020-170	Right Tension Roller Suspension Bracket		2
71	PM2244-125	Compression Spring		4
72	JWDS1020-172	Tension Roller Fixed Bracket		2
73	PM2244-132	Shoulder Screw		4
74	JWDS1020-174	Tension Roller		2
75	JWDS1020-175	Left Tension Roller Suspension Bracket		2
76	63049	Wave Washer	WW-6	8
77	PM2244-130	Oilite Bushing		7
78	F010678	Socket Head Flat Screw	#10-32UNC x 1/2in L	4
79	TS-1522011	Socket Head Set Screw	M5 x 0.8P x 5L	2
80	JWDS1020-180	Drive Roller		1
81	JWDS1632-208	Drive Roller Bracket		1
82	TS-2246162	Socket Head Button Screw	M6 x 1.0P x 16L	6
83	TS-1521021	Socket Head Set Screw	M4 x 0.7P x 5L	2
84	JWDS1632-204	Belt Motor Plate		1
85	F010985	Socket Head Flat Screw	M6 x 1.0P x 35L	2
86	JWDS1020-186	Belt Motor	1/30HP 115V	1
87	JWDS1020-187	Conveyor Table		1
88	TS-1504031	Socket Head Cap Screw	M8 x 1.25P x 16L	2
89	TS-1503071	Socket Head Cap Screw	M6 x 1.0P x 30L	2
90	JWDS1020-190	Take-up Slide Bracket		2
91	JWDS1020-191	Driven Roller		1
92	TS-1541021	Nylon Lock Hex Nut	M6 x 1.0P	4
93	TS-1490101	Hex Cap Screw	M8 x 1.25P x 55L	1
94	TS-2311081	Hex Nut	M8 x 1.25P	1
95	JWDS1020-195	Conveyor Belt		1
96	JWDS1020-196	Motor Cable	SJT 16AWG x 3C	1
97	JWDS1020-197	Power Cable	SJT 16AWG x 3C	1
98	JWDS1020-198	Internal Connection Cable (Black)	ST 16AWG x 1C x 10cm	1
99	JWDS1020-199	Internal Connection Cable (White)	ST 16AWG x 1C x 15cm	1
100	JWDS1020-200	Internal Connection Cable (Black)	ST 16AWG x 1C x 15cm	1
101	JWDS1020-1101	Foam Pad (set of 4)		4
	JET-92	JET Logo (not shown)	92x38mm	1
	LM000385	Warning Label, JWDS-1020 (not shown)		1
	LM000386	ID Label, JWDS-1020 (not shown)		1
	JWDS1632-142	Incremental Depth Scale (not shown)		1
	LM000236	Caution Label - Table Lock (not shown)		2
	JWDS1632-163	Depth Scale (not shown)		1
	LM000387	Parallel Adjust Label (not shown)		1
	LM000388	Motor Label, JWDS-1020 (not shown)		1
	LM000389	Belt Motor Label (not shown)		1
	LM000390	Control Panel Label (not shown)		1