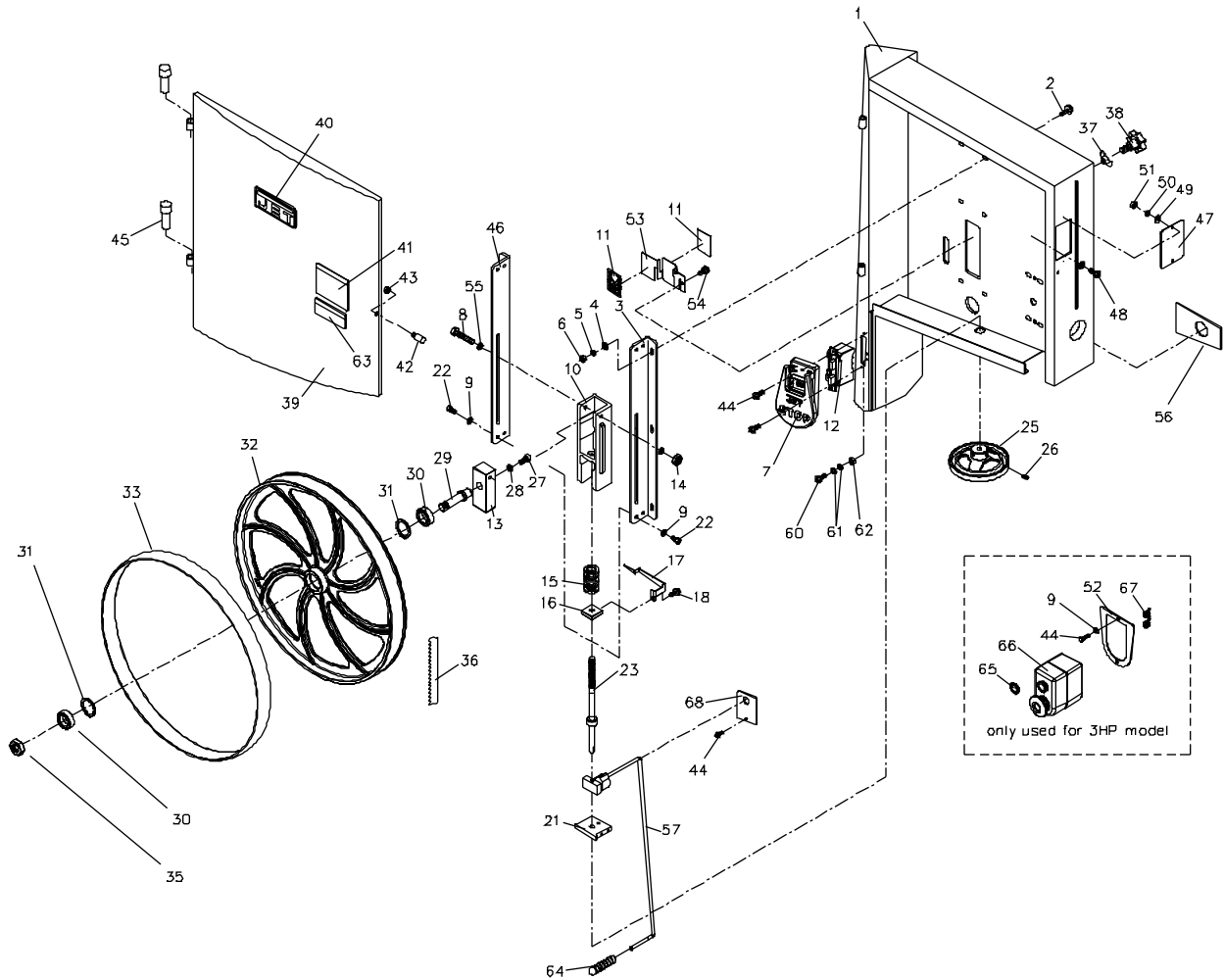


Upper Wheel Assembly (18QT)

Index No.	Part No.	Description	Size	Qty
1	JWBS18DXA-101A	Saw Body		1
2	TS-0152011	Carriage Bolt	5/16-18 x 1	6
3	JWBS18DXA-103	Upper Wheel Bracket, Right Side		1
4	TS-0680031	Flat Washer	5/16	6
5	TS-0720081	Lock Washer	5/16	6
6	TS-0561021	Hex Nut	5/16-18	6
7	JPS10TS-342	Stop Switch Face Plate	for 1.75 HP	1
8	TS-1490151	Hex Cap Screw	M8x80	1
9	TS-0680021	Flat Washer	1/4	6
10	JWBS18DX-110	Sliding Bracket		1
11	JWBS18DX-111	Blade Tension Indicator Label		2
12	JPS10TS-343	Main Switch	for 1.75HP	1
13	JWBS18DX-113	Shaft Bracket		1
14	TS-1541031	Nylon Insert Lock Nut	M8	1
15	JWBS18DXA-115	Spring		1
16	JWBS18-116	Square Nut		1
17	JWBS18DX-117	Pointer		1
18	JWBS18-118	Screw	M5x8	1
21	JWBS18DXA-121	Bracket		1
22	TS-0050021	Hex Cap Screw	1/4-20 x 5/8	4
23	JWBS18DX-123	Blade Adjusting Screw		1
25	JWBS18-125	Hand Wheel		1
26	TS-0267041	Set Screw	1/4-20 x 3/8	2
27	TS-0209021	Socket Head Cap Screw	3/8-16 x 5/8	1
28	TS-0720091	Lock Washer	3/8	1
29	JWBS18-129	Upper Wheel Shaft		1
30	BB-6203ZZ	Ball Bearing	6203ZZ	2
31	JWBS18-131	Retaining Ring	R40	2
32	JWBS18-132	Upper Wheel		1
33	JWBS18DX-133	Tire		1
35	JWBS18-135	Hex Nut	5/8-18UNF L.H.	1
36	JWBS18DX-136	Blade	3/4"W x 137"L x .026T x 4TPI	1
37	TS-0590061	Wing Nut	5/16-18	1
38	JWBS18-138	Lock Knob	5/16	1
39	JWBS18DXA-139	Upper Front Door		1
40	JWBS18-140	JET Nameplate		1
41	JWBS18-141	Warning Label		1
42	JWBS18-142	Bolt		1
43	TS-0561011	Hex Nut	1/4-20	1
44	TS-081C052	Screw	#10-24 x 3/4	3
44A	TS-0050011	Hex Cap Screw	1/4-20 x 1/2	2
45	JWBS18-39A	Door Hinge Pin		2
46	JWBS18DXA-146	Upper Wheel Bracket, Left Side		1
47	JWBS18DX-147	Tracking Window		1
48	TS-081C032	Screw	#10-24 x 1/2	2
49	TS-1550031	Flat Washer	M5	4
50	TS-2361051	Lock Washer	M5	2
51	TS-0560071	Hex Nut	#10-24	2
52	JWBS18DXA-152A	Switch Plate	for 1.75HP	1
	JWBS18DXA-152	Switch Plate	for 3HP	1
53	JWBS18DX-153	Scale Bracket		1
54	TS-081C022	Screw	#10-24 x 3/8	2
55	TS-1550061	Flat Washer	M8	2
56	JWBS18DXA-156	Tension Status Label		1
57	JWBS18DXA-157	Blade Tension Arm Assembly		1
60	TS-1533052	Screw	M5 x 16	1
61	JWL1220VS-146	Star Washer	M5	1

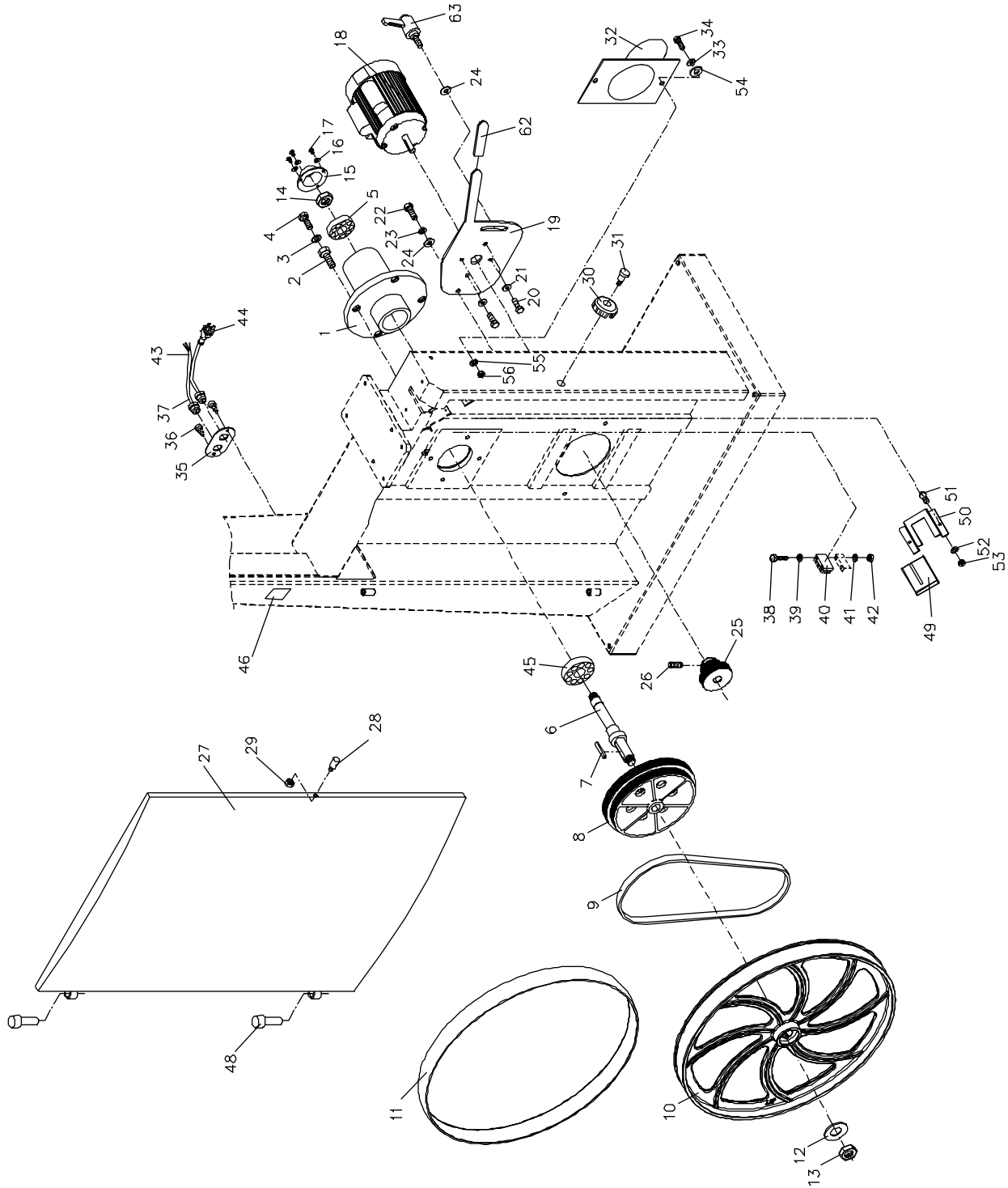
Index No.	Part No.	Description	Size	Qty
62	TS-1540031	Hex Nut	M5	1
63	JWBS18DXA-163	Blade Warning Label		1
64	JWBS18DXA-164	Grip		1
65	PM2000-298	Safety Key for Magnetic Switch	for 3HP	1
66	PM2000-293	Magnetic Switch	for 3HP	1
67	PM2000-294	Strain Relief	for 3HP	2
68	JWBS18DXA-168	Spring Plate		1



Lower Wheel and Motor Assembly (18QT)

Index No.	Part No.	Description	Size	Qty
1	JWBS18-201N	Bearing Base		1
2	JWBS20-62	Adjusting Bolt		4
3	TS-0720091	Lock Washer	3/8	4
4	TS-0060081	Hex Cap Screw	3/8-16 x 1-3/4	4
5	BB-6204ZZ	Ball Bearing	6204ZZ	2
6	JWBS18DXA-206	Spindle		1
7	JWBS18-207	Key	7 x 7 x 40	1
8	JWBS18DXA-208	Spindle Pulley		1
9	JWBS18DXA-209	Poly V-Belt	440J	1
10	JWBS18-210	Lower Wheel		1
11	JWBS18DX-133	Tire		1
12	TS-0680081	Flat Washer	5/8	1
13	JWBS18-135	Hex Nut	5/8-18UNF L.H.	1
14	JWBS18-214	Hex Nut	5/8-18UNF R.H.	1
15	JWBS18-215	Bearing Cover		1
16	TS-0720051	Lock Washer	#10	3
17	TS-081C022	Screw	#10-24 x 3/8	3
18	JWBS18DX-218	Motor	1.75HP, 1Ph, 115/230V (prewired 115V)	1
	JWBS18DX-218A	Motor	3HP, 1Ph, 230V	1
	JWBS18X-MFC	Motor Fan Cover (not shown)		1
19	JWBS18DXA-219	Motor Bracket		1
20	TS-0081031	Hex Cap Screw	5/16-18 x 3/4	4
21	TS-0680031	Flat Washer	5/16	4
22	TS-0060051	Hex Cap Screw	3/8-16 x 1	1
23	TS-0720091	Lock Washer	3/8	1
24	TS-0680041	Flat Washer	3/8	2
25	JWBS18DXA-225	Motor Pulley	for 1.75HP	1
	JWBS18DXA-225A	Motor Pulley	for 3HP	1
26	TS-0270031	Set Screw	5/16-18 x 3/8	2
27	JWBS18DXA-227	Lower Front Door		1
28	JWBS18-142	Bolt		1
29	TS-0561011	Hex Nut	1/4-20	1
30	JWBS20-2	Lock Knob		1
31	TS-081F052	Screw	1/4-20 x 3/4	1
32	JWBS20-8W	Dust Chute		1
33	TS-0680031	Flat Washer	5/16	2
34	TS-0051051	Hex Cap Screw	5/16-18 x 1	2
35	JWBS18-235	Plate		1
36	TS-081C032	Screw	#10-24 x 1/2	2
37	JWBS18-237	Strain Relief Bushing		2
38	TS-081C082	Screw	#10-24 x 1-1/2	2
39	TS-1550031	Flat Washer	M5	2
40	JWBS18-240	Brush		1
41	TS-2361051	Lock Washer	M5	2
42	TS-0560071	Hex Nut	#10-24	2
43	JWBS18-243	Motor Cord	for 1.75HP	1
	JWBS18DXA-243A	Motor Cord	for 3HP	1
44	JWBS18-244	Power Cord	for 1.75HP	1
	JWBS18DXA-244A	Power Cord	for 3HP	1
45	BB-6205ZZ	Ball Bearing	6205ZZ	1
46	JWBS18DXA-246	I.D. Label	1.75HP	1
	JWBS18DXA-246A	I.D. Label	3HP	1
48	JWBS18-39A	Door Hinge Pin		2
49	JWBS18DX-249	Bracket		1
50	JWBS18DX-250	Shelf		1
51	TS-081C032	Screw	#10-24 x 1/2	2
52	TS-1550031	Flat Washer	M5	2

Index No.	Part No.	Description	Size	Qty
53	TS-0560071	Hex Nut	#10-24	2
54	JWBS18DX-254	Plastic Washer	5/16	1
55	TS-0720081	Lock Washer	5/16	2
56	TS-0561021	Hex Nut	5/16-18	2
62	JWBS18DXA-262	Grip		1
63	JWBS18DXA-263	Lock Handle		1



Blade Guide Assembly (18QT)

Index No.	Part No.	Description	Size	Qty
1	TS-0051051	Hex Cap Screw	5/16-18 x 1	4
2	TS-0720081	Lock Washer	5/16	4
3	TS-0680031	Flat Washer	5/16	8
4	JWBS18DX-304	Guide Bar Bracket		1
5	JWBS18-305	Worm		1
6	JWBS18-306	E-Ring	E-8	2
7	JWBS18-307	Gear Base		1
8	JWBS18-308	Bushing		1
9	JWBS18-309	C-Ring	S-12	2
10	JWBS18-310	Shaft		1
11	JWBS18-311	Gear		1
12	TS-0208071	Socket Head Cap Screw	5/16-18 x 1-1/4	2
13	JWBS18-313	Lock Knob	5/16	1
14	JWBS18DX-314	Plate		1
15	TS-0255021	Button Head Socket Screw	5/16-18 x 1/2	4
16	JWBS18DX-316	Guide Bar		1
17	JWBS18DX-317	Pointer		1
18	TS-0720071	Lock Washer	1/4	3
19	TS-0050011	Hex Cap Screw	1/4-20 x 1/2	1
20	JWBS18-320N	Guide Bracket		1
21	TS-0207021	Socket Head Cap Screw	1/4-20 x 1/2	2
22	JWBS18X-322	Blade Guard		2
23	TS-0720111	Lock Washer	1/2	1
24	TS-0561051	Hex Nut	1/2-13	1
25	JWBS18DX-325	Locking Shaft		1
26	JWBS20-326	C-Ring		10
27	BB-6202ZZ	Ball Bearing	6202ZZ	10
28	JWBS20-328	Spacer		4
29	JWBS20-329	Shaft		2
30	TS-0270031	Set Screw	5/16-18 x 3/8	2
31	JWBS20-2	Lock Knob		1
32	TS-081F052	Screw	1/4-20 x 3/4	1
33	JWBS18-333	Hand Wheel		1
34	TS-0267041	Set Screw	1/4-20 x 3/8	1
35	JWBS20-103A	Handle		1
36	JWBS18DX-336	Cutting Height Scale		1
37	JWBS18DX-337	Bracket		1
38	JWBS18DX-338	Base		1
39	JWBS20-339	Threaded Lock Bushing		1
40	JWBS20-340	Bolt		1
41	JWBS18DX-341	Lock Knob		1
42	JWBS20-342	Screw		2
44	TS-0207041	Socket Head Cap Screw	1/4-20 x 3/4	2
45	TS-0680021	Flat Washer	1/4	2
46	JWBS20-360	Bracket		1
47	JWBS20-324	Wing Screw		2
48	TS-1521011	Set Screw	M4 x 4	8
49	JWBS20-349	Knob		2
50	TS-0207031	Socket Head Cap Screw	1/4-20 x 5/8	2
51	TS-0207021	Socket Head Cap Screw	1/4-20 x 1/2	2
52	JWBS20-352	Bracket		1
53	JWBS18DXA-353	Wing Screw	1/4-20 x 1/2	2
54	JWBS20-354	Bearing Support		2
55	JWBS20-355	Lock Bushing		1
56	TS-0206021	Socket Head Cap Screw	#10-24 x 1/2	2
57	JWBS18DX-357	Bearing Bracket		1
58	6295293	Locking Handle		1

Index No.	Part No.	Description	Size	Qty
59	JWBS18DX-359	Locking Handle		1
60	JWBS18DX-360	Shaft		1
61	JWBS18DX-361	Adjusting Screw		1
62	JWBS18DX-362	Adjusting Bracket		1
63	JWBS18DX-363	Nut		1
64	TS-0267021	Set Screw	1/4-20 x 1/4	1
65	JWBS18DX-365	Set Screw, Special		1
66	JWBS18DX-366	Adjustment Handle		2
67	TS-0680031	Flat Washer	5/16	1
68	JWBS20-329A	Lower Shaft		2
69	TS-0561011	Hex Nut	1/4-20	1
70	TS-081F032	Pan Head Screw	1/4-20 x 1/2	2

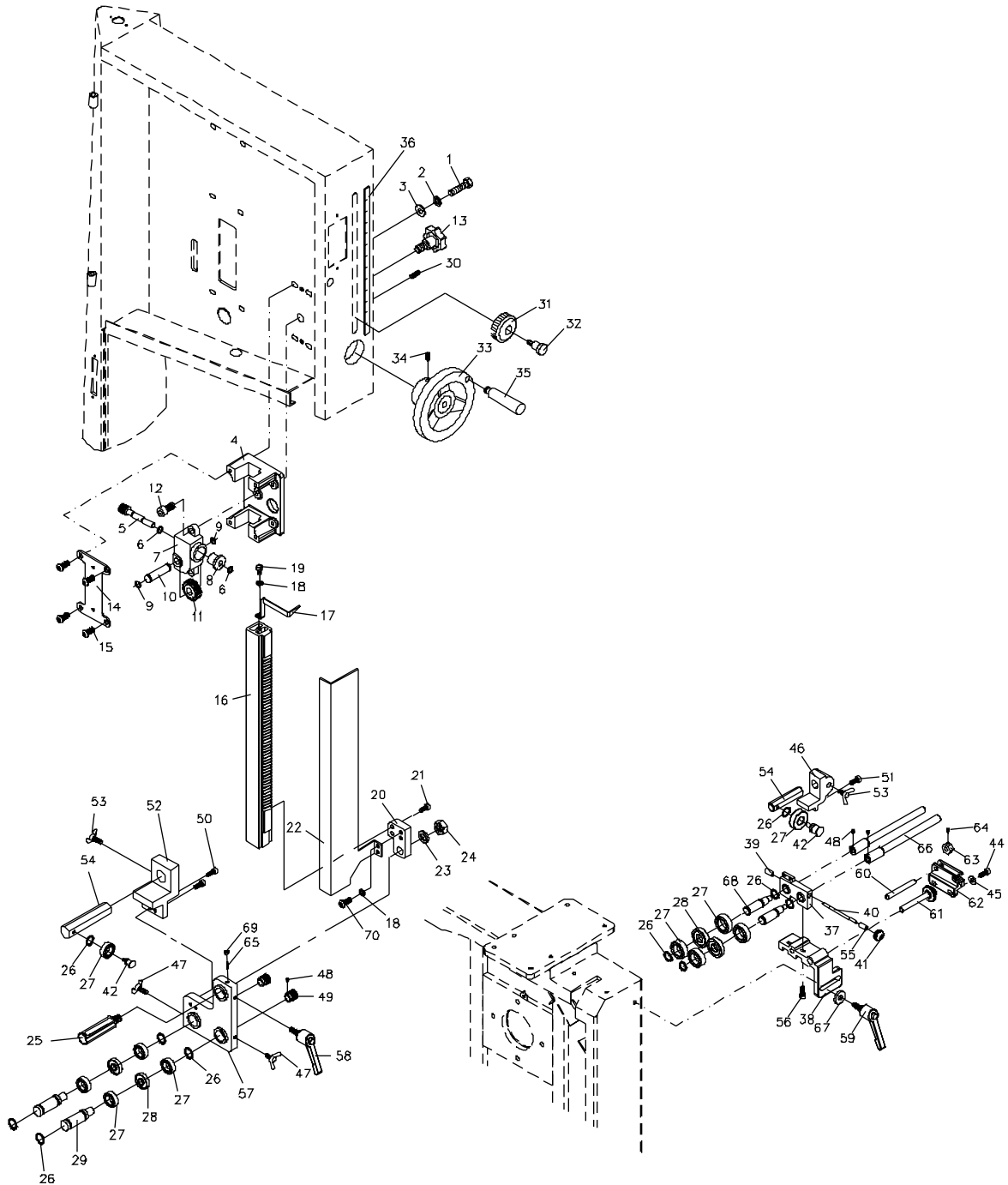
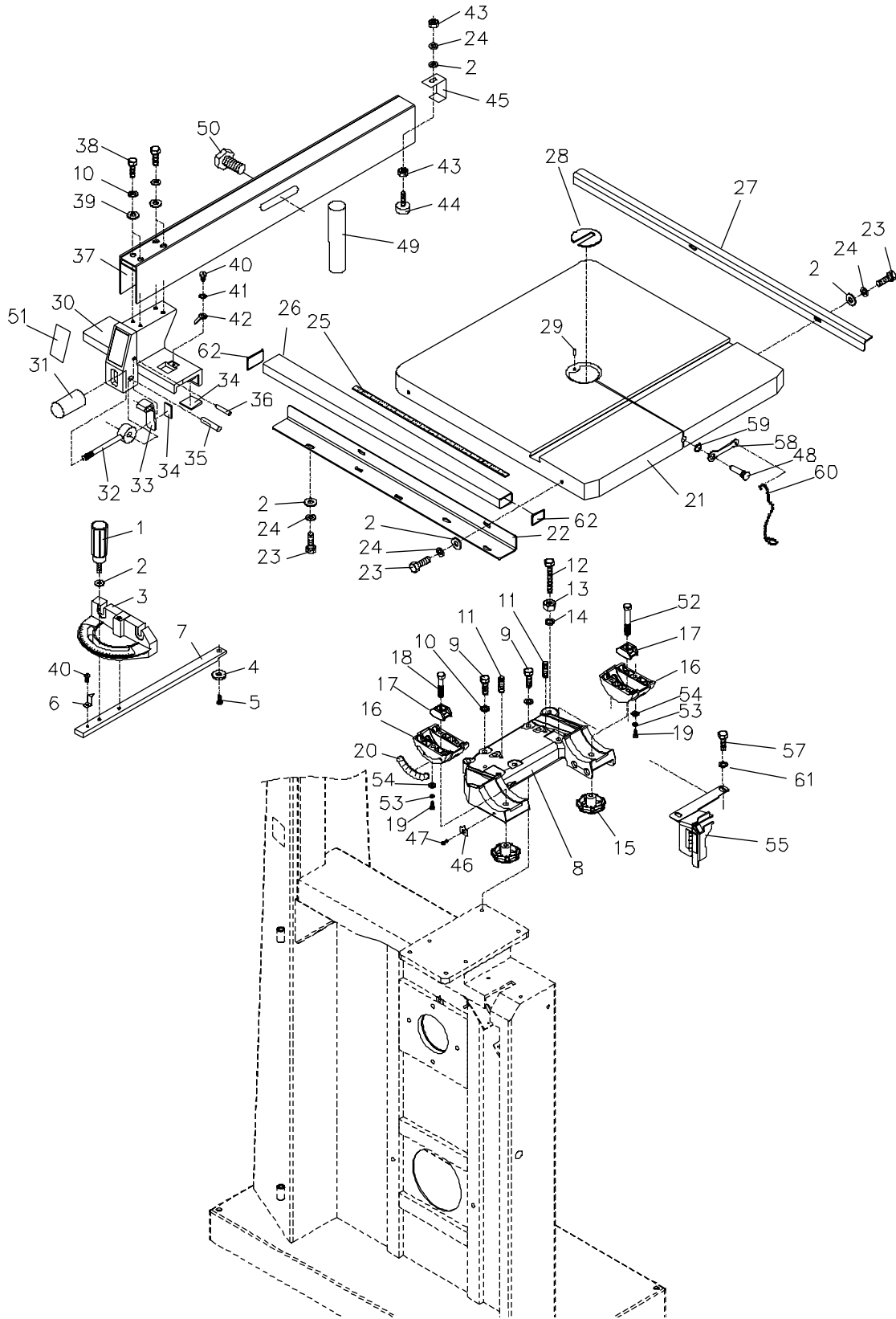


Table and Fence Assembly (18QT)

Index No.	Part No.	Description	Size	Qty
1	JWBS18-401	Lock Handle		1
2	TS-0680021	Flat Washer	1/4	11
3	JWBS18-403	Miter Gauge Body		1
4	JWBS20-156	Guide Disc		1
5	JWBS18-405	Screw	M6 x 8	1
6	JWBS18-406	Pointer		1
7	JWBS18-407	Guide Bar		1
8	JWBS18DX-408	Trunnion Support Bracket		1
9	TS-0051071	Hex Cap Screw	5/16-18 x 1-1/2	4
10	TS-0720081	Lock Washer	5/16	8
11	TS-0270061	Set Screw	5/16-18 x 5/8	2
12	TS-0060111	Hex Cap Screw	3/8-16 x 2-1/2	1
13	TS-0561031	Hex Nut	3/8-16	1
14	TS-0720091	Lock Washer	3/8	1
15	JWBS18-415	Lock Knob		2
16	JWBS18X-416	Trunnion		2
17	JWBS18-417	Trunnion Clamp Shoe		2
18	TS-1491081	Hex Cap Screw	M10 x 50	1
19	TS-1503041	Socket Head Cap Screw	M6 x 16	6
20	JWBS18-420	Scale		1
21	JWBS18-421	Table		1
22	JWBS18-422W	Front Rail		1
23	TS-0050021	Hex Cap Screw	1/4-20 x 5/8	9
24	TS-0720071	Lock Washer	1/4	10
25	JWBS18-425	Scale		1
26	JWBS18-426W	Guide Rail		1
27	JWBS18-427W	Rear Rail		1
28	JWBS20-144	Table Insert		1
29	JWBS20-145	Roll Pin	3 x 10	1
30	JWBS18-430	Fence Body		1
31	JWBS18-431	Knob		1
32	JWBS18-432	Lock Handle		1
33	JWBS18-433W	Lock Plate		1
34	JWBS18-434	Pad		5
35	JWBS18-435	Pin		1
36	JWBS18-436	Pin		1
37	JWBS18-437EA	Fence		1
38	TS-0208041	Socket Head Cap Screw	5/16-18 x 3/4	4
39	TS-0680031	Flat Washer	5/16	4
40	TS-0810012	Screw	#10-24 x 1/4	2
41	TS-0733031	External Tooth Lock Washer	#10	1
42	JWBS18-442	Pointer		1
43	TS-0561011	Hex Nut	1/4-20	2
44	JWBS18-444	Sliding Pad		1
45	JWBS18-445	Rear Hook		1
46	JWBS18-446	Pointer		1
47	JWBS18-447	Screw	M5 x 8	1
48	JWBS18DX-448	Table Pin		1
49	JWBS18-449E	Resaw Post		1
50	JWBS18-450	Lock Knob		1
51	JWBS18-451	JET Fence Label		1
52	TS-2210651	Hex Cap Screw	M10 x 65	1
53	TS-1551041	Lock Washer	M6	6
54	TS-1550041	Flat Washer	M6	6
55	JWBS18DX-455	Lower Blade Guard		1
57	TS-0051091	Hex Cap Screw	5/16-18 x 2	2
58	40-0260	Wrench		1

Index No.	Part No.	Description	Size	Qty
59	JWBS18DX-459	C-Ring	S-10	1
60	JWBS18DX-460	Link Chain		1
61	TS-0680031	Flat Washer	5/16	2
62	2013-285	End Cover		2
	JWBS18-MGCP	Miter Gauge Assembly		1
	JWBS18QT-FCP	Fence Assembly		1



Blade Guide Assembly

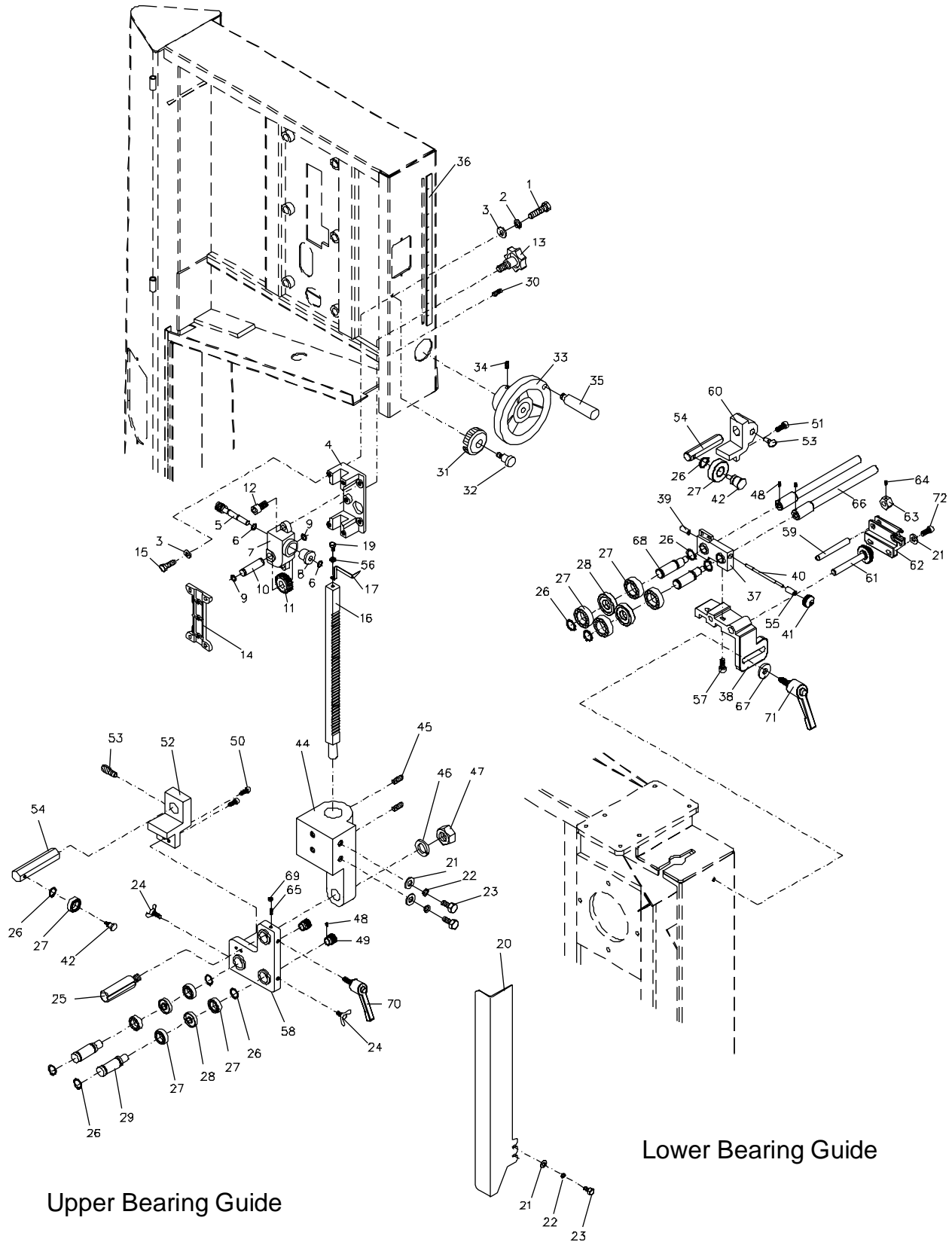
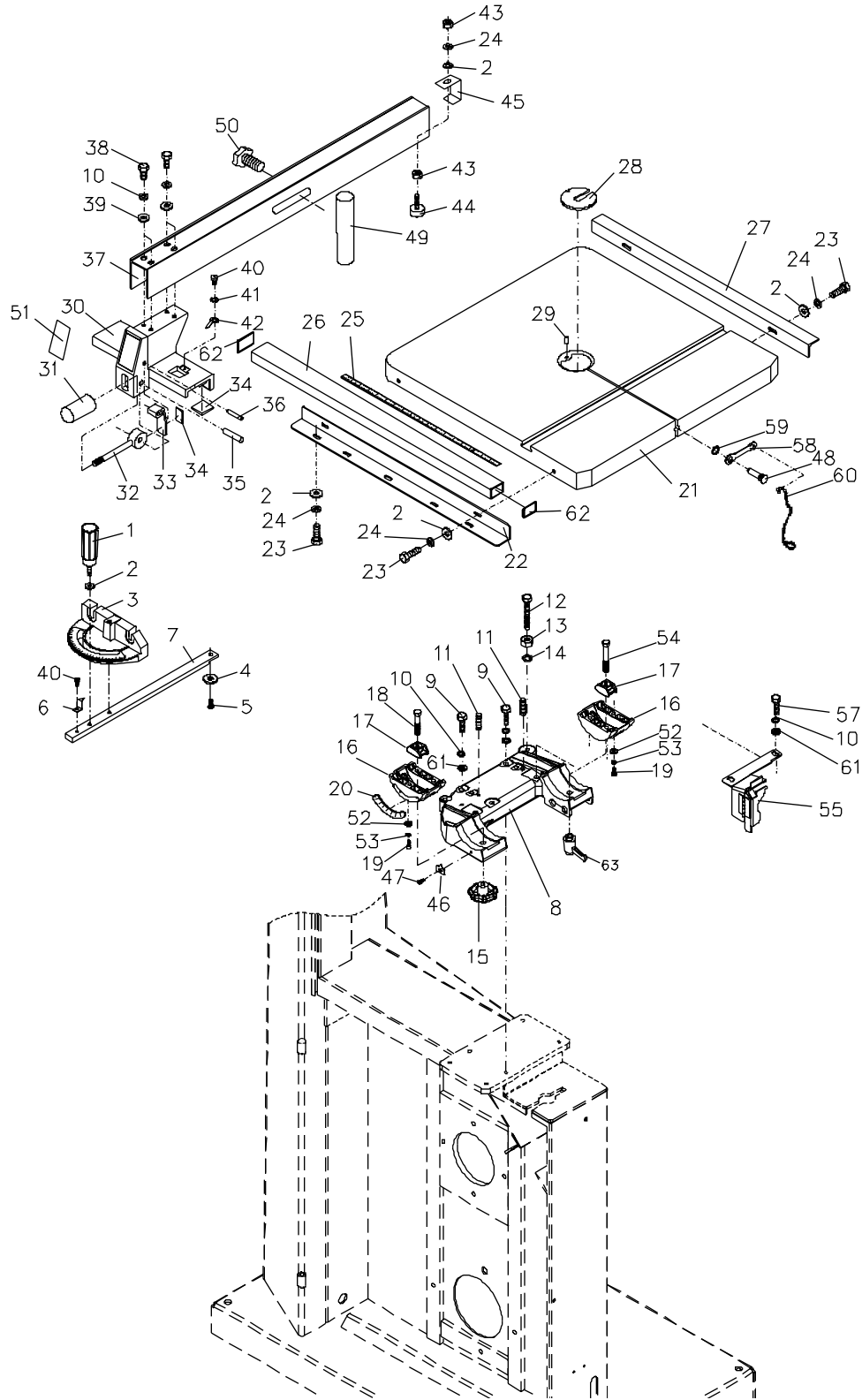


Table and Fence Assembly (20QT)

Index No.	Part No.	Description	Size	Qty
1	JWBS18-401	Locking Handle		1
2	TS-0680021	Flat Washer	1/4	11
3	JWBS18-403	Miter Gauge Body		1
4	JWBS20-156	Guide Disc		1
5	JWBS18-405	Screw	M6x8	1
6	JWBS18-406	Pointer		1
7	JWBS18-407	Guide Bar		1
8	JWBS18DX-408	Trunnion Support Bracket		1
9	TS-0051071	Hex Cap Screw	5/16-18x1-1/2	4
10	TS-0720081	Lock Washer	5/16	8
11	TS-0270061	Set Screw	5/16-18x5/8	2
12	TS-0060111	Hex Cap Screw	3/8-16x2-1/2	1
13	TS-0561031	Hex Nut	3/8-16	1
14	TS-0720091	Lock Washer	3/8	1
15	JWBS18-415	Lock Knob		2
16	JWBS18X-416	Trunnion		2
17	JWBS18-417	Trunnion Clamp Shoe		2
18	TS-1491081	Hex Cap Screw	M10x50	1
19	TS-1503041	Socket Head Cap Screw	M6x16	6
20	JWBS18-420	Scale		1
21	JWBS20-421	Table		1
22	JWBS18-422W	Front Rail		1
23	TS-0050021	Hex Cap Screw	1/4-20x5/8	9
24	TS-0720071	Lock Washer	1/4	10
25	JWBS18-425	Scale		1
26	JWBS20-426	Guide Rail		1
27	JWBS18-427W	Rear Rail		1
28	JWBS20-144	Table Insert		1
29	JWBS20-145	Roll Pin	3x10	1
30	JWBS18-430	Fence Body		1
31	JWBS18-431	Handle		1
32	JWBS18-432	Cam		1
33	JWBS18-433W	Lock Plate		1
34	JWBS18-434	Pad		5
35	JWBS18-435	Pin		1
36	JWBS18-436	Pin		1
37	JWBS20-437EA	Fence		1
38	TS-0208041	Socket Head Cap Screw	5/16-18x3/4	4
39	TS-0680031	Flat Washer	5/16	4
40	TS-0810012	Screw	#10-24x1/4	2
41	TS-0733031	External Tooth Lock Washer	#10	1
42	JWBS18-442	Pointer		1
43	TS-0561011	Hex Nut	1/4-20	2
44	JWBS18-444	Sliding Pad		1
45	JWBS18-445	Rear Hook		1
46	JWBS18-446	Pointer		1
47	JWBS18-447	Screw	M5x8	1
48	JWBS18DX-448	Table Pin		1
49	JWBS18-449E	Resaw Guide		1
50	JWBS20-450	Lock Knob		1
	JWBS18-MGCP	Miter Gauge Assembly		1
	JWBS20QT-FCP	Fence Assembly		1
51	JWBS18-451	JET Fence Label		1
52	TS-1550041	Flat Washer	M6	6
53	TS-1551041	Lock Washer	M6	6
54	TS-2210651	Hex Cap Screw	M10x65	1
55	JWBS18DX-455	Lower Blade Guard		1

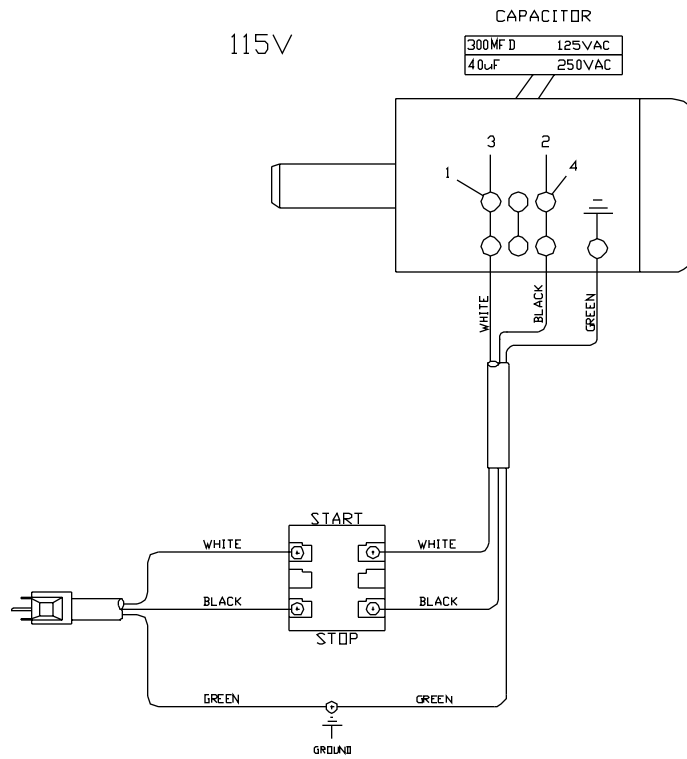
Index No.	Part No.	Description	Size	Qty
57	TS-0051091	Hex Cap Screw	5/16-18x2	2
58	40-0260	Wrench		1
59	JWBS18DX-459	C-Ring	S-10	1
60	JWBS18DX-460	Link Chain		1
61	TS-0680031	Flat Washer	5/16	6
62	2013-285	End Cover		2
63	JWBS20QT-463	Lock Handle		1



Electrical Connections

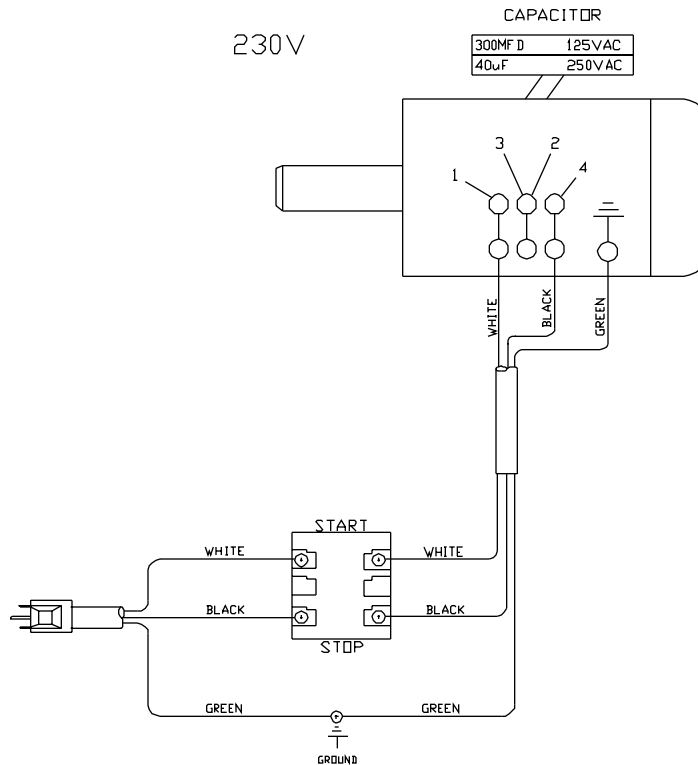
1 3/4 HP, 1Ph, 115V

Band Saw Model No.: JWBS-18QT-1 (SN 710750B)



1-3/4 HP, 1Ph, 230V

Band Saw Model No.: JWBS-18QT-1 (SN 710750B)

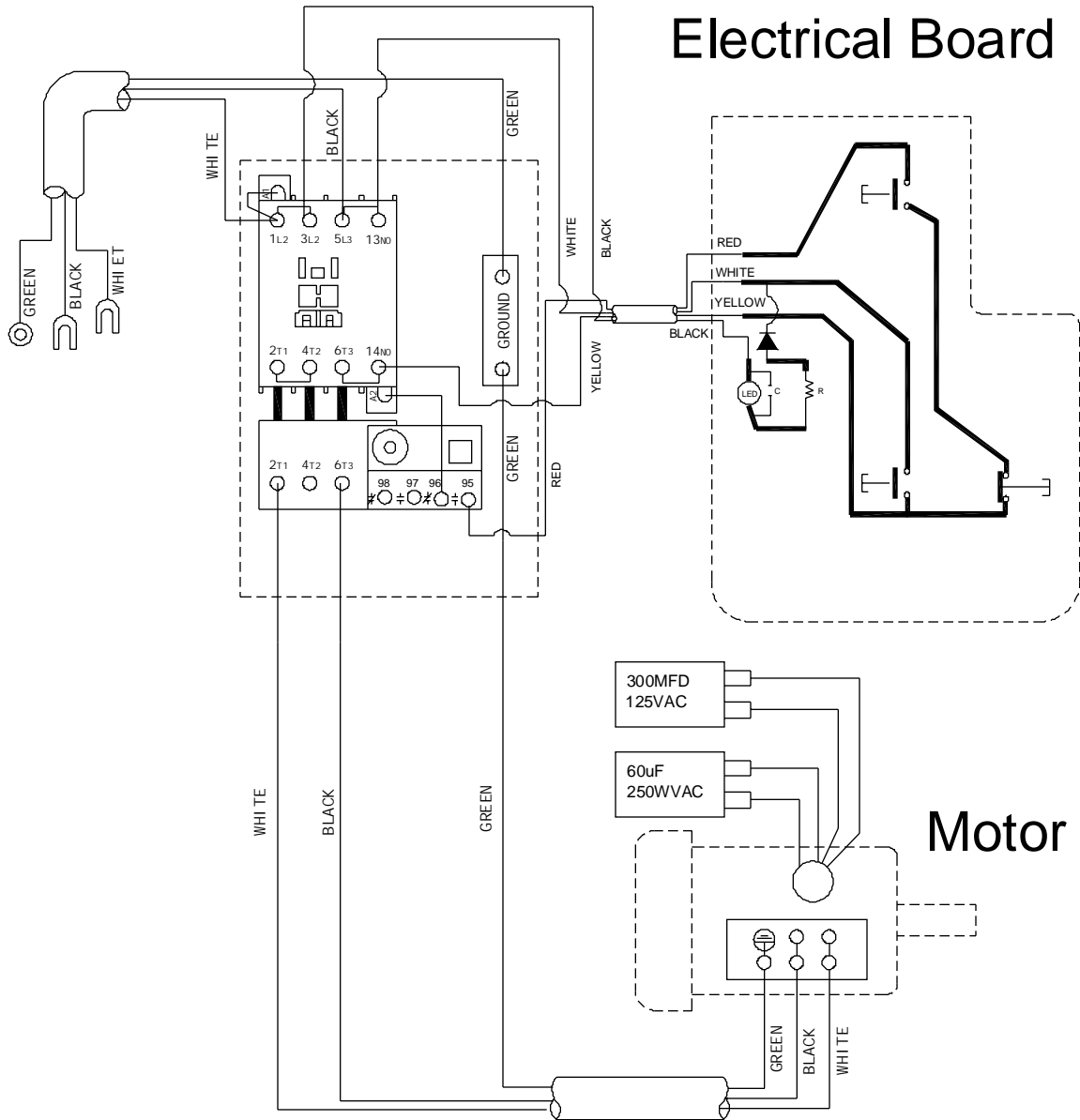


3 HP, 1Ph, 230V

Band Saw Model No.: JWBS-18QT-3 (SN 710751B)

Magnetic Switch

Electrical Board

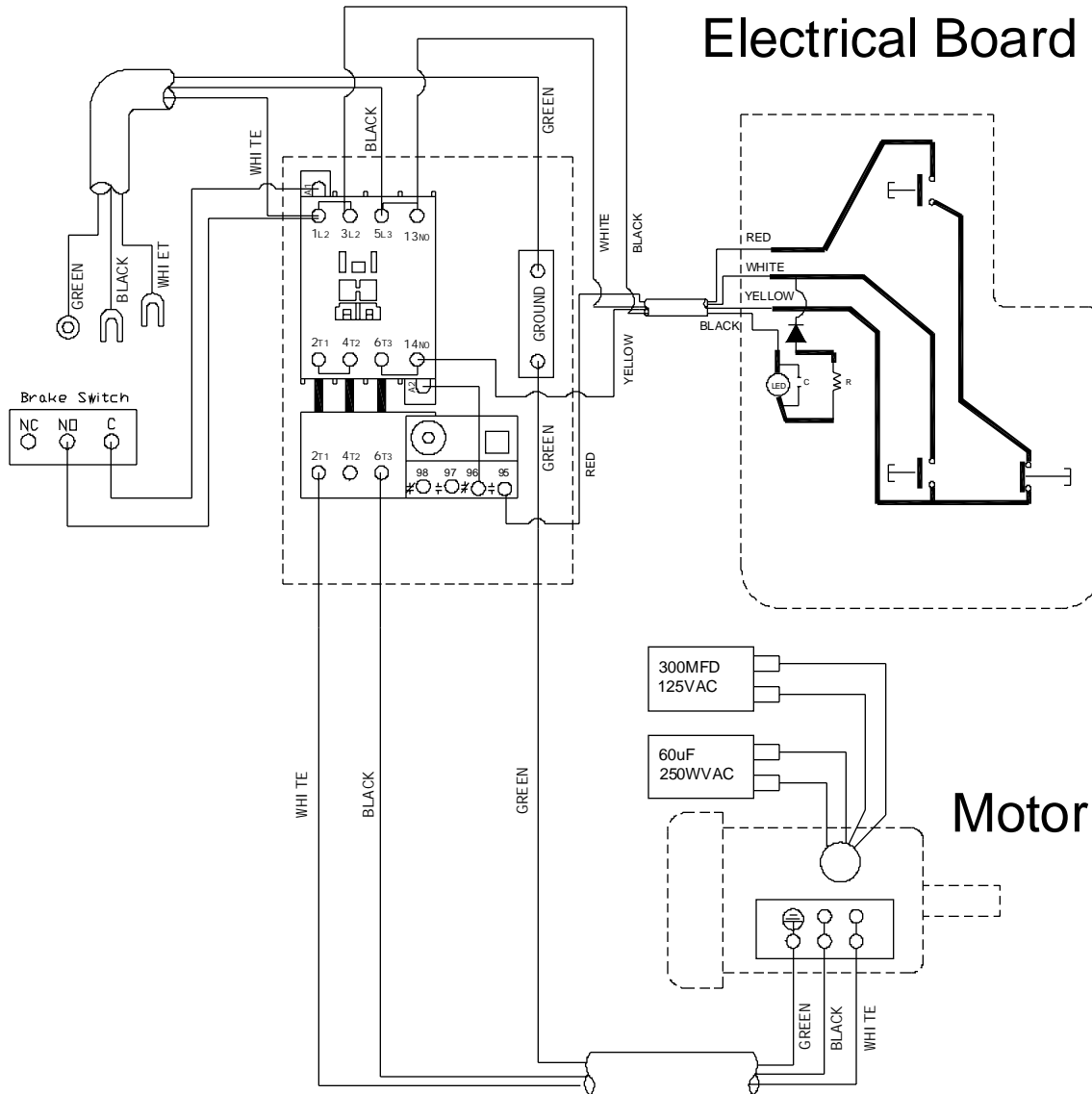


3 HP, 1Ph, 230V

Band Saw Model No.: JWBS-20QT-3 (SN708754B)

Magnetic Switch

Electrical Board



5 HP, 1Ph, 230V

(Band Saw Model No.: JWBS-20QT-5, SN 708755B)

Magnetic Switch

Electrical Board

