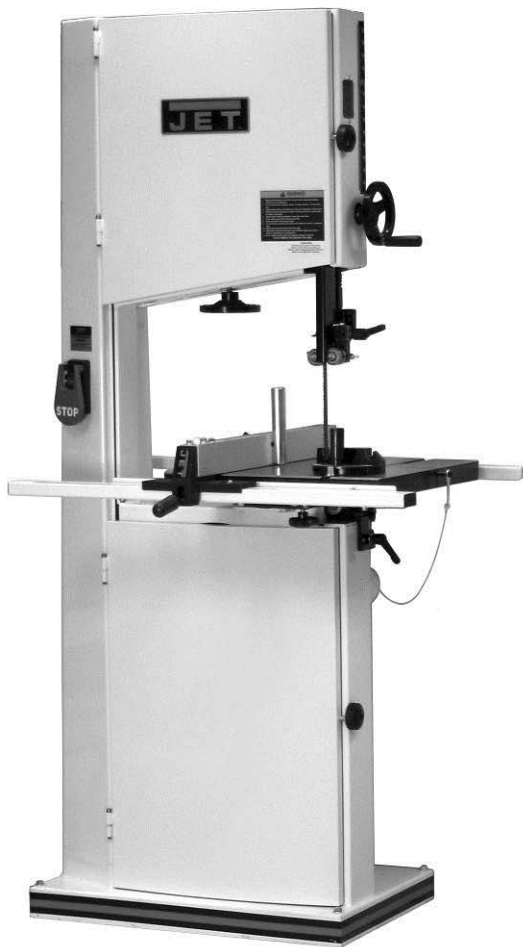


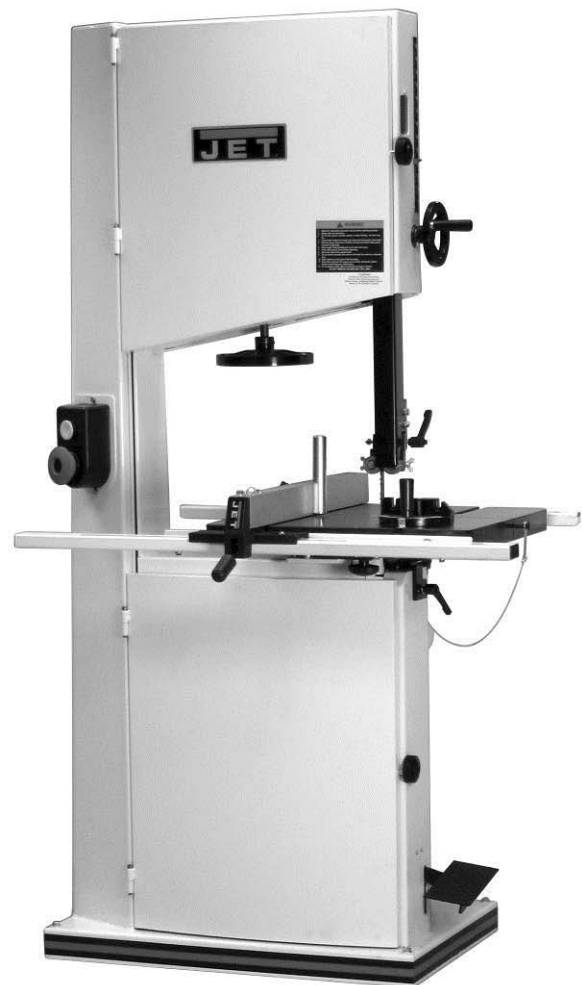


Operating Instructions and Parts Manual 18-Inch, 20-Inch Band Saw

Models: JWBS-18QT, -18QT-3, -20QT-3, -20QT-5



JWBS-18QT



JWBS-20QT

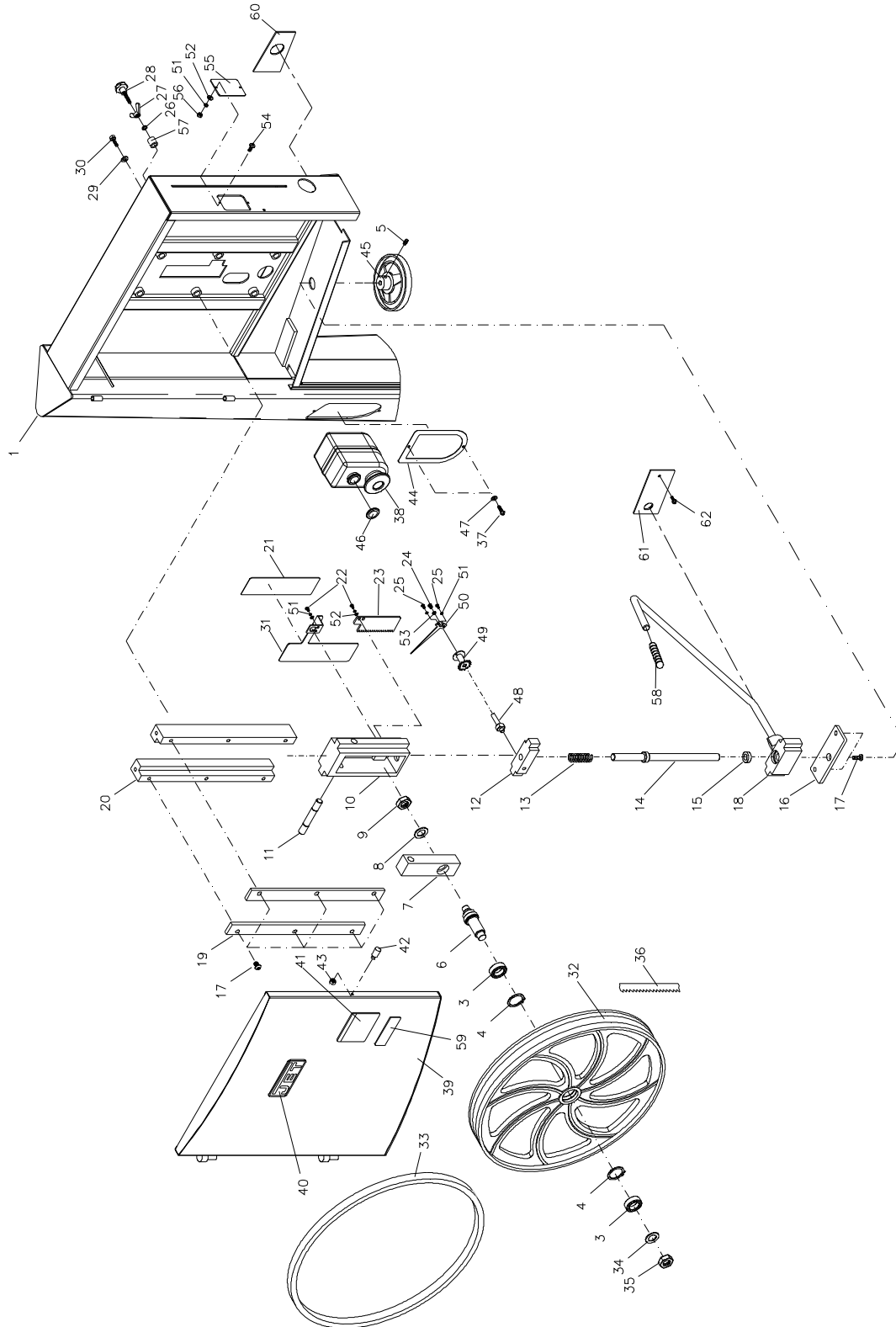
JET
427 New Sanford Road
LaVergne, TN 37086-4184, USA
Ph.: 800-274-6848
www.jettools.com

Part No. M-710750B
Revision C2 04/2014
Copyright © 2014 JET

Upper Wheel Assembly (20QT)

Index No.	Part No.	Description	Size	Qty
1	JWBS20QT-501	Saw Body	for 3HP	1
	JWBS20QT-501A	Saw Body	for 5HP	1
3	BB-6205ZZ	Ball Bearing	6205	2
4	JWBS20QT-504	Retaining Ring	R52	2
5	TS-0270051	Set Screw	5/16-18x1/2	1
6	JWBS20QT-506	Upper Wheel Shaft		1
7	JWBS20QT-507	Upper Wheel Shaft Bracket		1
8	TS-155010	Flat Washer	M16	1
9	JWBS18-214	Hex Nut	5/8-18 UNF R.H.	1
10	JWBS20QT-510	Upper Wheel Bracket Base		1
11	JWBS20QT-511	Bracket Shaft		1
12	JWBS20QT-512	Elevator Bracket		1
13	JWBS20QT-513	Spring		1
14	JWBS20QT-514	Adjustment Screw		1
15	JWBS20QT-515	Thrust Bearing		1
16	JWBS20QT-516	Plate		1
17	TS-0256051	Button Head Socket Screw	3/8-16x1	8
18	JWBS20QT-518	Blade Tension Arm Assembly		1
19	JWBS20QT-519	Plate		2
20	JWBS20QT-520	Support Bracket		2
21	JWBS20QT-521	Blade Width/Tension Scale		1
22	TS-0206021	Socket Head Cap Screw	#10-24x1/2	4
23	JWBS20QT-523	Rack		1
24	TS-0254031	Button Head Socket Screw	1/4-20x5/8	1
25	TS-081C022	Pan Head Machine Screw	#10-24x3/8	2
26	TS-0720091	Lock Washer	3/8	1
27	JWBS20QT-527	Wing Nut	3/8	1
28	JWBS20QT-528	Lock Knob		1
29	TS-0680041	Flat Washer	3/8	6
30	TS-0060061	Hex Cap Screw	3/8-16x1-1/4	6
31	JWBS20QT-531	Blade Width Gauge Plate		1
32	JWBS20QT-532	Upper Wheel		1
33	JWBS20-21	Tire		1
34	TS-0680091	Flat Washer	3/4	1
35	JWBS20-22	Hex Nut	3/4-16UNF L.H.	1
36	JWBS20QT-536	Blade	150"L x 1"W x 0.028"T x 3TPI	1
37	TS-0050011	Hex Cap Screw	1/4-20x1/2	2
38	PM2000-293	Magnetic Switch	3HP, 1Ph	1
	PM2000-293A	Magnetic Switch	5HP, 1Ph	1
39	JWBS20QT-539	Upper Front Door		1
	JWBS18-139A	Seal Strip, 29.92"L (not shown)	cut to fit 21.26"	1
40	JWBS18-140	JET Plaque		1
41	JWBS18-141	Warning Label		1
42	JWBS20-542	Door Stud		1
43	TS-0561011	Hex Nut	1/4x20	1
44	JWBS18DXA-152	Switch Plate		1
45	JWBS20QT-545	Hand Wheel		1
46	PM2000-298	Safety Key for Magnetic Switch		1
47	TS-0680021	Flat Washer	1/4	2
48	JWBS20QT-548	Scale Shaft		1
49	JWBS20QT-549	Gear Wheel		1
50	JWBS20QT-550	Pointer		1
51	TS-0720051	Lock Washer	#10	8
52	TS-069204	Flat Washer	#10	6
53	TS-0720071	Lock Washer	1/4	2
54	TS-081C032	Pan Head Machine Screw	#10-24x1/2	2
55	JWBS18DX-147	Tracking Window		1

Index No.	Part No.	Description	Size	Qty
56	TS-0560071	Hex Nut	#10-24	2
57	2013-333	Spacer		1
58	JWBS18DXA-164	Grip		1
59	JWBS18DXA-163	Blade Warning Label		1
60	JWBS20QT-560	Tension Status Label		1
61	JWBS18DXA-168	Spring Plate		1
62	TS-081C052	Screw	#10-24 x 3/4	1

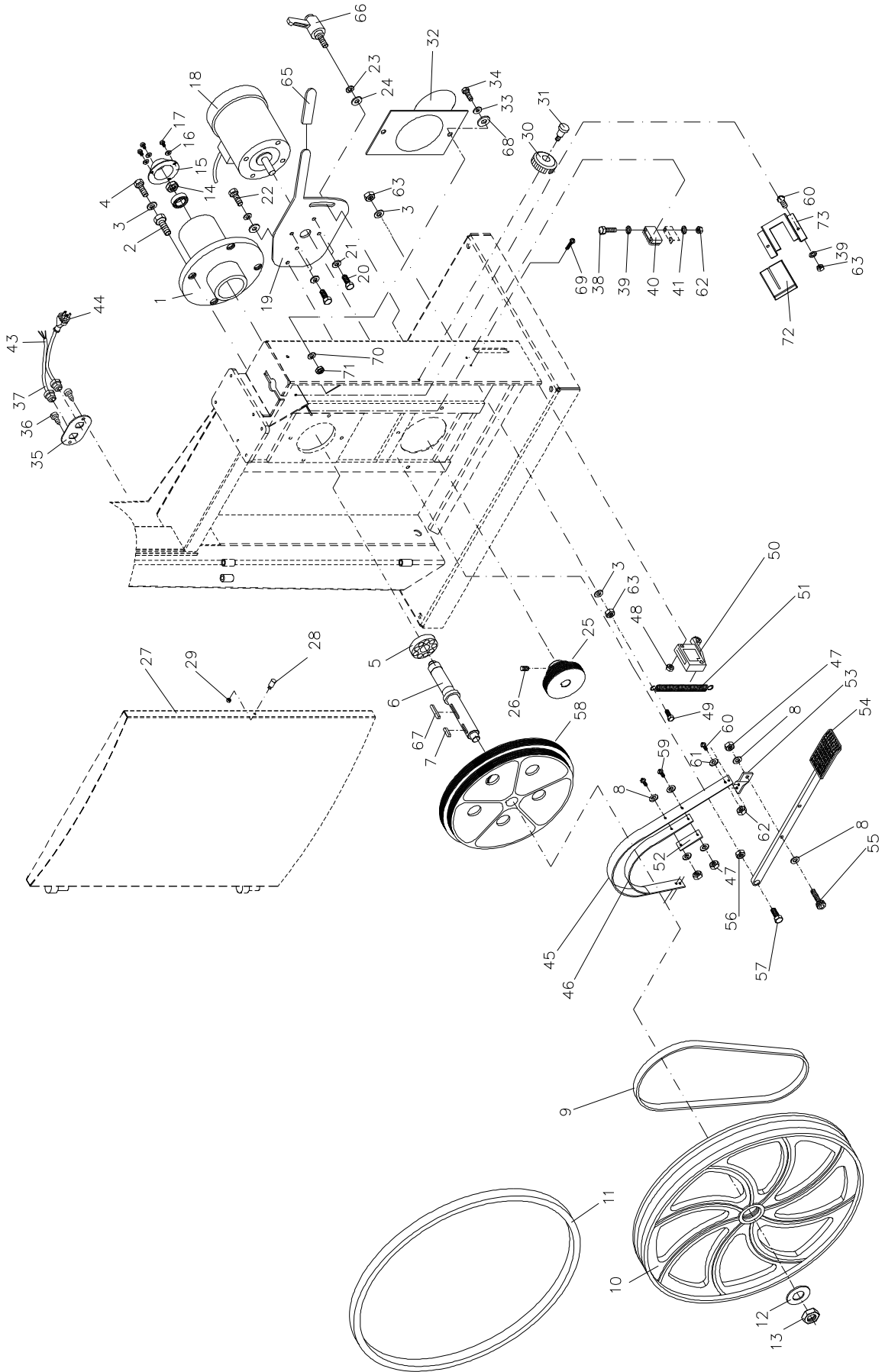


Lower Wheel and Motor Assembly (20QT)

Index No.	Part No.	Description	Size	Qty
1	JWBS20-201	Bearing Base		1
2	JWBS20-62	Adjusting Bolt		4
3	TS-0720091	Lock Washer	3/8	6
4	TS-0060111	Hex Cap Screw	3/8x2-1/2	4
5	BB-6206ZZ	Ball Bearing	6206	2
6	JWBS20QT-206	Spindle		1
7	JWBS20-49	Key	7x7x25	1
8	TS-0680021	Flat Washer	1/4	12
9	JWBS20QT-209	V-Belt	520J	1
10	JWBS20-532	Lower Wheel		1
11	JWBS20-21	Tire		1
12	TS-0680091	Flat Washer	3/4	1
13	JWBS20-22	Hex Nut	3/4-16UNF L.H	1
14	JWBS20-214	Hex Nut	3/4-16UNF R.H	1
15	JWBS20-215	Bearing Cover		1
16	TS-0720071	Lock Washer	1/4	3
17	JWBS20-217	Screw	1/4x3/8	3
18	JWBS18DX-218A	Motor	3HP, 1Ph, 230V Only	1
	JWBS18DX-218ASC	Starting Capacitor (not shown)	300MFD, 125VAC	1
	JWBS18DX-218ARC	Running Capacitor (not shown)	60µf, 250VAC	1
	JWBS18DX-218ACC	Capacitor Cover (not shown)		1
	VBS18MW-218JB	Junction Box (not shown)		1
	VBS18MW-218JBC	Junction Box Cover (not shown)		1
	JWBS20-218E	Motor Fan (not shown)		1
	JWBS20-218F	Motor Fan Cover (not shown)		1
	JWBS20-218G	Centrifugal Switch (not shown)		1
	JWBS20QT-218	Motor	5HP, 1Ph, 230V	1
	JWBS20QT-218MF	Motor Fan (not shown)	5HP	1
	JWBS20QT-218MFC	Motor Fan Cover (not shown)	5HP	1
	JWBS20QT-218SC	Starting Capacitor (not shown)	300MFD, 250VAC	1
	JWBS20QT-218RC	Running Capacitor (not shown)	50µf, 450VAC	1
	JWBS20QT-218CC	Capacitor Cover (not shown)		1
	JWBS20QT-218JB	Junction Box (not shown)		1
	VBS18MW-218JBC	Junction Box Cover (not shown)		1
	JWBS20QT-218CS	Centrifugal Switch (not shown)		1
19	JWBS20QT-219	Motor Bracket		1
20	TS-0081031	Hex Cap Screw	5/16-18x3/4	4
21	TS-0680031	Flat Washer	5/16	4
22	TS-0060051	Hex Cap Screw	3/8-16x1	1
23	TS-0720091	Lock Washer	3/8	2
24	TS-0680041	Flat Washer	3/8	2
25	JWBS20QT-225	Motor Pulley		1
26	TS-0270031	Set Screw	5/16-18x3/8	2
27	JWBS20QT-227	Lower Front Door		1
	JWBS18-139A	Seal Strip, 29.92"L (not shown)	cut to fit 28.74"	1
28	JWBS20-542	Door Stud		1
29	TS-0561011	Hex Nut	1/4-20	1
30	JWBS20-2	Lock Knob		1
31	TS-081F052	Pan Head Machine Screw	1/4-20x3/4	1
32	JWBS20-8	Dust Chute		1
33	TS-0680031	Flat Washer	5/16	2
34	TS-0051051	Hex Cap Screw	5/16-18x1	2
35	JWBS20QT-235	Cord Plate	for 3HP	1
	PM1800-251	Cord Plate	for 5HP	1
36	TS-081C032	Pan Head Machine Screw	#10-24x1/2	2
37	JWBS18-237	Strain Relief Bushing	for 3HP	2
	JWBS20X-237A	Strain Relief Bushing	for 5HP	2

Index No.	Part No.	Description	Size	Qty
38	TS-081C082	Pan Head Machine Screw	#10-24x1-1/2	2
39	TS-069204	Flat Washer	#10	4
40	JWBS18-240	Brush		1
41	TS-0720051	Lock Washer	#10	2
43	JWBS18DX-243A	Motor Cord	for 3HP	1
	JWBS20QT-243	Motor Cord	for 5HP	1
44	JWBS18DX-244A	Power Cord	for 3HP	1
	JWBS20QT-244	Power Cord	for 5HP	1
45	JWBS20-81	Brake Band		1
46	JWBS20-93	Brake Belt		1
47	TS-0561011	Hex Nut	1/4-20	6
48	TS-1540021	Hex Nut	M4	2
49	TS-0060111	Hex Cap Screw	3/8-16x2-1/2	1
50	JWBS20-88	Brake Switch		1
51	JWBS20-84	Spring		1
52	JWBS24-81A	Plate		2
53	JWBS20-82	Brake Locking Bracket		2
54	JWBS20-254	Brake Pedal		1
55	TS-0207061	Socket Head Cap Screw	1/4-20x1	1
56	TS-0561031	Hex Nut	3/8-16	1
57	TS-0060081	Hex Cap Screw	3/8-16x1-3/4	1
58	JWBS20QT-258	Spindle Pulley		1
59	TS-0050021	Hex Cap Screw	1/4-20x5/8	2
60	TS-081C032	Pan Head Machine Screw	#10-24x1/2	6
61	TS-069204	Flat Washer	#10	4
62	TS-0560071	Hex Nut	#10-24	8
63	TS-0561031	Hex Nut	3/8-16	2
	JWBS20-264	Brake Switch Cord (not shown)		1
65	JWBS18DXA-262	Grip		1
66	JWBS18DXA-263	Lock Handle		1
67	JWBS20QT-267	Key	7x7x40	1
68	JWBS18DX-254	Plastic Washer		1
69	TS-2284302	Pan Head Machine Screw	M4x30	2
70	TS-0720081	Lock Washer	5/16	2
71	TS-0561021	Hex Nut	5/16-18	2
72	JWBS18DX-249	Bracket		1
73	JWBS18DX-250	Shelf		1

Lower Wheel and Motor Assembly (20QT)



Blade Guide Assembly (20QT)

Index No.	Part No.	Description	Size	Qty
1	TS-0051051	Hex Cap Screw	5/16-18x1	4
2	TS-0720081	Lock Washer	5/16	4
3	TS-0680031	Flat Washer	5/16	8
4	JWBS20-304	Guide Bar Bracket		1
5	JWBS18-305	Worm		1
6	JWBS18-306	E-Ring	E-8	2
7	JWBS18-307	Gear Base		1
8	JWBS18-308	Bushing		1
9	JWBS18-309	C-Ring	S-12	2
10	JWBS18-310	Shaft		1
11	JWBS18-311	Gear		1
12	TS-0208071	Socket Head Cap Screw	5/16-18x1-1/4	2
13	JWBS20-313	Lock Knob	5/16	1
14	JWBS20-314	Plate		1
15	TS-0051011	Hex Cap Screw	5/16-18x1/2	4
16	JWBS20-316	Guide Bar		1
17	JWBS20QT-317	Pointer		1
19	TS-0050011	Hex Cap Screw	1/4-20x1/2	1
20	JWBS20QT-320	Blade Guard		1
21	TS-0680021	Flat Washer	1/4	6
22	TS-0720071	Lock Washer	1/4	2
23	TS-0050021	Hex Cap Screw	1/4-20x5/8	2
24	JWBS20-324	Wing Bolt		2
25	JWBS18DX-325	Bracket Shaft		1
26	JWBS20-326	C-Ring		10
27	BB-6202ZZ	Ball Bearing	6202	10
28	JWBS20-328	Spacer		4
29	JWBS20-329	Upper Guide Shaft		2
30	TS-0267041	Set Screw	1/4-20x3/8	2
31	JWBS20-2	Lock Knob		1
32	TS-081F052	Pan Head Machine Screw	1/4-20x3/4	1
33	JWBS18-333	Hand Wheel		1
34	TS-0267041	Set Screw	1/4-20x3/8	1
35	JWBS20-103A	Handle		1
36	JWBS18DX-336	Cutting Height Scale		1
37	JWBS18DX-337	Bracket		1
38	JWBS18DX-338	Base		1
39	JWBS20-339	Threaded Lock Bushing		1
40	JWBS20-340	Bolt		1
41	JWBS18DX-341	Lock Knob		1
42	JWBS20-342	Screw		2
44	JWBS20-344	Guide Bar Bracket		1
45	TS-0270031	Set Screw	5/16-18x3/8	2
46	TS-0720111	Lock Washer	1/2	1
47	TS-0561051	Hex Nut	1/2-13	1
48	TS-1521011	Set Screw	M4x4	8
49	JWBS20-349	Thumb Screw		2
50	TS-0207031	Socket Head Cap Screw	1/4-20x5/8	3
51	TS-0207021	Socket Head Cap Screw	1/4-20x1/2	2
52	JWBS20-352	Bracket		1
53	JWBS18DXA-353	Thumb Screw	1/4-20x1/2	2
54	JWBS20-354	Bearing Support		2
55	JWBS20-355	Lock Bushing		1
56	TS-0720071	Lock Washer	1/4	1
57	TS-0206021	Socket Head Cap Screw	#10-24x1/2	2
58	JWBS18DX-357	Bearing Bracket		1
59	JWBS18DX-360	Shaft		1

Index No.	Part No.	Description	Size	Qty
60	JWBS20-360	Bracket		1
61	JWBS18DX-361	Adjusting Screw		1
62	JWBS18DX-362	Adjusting Bracket		1
63	JWBS18DX-363	Nut		1
64	TS-0267021	Set Screw	1/4-20x1/4	1
65	JWBS18DX-365	Set Screw, Special		1
66	JWBS18DX-366	Adjustment Handle		2
67	TS-0680031	Flat Washer	5/16	1
68	JWBS20-329A	Lower Guide Shaft		2
69	TS-0561011	Hex Nut	1/4-20	1
70	6295293	Locking Handle		1
71	JWBS18DX-359	Locking Handle		1
72	TS-0207041	Socket Head Cap Screw	1/4-20x3/4	2

Blade Guide Assembly

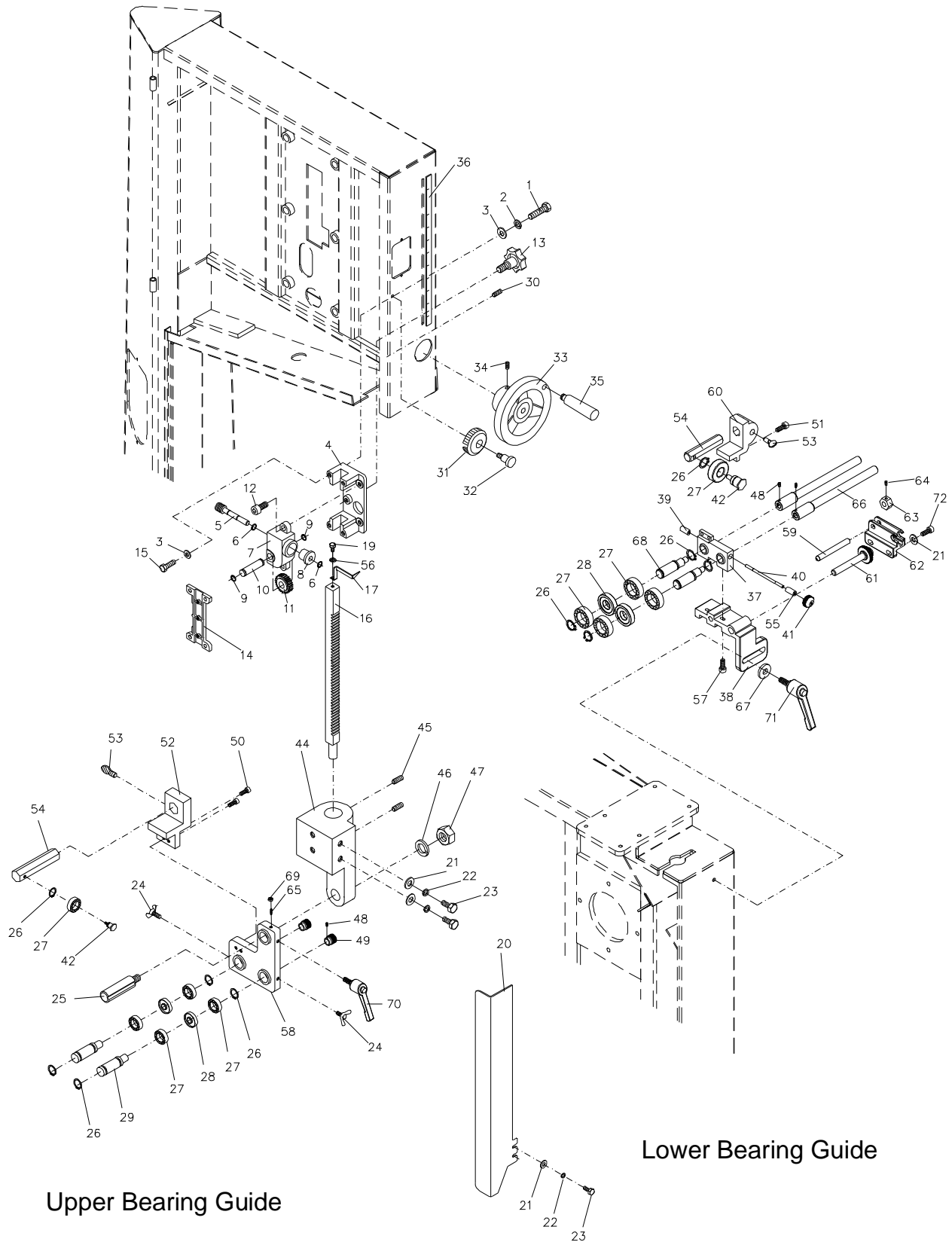
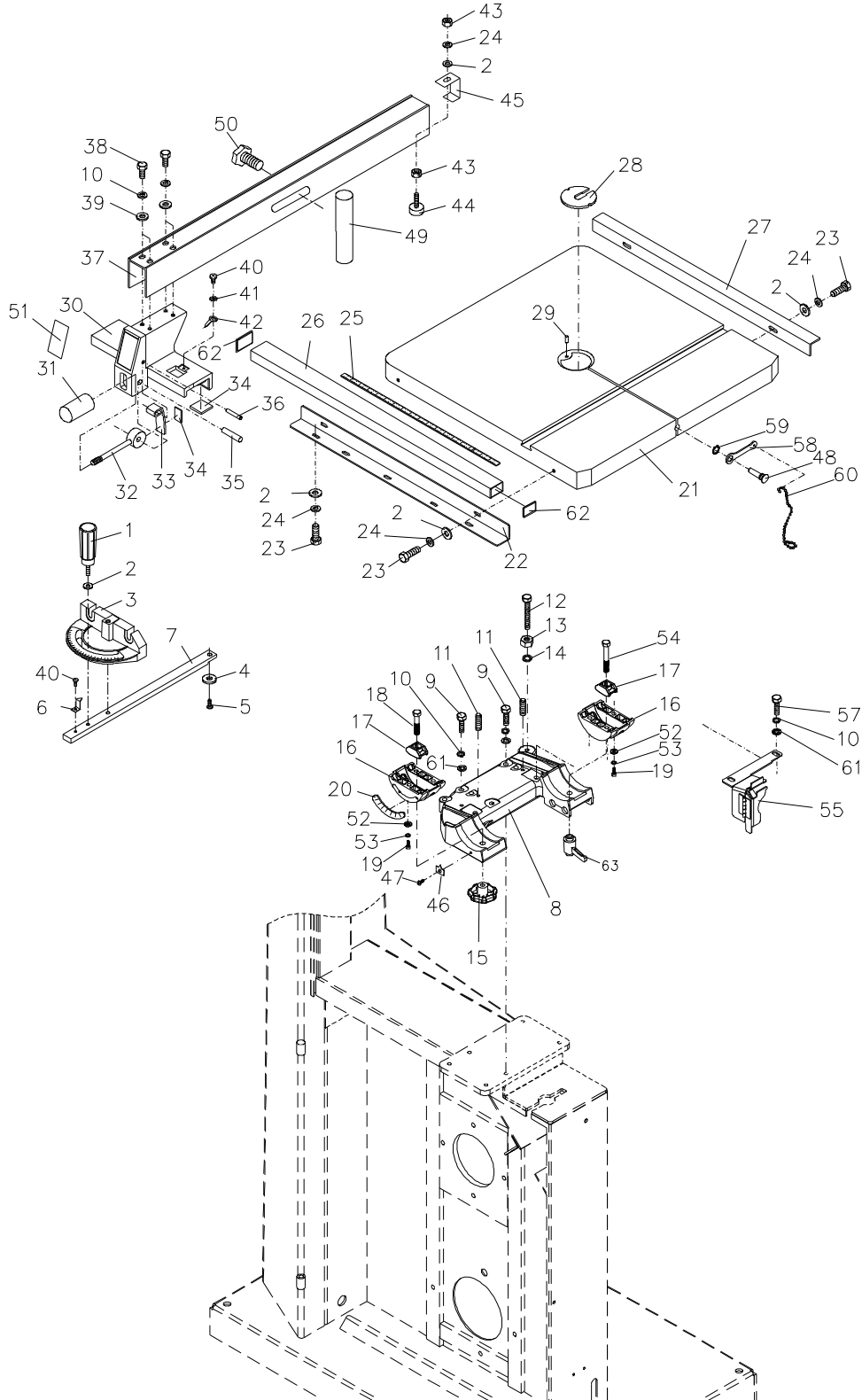


Table and Fence Assembly (20QT)

Index No.	Part No.	Description	Size	Qty
1	JWBS18-401	Locking Handle		1
2	TS-0680021	Flat Washer	1/4	11
3	JWBS18-403	Miter Gauge Body		1
4	JWBS20-156	Guide Disc		1
5	JWBS18-405	Screw	M6x8	1
6	JWBS18-406	Pointer		1
7	JWBS18-407	Guide Bar		1
8	JWBS18DX-408	Trunnion Support Bracket		1
9	TS-0051071	Hex Cap Screw	5/16-18x1-1/2	4
10	TS-0720081	Lock Washer	5/16	8
11	TS-0270061	Set Screw	5/16-18x5/8	2
12	TS-0060111	Hex Cap Screw	3/8-16x2-1/2	1
13	TS-0561031	Hex Nut	3/8-16	1
14	TS-0720091	Lock Washer	3/8	1
15	JWBS18-415	Lock Knob		2
16	JWBS18X-416	Trunnion		2
17	JWBS18-417	Trunnion Clamp Shoe		2
18	TS-1491081	Hex Cap Screw	M10x50	1
19	TS-1503041	Socket Head Cap Screw	M6x16	6
20	JWBS18-420	Scale		1
21	JWBS20-421	Table		1
22	JWBS18-422W	Front Rail		1
23	TS-0050021	Hex Cap Screw	1/4-20x5/8	9
24	TS-0720071	Lock Washer	1/4	10
25	JWBS18-425	Scale		1
26	JWBS20-426	Guide Rail		1
27	JWBS18-427W	Rear Rail		1
28	JWBS20-144	Table Insert		1
29	JWBS20-145	Roll Pin	3x10	1
30	JWBS18-430	Fence Body		1
31	JWBS18-431	Handle		1
32	JWBS18-432	Cam		1
33	JWBS18-433W	Lock Plate		1
34	JWBS18-434	Pad		5
35	JWBS18-435	Pin		1
36	JWBS18-436	Pin		1
37	JWBS20-437EA	Fence		1
38	TS-0208041	Socket Head Cap Screw	5/16-18x3/4	4
39	TS-0680031	Flat Washer	5/16	4
40	TS-0810012	Screw	#10-24x1/4	2
41	TS-0733031	External Tooth Lock Washer	#10	1
42	JWBS18-442	Pointer		1
43	TS-0561011	Hex Nut	1/4-20	2
44	JWBS18-444	Sliding Pad		1
45	JWBS18-445	Rear Hook		1
46	JWBS18-446	Pointer		1
47	JWBS18-447	Screw	M5x8	1
48	JWBS18DX-448	Table Pin		1
49	JWBS18-449E	Resaw Guide		1
50	JWBS20-450	Lock Knob		1
	JWBS18-MGCP	Miter Gauge Assembly		1
	JWBS20QT-FCP	Fence Assembly		1
51	JWBS18-451	JET Fence Label		1
52	TS-1550041	Flat Washer	M6	6
53	TS-1551041	Lock Washer	M6	6
54	TS-2210651	Hex Cap Screw	M10x65	1
55	JWBS18DX-455	Lower Blade Guard		1

Index No.	Part No.	Description	Size	Qty
57	TS-0051091	Hex Cap Screw	5/16-18x2	2
58	40-0260	Wrench		1
59	JWBS18DX-459	C-Ring	S-10	1
60	JWBS18DX-460	Link Chain		1
61	TS-0680031	Flat Washer	5/16	6
62	2013-285	End Cover		2
63	JWBS20QT-463	Lock Handle		1





427 New Sanford Road
LaVergne, TN 37086-4184, USA
Phone: 800-274-6848
www.jettools.com