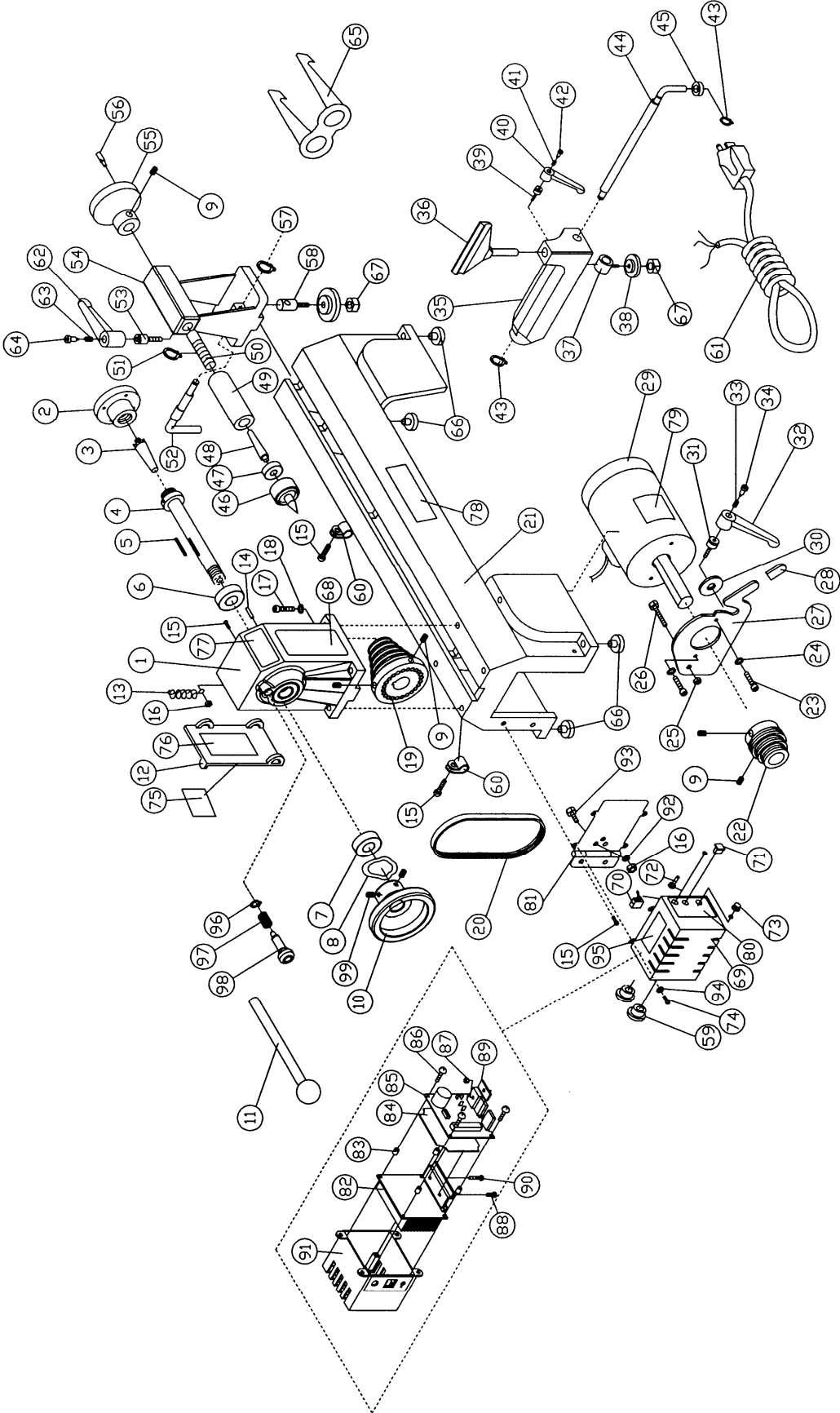


Parts Breakdown for JML-1014VSI Lathe



Parts List for JML-1014VSI Lathe

To order parts or reach our service department, call 1-800-274-6848 between 7:30 a.m. and 6:00 p.m. (CST), Monday through Friday. Having the Model Number and Serial Number of your machine available when you call will allow us to serve you quickly and accurately.

Index No.	Part No.	Description	Size	Qty
1	JML1014-101	Headstock		1
2	JML-2	Faceplate	3"	1
3	JML-3	Spur Center	MT2	1
	JML-3A	Center Point for Spur Center (not shown)		1
4	JML-4	Spindle	8 TPI	1
5	JML-5	Key	5x25	1
6	BB-6005VV	Ball Bearing	6005VV	1
7	BB-6004VV	Ball Bearing	6004VV	1
8	JML-8	Wave Washer		1
9	TS-0267041	Socket Set Screw	1/4-20x3/8	5
10	JML1014-110	Handwheel		1
11	JML-11	Drift Rod		1
12	JML-12W	White Spindle Pulley Door		1
13	JML-13	Spring		1
14	JML-14	Roll Pin	3x10	2
15	TS-081C042	Phillips Pan Head Machine Screw	#10-24x5/8	5
16	TS-0560071	Hex Nut	#10-24NC	3
17	TS-0207061	Socket Head Cap Screw	1/4-20x1	4
18	TS-0720071	Lock Washer	1/4	4
19	JML1014VSI-119	Spindle Pulley		1
20	JML-20	V-Belt		1
21	JMLVS-21	White Bed		1
22	JMLVS-22	Motor Pulley		1
23	TS-0207031	Socket Head Cap Screw	1/4-20x5/8	2
24	TS-0680021	Flat Washer	1/4	2
25	TS-0640081	Nylon Lock Hex Nut	5/16-18NC	1
26	TS-0051061	Hex Cap Screw	5/16-18x1-1/4	1
27	JMLVS-27	Motor Bracket		1
28	JML-34W	White Handle Protector		1
29	JMLVS-29	DC Motor	1/2HP, 1Ph, 115V	1
	JMLVS-29-1	Motor Carbon Brush (not shown)		2
30	TS-0680031	Flat Washer	5/16	1
31	JML-37	Stud		1
32	JML-38	Handle		1
33	JML-39	Spring		1
34	JML-40	Stud		1
35	JML-41W	White Tool Rest Body		1
36	JML-42	Tool Rest	6"	1
37	JML-43	Bolt		1
38	JML-44	Clamp		2
39	JML-45	Stud		1
40	JML-46	Handle		1
41	JML-47	Spring		1
42	JML-48	Stud		1
43	JML-49	C-Ring		2
44	JML-50	Eccentric Rod		1
45	JML-51	Bushing		1
46	JML-52	Live Center Head		1
	JML-52A	Center Point for Live Center (not shown)		1
47	BB-6002ZZ	Ball Bearing		1
48	JML-54	Live Center Shaft		1
	708331	Live Center Assembly (not shown)		1
49	JML-55	Tailstock Spindle		1

50	JML-56	Lead screw		1
51	JML-57	E-Ring		1
52	JML-58	Eccentric Rod		1
53	JML-59	Stud		1
54	JML-60W	White Tailstock		1
55	JML-61	Handwheel		1
56	JML-62	Handle		1
57	JML-63	C-Ring		1
58	JML-64	Bolt		1
59	JML-70	Strain Relief Bushing		2
60	JML-72	Cord Clamp		2
61	JML-75	Power Cord		1
62	JML-76	Handle		1
63	JML-77	Spring		1
64	JML-78	Stud		1
65	JML-79	Safety Goggles		1
66	JML-80	Rubber Feet		4
67	JML-81	Clamp Nut	M10×1.5P	2
68	JML-82	Warning Label		1
69	JMLVS-83	Controller Assembly (Items 70-73, 80, 82-91)		1
70	JMLVS-84	ON/OFF Switch		1
71	JMLVS-85	Circuit Breaker		1
72	JMLVS-86	Control Pot Assembly		1
73	JMLVS-87	Knob		1
74	TS-081B012	Phillips Pan Head Machine Screw	#8-32×1/4	4
75	JMLVS-89	I.D Label		1
76	JMLVS-90	Speed Label		1
77	JMLVS-91	JET Label		1
78	JMLVS-92	JET Plaque		1
79	JMLVS-93	Motor Label		1
80	JMLVS-95	Control Panel Label		1
81	JMLVS-96	Hinge Plate		1
82	JMLVS-97	Heat Sink		1
83	JMLVS-98	Spacer		4
84	JMLVS-99	Insulator		1
85	JMLVS-100	Circuit Board		1
86	JMLVS-101	Tap Screw		4
87	JMLVS-102	Hex Nut	M4×0.7P	1
88	JMLVS-103	Screw	M4×0.7P×12	1
89	JMLVS-104	Clamp Bar		1
90	JMLVS-105	Screw	M4×0.7P×20	1
91	JMLVS-106	Plastic Cover		1
92	JWL1442-170	Star Washer	3/16	2
93	JMLVS-108	Hex Cap Screw	#10-24 ×3/8	2
94	TS-0720041	Lock Washer	#8	4
95	JMLVS-109	Speed Chart Label		1
96	JML1014-187	C-Ring	STW-9	1
97	JML1014-188	Spring		1
98	JML1014-189	Index Pin		1
99	TS-0267021	Socket Set Screw	1/4-20×1/4	2

Electrical Connections (JML-1014VSI)

