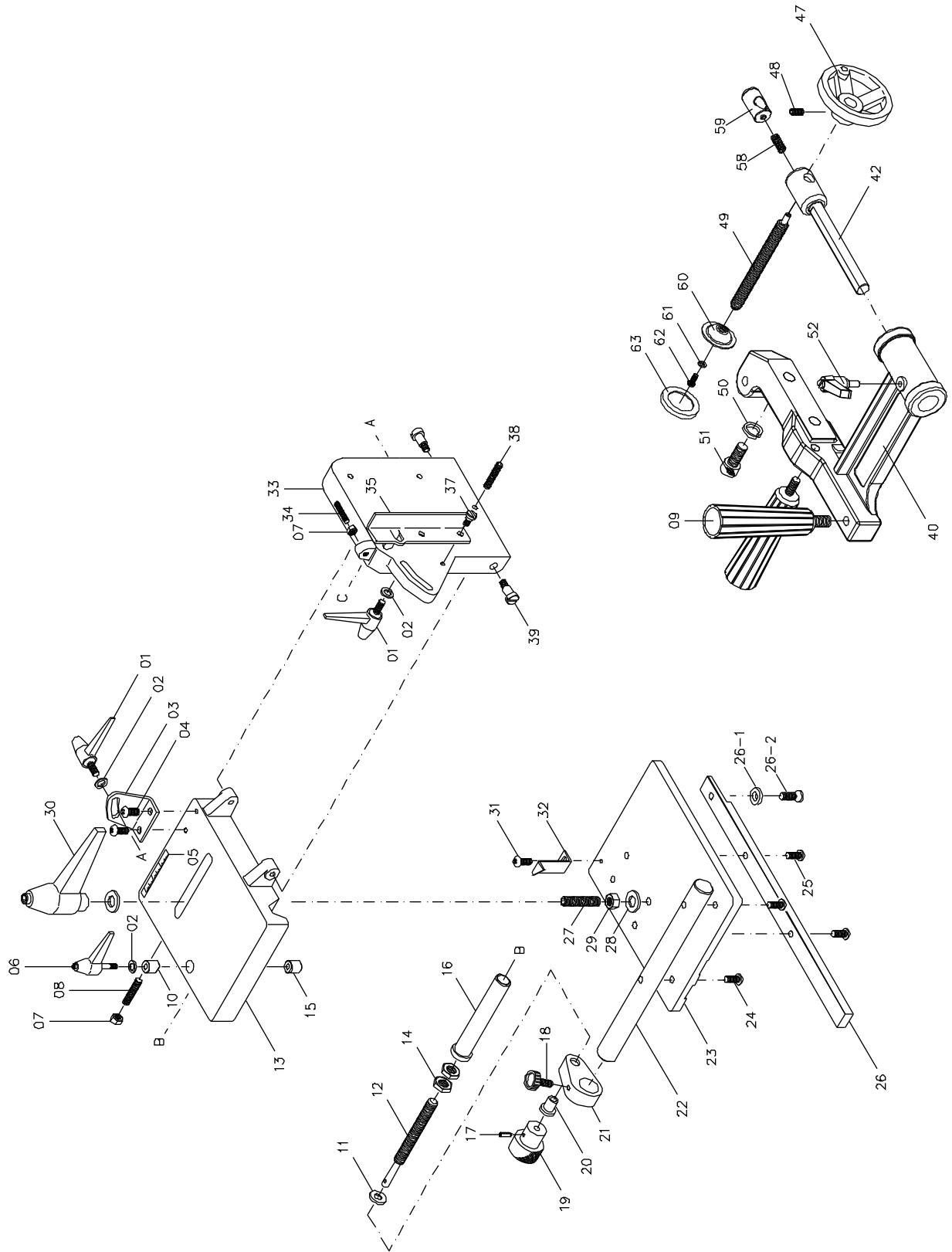


## Parts List

Index No.	Part No.	Description	Size	Qty
1	JTG10-1	Locking Lever	M6x22	2
2	TS-0680021	Flat Washer	1/4"	3
3	JTG10-3	Bracket		1
4	TS-1533032	Pan Head Machine Screw	M5x10	2
5	JTG10-5	Scale		1
6	JTG10-6	Locking Lever	M6x30	1
7	TS-1540041	Hex Nut	M6	2
8	JTG10-8	Socket Set Screw	M6x40	1
9	JTG10-9	Handle		2
10	JTG10-10	Lock Bushing		1
11	TS-1550061	Flat Washer	M8	1
12	JTG10-12	Lead Screw		1
13	JTG10-13A	Slide		1
14	TS-1540071	Hex Nut	M10	2
15	JTG10-15	Threaded Bushing		1
16	JTG10-16	Guide Bushing		1
17	JTG10-17	Roll Pin	M3x20	1
18	JTG10-18	Knob		1
19	JTG10-19	Knob		1
20	JTG10-20	Bushing		1
21	JTG10-21A	Bracket		1
22	JTG10-22	Guide Rod		1
23	JTG10-23A	Base		1
24	TS-2286202	Pan Head Machine Screw	M6x20	2
25	TS-1534042	Pan Head Machine Screw	M6x12	2
26	JTG10-26	Guide Bar		1
26-1	JTG10-26-1	Guide Washer		1
26-2	TS-081F021	Flat Head Machine Screw	1/4-20 x 3/8	1
27	JTG10-27	Set Screw	M8x50	1
28	TS-0680041	Flat Washer	3/8"	2
29	TS-1540061	Hex Nut	M8	1
30	JTG10-30	Locking Handle	M8	1
31	TS-2284082	Pan Head Machine Screw	M4x8	1
32	JTG10-32	Pointer		1
33	JTG10-33A	Fence		1
34	JTG10-8	Socket Set Screw	M6x40	1
35	JTG10-35	Stop		1
37	JTG10-37	Stud		1
38	TS-1523071	Socket Set Screw	M6x25	1
39	JTG10-39	Stud		2
40	JTG10-40A	Clamp Bracket		1
42	JTG10-42A	Support Shaft		1
47	JTG10-47A	Handwheel		1
48	TS-2276081	Socket Set Screw	M6x8	1
49	JTG10-49A	Clamp Lead Screw		1
50	TS-1551071	Lock Washer	M10	2
51	TS-1505031	Socket Head Cap Screw	M10x25	2
52	JTG10-52	Locking Handle		1
	JTG10-54	Hex Wrench (not shown)	M3	1
	JTG10-55	Hex Wrench (not shown)	M4	1
	JTG10-57	Hex Wrench (not shown)	M8	1
58	JTG10-58	Spring		1
59	JTG10-59	Nut		1
60	JTG10-60	Clamp Plate		1
61	TS-1550041	Flat Washer	M6	1
62	TS-1534042	Pan Head Machine Screw	M6x12	1
63	JTG10-63	Rubber Clamp Plate Cover		1

# Exploded View



**J E T. POWERMATIC®**