

# Parts

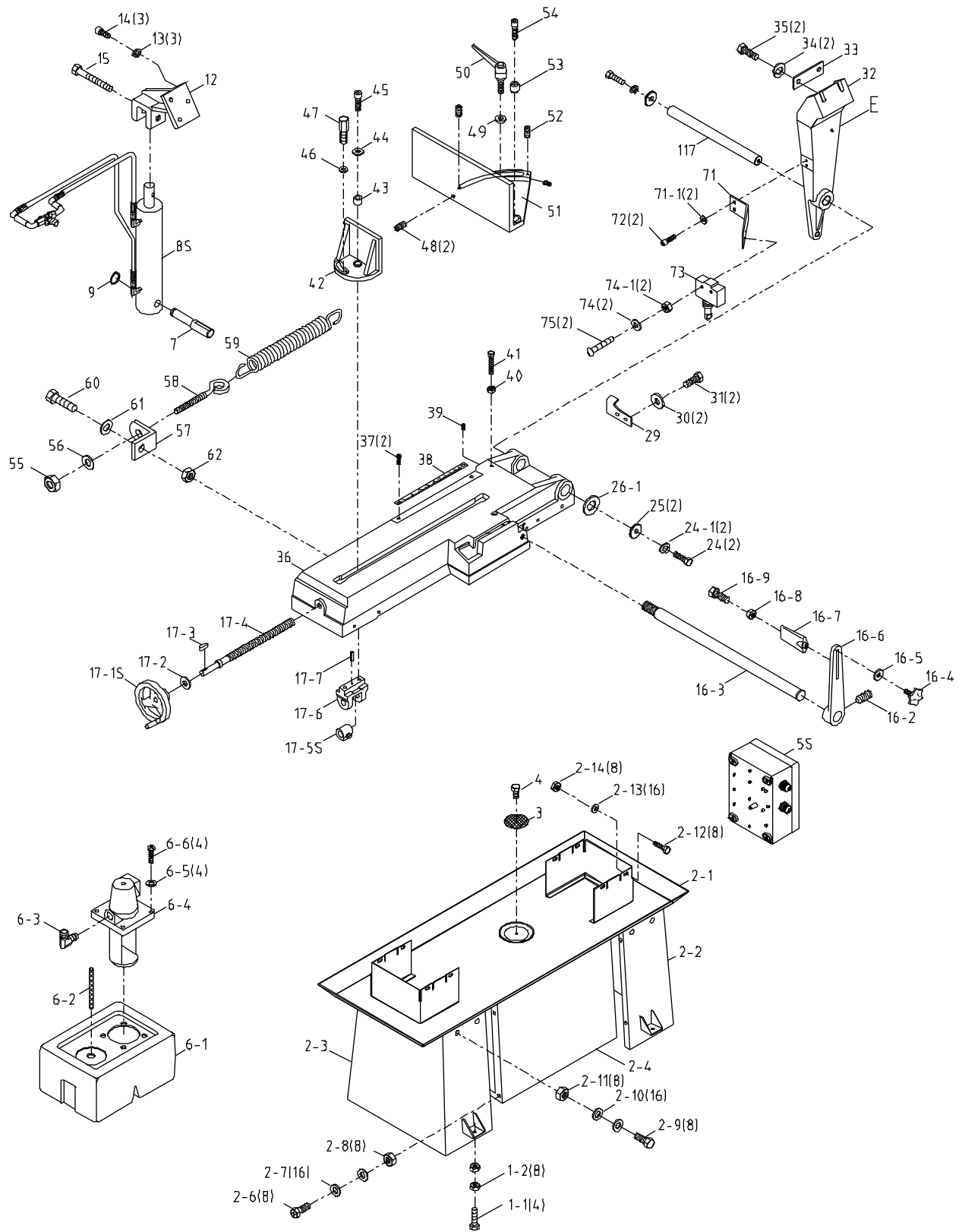
## Saw Stand and Bed

| Index No. | Part No.   | Description                                | Size               | Qty |
|-----------|------------|--|--------------------|-----|
| 1-1       | TS-1499141 | Hex Cap Screw                              | M12x80             | 4   |
| 1-2       | TS-1540081 | Hex Nut                                    | M12                | 8   |
| 2-1       | J-7015-2-1 | Coolant Pan                                |                    | 1   |
| 2-2       | J-7015-2-2 | Right Leg                                  |                    | 1   |
| 2-3       | J-7015-2-3 | Left Leg                                   |                    | 1   |
| 2-4       | J-7015-2-4 | Front Panel/Shelf                          |                    | 1   |
| 2-6       | TS-0050031 | Hex Cap Screw                              | 1/4"-20x3/4        | 8   |
| 2-7       | TS-0680021 | Flat Washer                                | 1/4"               | 16  |
| 2-8       | TS-0561011 | Hex Nut                                    | 1/4"-20            | 8   |
| 2-9       | TS-0060051 | Hex Cap Screw                              | 3/8"-16x1          | 8   |
| 2-10      | TS-0680041 | Flat Washer                                | 3/8"               | 16  |
| 2-11      | TS-0561031 | Hex Nut                                    | 3/8"-16            | 8   |
| 2-12      | TS-1490071 | Hex Cap Screw                              | M8x40              | 8   |
| 2-13      | TS-0680031 | Flat Washer                                | 5/16"              | 16  |
| 2-14      | TS-1540061 | Hex Nut                                    | M8                 | 8   |
| 3         | 7015-3     | Screen                                     |                    | 1   |
| 4         | TS-2246102 | Button Head Socket Screw                   | M6x10              | 1   |
| 5S        |            | Electrical Box Assembly (Reference Only)   |                    | 1   |
| 6-1       | 7015-6-1   | Coolant Tank                               |                    | 1   |
| 6-2       | 7015-6-2   | Hose                                       | 13x19-350mm        | 1   |
| 6-3       | 7015-6-3   | Elbow                                      | PT1/2x1/4"         | 1   |
| 6-4       | J-7015-6-4 | Coolant Pump                               | 1/8HP,115/230V,1Ph | 1   |
| 6-5       | TS-0680021 | Flat Washer                                | 1/4"               | 4   |
| 6-6       | TS-081F052 | Pan Head Machine Screw                     | 1/4"-20x3/4        | 4   |
| 7         | 7015-7     | Pivot Shaft                                |                    | 1   |
| 8S        | 7015-8S    | Cylinder Assembly                          |                    | 1   |
| 9         | 7015-9     | Ext. Retaining Ring                        | S18                | 1   |
| 12        | J-7015-12  | Cylinder Upper Bracket                     |                    | 1   |
| 13        | TS-0720081 | Lock Washer                                | 5/16"              | 3   |
| 14        | TS-1504061 | Socket Head Cap Screw                      | M8x30              | 3   |
| 15        | TS-1505081 | Socket Head Cap Screw                      | M10x50             | 1   |
|           | 7015-16S   | Stock Stop Assembly (Index 16-2 thru 16-9) |                    | 1   |
| 16-2      | TS-1523031 | Socket Set Screw                           | M6x10              | 1   |
| 16-3      | 7015-16-3  | Stop Rod                                   |                    | 1   |
| 16-4      | 7015-16-4  | Knob                                       |                    | 1   |
| 16-5      | TS-0720071 | Lock Washer                                | 1/4"               | 1   |
| 16-6      | 7015-16-6  | Stop Arm                                   |                    | 1   |
| 16-7      | 7015-16-7  | Stop Bracket                               |                    | 1   |
| 16-8      | TS-1540071 | Hex Nut                                    | M10                | 1   |
| 16-9      | TS-1491031 | Hex Cap Screw                              | M10x25             | 1   |
| 17-1S     | 7015-17-1S | Handwheel                                  |                    | 1   |
| 17-2      | TS-0680051 | Flat Washer                                | 7/16"              | 1   |
| 17-3      | 7015-17-3  | Key  | 5x5x15L            | 1   |
| 17-4      | 7015-17-4  | Acme Leadscrew                             |                    | 1   |
| 17-5S     | 7015-17-5S | Acme Nut Assembly                          |                    | 1   |
| 17-6      | 7015-17-6  | Bracket                                    |                    | 1   |
| 17-7      | 7015-17-7  | Pin  |                    | 1   |
| 24        | TS-1505031 | Socket Head Cap Screw                      | M10x25             | 2   |
| 24-1      | TS-2361101 | Lock Washer                                | M10                | 2   |
| 25        | 7015-25    | Pivot Shaft Washer                         |                    | 2   |
| 26-1      | 7015-26-1  | Washer                                     |                    | 1   |
| 29        | 7015-29    | Position Set Bracket                       |                    | 1   |
| 30        | TS-0680031 | Flat Washer                                | 5/16"              | 2   |

## Saw Stand and Bed

| Index No. | Part No.   | Description              | Size           | Qty |
|-----------|------------|--------------------------|----------------|-----|
| 31        | TS-1490031 | Hex Cap Screw            | M8x20          | 2   |
| 32        | J-7015-32  | Rear Pivot Bracket       |                | 1   |
| 33        | 7015-33    | Plate                    |                | 1   |
| 34        | TS-2361101 | Lock Washer              | M10            | 2   |
| 35        | TS-1505051 | Socket Head Cap Screw    | M10x35         | 2   |
| 36        | J-7015-36  | Bed                      |                | 1   |
| 37        | TS-2245102 | Button Head Socket Screw | M5x10          | 2   |
| 38        | 7015-38    | Angle Scale              |                | 1   |
| 39        | TS-1524021 | Socket Set Screw         | M8x10          | 1   |
| 40        | TS-1540061 | Hex Nut                  | M8             | 1   |
| 41        | TS-1490081 | Hex Cap Screw            | M8x45          | 1   |
| 42        | J-7015-42  | Front Moveable Vise Jaw  |                | 1   |
| 43        | 7015-43    | Bushing                  |                | 1   |
| 44        | TS-1550071 | Flat Washer              | M10            | 1   |
| 45        | TS-1505051 | Socket Head Cap Screw    | M10x35         | 1   |
| 46        | 7015-46    | Washer                   | ø10.5xø27xt3mm | 1   |
| 47        | 7015-47    | Bolt                     |                | 1   |
| 48        | 7015-48    | Socket Set Screw         | M8x30          | 2   |
| 49        | 7015-46    | Washer                   | ø10.5xø27xt3mm | 1   |
| 50        | 7015-50    | Locking Handle           |                | 1   |
| 51        | J-7015-51  | Rear Fixed Vise Jaw      |                | 1   |
| 52        | TS-1523031 | Socket Set Screw         | M6x10          | 1   |
| 53        | 7015-53    | Bushing                  |                | 1   |
| 54        | TS-1505051 | Socket Head Cap Screw    | M10x35         | 1   |
| 55        | TS-0561031 | Hex Nut                  | 3/8"-16        | 1   |
| 56        | TS-0680041 | Flat Washer              | 3/8"           | 1   |
| 57        | 7015-57    | Spring Bracket           |                | 1   |
| 58        | 7015-58    | Spring Eye Bolt          |                | 1   |
| 59        | 7015-59    | Spring                   |                | 1   |
| 60        | TS-0081031 | Hex Cap Screw            | 5/16"-18x3/4"  | 1   |
| 61        | TS-0680031 | Flat Washer              | 5/16"          | 1   |
| 62        | TS-0561021 | Hex Nut                  | 5/16"-18       | 1   |
| 71        | 7015-71    | Limit Switch Holder      |                | 1   |
| 71-1      | TS-1550041 | Flat Washer              | M6             | 2   |
| 72        | TS-1534042 | Pan Head Machine Screw   | M6x12          | 2   |
| 73        | 7015-73    | Limit Switch             |                | 1   |
| 74        | TS-1550021 | Flat Washer              | M4             | 2   |
| 74-1      | TS-1540021 | Hex Nut                  | M4             | 2   |
| 75        | TS-2284302 | Pan Head Machine Screw   | M4x30          | 2   |
| 117       | 7015-117   | Pivot Shaft              |                | 1   |

# Saw Stand and Bed – Parts Breakdown



JET-813-060320-A-R1

## Saw Head

| Index No. | Part No.   | Description                             | Size         | Qty |
|-----------|------------|---|--------------|-----|
| 200       | J-7015-200 | Blade Guard                             |              | 2   |
| 201       | 7015-201   | Direction Label                         |              | 1   |
| 202       | TS-2246102 | Knob                                    |              | 2   |
| 204       | TS-1504051 | Socket Head Cap Screw                   | M8x25        | 2   |
| 205       | TS-1551061 | Lock Washer                             | M8           | 2   |
| 206       | TS-1550061 | Flat Washer                             | M8           | 2   |
| 207       | 7015-207   | Knob                                    |              | 2   |
| 208       | TS-1550071 | Flat Washer                             | M10          | 2   |
| 209       | J-7015-209 | Blade Guide Support Arm                 |              | 2   |
| 209-1     | 7015-209-1 | Blade Direction Label                   |              | 2   |
| 210       | 7015-210   | Gib                                     |              | 2   |
| 211       | 7015-211   | Ext. Retaining Ring                     | ø8           | 4   |
| 212       | BB-608ZZ   | Bearing                                 | 608ZZ        | 10  |
| 213       | 7015-213   | Eccentric Guide                         |              | 2   |
| 214       | 7015-214   | Eccentric Guide                         |              | 2   |
| 215       | TS-1503051 | Socket Head Cap Screw                   | M6x20        | 4   |
| 216       | 7015-216   | Carbide Blade Guide                     |              | 4   |
| 217       | 7015-217   | Bearing Shaft                           |              | 2   |
| 218       | TS-1523011 | Socket Set Screw                        | M6x6         | 4   |
| 219       | J-7015-219 | Left Guide Bracket                      |              | 1   |
| 220-1     | 7015-220-1 | Valve                                   |              | 2   |
| 220-2     | 7015-220-2 | Hose                                    | ø6           | 2   |
| 220-3     | 7015-220-3 | Straight Connector                      |              | 2   |
| 220-4     | 7015-220-4 | Hold Down Clamp                         |              | 2   |
| 220-5     | TS-2361061 | Lock Washer                             | M6           | 4   |
| 220-6     | TS-2246122 | Button Head Socket Screw                | M6x12        | 4   |
| 221       | J-7015-221 | Right Guide Bracket                     |              | 1   |
|           | 7015-222S  | Brush Assembly (Index 222-1 thru 222-5) |              | 1   |
| 222-1     | 7015-222-1 | Brush Holder                            |              | 1   |
| 222-2     | 7015-222-2 | Blade Brush                             |              | 1   |
| 222-3     | TS-1550041 | Flat Washer                             | M6           | 2   |
| 222-4     | TS-1540041 | Hex Nut                                 | M6           | 2   |
| 222-5     | TS-1482071 | Hex Cap Screw                           | M6x35        | 1   |
| 223       | TS-2246122 | Button Head Socket Screw                | M6x12        | 1   |
| 223-1     | TS-2361061 | Lock Washer                             | M6           | 1   |
| 224       | TS-2246122 | Button Head Socket Screw                | M6x12        | 2   |
| 225       | J-7015-225 | Blade/Brush Guard                       |              | 1   |
| 226       | TS-1540041 | Hex Nut                                 | M6           | 2   |
| 300       | TS-1504031 | Socket Head Cap Screw                   | M8x16        | 4   |
| 301       | 7015-301   | Handle                                  |              | 2   |
| 302       | 7015-302   | Knob                                    |              | 2   |
| 302-1     | TS-1550031 | Flat Washer                             | M5           | 6   |
| 302-2     | TS-2245102 | Button Head Socket Screw                | M5x10        | 6   |
| 303       | J-7015-303 | Left Blade Wheel Cover                  |              | 1   |
| 304       | TS-2361081 | Lock Washer                             | M8           | 4   |
| 305       | TS-1540061 | Hex Nut                                 | M8           | 4   |
| 306       | J-7015-306 | Right Blade Wheel Cover                 |              | 1   |
| 306-1     | 7015-306-1 | Padding Strip                           |              | 2   |
| 307       | TS-1490031 | Hex Cap Screw                           | M8x20        | 1   |
| 308       | 7015-308   | Washer                                  | ø16xø30xt3mm | 1   |
| 309       | BB-6205VV  | Bearing                                 | 6205-2RS     | 2   |
| 310       | 7015-310   | Idler Wheel                             |              | 1   |
| 311       | 7015-311   | Shaft                                   |              | 1   |
| 312       | 7015-312   | Handle                                  |              | 1   |
| 313       | TS-0561031 | Hex Nut                                 | 3/8"-16      | 2   |
| 314       | J-7015-314 | Body Frame                              |              | 1   |

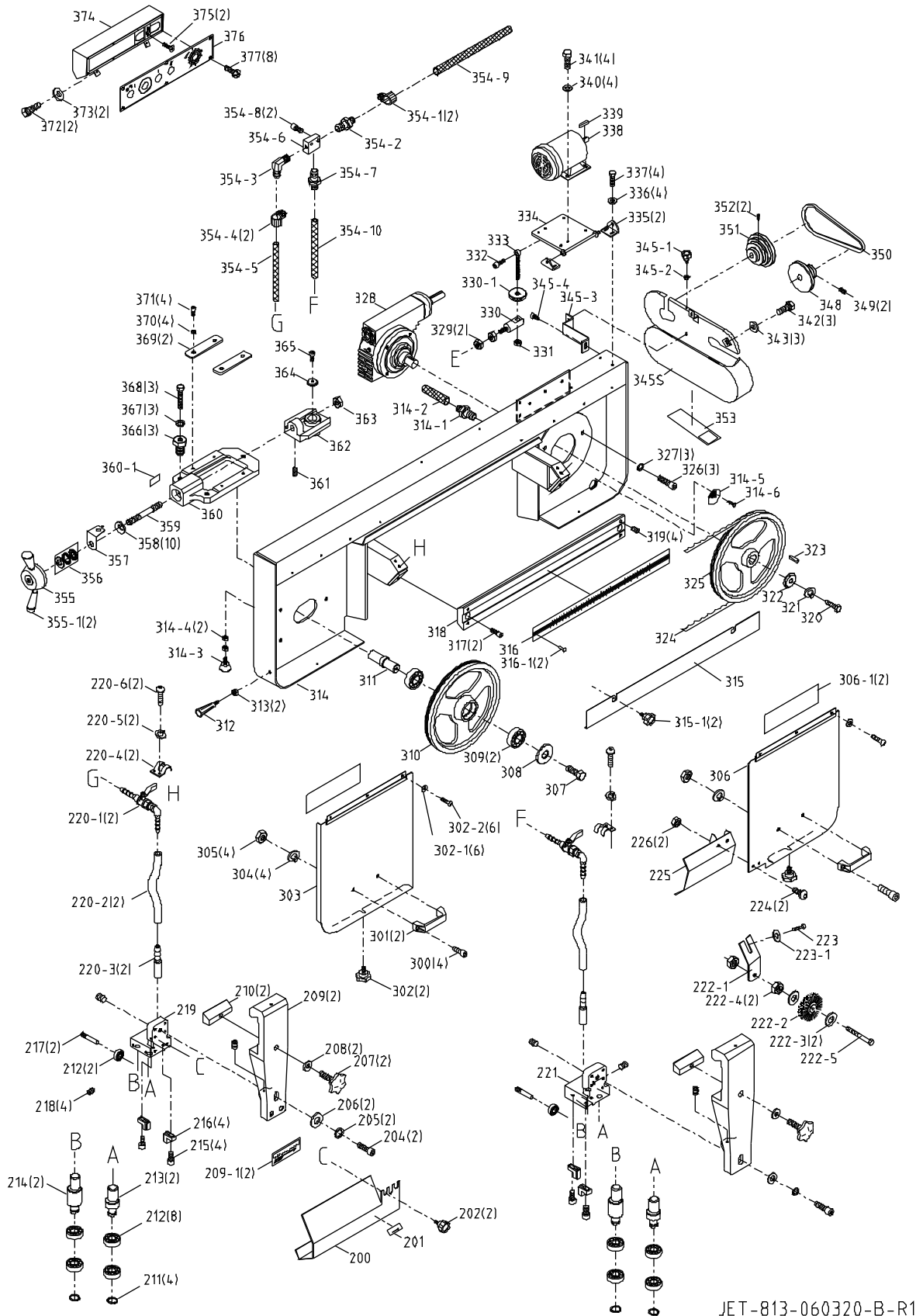
## Saw Head

| Index No. | Part No.    | Description                   | Size                 | Qty |
|-----------|-------------|-------------------------------|----------------------|-----|
| 314-1     | 7015-314-1  | Connector                     | PT1/2"               | 1   |
| 314-2     | 7015-314-2  | Hose                          | 18x24-190mm          | 1   |
| 314-3     | 7015-314-3  | Stop Bolt                     |                      | 1   |
| 314-4     | TS-1540061  | Hex Nut                       | M8                   | 2   |
| 314-5     | 7015-314-5  | Screen                        |                      | 1   |
| 315       | J-7015-315  | Upper Cover                   |                      | 1   |
| 315-1     | 7015-315-1  | Knob                          |                      | 2   |
| 316       | 7015-316    | Scale                         |                      | 1   |
| 316-1     | 7015-316-1  | Rivet                         | ø2x5L                | 2   |
| 317       | TS-1506011  | Socket Head Cap Screw         | M12x20               | 2   |
| 318       | 7015-318    | Slide Bar                     |                      | 1   |
| 319       | TS-1524051  | Socket Set Screw              | M8x20                | 4   |
| 320       | TS-1492021  | Hex Cap Screw                 | M12x30               | 1   |
| 321       | TS-2361121  | Lock Washer                   | M12                  | 1   |
| 322       | 7015-322    | Drive Shaft Washer            |                      | 1   |
| 323       | 7015-323    | Key                           | 8x8x30L              | 1   |
| 324       | 5516192     | Blade (Standard)              | 1x.035x114.5" - 5/8T | 1   |
|           | 5516191     | Blade                         | 1x.035x114.5" - 4/6T | 1   |
| 325       | 7015-325    | Drive Wheel                   |                      | 1   |
| 326       | TS-1505021  | Socket Head Cap Screw         | M10x20               | 3   |
| 327       | TS-1551071  | Lock Washer                   | M10                  | 3   |
| 328       | J-7015-328  | Gear Box Assembly             | 1:30 8mm             | 1   |
| 329       | TS-1540071  | Hex Nut                       | M10                  | 2   |
| 330       | 7015-330    | Shaft                         |                      | 1   |
| 330-1     | 7015-330-1  | Knurled Disc                  |                      | 1   |
| 331       | TS-1540081  | Hex Nut                       | M12                  | 1   |
| 332       | TS-1505101  | Socket Head Cap Screw         | M10x60               | 1   |
| 333       | 7015-333    | Motor Adjusting Screw         |                      | 1   |
| 334       | 7015-334    | Motor Mount Plate             |                      | 1   |
| 335       | 7015-335    | Motor Mount Plate Bracket     |                      | 2   |
| 336       | TS-1550041  | Flat Washer                   | M6                   | 4   |
| 337       | TS-1503051  | Socket Head Cap Screw         | M6x20                | 4   |
| 338       | J-7015-338  | Motor                         | 1.5HP, 115/230V, 1PH | 1   |
| 339       | 7015-339    | Key                           | 6x6x35L              | 1   |
| 340       | TS-1550061  | Flat Washer                   | M8                   | 4   |
| 341       | TS-1490021  | Hex Cap Screw                 | M8x16                | 4   |
| 342       | TS-1482011  | Hex Cap Screw                 | M6x10                | 3   |
| 343       | TS-1550041  | Flat Washer                   | M6                   | 3   |
| 345S      | J-7015-345S | Pulley Guard & Cover Assembly |                      | 1   |
| 345-1     | 7015-345-1  | Knob                          |                      | 1   |
| 345-2     | TS-1550041  | Flat Washer                   | M6                   | 1   |
| 345-3     | 7015-345-3  | Bracket                       |                      | 1   |
| 345-4     | TS-1482011  | Hex Cap Screw                 | M6x10                | 1   |
| 348       | 7015-348    | Gearbox Pulley                |                      | 1   |
| 349       | TS-1524021  | Socket Set Screw              | M8x10                | 2   |
| 350       | VB-A32      | Belt                          | A-32                 | 1   |
| 351       | 7015-351    | Motor Pulley                  |                      | 1   |
| 352       | TS-1524021  | Socket Set Screw              | M8x10                | 2   |
| 353       | 7015-353    | Speed Chart Label             |                      | 1   |
| 354-1     | 7015-354-1  | Hose Clamp                    | ø12                  | 2   |
| 354-2     | 7015-354-2  | Straight Connector            | PT1/4"x1/4"          | 1   |
| 354-3     | 7015-354-3  | Elbow                         | PT1/4"x1/4"          | 1   |
| 354-4     | 7015-354-4  | Hose Clamp                    | ø19                  | 2   |
| 354-5     | 7015-354-5  | Hose                          | ID1/4"x2.2tx80cm     | 1   |
| 354-6     | 7015-354-6  | 3 Way Coolant Block           |                      | 1   |
| 354-7     | 7015-354-2  | Straight Connector            | PT1/4"x1/4"          | 1   |

## Saw Head

| Index No. | Part No.    | Description              | Size              | Qty |
|-----------|-------------|--------------------------|-------------------|-----|
| 354-8     | TS-1503071  | Socket Head Cap Screw    | M6x30             | 2   |
| 354-9     | 7015-354-9  | Hose                     | ID1/4"x2.2tx143cm | 1   |
| 354-10    | 7015-354-10 | Hose                     | ID1/4"x2.2tx32cm  | 1   |
| 355       | 7015-355    | Hub                      |                   | 1   |
| 355-1     | 7015-355-1  | Blade Tension Handle     |                   | 2   |
| 356       | BB-51203    | Thrust Bearing           | 51203             | 1   |
| 357       | 7015-357    | Tension Indicator        |                   | 1   |
| 358       | 7015-358    | Lock Washer, Tension     | ID16.3x31.5x1.8t  | 10  |
| 359       | 7015-359    | Tension Shaft            |                   | 1   |
| 360       | J-7015-360  | Tension Slide Base       |                   | 1   |
| 360-1     | 7015-360-1  | Tension Scale            |                   | 1   |
| 361       | TS-1523051  | Socket Set Screw         | M6x16             | 1   |
| 362       | J-7015-362  | Tension Slide Block      |                   | 1   |
| 363       | TS-154010   | Hex Nut                  | M16               | 1   |
| 364       | 7015-364    | Washer                   |                   | 1   |
| 365       | TS-1490031  | Hex Cap Screw            | M8x20             | 1   |
| 366       | 7015-366    | Screw                    |                   | 3   |
| 367       | TS-2361101  | Lock Washer              | M10               | 3   |
| 368       | TS-1491101  | Hex Cap Screw            | M10x60            | 3   |
| 369       | 7015-369    | Plate                    |                   | 2   |
| 370       | TS-2361081  | Lock Washer              | M8                | 4   |
| 371       | TS-1490011  | Hex Cap Screw            | M8x12             | 4   |
| 372       | TS-2246122  | Button Head Socket Screw | M6x12             | 2   |
| 373       | TS-0680021  | Flat Washer              | 1/4"              | 2   |
| 374       | J-7015-374  | Control Box              |                   | 1   |
| 375       | TS-2286121  | Flat Head Machine Screw  | M6x12             | 2   |
| 376       | 7015-376    | Control Box Front Panel  | 5 Hole            | 1   |
| 377       | TS-1533032  | Pan Head Machine Screw   | M5x8              | 8   |

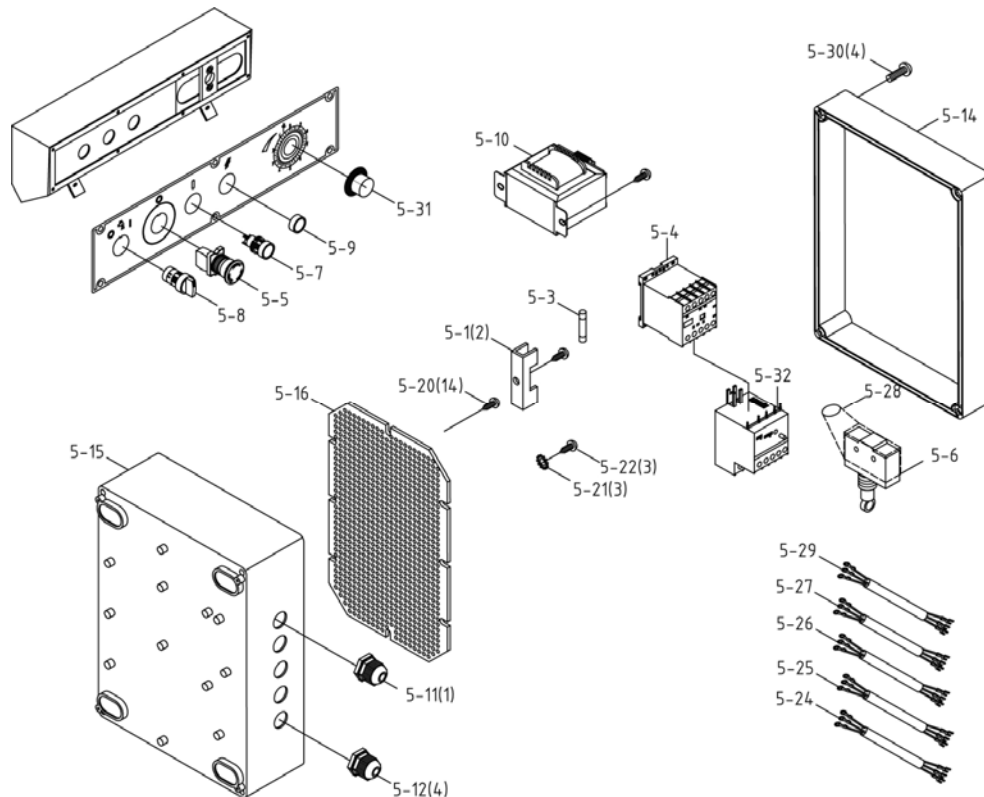
# Saw Head – Parts Breakdown



JET-813-060320-B-R1

## Electric Assembly – Parts and Breakdown

| Index No. | Part No.   | Description  | Size            | Qty |
|-----------|------------|--|-----------------|-----|
| 5-1       | 7015-5-1A  | Fuse Base ( <i>serial no12040936 and higher</i> )      | VLC10           | 2   |
| 5-3       | 7015-5-3A  | Fuse ( <i>serial no12040936 and higher</i> )           | KTK-2A          | 1   |
| 5-4       | 7015-5-4   | Magnetic Contactor                                     | SDE MA-15       | 1   |
| 5-5       | 7015-5-5   | Emergency Stop Switch                                  | HY-57B          | 1   |
| 5-6       | 7015-5-6A  | Limit Switch ( <i>serial no12040936 and higher</i> )   | CSA/CUS         | 1   |
| 5-7       | 7015-5-7   | Flat Switch (Start)                                    | XB7-EA311AG     | 1   |
| 5-8       | 7015-5-8   | Selector Switch (Coolant Pump)                         | XB7-ED21        | 1   |
| 5-9       | 7015-5-9   | Indicator Light (Power)                                | XB7-EV64        | 1   |
| 5-10      | 7015-5-10  | Transformer  | CE 30W 110/220V | 1   |
| 5-11      | 7015-5-11  | Cable Setting Nut                                      | PG-11           | 4   |
| 5-12      | 7015-5-12  | Cable Setting Nut                                      | PG-13.5         | 1   |
| 5-14      | 7015-5-14  | Electrical Control Box Cover                           |                 | 1   |
| 5-15      | 7015-5-15  | Electrical Control Box                                 |                 | 1   |
| 5-16      | 7015-5-16  | Net Plate  |                 | 1   |
| 5-20      | 7015-5-20  | Screw, Tapping   | M4x8L           | 14  |
| 5-21      | TS-1550031 | Washer   | M5              | 3   |
| 5-22      | TS-1533032 | Pan Head Machine Screw                                 | M5x10           | 3   |
| 5-24      | 7015-5-24  | Motor Cable  | 14*3C           | 1   |
| 5-25      | 7015-5-25  | Power Cable  | 14*3C           | 1   |
| 5-26      | 7015-5-26  | Limit Cable  | VDE0.75*2C      | 1   |
| 5-27      | 7015-5-27  | Pump Cable   |                 | 1   |
| 5-28      | 7015-5-28  | Limit Switch Cover                                     | CB2             | 1   |
| 5-29      | 7015-5-29  | Control Wire   | 0.75 x 6C       | 1   |
| 5-30      | TS-1533032 | Pan Head Machine Screw                                 | M5x10           | 4   |
| 5-31      | 7015-5-31  | Feed Rate Control Knob                                 |                 | 1   |
| 5-32      | 7015-5-32  | Overload Relay ( <i>serial no12040936 and higher</i> ) | RHU-10K1        | 1   |





# Wiring Diagram

