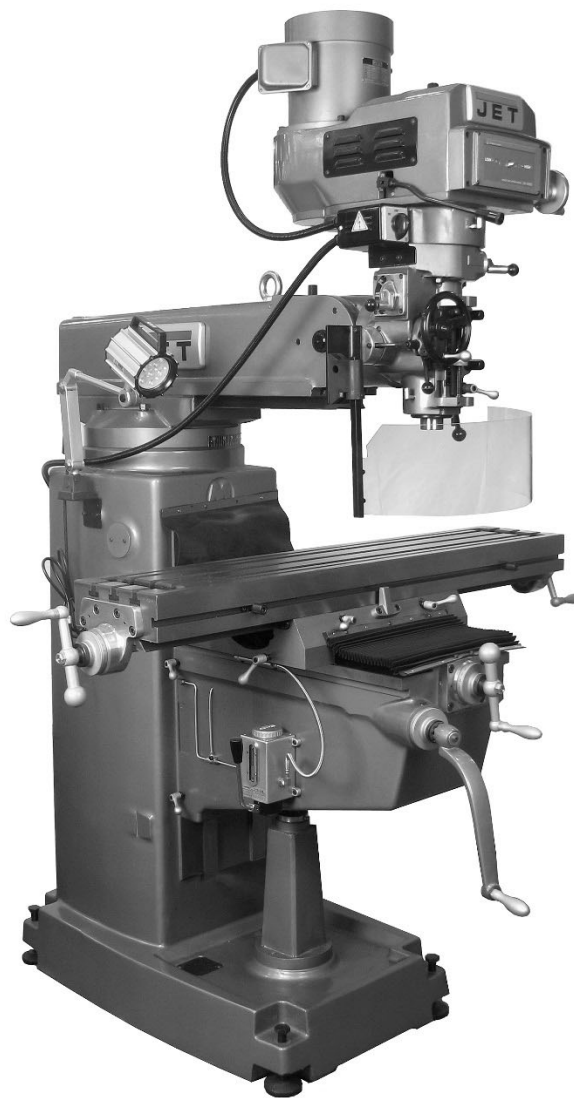




Operating Instructions and Parts Manual Variable Speed Turret Mill

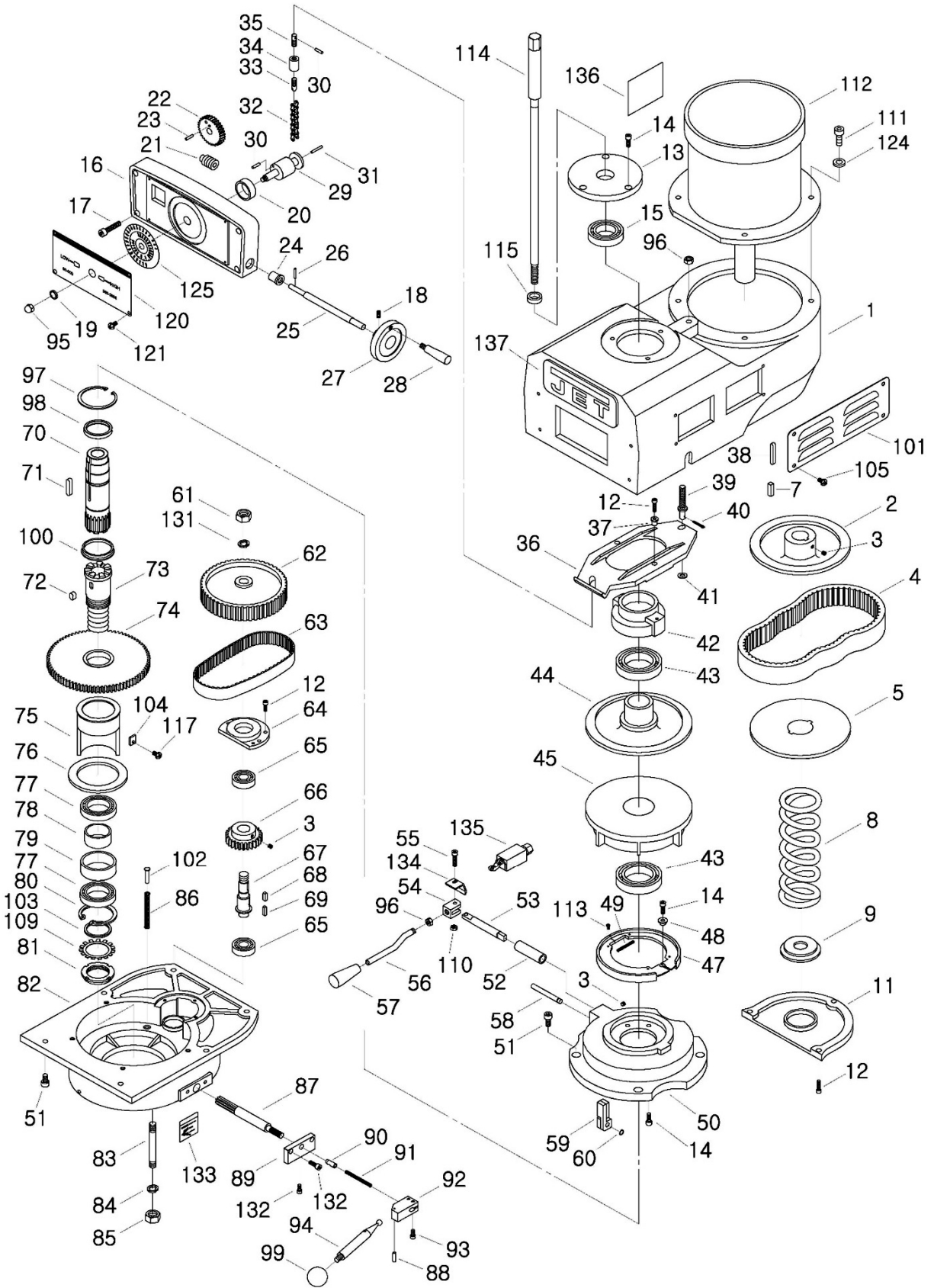
Model JTM-1050VS2



JET
427 New Sanford Road
LaVergne, Tennessee 37086
Ph.: 800-274-6848
www.jettools.com

M-691050
Edition 2 11/2019
Copyright © 2018 JET

13.1.1 JTM-1050VS2 Upper Head Assembly – Exploded View



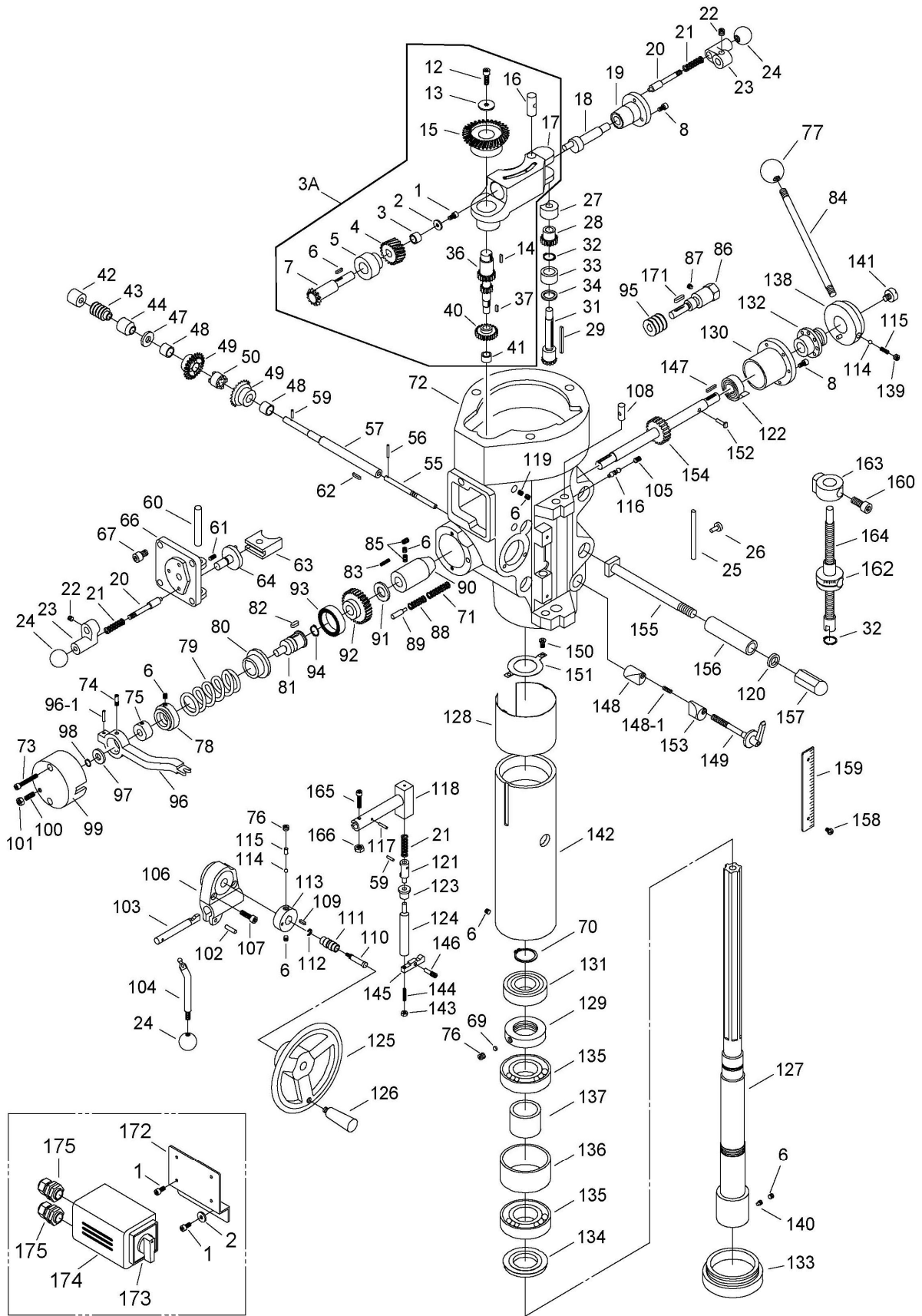
13.1.2 JTM-1050VS2 Upper Head Assembly – Parts List

Index No	Part No	Description	Size	Qty
1	JTM949EVS-A77	Upper Guard		1
2	JTM1254RVS-A02	Motor Disc – Upper		1
3	TS-1523011	Socket Set Screw	M6x6L	3
4	JTM1254RVS-A04	Belt	3828 -875L	1
5	JTM1254RVS-A05	Motor Disc – Lower		1
7	6295247	Key	7x7x25L mm	1
8	JTM1254RVS-A08	Spring		1
9	JTM1254RVS-A09	Washer		1
11	JTM949EVS-A69	Motor Pulley Cover		1
12	TS-1504041	Hex Socket Cap Screw	M8x20L	10
13	JTM1254RVS-A13	Upper Cover		1
14	TS-1502041	Hex Socket Cap Screw	M5x16L	10
15	BB-6009ZZ	Ball Bearing	6009ZZ	1
16	JTM1254RVS-A16	Dial Housing		1
17	TS-1503071	Hex Socket Cap Screw	M6x30L	4
18	TS-1523051	Socket Set Screw	M6x16L	2
19	JTM1254RVS-A19	Bushing		1
20	JTM1254RVS-A20	Spacer		1
21	JTM1254RVS-A21	Worm Gear Shaft		1
22	JTM1254RVS-A22	Worm Gear		1
23	5301041	Spring Pin	5x10L mm	2
24	JTM1254VS-A24	Bushing		2
25	JTM1254VS-A25	Shaft		1
26	5302611	Spring Pin	3x12L mm	1
27	JTM1254RVS-A27	Handwheel		1
	JTM1254RVS-A27A	Handwheel Assembly (includes #18,27,28)		1
28	JTM1254RVS-A28	Handle		1
29	JTM1254RVS-A29	Chain axle		1
30	5509313	Spring Pin	4x16L mm	2
31	GA7X-865	Spring Pin	3x25L mm	1
32	JTM1254RVS-A32	Chain		1
33	JTM1254RVS-A33	Screw		1
34	JTM1254RVS-A34	Spacer		1
35	JTM1254RVS-A35	Pin		1
36	JTM1254RVS-A36	Adjustable Plate		1
37	JTM1254RVS-A37	Shift Sleeve		2
38	6294761	Key	6x6x45L mm	1
39	JTM1254RVS-A39	Bottom Pin		1
40	5307431	Spring Pin	3/32"x3/4"	1
41	TS-1550061	Flat Washer	Ø8 mm	1
42	JTM1254RVS-A42	Bearing Housing		1
43	BB-6010ZZ	Ball Bearing	6010ZZ	2
44	JTM1254RVS-A44	Spindle Disc – Upper		1
45	JTM1254RVS-A45	Spindle Disc – Lower		1
47	JTM949EVS-A48	Brake Shoe		1
48	JTM949EVS-A58	Lock Collar		1
49	JTM949EVS-A62	Brake Spring		2
50	JTM949EVS-A43	Brake Base		1
51	TS-1504041	Hex Socket Cap Screw	M8x20L	10
52	JTM949EVS-A53	Brake Sleeve		1
53	JTM949EVS-A54	Spindle Brake Shaft		1
54	JTM949EVS-A56	Spindle Brake Lever Pivot		1
55	TS-1503071	Hex Socket Cap Screw	M6x30L	1
56	JTM949EVS-A63	Spindle Brake Lever		1
57	JTM949EVS-A50	Brake Lock Knob	3/8"	1
58	JTM949EVS-A49	Brake Shaft		1
59	JTM949EVS-A47	Brake Finger Stud (set of 2)		1
60	JTM949EVS-A46	Retaining Ring	STW8	1
61	TS-0581072	Hex Nut	5/8-18UNF	1
62	JTM949EVS-A34	Timing Pulley		1

Index No	Part No	Description	Size	Qty
63	JTM949EVS-A32	Timing Belt	225L100	1
64	JTM949EVS-A19	Ball Bearing Bracket		1
65	BB-6203ZZ	Ball Bearing	6203ZZ	2
66	JTM949EVS-A18	Gear		1
67	JTM949EVS-A16	Gear Shaft		1
68	KF2R5515	Double Round Key	5x5x15L mm	1
69	KF2R5518	Double Round Key	5x5x18L mm	1
70	JTM949EVS-A41	Input Clutch		1
71	5307741	Key	8x7x24L mm	1
72	KF2R8712	Key	8x7x12L mm	1
73	JTM949EVS-A38	Output Clutch		1
74	JTM949EVS-A33	Gear		1
75	JTM949EVS-A31	Bearing Sleeve		1
76	JTM949EVS-A30	Washer		1
77	BB-6908ZZ	Ball Bearing	6908ZZ	2
78	JTM949EVS-A29	Gear Bearing Spacer (Small)		1
79	JTM949EVS-A28	Gear Bearing Spacer (Large)		1
79A	JTM949EVS-A28A	Gear Bearing Spacer Assembly (#78,79)		1
80	RTW62	Retaining Ring	RTW62	1
81	AN08	Bearing Nut	AN08	1
82	JTM949EVS-A01	Upper Pulley Housing		1
83	JTM949EVS-A88	Stud	7/16"x4"	3
84	TS-0720101	Spring Washer	7/16"	3
85	TS-0561041	Hex Nut	7/16"-14	3
86	JTM949EVS-A21	Pressure Spring		3
87	JTM949EVS-A03	Bull Gear Shifter Pinion Shaft		1
88	B-56	Spring Pin	3x20L mm	1
89	JTM949EVS-A04	Hi-Lo Detent Plate		1
90	JTM949EVS-A05	Sleeve		1
91	JTM949EVS-A06	Spring		1
92	JTM949EVS-A08	Hi-Lo Pinion Block		1
93	TS-1502031	Hex Socket Cap Screw	M5x12L	2
94	JTM949EVS-A09	Hi-Lo Shift Handle		1
95	F004478	Cap Nut	5/16"-18UNC	1
96	TS-0570031	Hex Nut	3/8"-16UNC	2
97	F006094	C-Retaining Ring, Int	RTW80	1
98	JTM949EVS-A59	Collar		1
99	BH1/4	Black Plastic Ball	1/4"	1
100	JTM949EVS-A39	Clutch Collar		1
101	JTM949EVS-A75	Side Belt Housing Cover		2
102	JTM949EVS-A22	Spring Shaft		3
103	JTM949EVS-A25	Spacer		1
104	JTM1254RVS-A104	Nut		1
105	F009884	Socket Head Button Screw	M5x8L	8
109	AW08	Bearing Washer	AW08	1
110	TS-1540041	Hex Nut	M6	1
111	TS-0209061	Hex Socket Cap Screw	3/8"-16x1-1/4L	4
112	JTM1050VS2-A112	Motor	.3HP 230/ 460V 4P 3Ph	1
	JTM1050VS2-A112-1	Motor Fan (not shown)		1
	JTM1050VS2-A112-2	Motor Fan Cover (not shown)		1
	JTM1050VS2-A112-3	Junction Box Cover (not shown)		1
113	JTM949EVS-A51	Pan Head Screw	1/8"x1/4"	4
114	JTM949EVS-A87	Draw Bar	7/16"	1
115	JTM949EVS-A86	Spacer		1
117	F000233	Phillips Pan Hd Machine Screw	#10-24x1/2"L	1
120	JTM1050VS2-A120	Speed Plate	60-4200 RPM	1
121	TS-2244202	Socket Head Button Screw	M4x20L	4
124	TS-1550071	Flat Washer	M10	4
125	JTM1050VS2-A125	Speed Dial	60-4200 RPM	1
131	TS-0720131	Spring Washer	5/8"	1
132	TS-1502041	Hex Socket Cap Screw	M5x16L	3
133	JTM1050VS2-A133	Speed Range Label	60-4200 RPM	1

Index No	Part No	Description	Size	Qty
134	JTM949EVS-A91	Push Plate		1
135	JTM949EVS-A92	Limit Switch		1
136	JTM1050VS2-A136	Motor Label		1
137	JET-165	JET Logo	165 x 68 mm	1

13.2.1 JTM-1050VS2 Lower Head Assembly – Exploded View



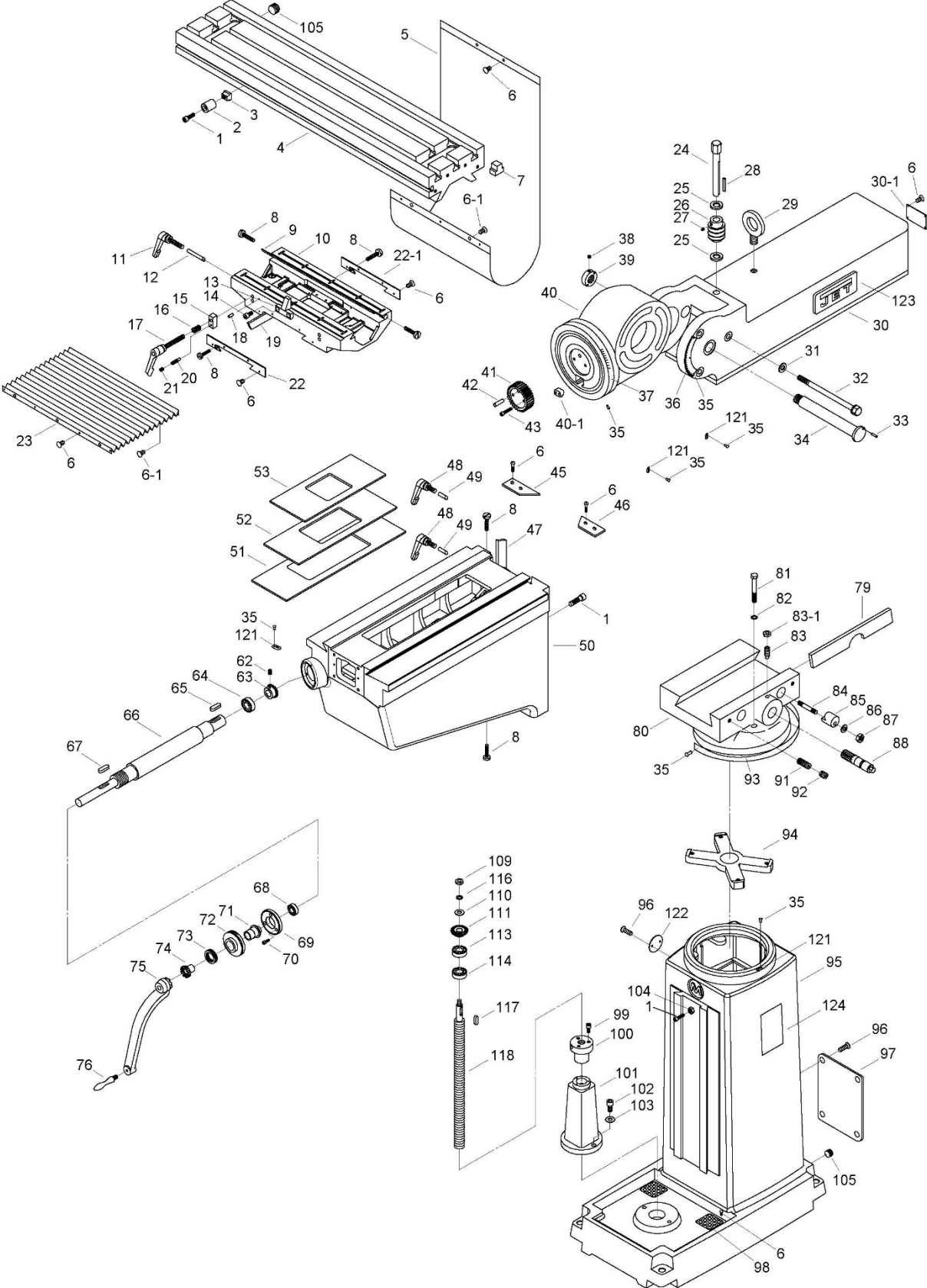
13.2.2 JTM-1050VS2 Lower Head Assembly – Parts List

Index No	Part No	Description	Size	Qty
1	TS-1503031	Hex Socket Cap Screw	M6x12L	1
2	TS-1550041	Flat Washer	Ø6xØ16x2t	1
3	JTM949EVS-B07	Worm Gear Spacer		1
3A	JTM949EVS-B03A	Feed Gear Assembly (includes #1-7,12-17,36-37and 40-41)		1
4	JTM949EVS-B08	Feed Drive Worm Gear		1
5	JTM949EVS-B05	Worm Cradle Bushing		1
6	KF2R3312	Key	3x3x12L	1
7	JTM949EVS-B06	Feed Gear Shaft		1
8	TS-1502031	Hex Socket Cap Screw	M5x12	6
12	TS-1503041	Hex Socket Cap Screw	M6x16L	1
13	JTM949EVS-B13	Flat Washer	Ø6	1
14	KF2R5508	Key	5x5x8L	1
15	JTM949EVS-B15	Feed Reverse Bevel Gear		1
16	JTM949EVS-B16	Feed Engage Pin		1
17	JTM949EVS-B17	Worm Gear Cradle		1
18	JTM949EVS-B18	Cam Rod		1
19	JTM949EVS-B19	Shift Sleeve		1
20	JTM949EVS-B20	Lock Rod		2
21	JTM949EVS-B21	Spring		3
22	5302731	Socket Set Screw	M8x6L	2
23	JTM949EVS-B23	Crank		2
24	BH1/4	Black Plastic Ball	1/4"	3
25	JTM949EVS-B25	Indicator Rod		1
26	JTM949EVS-B26	Indicator Rod Screw		1
27	JTM949EVS-B27	Upper Bushing		1
28	JTM949EVS-B28	Cluster Gear		1
29	KF2R3345	Key	3x3x45L mm	1
31	JTM949EVS-B31	Bevel Gear Shaft		1
32	STW16	Retaining Ring	STW16	2
33	JTM949EVS-B33	Bevel Gear Bushing		1
34	JTM949EVS-B34	Spacer		1
36	JTM949EVS-B36	Feed Drive Gear		1
36A	JTM949EVS-B36A	Feed Drive Gear Assembly (#36,37)		1
37	KF2R3308	Key	3x3x8L mm	1
40	JTM949EVS-B40	Feed Drive Gear		1
41	BB-BA78Z	Needle Bearing	BA78Z	1
42	JTM949EVS-B42	Bushing		1
43	JTM949EVS-B43	Worm		1
44	JTM949EVS-B44	Feed Worm Shaft Bushing		1
47	JTM949EVS-B47	Bevel Gear Thrust Spacer		1
48	JTM949EVS-B48	Bushing		2
49	JTM949EVS-B49	Feed Reverse Bevel Gear		2
50	JTM949EVS-B50	Feed Reverse Clutch		1
55	JTM949EVS-B55	Reverse Clutch Rod		1
56	TS-209203	Spring Pin	Ø3x20L mm	1
57	JTM949EVS-B57	Feed Worm Shaft		1
59	5302611	Spring Pin	3x12 mm	2
60	JTM949EVS-B60	Feed Shift Rod		1
61	TS-1522031	Socket Set Screw	M5x10	1
62	KF2R3315	Key	3x3x15 mm	1
63	JTM949EVS-B63	Feed Gear Shift Fork		1
64	JTM949EVS-B64	Cluster Gear Shift Crank		1
66	JTM949EVS-B66	Cluster Gear Cover		1
67	TS-1502031	Hex Socket Cap Screw	M5x12L	4
69	JTM949EVS-B69	Lock Block		1
70	2210-266	Retaining Ring	STW30	1
71	JTM949EVS-B71	Spring	10x20L mm	1
72	JTM949EVS-B72	Quill Housing	85mm	1
73	TS-1502081	Hex Socket Cap Screw	M5x35L	2
74	JTM949EVS-B74	Clutch Ring Pin		2

Index No	Part No	Description	Size	Qty
75	JTM949EVS-B75	Clutch Ring		1
76	5302731	Socket Set Screw	M8x6L	2
77	JTM949EVS-B77	Handle		1
78	JTM949EVS-B78	Overload Clutch Lockout		1
79	JTM949EVS-B79	Safety Clutch Spring		1
80	JTM949EVS-B80	Overload Clutch		1
80A	JTM949EVS-B80A	Overload Clutch Assembly (#78,80,81)		1
81	JTM949EVS-B81	Overload Clutch Sleeve		1
82	KF2R5516	Key	5x5x16L	1
83	TS-1532052	Pan Head Machine Screw	M4x16L	3
84	JTM949EVS-B84	Handle		1
85	TS-1523031	Socket Set Screw	M6x10L	2
86	JTM949EVS-B86	Worm Shaft		1
87	TS-1523011	Set Screw	M6X6L	1
88	JTM949EVS-B88	Spring		1
89	JTM949EVS-B89	Spring Plunger		1
90	JTM949EVS-B90	Pinion Shaft		1
91	JTM949EVS-B91	Spacer		1
92	JTM949EVS-B92	Overload Clutch Worm Gear		1
93	JTM949EVS-B93	Overload Clutch Ring		1
94	STW22	Retaining Ring	STW22	1
95	JTM949EVS-B95	Worm Gear		1
96	JTM949EVS-B96	Trip Lever		1
96-1	GA7X-122	Spring Pin	Ø5x20L mm	1
97	JTM949EVS-B97	Washer		1
98	STW10	Retaining Ring	STW10	1
99	JTM949EVS-B99	Clutch Arm Cover		1
100	TS-1523051	Socket Set Screw	M6x16L	1
101	TS-2311061	Hex Nut	M6	1
102	5625391	Spring Pin	Ø5x16L mm	1
103	JTM949EVS-B103	Cam Rod		1
104	JTM949EVS-B104	Trip Handle		1
105	5302731	Socket Set Screw	M8x6L	1
106	JTM949EVS-B106	Feed Trip Bracket		1
107	TS-1503051	Hex Socket Cap Screw	M6x20L	2
108	JTM949EVS-B108	Plunger		1
109	KF2R3312	Key	3x3x12L	1
110	JTM949EVS-B110	Feed Reverse Stud Bolt		1
110A	JTM949EVS-B110A	Feed Reverse Stud Assembly (#110,111,112)		1
111	JTM949EVS-B111	Feed Reverse Stud		1
112	ETW6	Retaining Ring	ETW6	1
113	JTM949EVS-B113	Handwheel Clutch		1
114	SB-3/16	Steel Ball	3/16"	2
115	JTM949EVS-B115	Spring		2
116	JTM949EVS-B116	Lever		1
117	JTM949EVS-B117	Spring Pin	Ø3X16L mm	1
118	JTM949EVS-B118	Cam Rod Sleeve Assembly		1
119	TS-1523011	Socket Set Screw	M6x6L	2
120	JTM949EVS-B120	Flat Washer	M13	4
121	JTM949EVS-B121	Trip Plunger		1
122	JTM949EVS-B122	Adjustable Spring		1
123	JTM949EVS-B123	Bushing		1
124	JTM949EVS-B124	Feed Trip Plunger		1
125	JTM949EVS-B125	Handwheel		1
125A	JTM949EVS-B125A	Handwheel Assembly (#125,126)		1
126	JTM949EVS-B126	Handle		1
127	JTM949EVS-B127	Spindle	R8	1
128	JTM949EVS-B128	Quill Skirt		1
129	JTM949EVS-B129	Lock Nut	M35	1
130	JTM949EVS-B130	Spring Cover		1
131	BB-6206ZZ	Ball Bearing	6206ZZ	1
132	JTM949EVS-B132	Hub Sleeve		1

Index No	Part No	Description	Size	Qty
133	JTM949EVS-B133	Nose Piece		1
134	JTM949EVS-B134	Spindle Shield		1
135	BB-7207C	Ball Bearing	7207C	2
136	JTM949EVS-B136	Bearing Spacer (large)		1
136A	JTM949EVS-B136A	Bearing Spacer Assembly (#136,137)		1
137	JTM949EVS-B137	Bearing Spacer (small)		1
138	JTM949EVS-B138	Hub		1
139	TS-0270011	Socket Set Screw	5/16"-18x1/4"	1
140	TS-1523011	Socket Set Screw	M6x6	1
141	JTM949EVS-B141	Pinion Shaft Hub		1
142	JTM949EVS-B142	Quill		1
143	TS-1540021	Hex Nut	M4	1
144	TS-1521071	Socket Set Screw	M4x20L	1
145	JTM949EVS-B145	Feed Trip Lever		1
146	JTM949EVS-B146	Trip Lever Pin		1
147	KF2R5525	Key	5x5x25L	1
148	JTM949EVS-B148	Quill Lock Sleeve		1
148-1	JTM949EVS-B148-1	Spring		1
149	JTM949EVS-B149	Lock Handle	M8x80L	1
150	TS-1533032	Pan Head Screw	M5x10L	2
151	JTM949EVS-B151	Washer		1
152	JTM949EVS-B152	T-type Pin		1
153	JTM949EVS-B153	Quill Lock Sleeve		1
154	JTM949EVS-B154	Quill Pinion Shaft		1
154A	JTM949EVS-B154A	Quill Pinion Shaft Assembly (#152,154)		1
155	JTM949EVS-B155	T-Bolt Assembly		4
156	JTM949EVS-B156	Spacer		4
157	JTM949EVS-B157	Lock Nut		4
158	TS-2171012	Pan Head Screw	M4x6L	2
159	JTM949EVS-B159	Micrometer Scale		1
160	TS-0209032	Hex Socket Cap Screw	3/8"-24UNFx3/4"	1
162	JTM949EVS-B162	Micrometer Nut		1
163	JTM949EVS-B163	Quill Stop Knob		1
164	JTM949EVS-B164	Quill Micro-Screw		1
165	TS-1502051	Hex Socket Cap Screw	M5x20L	1
166	TS-1540031	Hex Nut	M5	1
171	KF2R4418	Key	4x4x18L mm	1
172	JTM1050VS2-B172	Bracket		1
173	JTM1050VS2-B173	Reversible Switch		1
174	JTM1050VS2-B174	Switch Housing		1
175	JTM1050VS2-B175	Cable Gland	PG-13.5	2

13.3.1 JTM-1050VS2 Column and Base Assembly – Exploded View

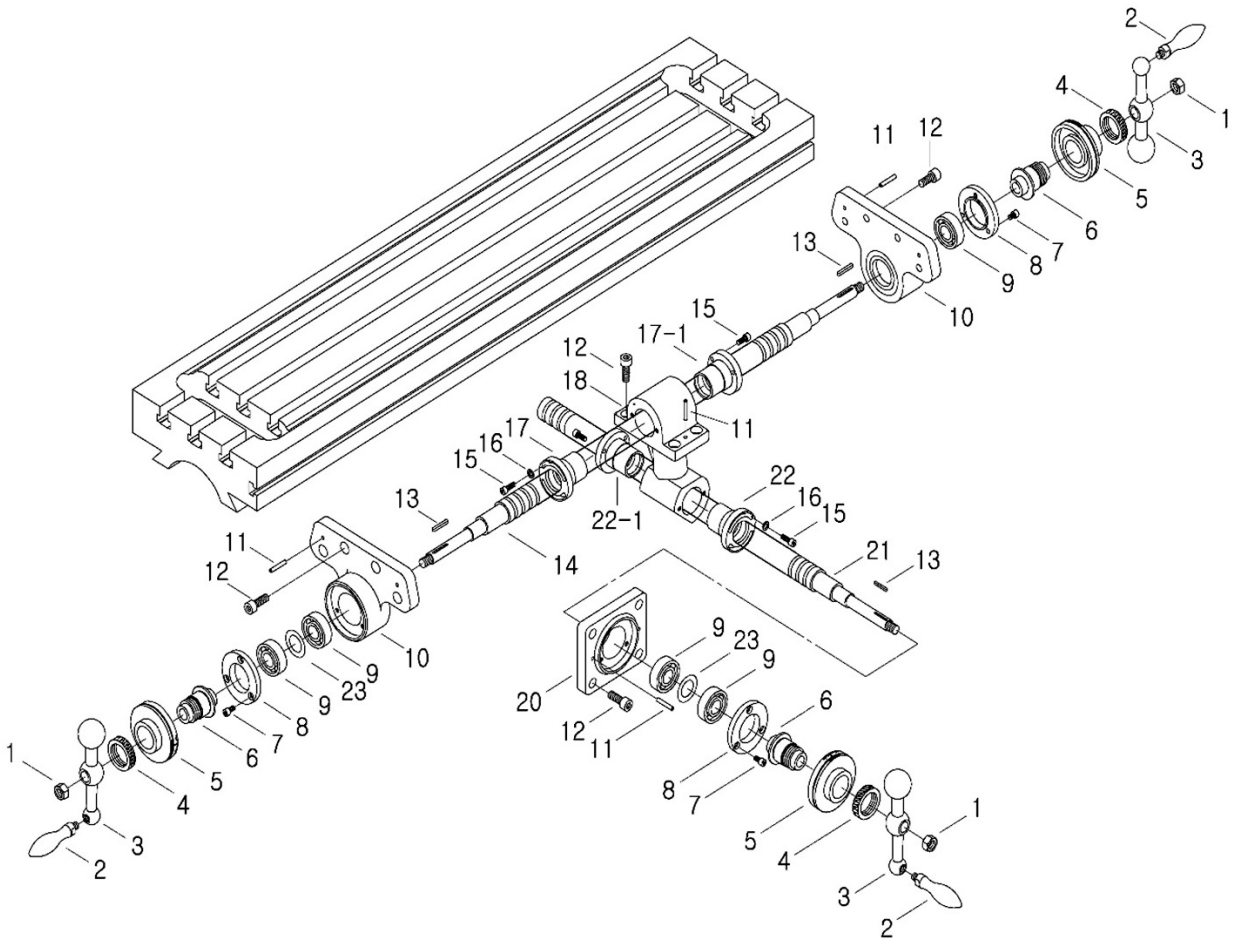


13.3.2 JTM-1050VS2 Column and Base Assembly – Parts List

Index No	Part No	Description	Size	Qty
1	TS-2249252	Socket Head Button Screw	M10x25L	4
2	JTM949EVS-C31	Bushing		2
3	JTM949EVS-C30	Nut		2
4	JTM1050EVS2-C04	Table	10"x50"	1
5	JTM1050EVS2-C05	Flat Way Cover		1
6	TS-2245102	Socket Head Button Screw	M5x10L	24
6-1	TS-2245162	Socket Head Button Screw	M5x16L	4
7	JTM1050EVS2-C07	T Rubber	16x32mm	6
8	JTM949EVS-C34	Adjust Screw	M8x37L	6
9	JTM1050EVS2-C09	Table Gib		1
10	JTM1050EVS2-C10	Saddle		1
11	JTM1050EVS2-11	Handle	M12x50L	1
12	JTM1050EVS2-C12	Lock Pin		1
13	JTM1050EVS2-C13	Limiter		1
14	TS-1504041	Hex Socket Cap Screw	M8x20L	2
15	JTM1050EVS2-C15	Locker		2
16	JTM1050EVS2-16	Spring		2
17	JTM1050EVS2-17	Handle	M12x103L	2
18	JTM1050EVS2-18	Pin		2
19	JTM1050EVS2-19	Saddle Knee Gib		1
20	JTM1050EVS2-20	Lock Screw		2
21	TS-1524031	Socket Set Screw	M8x12L	2
22	JTM1050EVS2-22	Front Wiper		1
22-1	JTM1050EVS2-22-1	Rear Wiper		1
23	JTM1050EVS2-23	Pleated Way Cover		1
24	JTM1050EVS2-24	Shaft		1
25	JTM1050EVS2-25	Washer		2
26	JTM949EVS-C07	Worm	Ø44.4x17.4x50.7L	1
27	TS-1523021	Socket Set Screw	M6x8L	1
28	KEY5550	Key	5x5x50L mm	1
29	JTM1050EVS2-C29A	Lifting Ring	M20	1
30	JTM1050EVS2-30	Ram		1
30-1	JTM1050EVS2-30-1	Plate		1
31	JTM1050EVS2-30-1	Plate		1
32	JTM1050EVS2-32	Adapter Locking Bolt	M14x203L	3
33	6293347	Spring Pin	Ø3x16L mm	1
34	JTM1050EVS2-34	Adapter Shaft	Ø30x200L mm	1
35	RN2L6	Rivet	Ø2x6L mm	12
36	JTM949EVS-C12	Angle Scale		1
37	JTM949EVS-C06	Adapter Scale		1
38	TS-1521031	Set Screw	M4x8L	1
39	JTM1050EVS2-39	Lock Nut	Ø45x13L	1
40	JTM1050EVS2-C40	Ram Adapter	Ø30 mm	1
40-1	JTM949EVS-C03-1	Lock Stud		1
41	JTM949EVS-C02	Worm Gear		1
42	AB1012W-A83	Spring Pin	Ø6x30L mm	1
43	TS-1504061	Hex Socket Cap Screw	M8x30L	2
45	JTM1050EVS2-45	Knee Wiper (Left)		1
46	JTM1050EVS2-46	Knee Wiper (Right)		1
47	JTM1050EVS2-47	Gib		1
48	JTM949EVS-C21	Lock Handle Assembly	M12x25L	5
49	JTM1050EVS2-49	Lock Pin	Ø10*37L*50° mm	2
50	JTM1050EVS2-50	Knee		1
51	JTM949EVS-C48	Chip Guard (Bottom)	580MM L	1
52	JTM949EVS-C49	Chip Guard (Middle)	470MM L	1
53	JTM949EVS-C41	Chip Guard (Top)	360MM L	1
62	TS-1523021	Socket Set Screw	M6x8L	2
63	JTM949EVS-C74	Bevel Gear	18T	1
64	BB-6004ZZ	Bearing	6004ZZ	1
65	KF2R4418	Key	4x4x18L mm	1
66	JTM1050EVS2-66	Elevating Shaft		1
67	KF2R4418	Key	4x4x18L mm	1

Index No	Part No	Description	Size	Qty
68	BB-6204ZZ	Bearing	6204ZZ	1
69	JTM949EVS-C68	Housing	DISTANCE 62	1
70	TS-1503041	Hex Socket Cap Screw	M6x16L	3
71	JTM949EVS-C67	Dial Holder	51L	1
72	JTM949EVS-C66	Dial (Inch)	100/0.001"	1
73	JTM949EVS-C65	Dial Lock Nut		1
74	JTM949EVS-C64	Clutch Insert	4mm, 9T	1
75	JTM1050EVS2-75	Elevating Crank		1
76	JTM949EVS-C62	Handle		1
79	JTM1050EVS2-79	Turret Gib		1
80	JTM1050EVS2-80	Turret		1
81	SNH12L150	Hex Cap Screw	M12x150L	4
82	TS-2361121	Spring Washer	Ø13 mm	4
83	TS-2279301	Socket Set Screw	M10x30L	1
83-1	TS-1540071	Hex Nut	M10	1
84	JTM1050EVS2-84	Locking Bolt	M14x110	2
85	JTM1050EVS2-85	Table Lock Piece		2
86	TS-155009	Flat Washer	Ø14 mm	2
87	TS-154009	Hex Nut	M14	2
88	JTM1050EVS2-88	Ram Pinion	M2.54-13T	1
91	JTM1050EVS2-91	Locking Screw	M8x30L	2
92	TS-1524011	Socket Set Screw	M8x8L	2
93	JTM949EVS-C81	Turret Scale		1
94	JTM949EVS-C27	Spider		1
95	JTM949EVS-C28	Column		1
96	TS-2246122	Socket Head Button Screw	M6x12L	6
97	JTM949EVS-C86	Cover		1
98	JTM949EVS-C87	Strainer Net		2
99	TS-1503041	Hex Socket Cap Screw	M6x16L	3
100	JTM949EVS-C53	Lead Screw Nut	Ø32 x 5 TPI	1
101	JTM949EVS-C52	Brass Nut		1
102	TS-1505051	Hex Socket Cap Screw	M10x35L	2
103	TS-2361101	Lock Washer	M10	2
104	TS-1540071	Hex Nut	M10	1
105	SH(PT)1/2B	Oil Plug	1/2"PT	3
109	TS-0561052	Hex Nut	1/2"-20UNF	1
110	TS-155009	Washer	Ø13xØ32x5t mm	1
111	JTM949EVS-C58	Bevel Gear	36T	1
113	BB-6205ZZ	Bearing	6205ZZ	1
114	BB-51305	Thrust Bearing	51305	1
116	TS-0720111	Spring Washer	Ø13 mm	1
117	KF2R5520	Key	5x5x20L mm	1
118	JTM949EVS-C61	Lead Screw (Inch)	Ø32x5TPI (570L)	1
121	JTM1254VS-C91	Pointer		2
122	JTM949EVS-C84	Side Cover		1
123	JET-254	JET Logo	254x105 mm	2
124	LM000357	ID/Warning Label		1
	JTM1050VS2-TB	Tool Box Kit Complete (not shown)		1

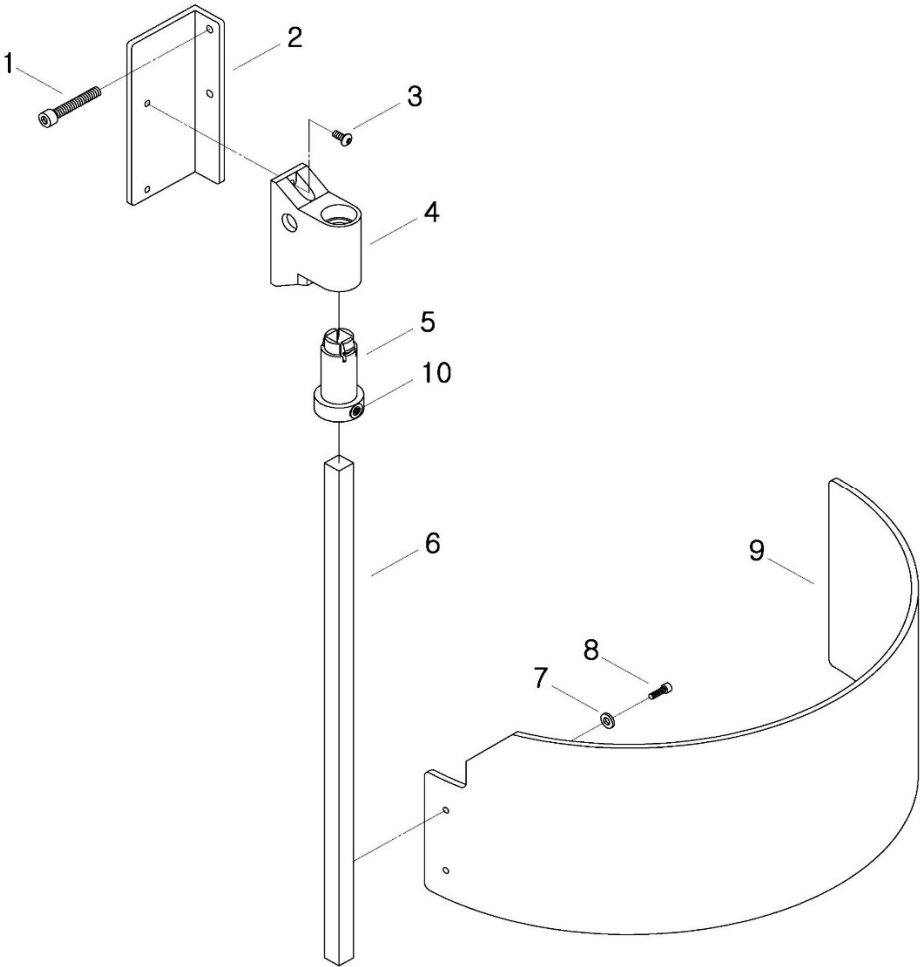
13.4.1 JTM-1050VS2 Table Leadscrew Assembly – Exploded View



13.4.2 JTM-1050VS2 Table Leadscrew Assembly – Parts List

Index No	Part No	Description	Size	Qty
1	TS-0561052	Hex Nut	1/2"-20UNF	3
2	JTM949EVS-D02	Handle	3/8"	3
3	JTM949EVS-D03	Ball Crank		3
4	JTM949EVS-D04	Dial Nut		3
5	JTM949EVS-D05	Dial (Inch)	200/0.001"	3
6	JTM949EVS-D06	Dial Holder		3
7	TS-1503031	Hex Socket Cap Screw	M6x12	9
8	JTM1050VS2-D08	Cover		3
9	BB-6204ZZ	Ball Bearing	6204ZZ	5
10	JTM1050VS2-D10	Bearing Bracket	PCD Ø60	2
11	5311251	Spring Pin	Ø5x30 mm	6
12	TS-1505031	Hex Socket Cap Screw	M10x25	16
13	KF2R3325	Key	3x3x25 mm	3
14	JTM1050EVS2-D14	Longitudinal Feed Screw	Ø32 x 5tpi (1531L)	1
15	TS-1503041	Hex Socket Cap Screw	M6x16	10
16	TS-1550041	Flat Washer	M6	4
17	JTM949EVS-D17	Longitudinal Feed Adjustment Nut (inch)	Ø32 x 5 TPI	1
17-1	JTM949EVS-D17-1	Feed Screw Nut (inch)	Ø32 x 5 TPI	1
18	JTM1050EVS2-D18	Feed Nut Bracket		1
20	JTM1050VS2-D20	Cross Feed Bearing Bracket	PCD Ø60	1
21	JTM1050EVS2-D21	Cross Feed Screw	Ø32 x 5 TPI (720L)	1
22	JTM949EVS-D22	Cross Feed Adjustment Nut (inch)	Ø32 x 5 tpi	1
22-1	JTM949EVS-D22-1	Cross Feed Nut (inch)	Ø32 x 5 tpi	1
23	JTM949EVS-D23	Adjusting Washer	Ø45xØ34x0.075t mm	2

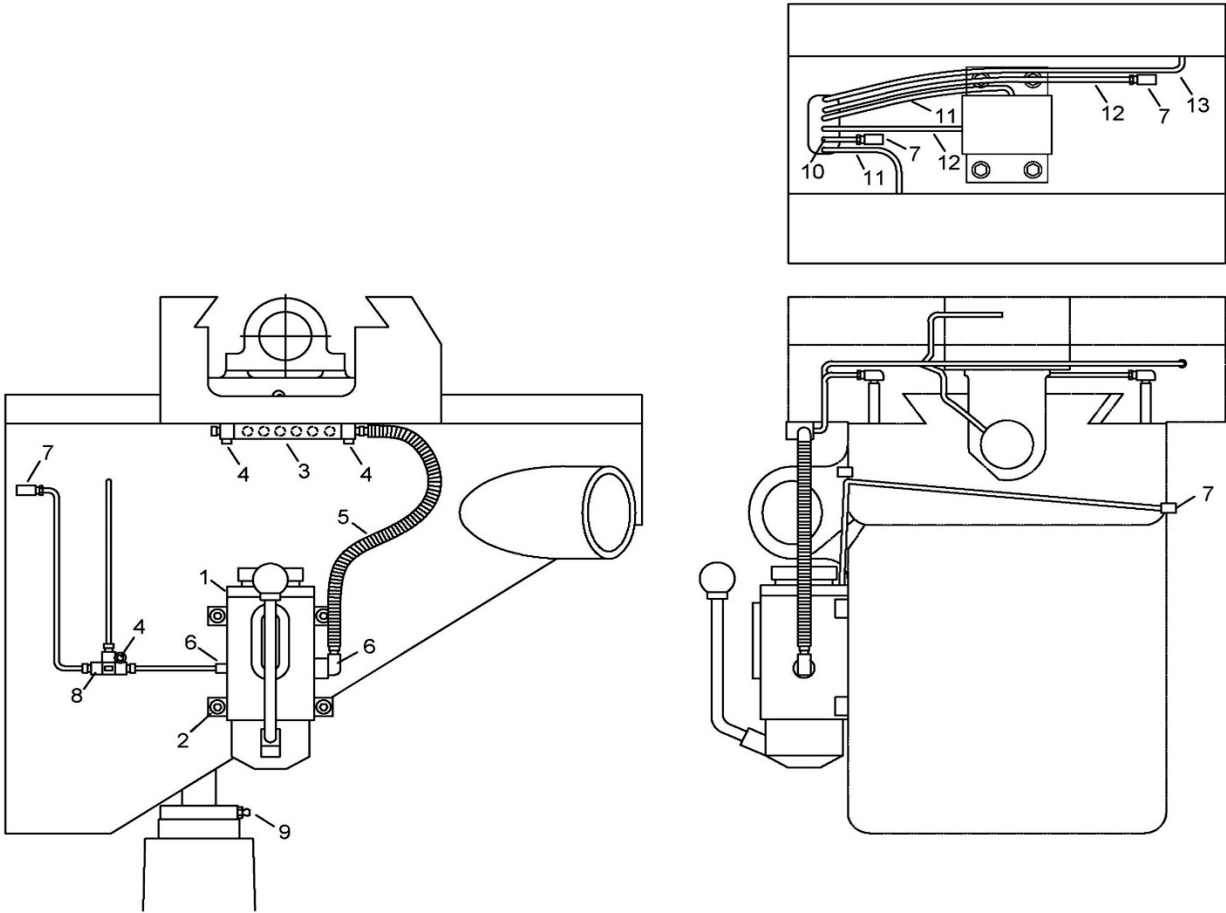
13.5.1 JTM-1050VS2 Spindle Guard Assembly – Exploded View



13.5.2 JTM-1050VS2 Spindle Guard Assembly – Parts List

Index No	Part No	Description	Size	Qty
.....	JTM949EVS-SGA	Spindle Guard Assembly (#1 thru 10)		1
1	TS-1502101	Hex Socket Cap Screw	M5x45L	2
2	JTM949EVS-H02	Support Plate		1
3	TS-2245102	Socket Head Button Screw	M5x10L	2
4	JTM949EVS-H04	Bushing Bracket		1
.....	JTM949EVS-H04A	Bushing Bracket Assembly (includes #4,5,10)		1
5	JTM949EVS-H05	Bushing		1
6	JTM949EVS-H06	Support Rod		1
7	TS-1550031	Flat Washer	Ø5 mm	2
8	TS-1502031	Hex Socket Cap Screw	M5x12L	2
9	JTM949EVS-H09	Spindle Guard		1
10	TS-1522021	Socket Set Screw	M5x8L	1

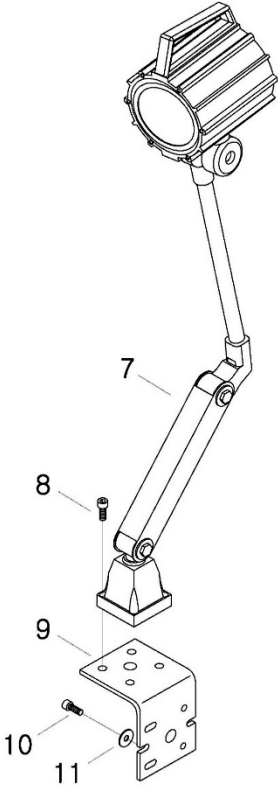
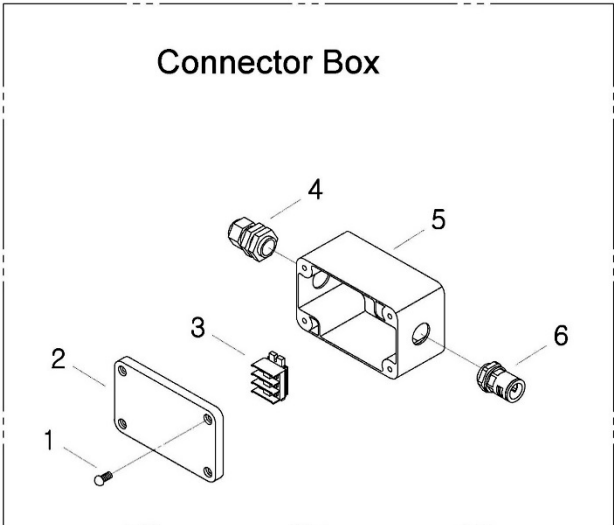
13.6.1 JTM-1050VS2 One-Shot Lubrication System – Exploded View



13.6.2 JTM-1050VS2 One-Shot Lubrication System – Parts List

Index No	Part No	Description	Size	Qty
1	LT-8	Manual Oiler		1
2	TS-1503061	Hex Socket Cap Screw	M6x25L	4
3	JTM949EVS-J09	Distributor	Ø4mm, 8 holes	1
4	TS-1502061	Hex Socket Cap Screw	M5x25L	3
5	JTM1050VS2-05	Flexible Steel Tube	Ø4-500MM	1
6	PH-1-1/PB-4	Check Joint	1/8PT	2
7	JTM949EVS-J04	Elbow Adapter	1/8PT	4
8	PKD-4	T-Joint	Ø4mm, 3 holes	1
9	JTM1050VS2-09	Grease Nipple	1/8PT	1
10	AP-180	Aluminum Pipe	Ø4x180L mm	1
11	AP-290	Aluminum Pipe	Ø4x290L mm	2
12	AP-380	Aluminum Pipe	Ø4x380L mm	2
13	AP-480	Aluminum Pipe	Ø4x480L mm	1

13.6.1 JTM-1050VS2 Work Lamp & Connector Box – Exploded View



13.6.2 JTM-1050VS2 Work Lamp & Connector Box – Parts List

Index No	Part No	Description	Size	Qty
1	JTM1050VS2-G01	Pan Head Screw	M4x16L	4
2	JTM1050VS2-G02	Plastic Connector Box Cover		1
3	JTM1050VS2-G03	Terminal Block		1
4	JTM1050VS2-G04	Cable Gland	M20S	1
5	JTM1050VS2-G05	Plastic Connector Box		1
6	JTM1050VS2-G06	Nylon Flexible Conduit Connector	FB-03BF	1
7	JTM1050VS2-G07	LED Lamp	110V LED	1
8	TS-1502041	Hex Socket Cap Screw	M5x16	4
9	JTM949EVS-G15	Work Light Bracket		1
10	TS-1503041	Hex Socket Cap Screw	M6x16	2
11	TS-1550041	Flat Washer	Ø6 mm	2