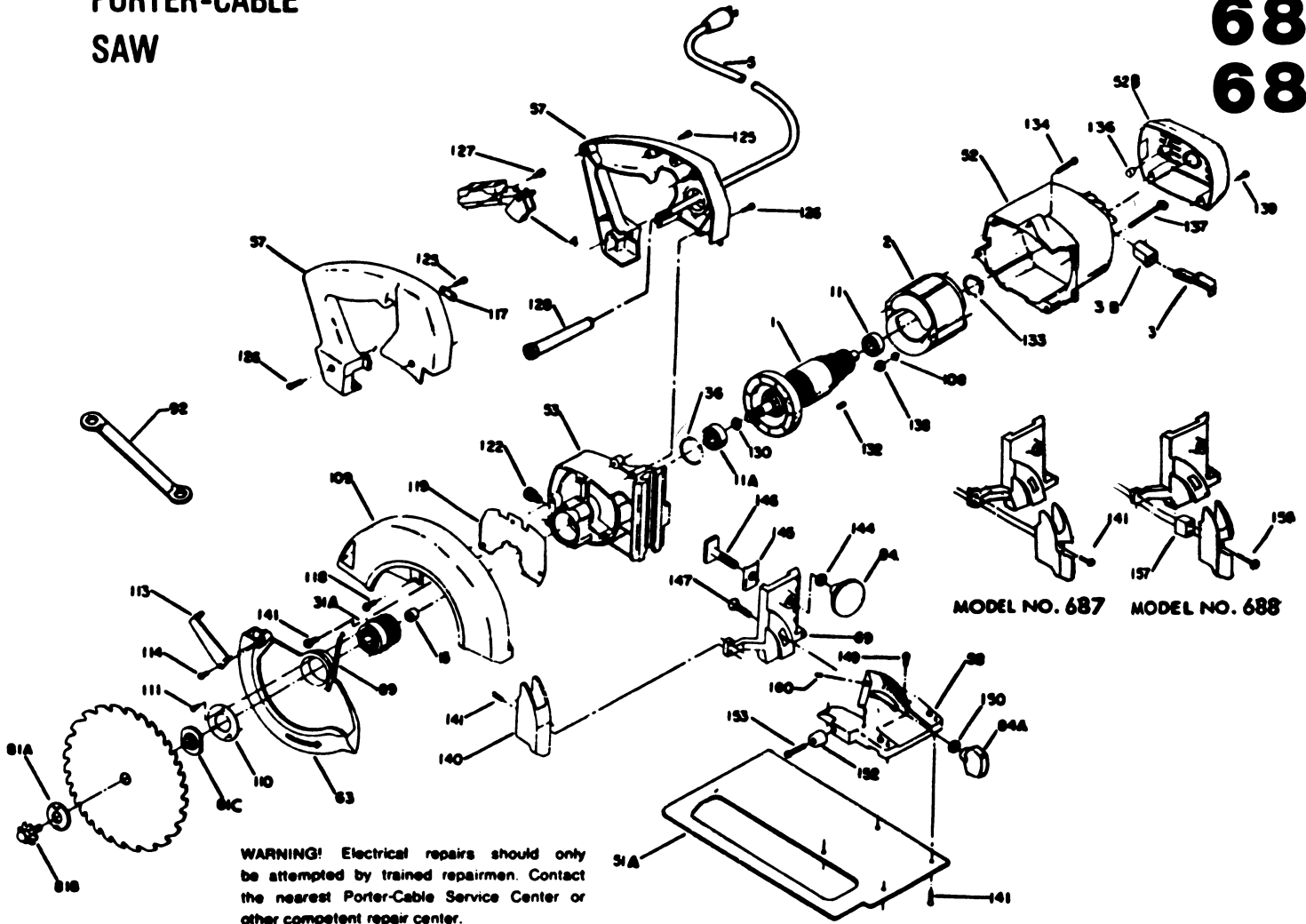


PORTER-CABLE SAW

687 688



WARNING! Electrical repairs should only be attempted by trained repairmen. Contact the nearest Porter-Cable Service Center or other competent repair center.

Ref. No.	Part No.	Description
1	685552	Armature
2	685553	Field
3	689668	Brush & Spring
3B	683698**	Brush Holder
4	687900	Switch
5	687896	Cord
11	855201	Comm Bearing
11A	855202**	Fan End Bearing
15	838833	Jackshaft Inner Brg.
31A	691021	Jackshaft Assembly Incl:
*	691696	Jackshaft & Gear
*	683624	Jackshaft Cover
*	683637	Spacer
*	855202	Ball Bearing
36 n	691594**	O-Ring
51A	685089	Base
52	685066	Motor Housing
52B	684111	End Cap
53	691598	Gear Housing
57	688111	Handle Assy, Incl: Ref. 125, 126, 127
58	684589	Angle Segment
63	684591	Telesc. Guard (687)
	684590	Telesc. Guard (688)
69	684587	Depth Adj. Slide
81A	688325	Blade Washer
81B	688332	Blade Bolt
81C	683653	Blade Holder
84	803674	Depth Adj. Knob
84A	685902	Angle Adj. Knob
89	685534	Guard Spring
92	48299	Blade Wrench
108	802414	Washer
109	684594	Upper Guard (687)
	684593	Upper Guard (688)
110	683636	Retainer
111	858008	Screw
113	847264	Guard Lever
114	844009	Screw

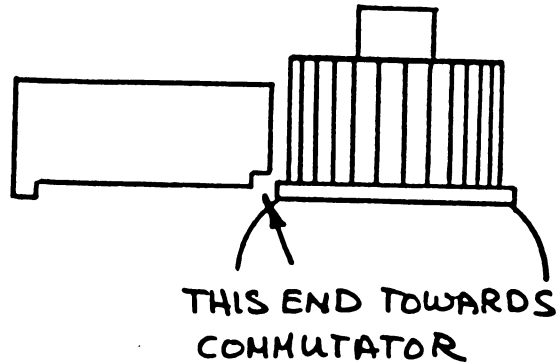
Ref. No.	Part No.	Description
117	861434	Cord Clamp
118	691596	Screw
119 n	691446	Baffle
122	803518	Grease Cup
*	688056	Grease Cup Ext.
125	859384	Screw
126	688277	Screw
127	859227	Screw
128	843464	Strain Reliever
130	853455	Retaining Ring
132	810425	Plug
133 n	683981	Load Washer
134	688278	Screw
136	683970	Button
137	685112	Screw
138	862641	Field Nut
139	848148	Screw
140	684215	Auxiliary Guard
141	845619	Screw
144	851584	Washer
145	683983	Depth Adj. Plate
146	683984	Depth Adj. Stud
147	683705	Bolt
149	843014	Screw
150	803060	Washer
152	845359	Bumper
153	845358	Screw
157	684220	Spacer
158	826232	Screw
160	861485	Set Screw
*	53124	Rip Guide Assy. Incl: Rip Guide Screw Rip Guide Spring
*	841693	Terminal & Lead Assy.
*	48230	Lubricant Tube (5 1/2 oz) (156 gm)

**See Service Notes

SERVICE NOTES

BRUSH HOLDER

Be sure the brush holder is installed as illustrated below. If installed in any other position, the armature will be damaged.



FAN END BEARING REMOVAL

The pinion end of the armature shaft is manufactured without a "center" making it difficult to hold the bearing puller screw in place on the center of the shaft.

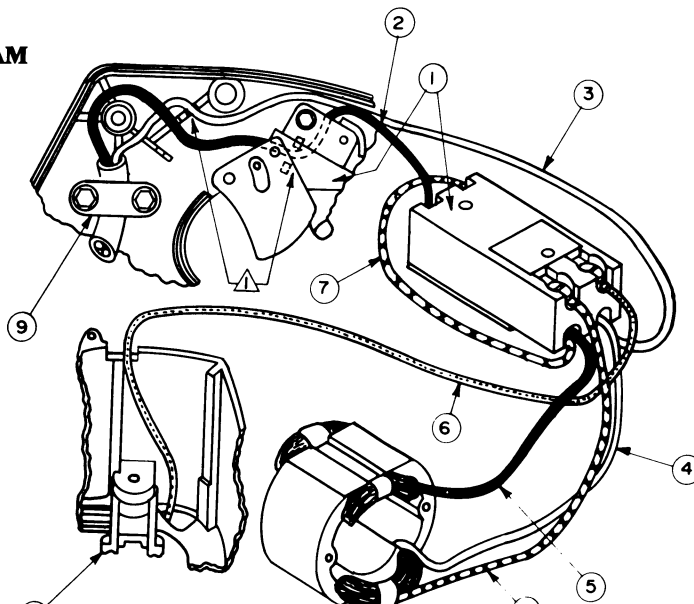
We have introduced a cap #867758 incorporating a "center" which, when placed over the pinion end of the armature shaft, enables the puller screw to center itself and prevent slippage or damage to the pinion.

These may be ordered through Technical Service, Jackson.

O-RING INSTALLATION

On Type 2 Models which incorporate an O-Ring in the Gear Housing, be sure to lubricate the O-Ring before installing it into the Gear Housing.

WIRING DIAGRAM



1-SWITCH	6- BRUSH (BLUE)
2-CORDSET (BLACK)	7-JUMPER (RED)
3-CORDSET (WHITE)	8-BRUSH (RED)
4-FIELD (WHITE)	9-STRAIN RELIEF
5-FIELD (BLACK)	10-MOTOR HSG.