



SERVICE PARTS LIST

BULLETIN NO.
54-44-0538

SPECIFY CATALOG NO. AND SERIAL NO. WHEN ORDERING PARTS		REVISED BULLETIN 54-44-0537	DATE May '94
POWER UNIT			
CATALOG NO.	6851	STARTING SERIAL NO.	758A
		WIRING INSTRUCTION 58-01-0024	

EXAMPLE:



Component Parts (Small #)
Are Included When Ordering
The Assembly (Large #).

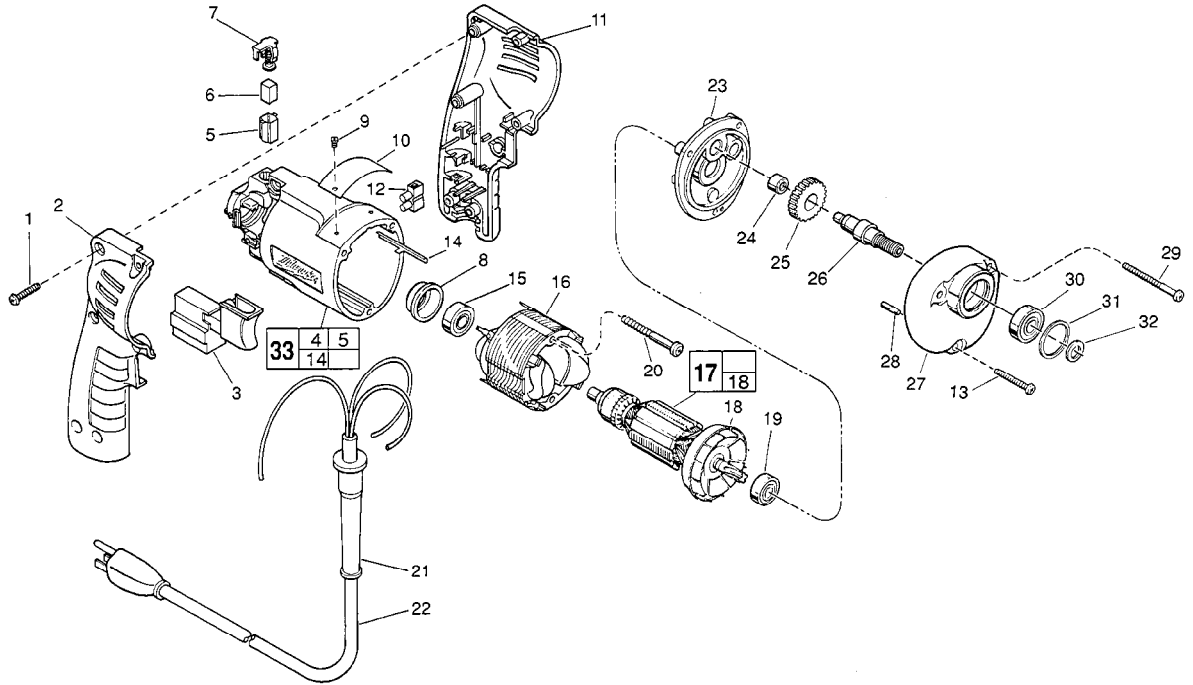


FIG.	PART NO.	DESCRIPTION OF PART	NO. REQ.
1	06-82-7284	8-16 x 3/4" Pan Hd. Slit. Plas. T-20	(6)
2	31-44-1705	Right Handle Half	(1)
3	23-66-1250	Speed Control Switch	(1)
4	23-94-6225	Ground Wire Assembly (Not Shown)	(1)
5	22-20-0830	Brush Tube	(2)
6	22-16-0275	Carbon Brush	(2)
7	23-52-1560	Brush Spring Assembly	(2)
8	22-72-0100	Bearing Cup	(1)
9	06-85-0200	Nameplate Screw	(2)
10	12-99-0850	Service Nameplate	(1)
11	31-44-1700	Left Handle Half	(1)
12	22-56-0456	Terminal Block	(1)
13	06-82-7308	7 - 18x 1-1/8" Pan Hd. Slit. Plast. T-20	(1)
14	44-60-0530	Ground Pin	(1)
15	02-04-0645	Ball Bearing	(1)
16	18-11-0060	120 V Field	(1)
17	16-10-0440	120 V D.I. Armature	(1)
18	22-84-0760	Fan Assembly	(1)
19	02-04-0847	Ball Bearing	(1)
20	06-82-7393	7-18 x 2" Pan Hd. Slit. Plast. T-20	(2)
21	44-76-0210	Cord Protector	(1)
22	22-64-3180	Cord Set	(1)
23	28-28-1950	Diaphragm	(1)
24	02-50-1620	Needle Bearing	(1)
25	32-75-3260	Spindle Gear	(1)
26	38-50-5671	Reversing Spindle	(1)
27	28-14-1830	Gear Case	(1)
28	06-65-0825	1/8 x 1/2" Groove Pin 5	(1)

FIG.	PART NO.	DESCRIPTION OF PART	NO. REQ.
29	06-82-7344	7-18 x 1-1/2" Pan Hd. Slit. Plast. T-20	(2)
30	02-04-1020	Ball Bearing	(1)
31	34-80-1400	Retaining Ring	(1)
32	45-88-7940	Washer	(1)
33	14-38-0600	Motor Housing Assembly	(1)

FIG. LUBRICATION:

27 Use 1-1/8 Oz. of Type "E" Grease, No. 49-08-4122, in Gear Case.

FIG. NOTES

- 1 Torque to 18-22 In./Lbs.
- 13,20,29 Torque to 15-20 In./Lbs.
- 8 Place in motor housing before inserting armature.
- 24 Press flush to casting surface.
- 15,19 Seal towards armature.
- 30 Seal towards retaining ring.

MILWAUKEE ELECTRIC TOOL CORPORATION
13135 W. LISBON RD., BROOKFIELD, WI 53005