



# SERVICE PARTS LIST

**BUL. 54-42-5351**

## SCREWDRIVER

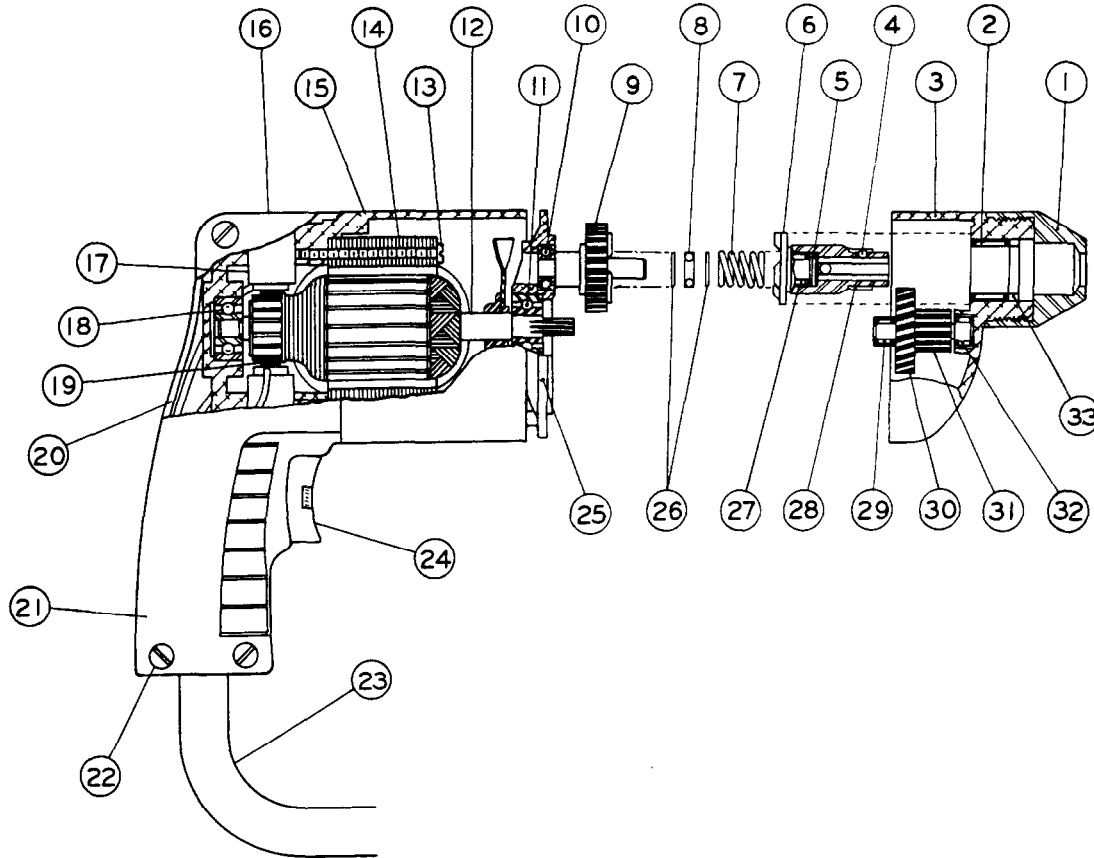
REVISED BUL 6379-2      DATE FEB. '68

**Catalog No. 6791-1**

Starting Serial No. **379-1200**

WIRING INSTR.

Both Model and Serial No. must be furnished to obtain correct parts.



### ILLUSTRATED PARTS

FIG.	PART NO.	DESCRIPTION OF PART	NO.REQ.	FIG.	PART NO.	DESCRIPTION OF PART	NO.REQ.
1	42-52-0121	Nose Cap		18	02-04-0740	Ball Bearing	
2	02-50-4030	Needle Bearing		19	22-18-0360	Carbon Brush Assy.	(2)
3	28-14-1201	Gear Case		20	31-44-0111	Left Hand Handle Half	
4	02-02-0150	5/32" Dia. Ball		21	31-44-0100	Right Hand Handle Half	
5	45-88-0540	Back-Up Washer		22	06-81-3650	8-32 x 3/4" Oval Hd. Handle Screw	(4)
★ 6	42-66-0402	Chuck		23	22-64-0450	Cord Set	
7	40-50-6600	Separator Spring		24	23-66-0520	Switch	
8	02-80-0100	Thrust Bearing		25	28-28-1381	Diaphragm	
★ 9	32-10-0092	Clutch Gear		26	45-88-0550	Thrust Washer	(2)
10	02-08-0210	Ball Bearing		27	02-50-1610	Needle Bearing	
11	02-04-0880	Ball Bearing		28	40-50-1400	Bit Retaining Spring	
12	16-22-1231	Armature		29	02-50-1210	Needle Bearing	
13	06-81-5950	6-32 x 1-7/8" Fil. Hd. Field Screw	(2)	30	32-40-1041	Intermediate Gear	
14	18-22-1121	Field Assy.		31	36-66-3901	Intermediate Pinion Shaft	
15	28-50-6091	Motor Housing		32	02-50-1620	Needle Bearing	
16	23-44-0020	Brush Retaining Cap	(2)	33	45-06-0065	Spindle Oil Seal	
17	22-22-0251	Brush Holder Assy.	(2)				

### MISCELLANEOUS PARTS NOT SHOWN

PART NO.	DESCRIPTION OF PART	NO.REQ.	PART NO.	DESCRIPTION OF PART	NO.REQ.
48-32-1070	No. 3 Phillips Insert		06-81-6350	8-32 x 1" Fil. Hd. Gear Case Sem.	(2)
06-81-3600	8-32 x 3/8" Handle Mtg. Screw	(4)	48-03-0010	Attachment Plug Adapter	
06-81-4300	3-48 x 3/16 Rd. Hd. Name Plate Screw	(2)	48-32-3050	Bit Holder	
06-81-8625	6-32 x 1/4 Brass Rd. Hd. Ground Screw		06-81-6550	8-32 x 1 1/2 Fil. Hd. Sems Gear Case Screw	(2)
06-83-0100	10-32 x 1/4 Brass Holder Set Screw	(2)	06-65-1534	1/8 x 5/8 Groove Pin	
12-98-0600	Name Plate				
45-30-0120	Ball Bearing Retaining Slug		48-32-1050	No. 2 Phillips Insert	
06-42-0400	Woodruff Key	(2)	★12-98-7010	MILWAUKEE Label	(2)
★23-86-0070	Washer				