



SERVICE PARTS LIST

BULLETIN NO.
54-42-0358

SPECIFY CATALOG NO. AND SERIAL NO. WHEN ORDERING PARTS		REVISED BULLETIN	DATE
ADJUSTABLE TORQUE SCREWDRIVER		54-42-0357	June '96
CATALOG NO. 6783-1	STARTING SERIAL NO. 471B	WIRING INSTRUCTION 58-01-0029	

EXAMPLE:

00	0
----	---

 Component Parts (Small #) Are Included
 When Ordering The Assembly (Large #).

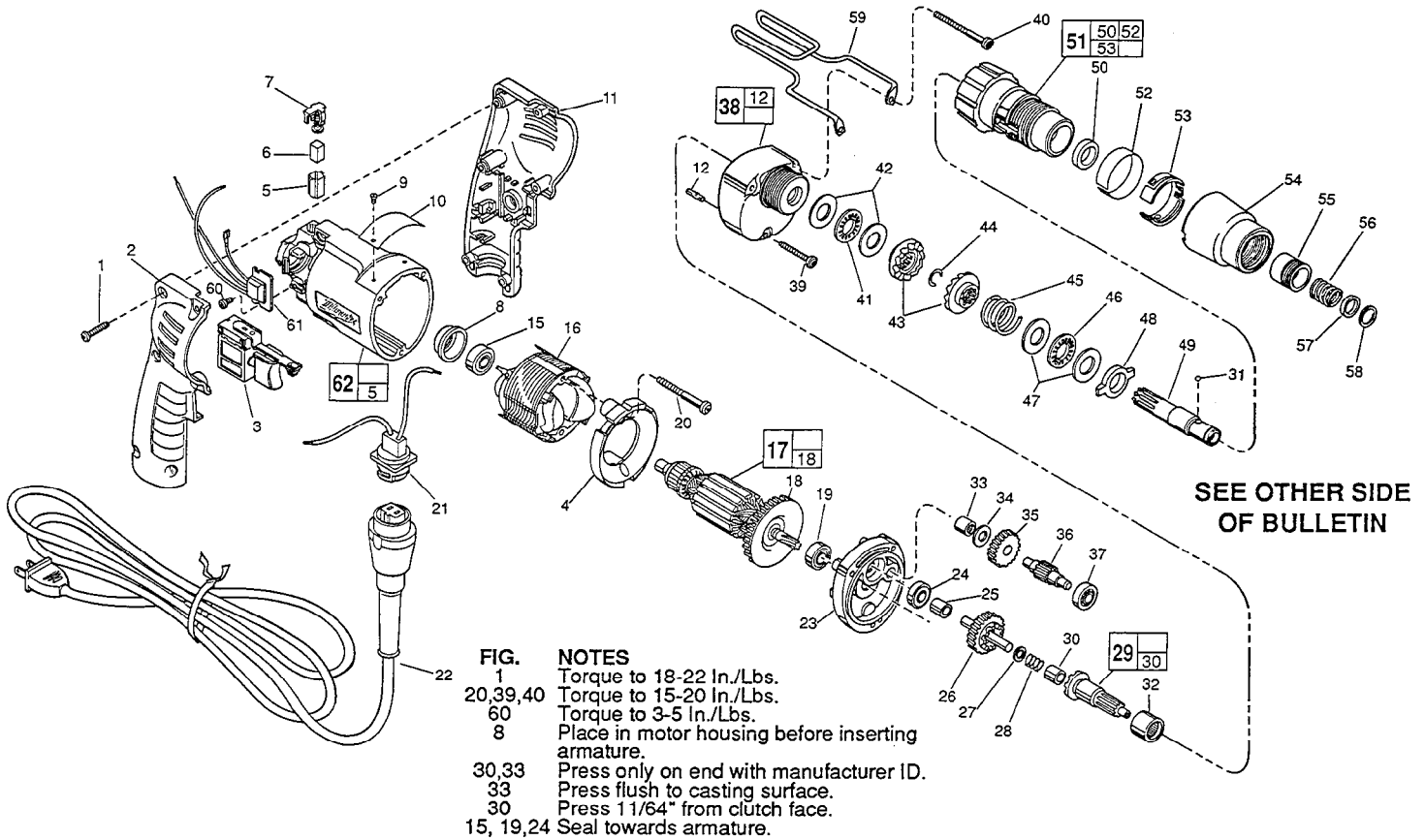


FIG. NOTES

1	Torque to 18-22 In./Lbs.
20,39,40	Torque to 15-20 In./Lbs.
60	Torque to 3-5 In./Lbs.
8	Place in motor housing before inserting armature.
30,33	Press only on end with manufacturer ID.
33	Press flush to casting surface.
30	Press 1/16" from clutch face.
15, 19,24	Seal towards armature.

FIG.	PART NO.	DESCRIPTION OF PART	NO. REQ.	FIG.	PART NO.	DESCRIPTION OF PART	NO. REQ.
	1	8-16 x 3/4" Pan Hd. Slit. Plast. T-20	(6)	39	06-82-7344	7-18 x 1-1/2" Pan Hd. Slit. Plast. T-20	(1)
★	2	31-44-1845	(1)	40	06-82-7464	7-18 x 2-3/4" Pan Hd. Slit. Plast. T-20	(2)
	3	23-66-2145	(1)	41	02-80-1210	Thrust Bearing	(1)
★	4	42-14-0380	(1)	42	45-88-0510	Thrust Bearing Washer	(2)
	5	22-20-0830	(2)	43	42-70-5016	Drive Clutch	(2)
	6	22-16-0275	(2)	44	34-60-0545	Retaining Ring	(1)
	7	23-52-1560	(2)	45	40-50-8000	Clutch Spring	(1)
	8	22-72-0100	(1)	46	02-80-6020	Thrust Bearing	(1)
	9	06-85-0200	(2)	47	45-88-7150	Thrust Bearing Washer	(2)
★	10	12-99-0860	(1)	48	44-90-4280	Adjustment Ring	(1)
★	11	31-44-1840	(1)	49	42-66-0676	Chuck Shaft	(1)
	12	06-65-0825	(1)	50	45-06-0106	Oil Seal	(1)
	15	02-04-0645	(1)	51	14-08-0190	Clutch Housing Assembly	(1)
	16	18-11-0150	(1)	52	10-79-3100	Torque Setting Label	(1)
★	17	16-10-0690	(1)	53	42-16-0140	Adjustment Band	(1)
★	18	22-84-0880	(1)	54	42-76-0460	Adjustment Collar	(1)
	19	02-04-0848	(1)	55	42-76-0390	Locking Collar	(1)
★	20	06-82-7203	(2)	56	40-50-8005	Compression Spring	(1)
★	21	22-56-0665	(1)	57	45-36-1300	Spacer	(1)
★	22	48-76-5010	(1)	58	34-60-2390	Retaining Ring	(1)
	23	28-28-1960	(1)	59	42-70-5080	Belt Clip	(1)
	24	02-04-0645	(1)	60	06-82-7212	4-20 x 1/4" Pan Hd. Slit. Plastite T-10	(1)
	25	45-36-1280	(1)	61	14-20-0650	Remote Electronic Assembly	(1)
	26	32-10-4045	(1)	★ 62	14-38-0590	Motor Housing Assembly	(1)
	27	45-88-0712	(1)		49-66-3016	5/16" Hex Socket	(1)
	28	40-50-6600	(1)				
	29	14-73-0250	(1)				
	30	02-50-2400	(1)				
	31	02-02-0130	(1)				
	32	02-50-4225	(1)				
	33	02-50-2410	(1)				
	34	45-88-7990	(1)				
	35	32-40-1612	(1)				
	36	36-66-4101	(1)				
	37	02-04-0640	(1)				
	38	14-30-0600	(1)				

FIG. LUBRICATION

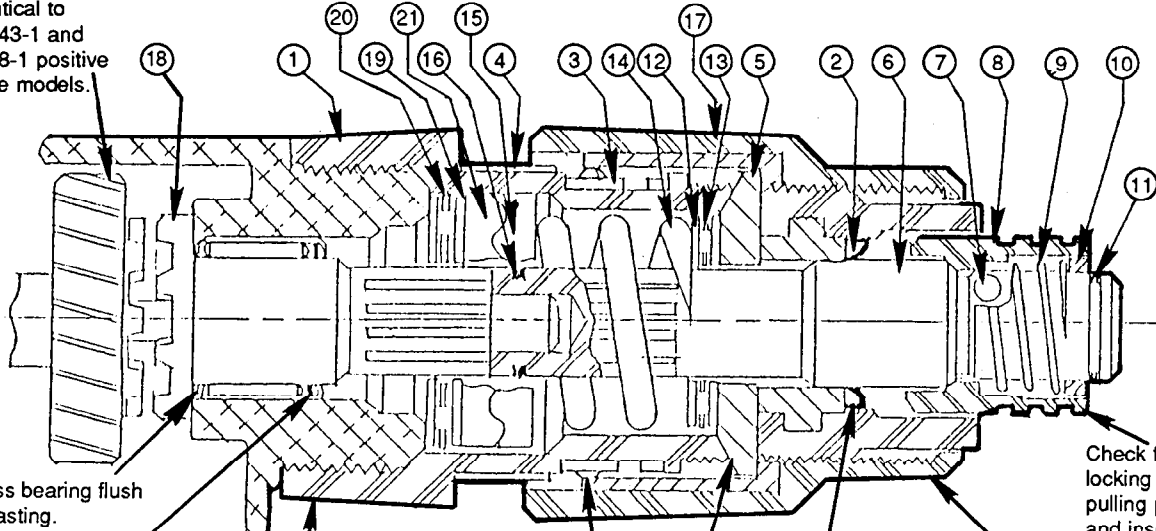
38	1-1/2 Oz. Type "E" Grease, No. 49-08-4122.
43	1/16 Oz. Type "F" Grease, No. 49-08-4160 On Clutch Faces.
41,46,50	Apply Small Amount Of "F" Grease, No. 49-08-4160.
48	Apply Small Amount Of "F" Grease, No. 49-08-4160 On Tabs.

MILWAUKEE ELECTRIC TOOL CORPORATION
 13135 W. LISBON RD., BROOKFIELD, WI 53005
 Dwg. 1



**PARTS LIST IN ORDER OF ASSEMBLY
ADJUSTABLE TORQUE SCREWDRIVER
CAT. NO. 6583-1 AND 6783-1**

Clutch gear and other gears identical to #6543-1 and 6798-1 positive drive models.



Press bearing flush to casting. Single seal bearing seal towards front.

Clutch Housing Assembly No. 14-08-0190 should be tightened to 45-55 in./lbs.

Dimples on adjustment band (Item #3) must be positioned to rear in slot.

Bevel must be toward rear of tool.

Oil seal mounted flush with inside surface and lip must face gear case.

Check function of locking collar by pulling part forward and inserting 1/4" power shank bit.

For ease of assembly, turn adjustment collar to lowest possible setting.

LUBRICATION

Apply 1/16 oz. Type "F" Grease on clutch faces of drive clutch (#15 & #21). Apply small amount of Type "F" Grease on trust bearings (#13 & #20, oil seal lip #2 and tabs of adjustment ring #5).

Drive clutches must slide back and forth freely on shaft splines. Defective splines that stick will not function properly.

ITEM NO.	PART NO.	DESCRIPTION
Clutch Housing Assembly No. 14-08-0190	1	43-76-0550 Clutch Housing (Includes Bushing No. 42-40-0920)
	2	45-06-0106 Oil Seal
	3	42-16-0140 Adjustment Band
	4	10-79-3100 Torque Setting Label
	5	44-90-4280 Adjustment Ring
Sub-Assembly	6	42-66-0676 Chuck Shaft
	7	02-02-0130 Steel Ball
	8	42-76-0390 Locking Collar
	9	40-50-8005 Spring
	10	45-36-1300 Spacer
	11	34-60-2390 Retaining Ring
	12	45-88-7150 Thrust Washers (2 each) (Place on each side of Item # 13)
	13	02-80-6020 Thrust Bearing
	14	40-50-8000 Clutch Spring
	15	42-70-5016 Drive Clutch
	16	34-60-0545 Retaining Ring
17	42-76-0460 Adjustment Collar (Includes Insert No. 43-84-0740)	
18	14-73-0250 Clutch Shaft Assembly (Includes Clutch Shaft No. 36-14-0661 and Needle Bearing No. 02-50-2400)	
19	45-88-0510 Thrust Bearing Washers (2 each) (Place on each side of Item # 20)	
20	02-80-1210 Thrust Bearing	
21	42-70-5016 Drive Clutch	

Clutch Sub-Assembly

Not In Order Of Assembly