



SERVICE PARTS LIST

BUL. 54-42-0350

0-2500 R.P.M. ADJ. CLUTCH SCREWDRIVER

REVISED BUL DATE
March '72

Catalog No. 6783-1

Starting Serial No. **471-1001**

WIRING INSTR. **58-01-0650**

Both Model and Serial No. must be furnished to obtain correct parts.

NOTE
SEE REVERSE SIDE FOR CLUTCH ASSEMBLY DETAILS

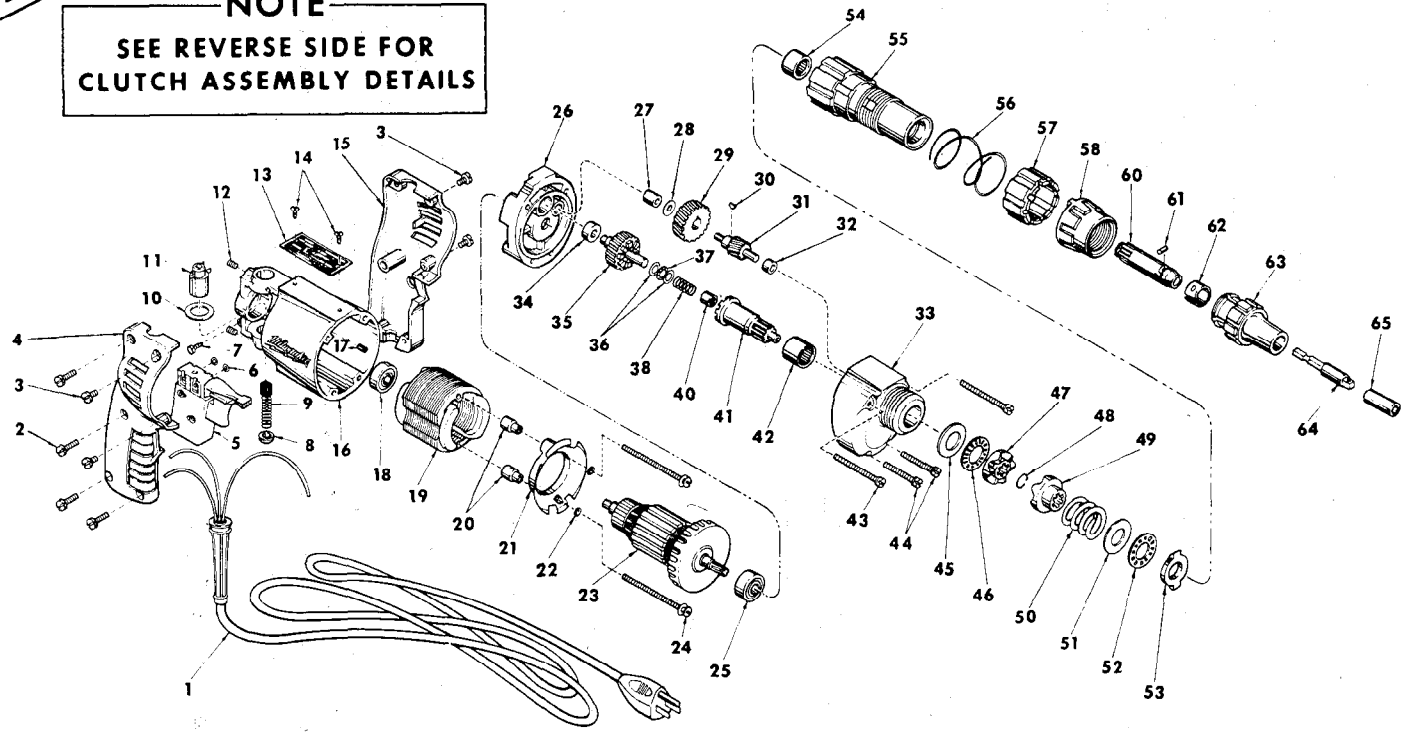
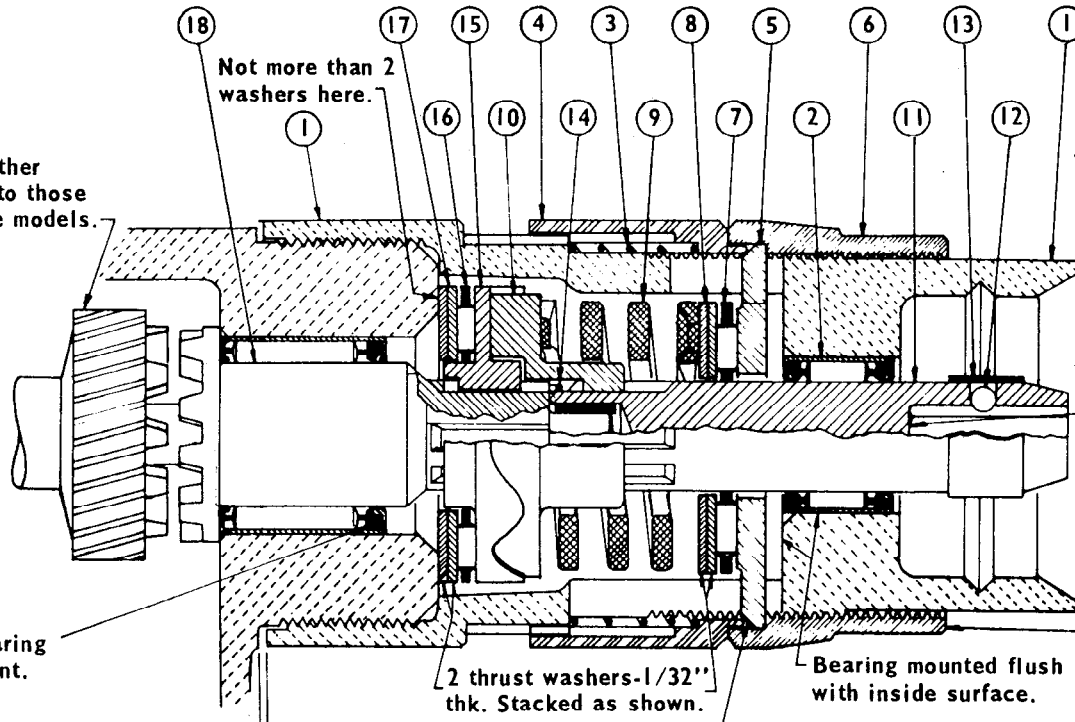


FIG.	PART NO.	DESCRIPTION OF PART	NO. REQ.	FIG.	PART NO.	DESCRIPTION OF PART	NO. REQ.
1	22-64-0660	Cord Set	(1)	35	32-10-2500	Clutch Gear	(1)
2	06-81-0400	8-32x3/4 Pan Head Screw	(4)	36	45-88-0550	Thrust Washer	(2)
3	06-81-0450	8-32x3/8 Pan Head Screw	(4)	37	02-80-0100	Thrust Bearing	(1)
4	31-44-0250	R.H. Handle Half	(1)	38	40-50-6600	Separator Spring	(1)
5	23-66-0790	Rev. Speed Control Switch	(1)	39	36-14-0675	Clutch Shaft Assembly (includes fig. nos. 40 and 41)	(1)
6	06-97-1700	Lock Washer (For Switch)	(6)	40	02-50-1610	Needle Bearing	(1)
7	06-81-8625	6-32x1/4 Ground Screw	(1)	41	36-14-0660	Clutch Shaft	(1)
8	23-44-0020	Brush Retaining Screw	(2)	42	02-50-4035	Needle Bearing	(1)
9	22-18-0360	Carbon Brush	(2)	43	06-81-6740	8-32 x 2 Fil. Hd. Sem	(1)
10	23-86-0105	Washer	(2)	44	06-81-6550	8-32 x 1-1/2 Fil. Hd. Sem	(2)
11	22-22-0251	Brush Holder Assy.	(2)	45	45-88-0510	Thrust Washer	(2)
12	06-83-2430	10-32x1/4 Hdls. Skt. Screw	(2)	46	02-80-1210	Thrust Bearing	(1)
13	12-98-0600	Nameplate	(1)	47	42-70-5010	Drive Clutch	(1)
14	06-85-0200	6x1/4 Round Hd. Type Z Screw	(2)	48	34-60-0840	Retaining Ring	(1)
15	31-44-0261	L.H. Handle Half	(1)	49	42-70-5020	Driven Clutch	(1)
16	28-50-6091	Motor Housing (Incl. Fig.17)	(1)	50	40-50-1010	Compression Spring	(1)
17	45-30-0120	Ball Brg. Retaining Slug	(1)	51	45-88-7150	Thrust Washer	(1)
18	02-04-0740	Ball Bearing	(1)	52	02-80-6020	Thrust Bearing	(1)
19	18-22-1160	115 V. Field	(1)	53	42-05-0010	Adjustment Ring	(1)
20	45-36-0601	Baffle Spacer	(2)	54	02-50-3225	Needle Bearing	(1)
21	31-05-0010	Baffle	(1)	55	28-50-2000	Clutch Housing	(1)
22	45-88-7170	Washer	(2)	56	40-50-0910	Spring	(1)
23	16-22-1295	115 V. Armature	(1)	57	31-58-0030	Locking Collar	(1)
24	06-81-8695	6-32x2-7/16 Round Hd. Sems	(2)	58	42-05-0040	Adjustment Ring	(1)
25	02-04-0880	Ball Bearing	(1)	59	42-66-0675	Chuck Shaft Assembly (includes fig. nos. 60 thru 62)	(1)
26	28-28-1451	Diaphragm	(1)	60	42-66-0670	Chuck Shaft	(1)
27	02-50-1210	Needle Bearing	(1)	61	02-55-0150	Loose Roller Bearing	(1)
28	45-88-7280	Nylon Thrust Washer	(1)	62	40-15-1450	Bit Retaining Spring	(1)
29	32-40-1611	Intermediate Gear	(1)	63	48-32-0250	1/4 Bit Guide	(1)
30	06-42-0400	Woodruff Key	(1)		48-32-0312	5/16 Bit Guide	(1)
31	36-66-4100	Intermediate Pinion Shaft	(1)		48-32-0375	3/8 Bit Guide	(1)
32	02-50-1635	Needle Bearing	(1)	64	48-32-2050	1/4 Driver (For Sockets)	(1)
33	28-14-1210	Gear Case (Includes 06-65-0825 Groove Pin)	(1)	65	49-66-3010	5/16 Hex Socket	(1)
34	02-08-0210	Ball Bearing	(1)				

PARTS LISTED IN ORDER OF ASSEMBLY

ITEM NO.	PART NO.	DESCRIPTION
1	28-50-2000	CLUTCH HOUSING
2	02-50-3225	SEALED ROLLER BEARING SPRING
3	40-50-0910	LOCKING COLLAR
4	31-58-0030	ADJUSTMENT RING
5	42-05-0010	ADJUSTING RING
6	42-05-0040	THRUST BEARING
7	02-80-6020	THRUST WASHERS (2 ea.)
8	45-88-7150	COMPRESSION SPRING
9	40-50-1010	DRIVEN CLUTCH CHUCK SHAFT
10	42-70-5020	LOOSE ROLLER BNG.
11	42-66-0670	BIT RETAINING SPRING
12	02-55-0150	RETAINING RING
13	40-50-1450	DRIVE CLUTCH THRUST BEARING
14	34-60-0840	THRUST WASHERS (2 ea.)
15	42-70-5010	CLUTCH SHAFT
16	02-80-1210	THRUST BEARING
17	45-88-0510	THRUST WASHERS (2 ea.)
18	36-14-0660	CLUTCH HOUSING



Clutch gear & other gears identical to those in positive drive models.

Not more than 2 washers here.

PRE-ASSEMBLE

CLUTCH SUB-ASSEMBLY

NOT IN ORDER OF ASSEMBLY

1/4" hex bits, when installed, should move back & forth freely for about 1/8". If bit jams or sticks near bottom, replace 42-66-0670 chuck shaft.

Single seal bearing seal toward front.

2 thrust washers-1/32" thk. Stacked as shown.

Bearing mounted flush with inside surface.

For ease of assembly, turn adjusting ring to lowest possible setting.

1/32" space is normal- if greater, thrust washer may be caught between clutch housing and gear case.

Bevel must be toward rear of tool - ground surface toward front.

Wavy clutch splines must slide back & forth freely on shaft splines. Defective splines that stick will not allow proper functioning.

LUBRICATION

Apply 1/2 tsp. type A grease on wavy surface of item 15 and small amount on thrust bearings, items 7 & 16. Gear case lub. same as all other screwdrivers.

ASSEMBLY DETAILS-ADJUSTABLE CLUTCH MECHANISM