



SERVICE PARTS LIST

BULLETIN NO.
54-42-5528

SPECIFY CATALOG NO. AND SERIAL NO. WHEN ORDERING PARTS		REVISED BULLETIN 54-42-5527	DATE Dec.'90
MAGNUM SCREW-SHOOTER		WIRING INSTRUCTION 58-01-0122	
CATALOG NO. 6754-1	STARTING SERIAL NO. 572-48400		

EXAMPLE:
Component Parts (Small #)
Are Included When Ordering
The Assembly (Large #).

00 0

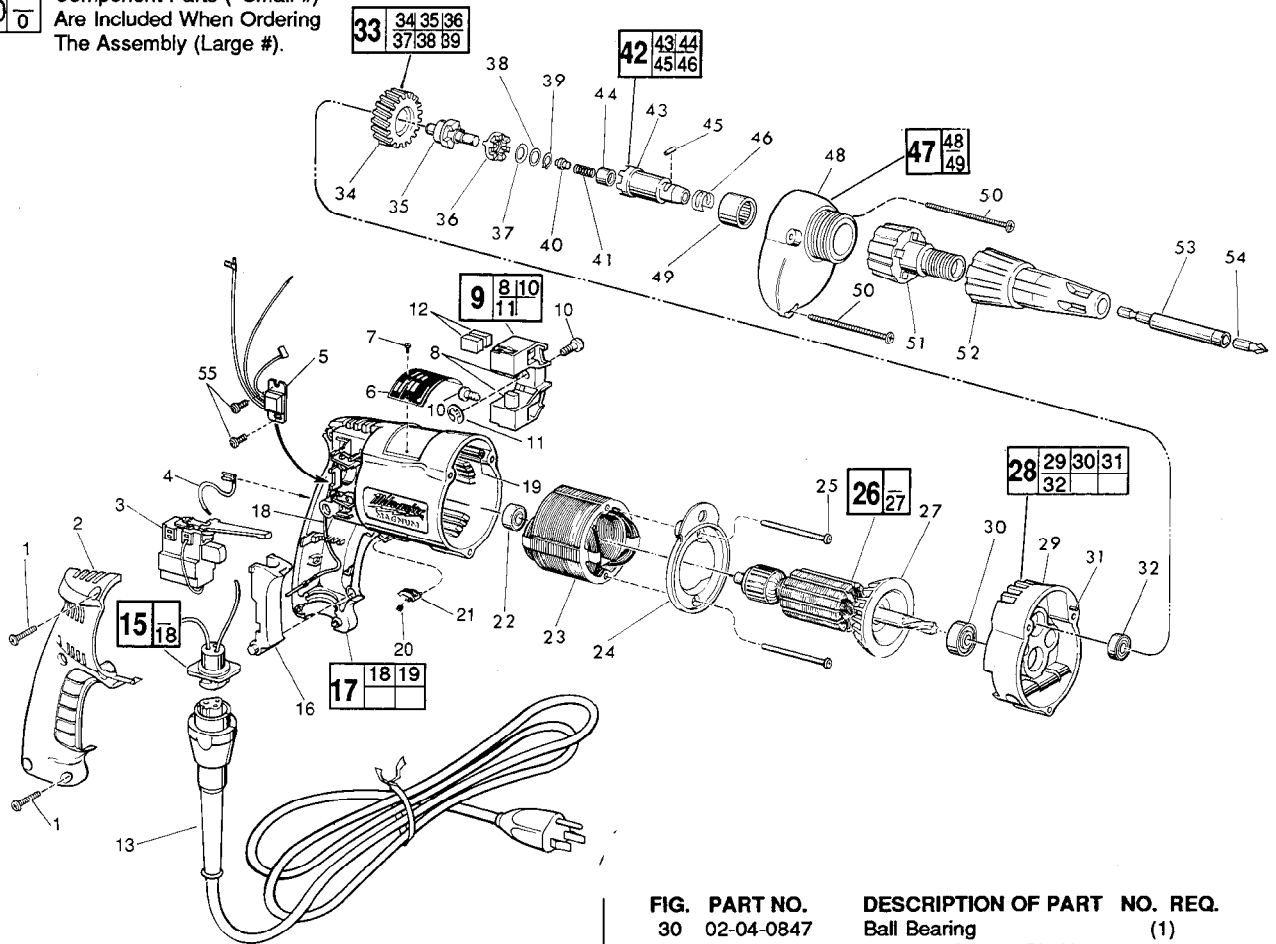


FIG.	PART NO.	DESCRIPTION OF PART	NO.	REQ.
1	06-95-0185	7-18 x 11/16 Plastite Screw	(5)	
2	31-15-0101	Handle Cover	(1)	
★ 3	23-66-1665	Reversing Switch	(1)	
4	23-94-9635	2-1/4" Lead Assembly	(1)	
★ 5	14-20-0245	Remote Electronic Assembly	(1)	
6	12-99-0081	Nameplate Blank	(1)	
7	06-85-0200	Nameplate Screw	(2)	
8	22-16-0275	Carbon Brush	(2)	
9	22-22-0350	Brush Holder Assembly	(1)	
10	31-75-0011	Brush Holder Screw	(2)	
11	34-60-0500	1/4" External Retaining Ring	(1)	
12	22-16-0275	Carbon Brush (Spares)	(2)	
13	48-76-4008	Cord Set	(1)	
15	22-56-0302	Pin Housing Assembly	(1)	
16	45-72-0080	Trigger	(1)	
★ 17	14-38-0356	Motor Housing Assembly	(1)	
18	23-94-9686	Ground Wire Assembly	(1)	
19	44-60-0570	Grounding Pin	(1)	
20	40-50-0085	Lock Button Spring	(1)	
21	42-42-0150	Lock Button	(1)	
22	02-04-0645	Ball Bearing	(1)	
23	18-10-0045	120 Volt Field	(1)	
24	31-05-0065	Baffle	(1)	
25	06-95-0140	No. 7 x 1-7/8" Pan Hd. Screw	(2)	
26	16-10-0510	120 Volt Armature Assembly	(1)	
27	22-84-0650	Fan Assembly	(1)	
28	14-13-0370	Diaphragm Assembly	(1)	
29	28-28-1590	Diaphragm	(1)	

FIG.	PART NO.	DESCRIPTION OF PART	NO.	REQ.
30	02-04-0847	Ball Bearing	(1)	
31	06-65-0825	1/8 x 1/2 Groove Pin No. 5	(1)	
32	02-04-0645	Ball Bearing	(1)	
33	32-10-4040	Clutch Gear Assembly	(1)	
34	32-75-2930	Spindle Gear	(1)	
35	36-14-0685	Gear Shaft	(1)	
36	42-70-5030	Drive Clutch	(1)	
37	45-88-0705	Spring Washer	(1)	
38	45-88-0550	Flat Washer	(1)	
39	34-60-0510	External Retaining Ring	(1)	
40	44-60-0500	Thrust Pin	(1)	
41	40-50-0080	Separator Spring	(1)	
42	14-73-0120	Chuck Shaft Assembly	(1)	
43	42-66-6770	Chuck Shaft	(1)	
44	02-50-1610	Needle Bearing	(1)	
45	02-55-0150	Loose Roller Bearing	(1)	
46	40-50-1450	Bit Retaining Spring	(1)	
47	14-30-0350	Gear Case Assembly	(1)	
48	28-14-1460	Gear Case	(1)	
49	02-50-4050	Needle Bearing	(1)	
50	06-95-0140	No. 7 x 1-7/8" Pan Hd. Screw	(3)	
51	48-32-2500	Bit Housing	(1)	
★ 52	49-26-1040	Locator Assembly	(1)	
53	48-32-3025	Magnet Bit Holder 1/4 Hex.	(1)	
54	48-32-1050	Insert Bit No. 2 Phil 1/4 H	(1)	
★ 55	06-82-7212	4-20x1/4" Pan Hd. Plastite Torx	(2)	
	10-98-5986	Warning Label	(1)	

FIG. LUBRICATION

48 1-1/2OZ. TYPE "E" Grease, No. 49-08-4121

MILWAUKEE ELECTRIC TOOL CORPORATION
13135 W. LISBON RD., BROOKFIELD, WI 53005