

# SERVICE PARTS LIST

BULLETIN NO.  
54-42-0133

SPECIFY CATALOG NO. AND SERIAL NO. WHEN ORDERING PARTS		REVISED BULLETIN	DATE
D.I. DRYWALL SCREWDRIVER		54-42-0132	April '88
CATALOG NO. 6753-1	STARTING SERIAL NO. 704-165000	WIRING INSTRUCTION 58-01-0019	

EXAMPLE:  
Component Parts ( Small #)  
Are Included When Ordering  
The Assembly (Large #).

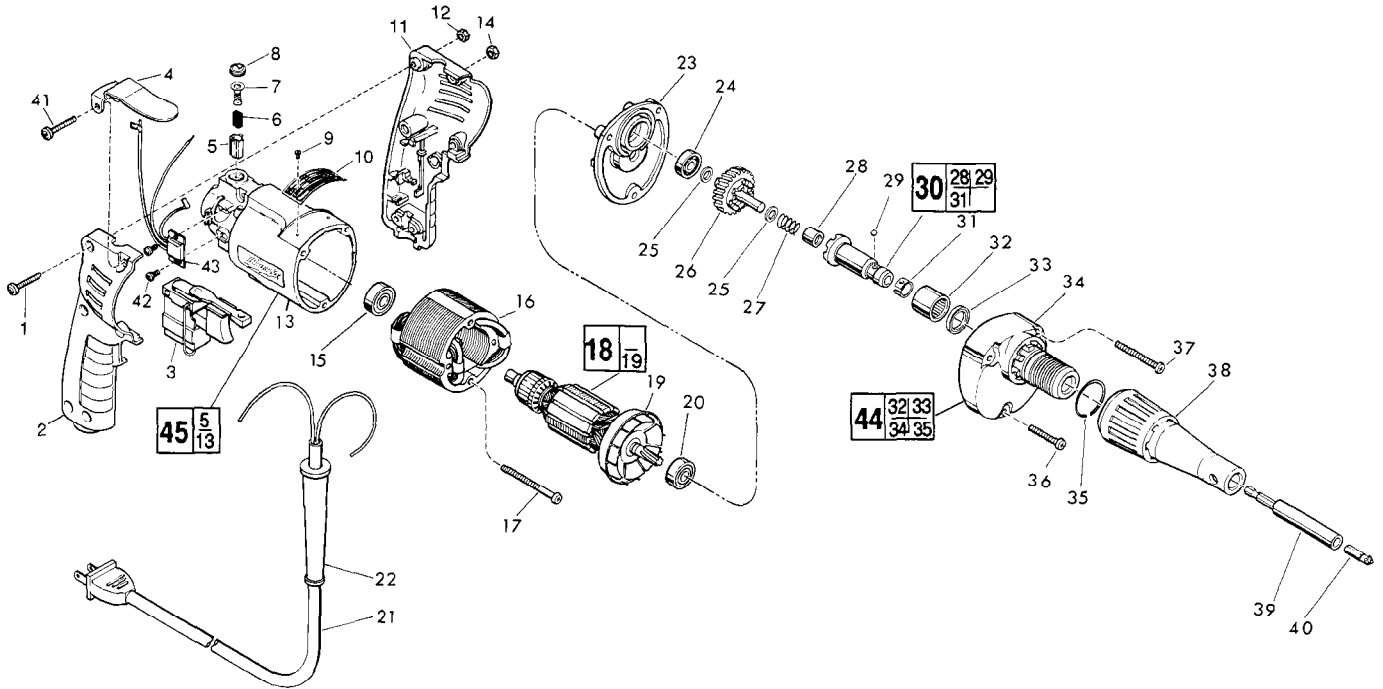


FIG.	PART NO.	DESCRIPTION OF PART	NO. REQ.	FIG.	PART NO.	DESCRIPTION OF PART	NO. REQ.
★ 1	06-82-2361	8-32x15/16" Pan Hd. Slit. Torx Screw	(5)	30	42-66-0766	Clutch Chuck Assembly	(1)
2	31-44-1130	Right Handle Half	(1)	31	40-50-0510	Bit Retaining Spring	(1)
★ 3	23-66-1655	Speed Control Switch	(1)	32	02-50-4220	Needle Roller Bearing	(1)
★ 4	42-70-0280	Belt Clip	(1)	33	45-06-0106	Oil Seal	(1)
5	22-20-0530	Brush Tube	(2)	34	28-14-1581	Gear Case	(1)
6	22-16-0275	Carbon Brush	(2)	35	44-90-0400	Locator Ring	(1)
7	23-52-0210	Brush Spring Assembly	(2)	★ 36	06-82-7296	7-18x1" Pan Hd. Slit. Plast. Torx Screw	(1)
8	23-44-0120	Brush Retaining Screw	(2)	★ 37	06-82-7344	7-18x1-1/2" Pan Hd. Slit. Plast. Torx Screw	(2)
9	06-85-0200	Nameplate Screw	(2)	38	49-26-1030	Drywall Locator Assembly	(1)
10	12-99-0311	Nameplate Blank	(1)	39	48-32-3065	Magnetic Bit Holder	(1)
11	31-44-1140	Left Handle Half	(1)	40	48-32-1050	Insert Bit	(1)
12	06-55-0835	8-32 Hex Nut	(5)	★ 41	06-82-2362	8-32x1" Pan Hd. Slit. Torx Screw	(1)
★ 13	31-50-0346	Motor Housing	(1)	★ 42	06-82-7212	4-20x1/4" Pan Hd. Slit. Plast. Torx Screw	(2)
★ 14	06-55-0825	8-32 Hex Nut	(1)	★ 43	14-20-0240	Remote Electronic Assembly	(1)
15	02-04-0645	Ball Bearing	(1)	★ 44	14-30-0430	Gear Case Assembly	(1)
16	18-10-0060	120 Volt Field	(1)	★ 45	14-38-0425	Motor Housing Assembly	(1)
★ 17	06-82-7368	7x1-3/4" Pan Hd. Slit. Plast. Torx Screw	(2)		10-98-6005	Warning Label	(1)
18	16-10-0555	120 Volt D.I. Armature	(1)				
19	22-84-0760	Fan Assembly	(1)				
20	02-04-0848	Ball Bearing	(1)				
21	22-64-0215	Cord Set	(1)				
22	44-76-0130	Cord Protector	(1)				
23	28-28-1685	Diaphragm	(1)				
24	02-04-0645	Ball Bearing	(1)				
25	45-88-0712	Thrust Washer	(2)				
26	32-10-1021	Clutch Gear Assembly	(1)				
27	40-50-6600	Separator Spring	(1)				
28	02-50-2400	Needle Bearing	(1)				
29	02-02-0130	Steel Ball	(1)				

FIG. LUBRICATION  
34 1/8 Oz. Type "E" Grease, No. 49-08-4121.  
Place Near Clutch Chuck In Gear Case.

FIG. NOTE  
1,41 Torque To 14-18 In. /Lbs.  
17,36,37 Torque To 15-20 In. /Lbs.