



SERVICE PARTS LIST

BULLETIN NO.
54-42-5183

SPECIFY CATALOG NO. AND SERIAL NO. WHEN ORDERING PARTS		REVISED BULLETIN 54-42-5182	DATE Apr.'93
T.S.C. REV. DRYWALL SCREW DRIVER		WIRING INSTRUCTION 58-01-0022	
CATALOG NO. 6750-1	STARTING SERIAL NO. 464-343768		

EXAMPLE:
Component Parts (Small #)
Are Included When Ordering
The Assembly (Large #).

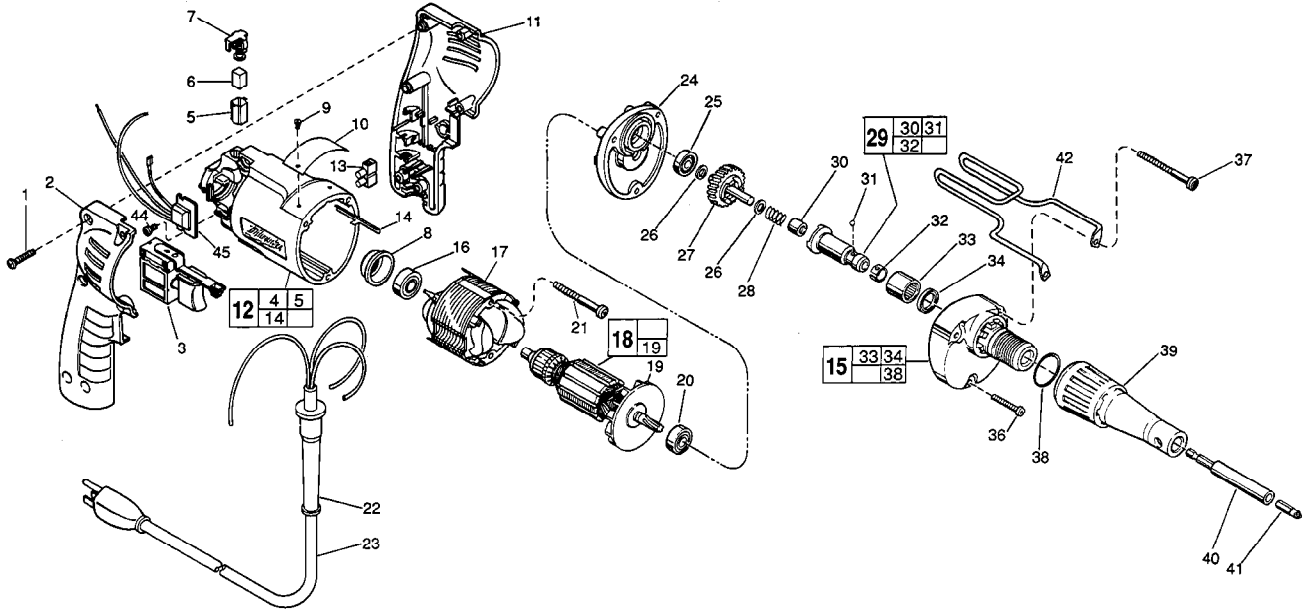


FIG.	PART NO.	DESCRIPTION OF PART	NO. REQ.
★ 1	06-82-7284	8-16x3/4" Pan Hd. Slit. Plast. T-20	(6)
★ 2	31-44-1705	Right Handle Half	(1)
3	23-66-1655	Speed Control Switch	(1)
★ 4	23-94-6225	Ground Wire Assembly (Not Shown)	(1)
★ 5	22-20-0790	Brush Tube	(2)
6	22-16-0275	Carbon Brush	(2)
★ 7	23-52-1560	Brush Spring Assembly	(2)
★ 8	22-72-0100	Bearing Cup	(1)
9	06-85-0200	Nameplate Screw	(2)
★ 10	12-99-0850	Service Nameplate	(1)
★ 11	31-44-1700	Left Handle Half	(1)
12	14-38-0550	Motor Housing Assembly	(1)
13	22-56-0456	Terminal Block	(1)
14	44-60-0530	Ground Pin	(1)
★ 15	14-30-0430	Gear Case Assembly	(1)
16	02-04-0645	Ball Bearing	(1)
★ 17	18-11-0150	120 Volt Field	(1)
★ 18	16-10-0360	120 Volt Armature	(1)
★ 19	22-84-0830	Fan Assembly	(1)
20	02-04-0848	Ball Bearing	(1)
21	06-82-7393	7-18x2" Pan Hd. Slit. Plast. T-20	(2)
★ 22	44-76-0210	Cord Protector	(1)
23	22-64-3180	Cord Set	(1)
★ 24	28-28-1930	Diaphragm	(1)
25	02-04-0645	Ball Bearing	(1)
26	45-88-0712	Thrust Washer	(2)
27	32-10-1041	Clutch Gear Assembly	(1)
28	40-50-6600	Separator Spring	(1)

FIG.	PART NO.	DESCRIPTION OF PART	NO. REQ.
29	42-66-0766	Clutch Chuck Assembly	(1)
30	02-50-2400	Needle Bearing	(1)
31	02-02-0130	Steel Ball	(1)
32	40-50-0510	Bit Retaining Spring	(1)
33	02-50-4220	Needle Roller Bearing	(1)
34	45-06-0106	Oil Seal	(1)
35	28-14-1581	Gear Case	(1)
36	06-82-7320	7-18x1-1/4" Pan Hd. Slit. Plast. T-20	(1)
37	06-82-7368	7-18x1-3/4" Pan Hd. Slit. Plast. T-20	(2)
38	44-90-0400	Locator Ring	(1)
39	49-26-1030	Drywall Locator Assembly	(1)
40	48-32-3065	Magnetic Bit Holder	(1)
41	48-32-1050	Insert Bit	(1)
★ 42	42-70-5080	Belt Clip	(1)
44	06-82-7212	4-20x1/4" Pan Hd. Slit. Plast. T-10	(1)
★ 45	14-20-0405	Remote Electronic Assembly	(1)
	10-98-6420	Warning Label	(1)

FIG. LUBRICATION
15 1/8 Oz. Type "E" Grease, No. 49-08-4122. Place Near Clutch Chuck in Gear Case.

FIG. NOTES
1 Torque To 18-22 In./Lbs.
21,36,37 Torque To 15-20 In./Lbs.
44 Torque To 3-5 In./Lbs.
8 Place in motor housing before inserting armature.
30,33 Press only on end with manufacturer ID.
33 Press flush to casting surface.
30 Press 11/64" from clutch face.
16,20,25 Seal towards armature.
34 Lip towards front of gear case.

MILWAUKEE ELECTRIC TOOL CORPORATION
13135 W. LISBON RD., BROOKFIELD, WI 53005