



SERVICE PARTS LIST

**BULLETIN NO.
54-42-5182**

SPECIFY CATALOG NO. AND SERIAL NO. WHEN ORDERING PARTS		REVISED BULLETIN	DATE
T.S.C. REV. DRYWALL SCREW DRIVER		54-42-5181	April '88
CATALOG NO. 6750-1	STARTING SERIAL NO. 464-240000	WIRING INSTRUCTION	
		58-01-0019	

EXAMPLE:
Component Parts (Small #)
Are Included When Ordering
The Assembly (Large #).

00 0

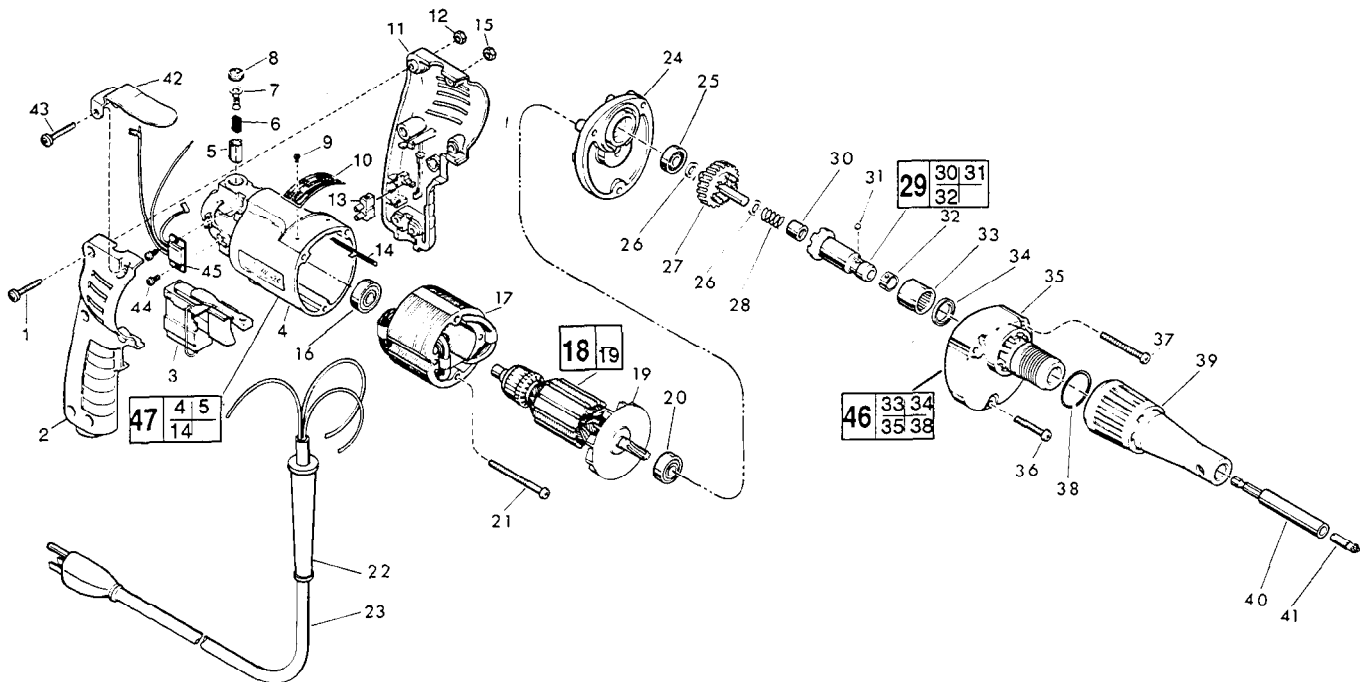


FIG.	PART NO.	DESCRIPTION OF PART	NO. REQ
★ 1	06-82-2361	8-32x15/16" Pan Hd. Slit. Torx Screw	(5)
2	31-44-1130	Right Handle Half	(1)
★ 3	23-66-1655	Speed Control Switch	(1)
★ 4	31-50-0346	Motor Housing	(1)
5	22-20-0530	Brush Tube	(2)
6	22-16-0275	Carbon Brush	(2)
7	23-52-0210	Brush Spring Assembly	(2)
8	23-44-0120	Brush Retaining Screw	(2)
9	06-85-0200	Nameplate Screw	(2)
10	12-99-0318	Nameplate Blank	(1)
11	31-44-1140	Left Handle Half	(1)
12	06-55-0835	8-32 Hex Nut	(5)
★ 13	22-56-0456	Terminal Block	(1)
14	44-60-0530	Ground Pin	(1)
★ 15	06-55-0825	8-32 Hex Nut	(1)
16	02-04-0645	Ball Bearing	(1)
17	18-10-0130	120 Volt Field	(1)
18	16-10-0605	120 Volt Armature	(1)
19	22-84-0440	Fan Assembly	(1)
20	02-04-0848	Ball Bearing	(1)
★ 21	06-82-7393	7-18x2" Pan Hd. Slit. Plast. Torx Screw	(2)
22	44-76-0130	Cord Protector	(1)
23	22-64-1120	Cord Set	(1)
24	28-28-1720	Diaphragm	(1)
25	02-04-0645	Ball Bearing	(1)
26	45-88-0712	Thrust Washer	(2)
27	32-10-1041	Clutch Gear Assembly	(1)
28	40-50-6600	Separator Spring	(1)

FIG.	PART NO.	DESCRIPTION OF PART	NO. REQ.
29	42-66-0766	Clutch Chuck Assembly	(1)
30	02-50-2400	Needle Bearing	(1)
31	02-02-0130	Steel Ball	(1)
32	40-50-0510	Bit Retaining Spring	(1)
33	02-50-4220	Needle Roller Bearing	(1)
34	45-06-0106	Oil Seal	(1)
35	28-14-1581	Gear Case	(1)
★ 36	06-82-7320	7-18x1-1/4" Pan Hd. Slit. Plast. Torx Screw	(1)
★ 37	06-82-7368	7x1-3/4" Pan Hd. Slit. Plast. Torx Screw	(2)
38	44-90-0400	Locator Ring	(1)
39	49-26-1030	Drywall Locator Assembly	(1)
40	48-32-3065	Magnetic Bit Holder	(1)
41	48-32-1050	Insert Bit	(1)
★ 42	42-70-0280	Belt Clip	(1)
★ 43	06-82-2363	8-32 x 1" Pan Hd. Slit. Torx Screw	(1)
★ 44	06-82-7212	4-20x1/4" Pan Hd. Slit. Plast. Torx Screw	(2)
★ 45	14-20-0240	Remote Electronic Assembly	(1)
46	14-30-0430	Gear Case Assembly	(1)
★ 47	14-38-0375	Motor Housing Assembly	(1)
	10-98-6420	Warning Label	(1)

FIG. LUBRICATION

35 1/8 Oz. Type "E" Grease, No. 49-08-4121. Place Near Clutch Chuck in Gear Case.

FIG. NOTES

1, 43 Torque To 14-18 In./Lbs.
21,36,37 Torque To 15-20 In./Lbs.