



SERVICE PARTS LIST

BULLETIN NO.
55-42-5158

SPECIFY CATALOG NO. AND SERIAL NO. WHEN ORDERING PARTS		REVISED BULLETIN	DATE
0-2500 RPM REV. DRYWALL SCREWDRIVER		55-42-5157	Nov. '94
CATALOG NO. 6747-4	STARTING SERIAL NO. 453B	WIRING INSTRUCTION 58-03-0023	

EXAMPLE:
Component Parts (Small #)
Are Included When Ordering
The Assembly (Large #).

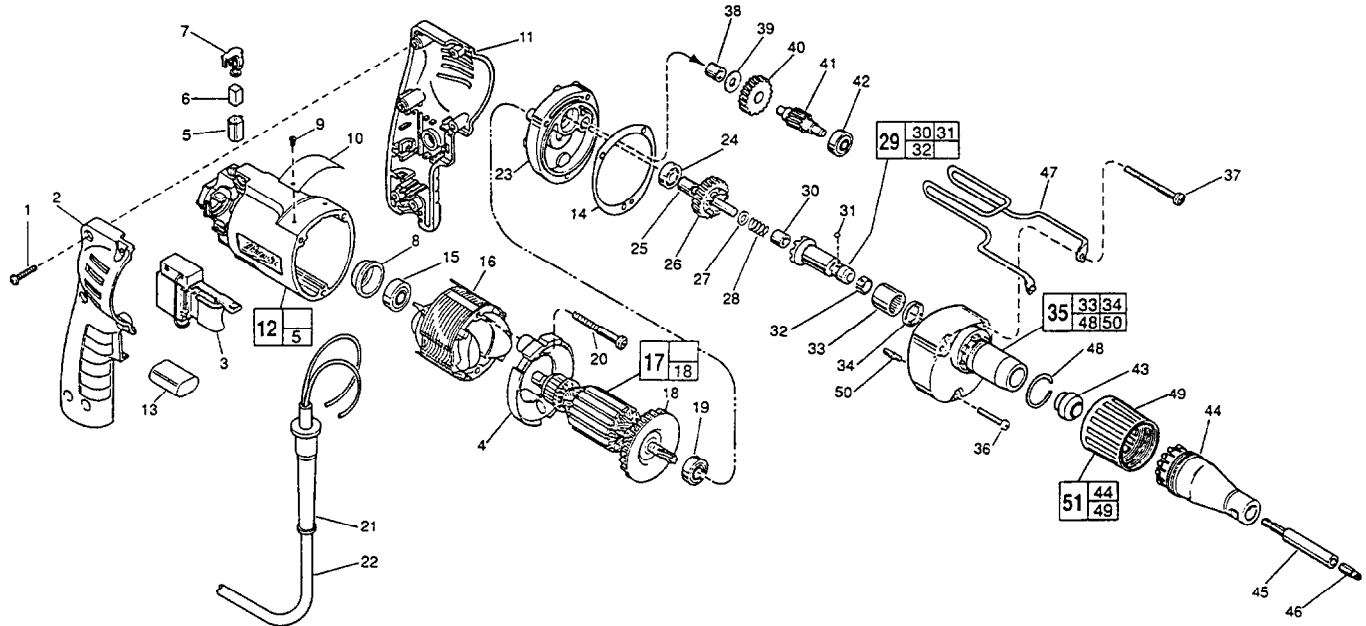


FIG.	PART NO.	DESCRIPTION OF PART	NO. REQ.	FIG.	PART NO.	DESCRIPTION OF PART	NO. REQ.
	1	06-82-7284 8-16 x 3/4" Pan Hd. Slit. Plast. T-20	(6)	35	14-30-0740	Gear Case Assembly	(1)
	2	31-44-1745 Right Handle Half	(1)	36	06-82-7344	7-18 x 1-1/2" Pan Hd. Slit. Plast. T-20	(1)
	3	23-66-2075 Speed Control Switch	(1)	37	06-82-7464	7-18 x 2-3/4" Pan Hd. Slit. Plast. T-20	(2)
	4	42-14-0380 Baffle	(1)	38	02-50-2410	Needle Bearing	(1)
	5	22-20-0830 Brush Tube	(2)	39	45-88-7990	Thrust Washer	(1)
	6	22-16-0375 Carbon Brush	(2)	40	32-40-1612	Intermediate Gear	(1)
	7	23-52-1570 Brush Spring Assembly	(2)	41	36-66-4101	Intermediate Pinion Shaft	(1)
	8	22-72-0100 Bearing Cup	(1)	42	02-04-0645	Ball Bearing	(1)
★	9	06-72-1720 Nameplate Rivet	(2)	43	30-37-0045	Guide	(1)
	10	12-99-0570 Service Nameplate	(1)	44	31-51-0090	Locator	(1)
	11	31-44-1740 Left Handle Half	(1)	45	48-32-3065	Magnetic Bit Holder	(1)
★	12	14-38-0591 Motor Housing Assembly	(1)	46	48-32-1050	#2 Insert Bit	(1)
	13	14-20-0530 Capacitor Assembly	(1)	47	42-70-5080	Belt Clip	(1)
	14	43-44-0925 Gasket	(1)	48	44-90-0401	Locator Ring	(1)
	15	02-04-0645 Ball Bearing	(1)	49	31-58-0510	Locator Sleeve	(1)
	16	18-12-0150 Field	(1)	50	06-65-0825	1/8 x 1/2 Groove Pin 5	(1)
	17	16-14-0690 Armature	(1)	51	49-26-1035	Locator Assembly	(1)
	18	22-84-0880 Fan Assembly	(1)				
	19	02-04-0851 Ball Bearing	(1)	FIG. LUBRICATION			
	20	06-82-7203 7-18 x 2-1/8" Pan Hd. Slit. Plast. T-20	(2)	35	1-1/2 Oz. Type "E" Grease, No. 49-08-4122.		
	21	44-76-0210 Cord Protector	(1)		Place Near Intermediate Shaft Ball Bearing		
	22	22-64-4480 Cord Set	(1)		In Gear Case.		
	23	28-28-1961 Diaphragm	(1)	FIG. NOTES			
	24	02-04-0645 Ball Bearing	(1)	1	Torque to 18-28 In./Lbs.		
	25	45-36-1280 Spacer	(1)	20,36, 37	Torque to 15-20 In./Lbs.		
	26	32-10-4045 Clutch Gear Assembly	(1)	8	Place in motor housing before inserting armature.		
	27	45-88-0712 Thrust Washer	(1)	30,33,38	Press only on end with manufacturer ID.		
	28	40-50-6600 Separator Spring	(1)	38	Press flush to casting surface.		
	29	42-66-0775 Clutch Chuck Assembly	(1)	30	Press 11/64" from clutch face.		
	30	02-50-2400 Needle Bearing	(1)	33	Press 13/64" from cast surface.		
	31	02-02-0130 Steel Ball	(1)	34	Spring side towards rear of gear case.		
	32	40-50-0510 Bit Retaining Spring	(1)	15,42,24	Seal towards armature.		
	33	02-50-4220 Needle Roller Bearing	(1)				
	34	45-06-0570 Oil Seal	(1)				

MILWAUKEE ELECTRIC TOOL CORPORATION
13135 W. LISBON RD., BROOKFIELD, WI 53005