



# SERVICE PARTS LIST

**BULLETIN NO.**  
**55-42-5156**

<b>SPECIFY CATALOG NO. AND SERIAL NO. WHEN ORDERING PARTS</b>		<b>REVISED BULLETIN</b>	<b>DATE</b>
<b>0-2500 RPM REV. DRYWALL SCREWDRIVER</b>		55-42-5155	Oct. '93
<b>CATALOG NO. 6747-4</b>	<b>STARTING SERIAL NO. 453A</b>	<b>WIRING INSTRUCTION</b>	
		<b>58-03-0023</b>	

**EXAMPLE:**  
Component Parts ( Small #)  
Are Included When Ordering  
The Assembly (Large #).

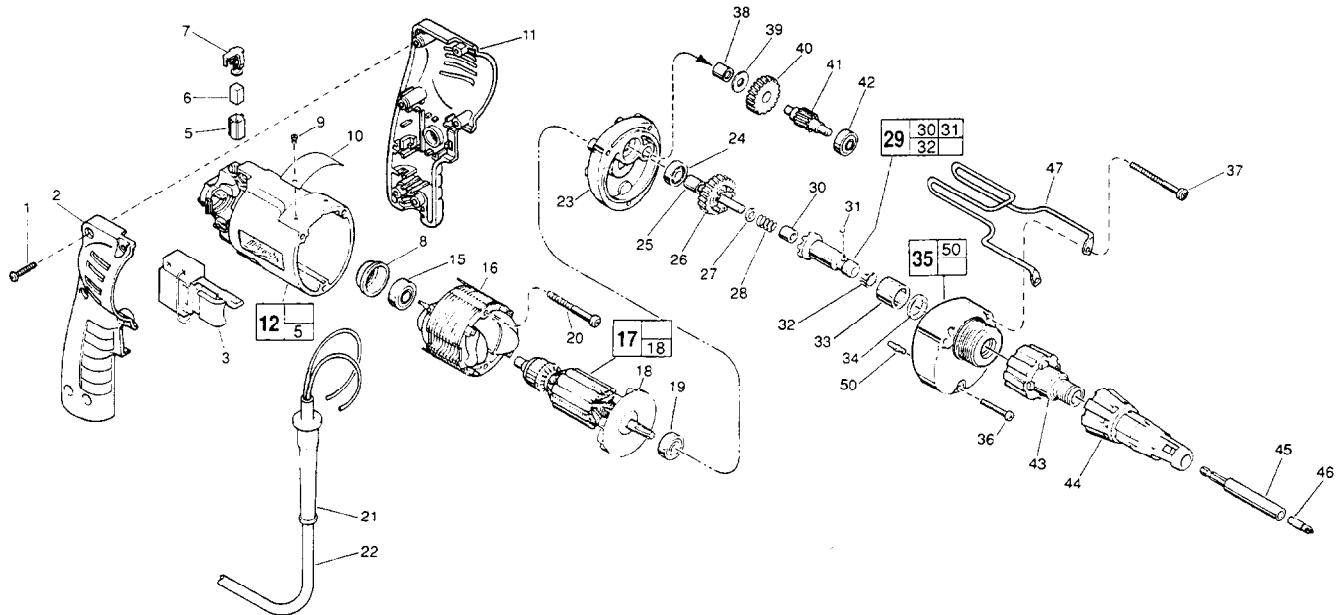


FIG. PART NO.	DESCRIPTION OF PART	NO. REQ.	FIG. PART NO.	DESCRIPTION OF PART	NO. REQ.
★ 1 06-82-7284	8-16 x 3/4" Pan Hd. Slit. Plast. T-20	(6)	35 14-30-0600	Gear Case Assembly	(1)
★ 2 31-44-1745	Right Handle Half	(1)	36 06-82-7344	7-18 x 1-1/2" Pan Hd. Slit. Plast. T-20	(1)
★ 3 23-66-2075	Speed Control Switch	(1)	★ 37 06-82-7464	7-18 x 2-3/4" Pan Hd. Slit. Plast. T-20	(2)
★ 5 22-20-0830	Brush Tube	(2)	38 02-50-2410	Needle Bearing	(1)
★ 6 22-16-0375	Carbon Brush	(2)	39 45-88-7990	Thrust Washer	(1)
★ 7 23-52-1570	Brush Spring Assembly	(2)	40 32-40-1612	Intermediate Gear	(1)
★ 8 22-72-0100	Bearing Cup	(1)	41 36-66-4101	Intermediate Pinion Shaft	(1)
9 06-85-0200	Nameplate Screw	(2)	42 02-04-0640	Ball Bearing	(1)
10 12-99-0570	Service Nameplate	(1)	43 48-32-2500	Bit Housing	(1)
★ 11 31-44-1740	Left Handle Half	(1)	44 49-26-1040	Locator Assembly	(1)
★ 12 14-38-0590	Motor Housing Assembly	(1)	45 48-32-3065	Magnetic Bit Holder	(1)
15 02-04-0645	Ball Bearing	(1)	46 48-32-1050	#2 Insert Bit	(1)
★ 16 18-12-0150	Field	(1)	★ 47 42-70-5080	Belt Clip	(1)
★ 17 16-14-0592	Armature	(1)	50 06-65-0825	1/8 x 1/2 Groove Pin 5	(1)
★ 18 22-84-0830	Fan Assembly	(1)			
19 02-04-0848	Ball Bearing	(1)			
20 06-82-7393	7-18 x 2" Pan Hd. Slit. Plast. T-20	(2)			
★ 21 44-76-0210	Cord Protector	(1)			
22 22-64-4480	Cord Set	(1)			
★ 23 28-28-1960	Diaphragm	(1)			
24 02-04-0645	Ball Bearing	(1)			
25 45-36-1280	Spacer	(1)			
26 32-10-4045	Clutch Gear Assembly	(1)			
27 45-88-0712	Thrust Washer	(1)			
28 40-50-6600	Separator Spring	(1)			
29 42-66-0766	Clutch Chuck Assembly	(1)			
30 02-50-2400	Needle Bearing	(1)			
31 02-02-0130	Steel Ball	(1)			
32 40-50-0510	Bit Retaining Spring	(1)			
33 02-50-4220	Needle Roller Bearing	(1)			
34 45-06-0106	Oil Seal	(1)			

**FIG. LUBRICATION**  
35 1-1/2 Oz. Type "E" Grease, No. 49-08-4122.  
Place Near Intermediate Shaft Ball Bearing  
in Gear Case.

**FIG. NOTES**  
1 Torque to 18-22In./Lbs.  
20,36, 37 Torque to 15-20 In./Lbs.  
8 Place in motor housing before inserting armature.  
30,33 Press only on end with manufacturer ID.  
33,38 Press flush to casting surface.  
30 Press 11/64" from clutch face.  
34 Lip towards front of gear case.  
15,19,24 Seal towards armature.