



SERVICE PARTS LIST

BULLETIN NO.
54-42-5154

SPECIFY CATALOG NO. AND SERIAL NO. WHEN ORDERING PARTS		REVISED BULLETIN 54-42-5153	DATE April '85
SINGLE SPEED REV. DRYWALL SCREW DRIVER		WIRING INSTRUCTION 58-01-0653	
CATALOG NO. 6747-1	STARTING SERIAL NO. 453-84000		
CAT. NO. 6747-6	START SER. NO. 453-84000	BILINGUAL LABEL 10-98-6405	

FOR CAT. NO. 6747-3 (240V) TOOL USE:
 22-64-4200 CORD SET
 22-18-0376 CARBON BRUSH
 18-16-0015 FIELD
 16-16-0400 ARMATURE

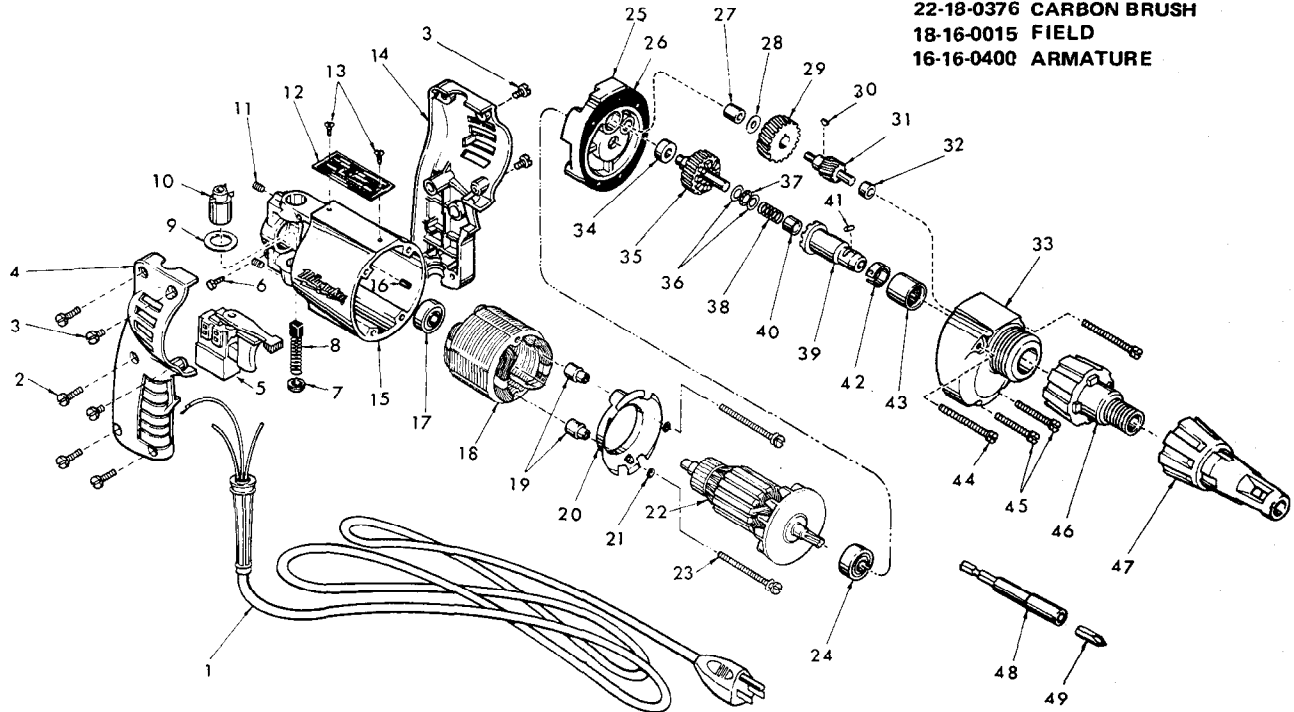


FIG.	PART NO.	DESCRIPTION OF PART	NO. REQ.	FIG.	PART NO.	DESCRIPTION OF PART	NO. REQ.
	1	22-64-0665 Cord Set	(1)	26	43-44-0280	Gasket	(1)
★	2	06-95-0220 8-18x3/4 Thread Form Screw	(4)	27	02-50-1210	Needle Bearing	(1)
★	3	06-95-0209 8-32x3/8 Taptite Screw	(4)	28	45-88-7280	Nylon Thrust Washer	(1)
★	4	31-44-1360 R.H. Handle Half	(1)	29	32-40-1611	Intermediate Gear	(1)
	5	23-66-0816 Double Pole Rev. Switch	(1)	30	06-42-0400	Woodruff Key	(1)
	6	06-81-8625 6-32x1/4 Ground Screw	(1)	31	36-66-4100	Intermediate Pinion Shaft	(1)
	7	23-44-0020 Brush Retaining Screw	(2)	32	02-50-1635	Needle Bearing	(1)
	8	22-18-0362 Carbon Brush	(2)	33	28-14-1210	Gear Case (Includes 06-65-0825 Groove Pin)	(1)
	9	23-86-0105 Washer	(2)	34	02-08-0210	Ball Bearing	(1)
	10	22-22-1251 Brush Holder Assy.	(2)	35	32-10-2500	Clutch Gear	(1)
	11	06-83-2430 10-32x1/4 Hds. Skt. Screw	(2)	36	45-88-0550	Thrust Washer	(2)
★	12	12-99-0019 Nameplate	(1)	37	02-80-0100	Thrust Bearing	(1)
	13	06-85-0200 6x1/4 Round Hd. Type Z Screw	(2)	38	40-50-6600	Separator Spring	(1)
★	14	31-44-1355 L.H. Handle Half	(1)	39	42-66-0751	Drive Chuck (Includes Figs. 40 thru 42)	(1)
★	15	28-50-6096 Motor Housing (Includes Fig. 16)	(1)	40	02-50-1610	Needle Bearing	(1)
	16	45-30-0120 Ball Bearing Retaining Slug	(1)	41	02-55-0150	Loose Roller Bearing	(1)
	17	02-04-0740 Ball Bearing	(1)	42	40-50-1450	Bit Retaining Spring	(1)
	18	18-10-0025 120 V. Field	(1)	43	02-50-4050	Needle Bearing	(1)
	19	45-36-0601 Baffle Spacer	(2)	44	06-81-6740	8-32x2 Fil. Hd. Sem	(2)
	20	31-05-0010 Baffle	(1)	45	06-81-6550	8-32x1-1/2 Fil. Hd. Sem	(2)
	21	45-88-7170 Washer	(2)	46	48-32-2500	Bit Housing	(1)
	22	16-10-0590 120 V. Armature	(1)	47	49-26-1000	Drywall Locator	(1)
	23	06-81-8695 6-32x2-7/16 Fil. Hd. Sems	(2)	48	48-32-3025	1/4 Hex Magnetic Bit Holder	(1)
	24	02-04-0880 Ball Bearing	(1)	49	48-32-1050	1/4 Hex No. 2 Phillips Insert Bit	(1)
	25	28-28-1451 Diaphragm	(1)	★ 50	10-98-5986	Warning Label (Not Shown) Omit For Canadian Tools	(1)