



SERVICE PARTS LIST

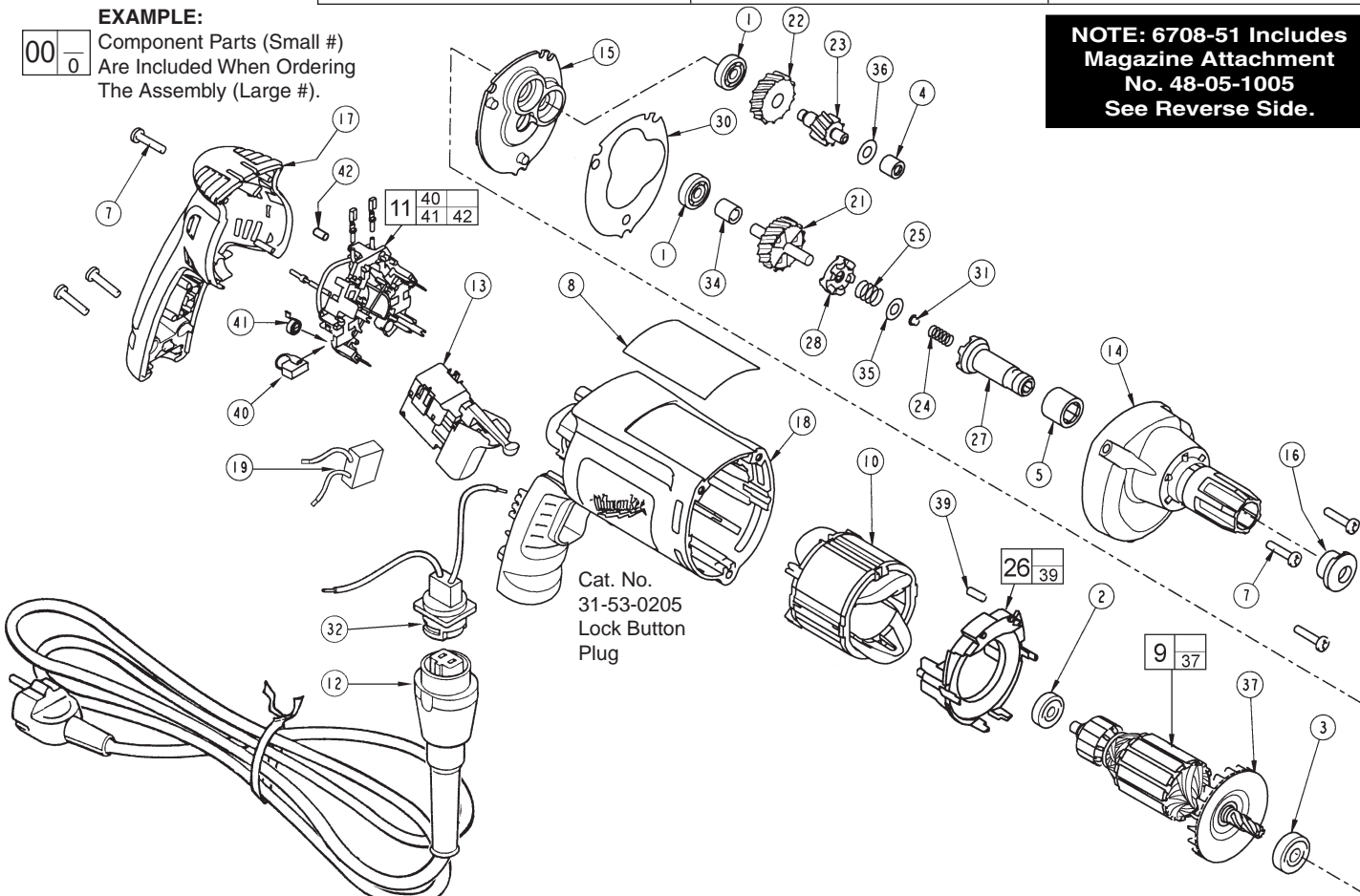
BULLETIN NO.
55-42-6125

SPECIFY CATALOG NO. AND SERIAL NO. WHEN ORDERING PARTS		REVISED BULLETIN	DATE
44.5mm-76mm SHARPFIRE			Feb. 2007
CATALOG NO.	6708-51	STARTING SERIAL NO.	132A
		WIRING INSTRUCTION	58-03-1805

EXAMPLE:

00	0
----	---

 Component Parts (Small #)
Are Included When Ordering
The Assembly (Large #).



NOTE: 6708-51 Includes Magazine Attachment No. 48-05-1005 See Reverse Side.

FIG.	PART NO.	DESCRIPTION OF PART	NO. REQ.
1	02-04-0640	Ball Bearing	(2)
2	02-04-0645	Ball Bearing	(1)
3	02-04-0852	Ball Bearing	(1)
4	02-50-2400	Needle Bearing	(1)
5	02-50-3245	Needle Bearing	(1)
7	06-82-7275	7-18 x 3/4 Slotted Plastite Torx T-20	(6)
8	12-99-2710	Service Nameplate	(1)
9	16-14-2205	Armature	(1)
10	18-04-2200	Field	(1)
11	22-18-1220	Brush Card Assembly	(1)
12	48-76-5012	Quik-Lok Cord Set	(1)
12	22-64-0684	Quik-Lok Cord Set (Australia)	(1)
13	23-66-2135	Switch	(1)
14	28-14-2380	Gearcase	(1)
15	28-28-2315	Diaphragm	(1)
16	30-37-0046	Drywall Nose Guide	(1)
17	31-15-2030	Handle Halve	(1)
18	31-50-2030	Motor Housing	(1)
19	22-33-0550	Suppressor	(1)
21	32-10-0525	Clutch Gear Assembly	(1)
22	32-40-0100	Intermediate Gear	(1)
23	36-66-0120	Intermediate Shaft	(1)
24	40-50-0095	Separator Spring	(1)
25	40-50-8515	Bias Spring	(1)
26	42-14-0460	Baffle Assembly	(1)
27	42-66-0715	Clutch Chuck Assembly	(1)
28	42-70-0310	Drive Shaft	(1)
30	43-44-0985	Gasket	(1)
31	44-60-0505	Thrust Pin	(1)
32	22-56-1015	Blade Housing Assembly	(1)
34	45-36-1280	Spacer	(1)
35	45-88-0555	Clutch Thrust Washer	(1)

FIG.	PART NO.	DESCRIPTION OF PART	NO. REQ.
36	45-88-7990	Thrust Washer	(1)
37	22-84-0845	Fan Assembly	(1)
39	45-30-0030	Slug	(2)
40	22-18-1320	Brush Assembly	(2)
41	23-52-1610	Brush Spring	(2)
42	45-30-0035	Slug	(1)

FIG. LUBRICATION:

21,25 Place .02 oz. (.5 grams) of type "Y" grease, No 49-08-5270, on bias spring. Place .02 oz. (.5 grams) total of grease in the clutch pockets of clutch gear.

14 Place .11 oz. (3.1 grams) of type "Y" grease on top of the inserted intermediate needle bearing. After inserting the pinion assembly, place .48 oz. (13.6 grams) of grease at the armature pinion location in the gearcase pocket and push down .20".

14,15 Apply a light film of type "Y" grease to needle and ball bearing pockets in diaphragm and gearcase prior to pressing bearings in.

24,31 Place .02 oz. (.5 grams) of type "Y" grease to clutch thrust washer, thrust pin and separator spring during assembly.

FIG. NOTES:

4 Needle bearings to be pressed flush to .010 under flush, from end which has the vendor identification.

5 Needle bearing to have it's seal toward the front of the tool. Needle bearing to be pressed .133/.143 under flush.

MILWAUKEE ELECTRIC TOOL CORPORATION
13135 W. LISBON RD., BROOKFIELD, WI 53005
Drwg. 3

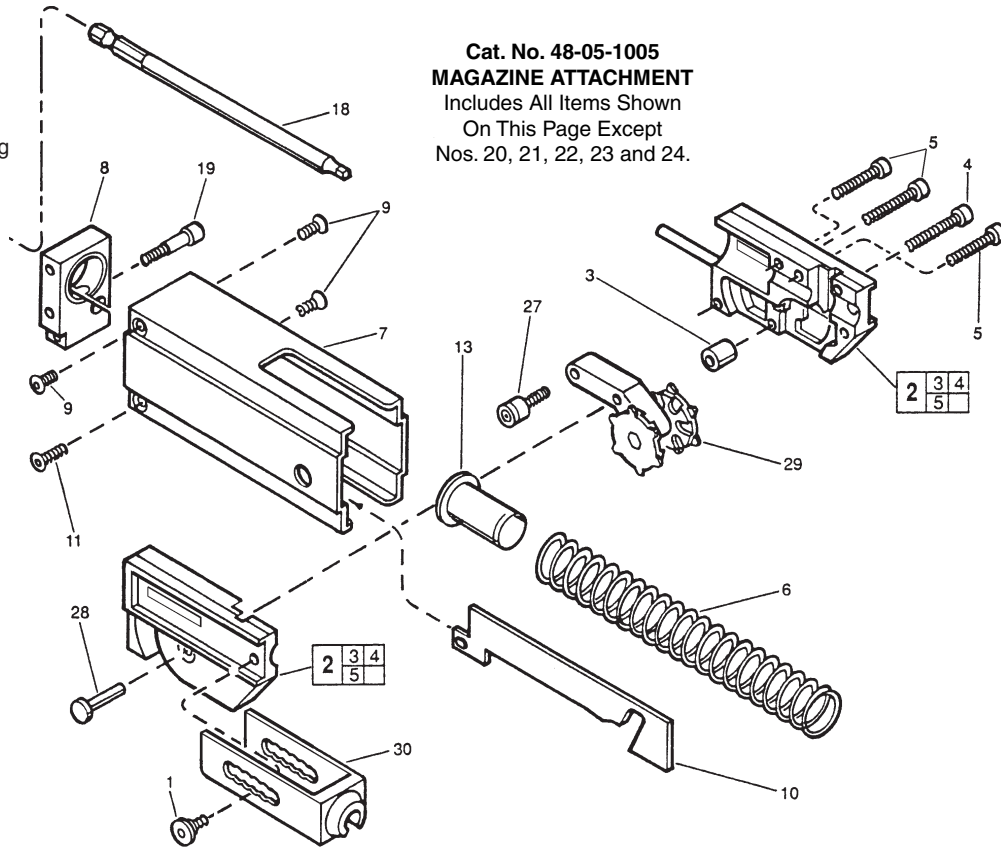
SCREW-SHOOTER MAGAZINE ATTACHMENT

CATALOG NO. 48-05-1005 DATE CODE 001088



EXAMPLE:

Component Parts (Small #)
Are Included When Ordering
The Assembly (Large #).



**Cat. No. 48-05-1005
MAGAZINE ATTACHMENT**

Includes All Items Shown
On This Page Except
Nos. 20, 21, 22, 23 and 24.

FIG.	PART NO.	DESCRIPTION OF PART	NO. REQ.
1	06-81-1700	M5 x 0.8 x 5. lg, 3mm Skt. Hd. Sld. Sc.	2
2	43-56-0315	Gliding Assembly (Incl. 3,4,5)	1
3	42-40-0001	Distance Bearing Bushing	1
4	06-95-1000	M3.5 x 22. lg, Phillips Pan Hd. Plast. Sc.	2
5	06-95-1005	M3.5 x 24. lg, Phillips Pan Hd. Plast. Sc.	2
6	40-50-0406	Spring (Green or Yellow)	1
7	43-76-0052	Housing	1
8	44-66-1500	Mounting Plate	1
9	06-81-2000	M4 x 0.7 x 8. lg, 2.5mm Skt. Hd. Flat Sc.	3
10	44-66-0306	Curve Plate	1
11	06-81-2005	M4 x 0.7 x 10. lg, 2.5mm Skt. Hd. Flat Sc.	1
13	43-56-0300	Spring Guide	1
18	48-30-1527	140mm #2 Square Bit	1
18A	48-30-1527	140mm #2 Phillips Bit (Not Shown)	1
19	06-81-2010	M5 x 0.8 x 25. lg, 4mm Skt. Hd. Sld. Sc.	1
27	06-81-2025	M5 x 0.8, 3mm Socket Hd. Roller Screw	1
28	44-60-1520	Pivot Pin	1
29	42-74-0095	Gear Wheel Unit	1
30	43-46-0208	Depth Control, 1-1/4" to 3"	1
	49-96-4800	Hex Key Set-2, 2.5, 3 & 4mm (Not Shown)	1
	10-15-6100	Depth Label (Not Shown)	1
	12-25-1470	Warning Label (Not Shown)	1

FIG. NOTES:

9,11 Use Loctite 272 on screws.

Cat. No. 14-46-0906

**2 BEND BELT
GUIDE ASSEMBLY**

(Not Included With
48-05-1005 Screw-Shooter
Magazine Attachment)

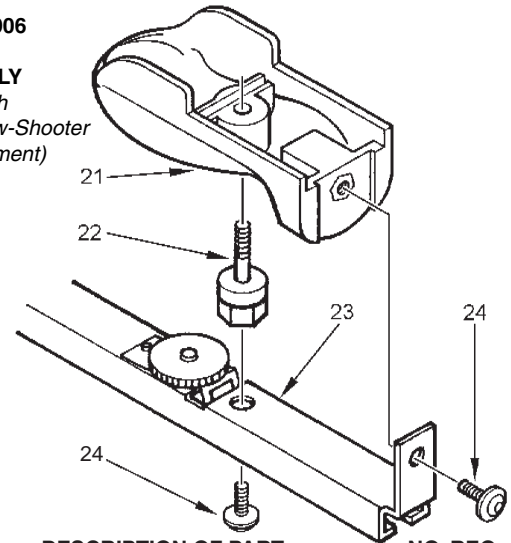


FIG.	PART NO.	DESCRIPTION OF PART	NO. REQ.
	21	43-62-1230 Handle	1
	22	06-75-0400 Shoulder Bolt	1
	23	2 Bend Belt Guide	1
★	24	Screws	2

For Short Configuration (No Extension)

The Following Parts Are Required:

14-46-0906	2 Bend Belt Guide Assembly	1
43-76-0296	Adapter Assembly	1
43-72-0010	Bit Holder	1

NOTE: Parts For Short Configuration Are Not Included With
48-05-1005 Screw-Shooter Magazine Attachment.