



SERVICE PARTS LIST

BULLETIN NO.
54-42-6126

SPECIFY CATALOG NO. AND SERIAL NO. WHEN ORDERING PARTS		REVISED BULLETIN 54-42-6125	DATE Feb. 2007
1-1/4"-3" SHARPFIRE			
CATALOG NO.	6708-20	STARTING SERIAL NO.	132B
		WIRING INSTRUCTION 58-01-1805	

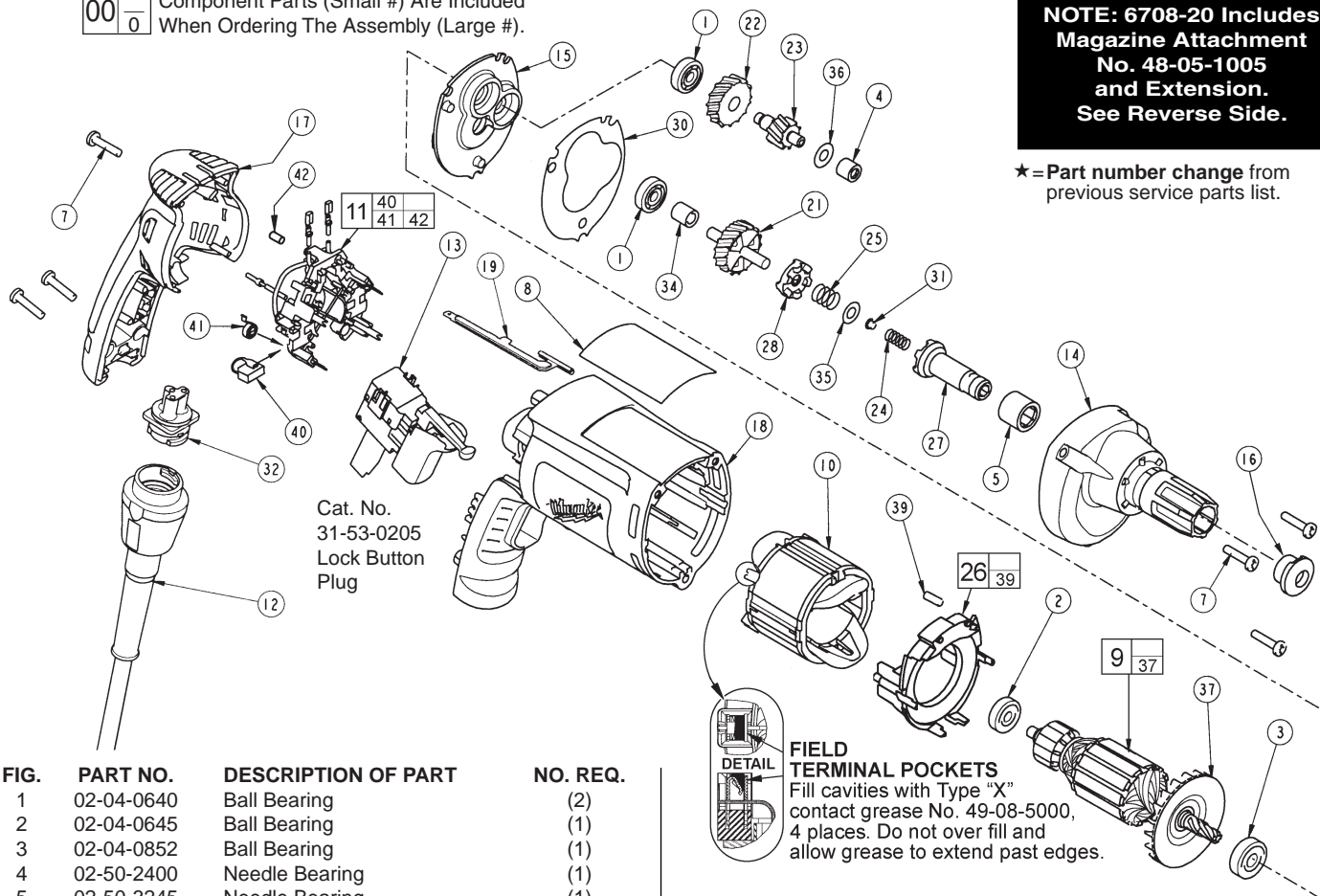
EXAMPLE:

00
0

 Component Parts (Small #) Are Included
 When Ordering The Assembly (Large #).

NOTE: 6708-20 Includes Magazine Attachment No. 48-05-1005 and Extension. See Reverse Side.

★ = Part number change from previous service parts list.



Cat. No.
31-53-0205
Lock Button
Plug

FIELD TERMINAL POKETS

Fill cavities with Type "X" contact grease No. 49-08-5000, 4 places. Do not over fill and allow grease to extend past edges.

FIG.	PART NO.	DESCRIPTION OF PART	NO. REQ.
1	02-04-0640	Ball Bearing	(2)
2	02-04-0645	Ball Bearing	(1)
3	02-04-0852	Ball Bearing	(1)
4	02-50-2400	Needle Bearing	(1)
5	02-50-3245	Needle Bearing	(1)
7	06-82-7275	7-18 x 3/4 Slotted Plastite Torx T-20	(6)
8	12-99-2565	Service Nameplate	(1)
9	16-10-2205	Armature	(1)
10	18-07-2200	Field	(1)
11	22-18-1210	Brush Card Assembly	(1)
12	48-76-4008	Quik-Lok Cord Set	(1)
13	23-66-2585	Switch	(1)
14	28-14-2380	Gearcase	(1)
15	28-28-2315	Diaphragm	(1)
16	30-37-0046	Drywall Nose Guide	(1)
17	31-15-2030	Handle Halve	(1)
18	31-50-2030	Motor Housing	(1)
19	44-60-1700	Ground Pin	(1)
21	32-10-0525	Clutch Gear Assembly	(1)
22	32-40-0100	Intermediate Gear	(1)
23	36-66-0120	Intermediate Shaft	(1)
24	40-50-0095	Separator Spring	(1)
25	40-50-8515	Bias Spring	(1)
26	42-14-0460	Baffle Assembly	(1)
27	42-66-0715	Clutch Chuck Assembly	(1)
28	42-70-0310	Drive Clutch	(1)
30	43-44-0985	Gasket	(1)
31	44-60-0505	Thrust Pin	(1)
32	22-56-1010	Pin Housing Assembly	(1)
34	45-36-1280	Spacer	(1)
35	45-88-0555	Clutch Thrust Washer	(1)
36	45-88-7990	Thrust Washer	(1)
37	22-84-0845	Fan Assembly	(1)
39	45-30-0030	Slug	(2)
40	22-18-1310	Brush Assembly	(2)
41	23-52-1610	Brush Spring	(2)
42	45-30-0035	Slug	(1)

LUBRICATION (Type "Y" Grease, No. 49-08-5270)

- Fill the 3 enlarged clutch pockets of the clutch gear assembly (21) with .5 gm. (.02 oz.) grease.
- Apply the same amount of grease in the bias spring (25).
- Apply in total .5 gm. (.02 oz.) grease to the clutch thrust washer (35), thrust pin (31) and separator spring (24).
- Place 3.6 gm. (.13 oz.) of grease on top of the inserted intermediate needle bearing (4).
- Place 13 gm. (.46 oz.) of grease at the armature pin location in the gearcase (14) and fill to slightly above the intermediate gear (22).
- Apply a light film of grease to the lead chamfer of the clutch chuck (27) prior to assembly.

Before assembly, lightly coat all press fit areas with lightweight spindle oil.

FIG. NOTES:

- 4 Needle bearings to be pressed flush to .010 under flush, from end which has the vendor identification.
- 5 Needle bearing to have it's seal toward the front of the tool. Needle bearing to be pressed .133/.143 under flush.

Cat. No. 48-05-1005 MAGAZINE ATTACHMENT

Date Code: 011901022

NOTE: Some units may have Housings (7) AND Curve Plates (10) that have a small tapped hole in the front, as shown. If so, use screw (31). Parts with and without the hole are interchangeable. If EITHER part DOES NOT have that hole, disregard screw (31).

FIG.	PART NO.	DESCRIPTION OF PART	NO. REQ.
1	06-81-1700	M5 x 0.8 x 5. lg, 3mm Skt. Hd. Slid. Sc.	2
★ 2	43-56-0315	Gliding Assembly (Incl. 3,4,5)	1
3	42-40-0001	Distance Bearing Bushing	1
★ 4	06-95-1000	M3.5 x 22. lg, Phillips Pan Hd. Plast. Sc.	1
★ 5	06-95-1005	M3.5 x 24. lg, Phillips Pan Hd. Plast. Sc.	3
6	40-50-0406	Spring (Green or Yellow)	1
7	43-76-0052	Housing	1
8	44-66-1500	Mounting Plate	1
9	06-81-2000	M4 x 0.7 x 8. lg, 2.5mm Skt. Hd. Flat Sc.	3
10	44-66-0306	Curve Plate	1
11	06-81-2005	M4 x 0.7 x 10. lg, 2.5mm Skt. Hd. Flat Sc.	1
13	43-56-0300	Spring Guide	1
★ 18	48-30-1527	140mm #2 Square Bit	1
★ 18A	48-30-1528	140mm #2 Phillips Bit	1
19	06-81-2010	M5 x 0.8 x 25. lg, 4mm Skt. Hd. Slid. Sc.	1
27	06-81-2025	M5 x 0.8, 3mm Socket Hd. Roller Screw	1
28	44-60-1520	Pivot Pin	1
29	42-74-0095	Gear Wheel Unit	1
★ 30	43-46-0208	Depth Control, 1-1/4" to 3"	1
★ 31	06-81-2045	M4 x 0.6mm x 2.5mm Skt. Hd. Cap Scr.	1
	49-96-4800	Hex Key Set-2, 2.5, 3 & 4mm (Not Shown)	1
	10-15-6100	Depth Label (Not Shown)	1
	12-25-1470	Warning Label (Not Shown)	1

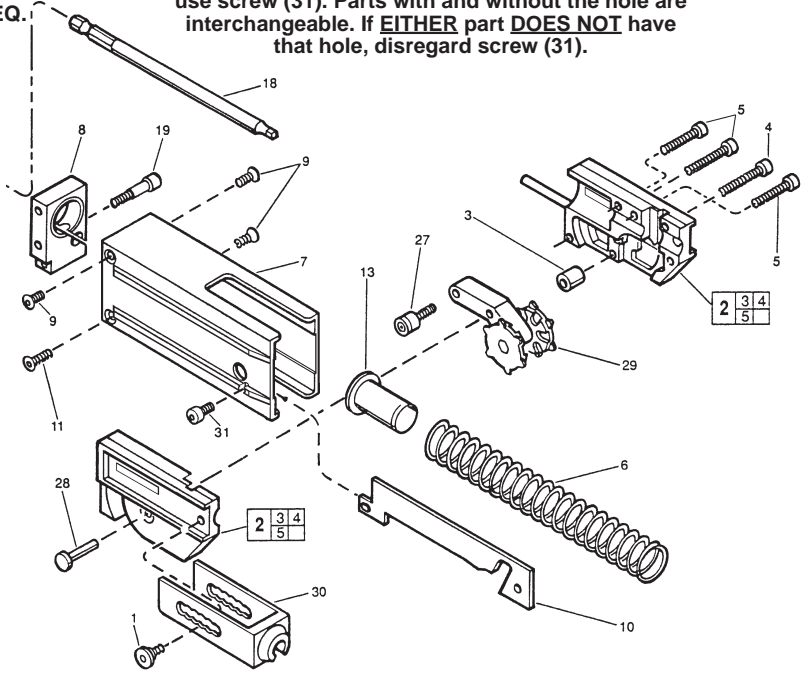


FIG. NOTES:

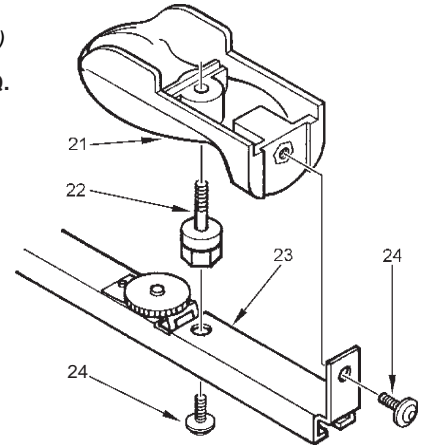
9,11 Use Loctite 272 on screws.

***Cat. No. 14-46-0906 2 BEND BELT GUIDE ASSEMBLY**

(Not Included With 48-05-1005 Screw-Shooter Magazine Attachment)

★ = Part number change from previous service parts list.

FIG.	PART NO.	DESCRIPTION OF PART	NO. REQ.
21	43-62-1230	Handle	1
★ 22	06-75-0400	Shoulder Bolt	1
23	-----	2 Bend Belt Guide	1
★ 24	-----	Screws	2

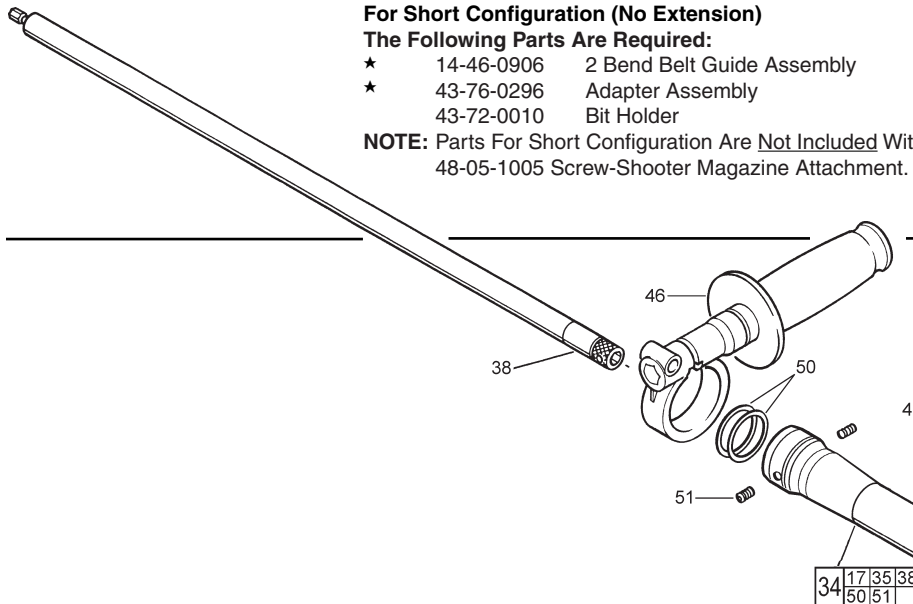


For Short Configuration (No Extension)

The Following Parts Are Required:

★	14-46-0906	2 Bend Belt Guide Assembly	1
★	43-76-0296	Adapter Assembly	1
	43-72-0010	Bit Holder	1

NOTE: Parts For Short Configuration Are Not Included With 48-05-1005 Screw-Shooter Magazine Attachment.



20.5" EXTENSION PARTS

FIG.	PART NO.	DESCRIPTION OF PART	NO. REQ.
17	44-40-0575	Stop Nut	2
★ 34	14-38-0677	Extension Tube & Shaft Subassy (Incl. 17,35,38,50,51)	1
★ 35	45-76-0307	Extension Tube	1
38	45-08-0026	Extension Drive Shaft	1
39	14-38-0685	Screw Guide Subassembly (Incl. 40,41,42,43,44)	1
40	-----	Screw Guide	1
★ 41	-----	Screw	1
42	43-56-0330	Slotted Guide Screw	1
43	06-81-2040	M4 x 0.7 x 25. lg, 3mm Socket Hd. Screw	2
44	-----	Clamp	1
★ 46	14-34-0506	Side Handle Subassembly	1
50	34-40-0700	30 x 25 x 2.5mm O-Ring	2
51	06-83-1400	M6 x 1.0 x 6 lg, 3mm Socket Hd. Set Screw	2

