



SERVICE PARTS LIST

BULLETIN NO.
54-42-5775

SPECIFY CATALOG NO. AND SERIAL NO. WHEN ORDERING PARTS		REVISED BULLETIN	DATE
SNAP ACTION CLUTCH POWER UNIT			Apr. '97
CATALOG NO. 6700-20	STARTING SERIAL NO. 959A	WIRING INSTRUCTION 58-01-0031	

EXAMPLE:
Component Parts (Small #) Are Included
When Ordering The Assembly (Large #).

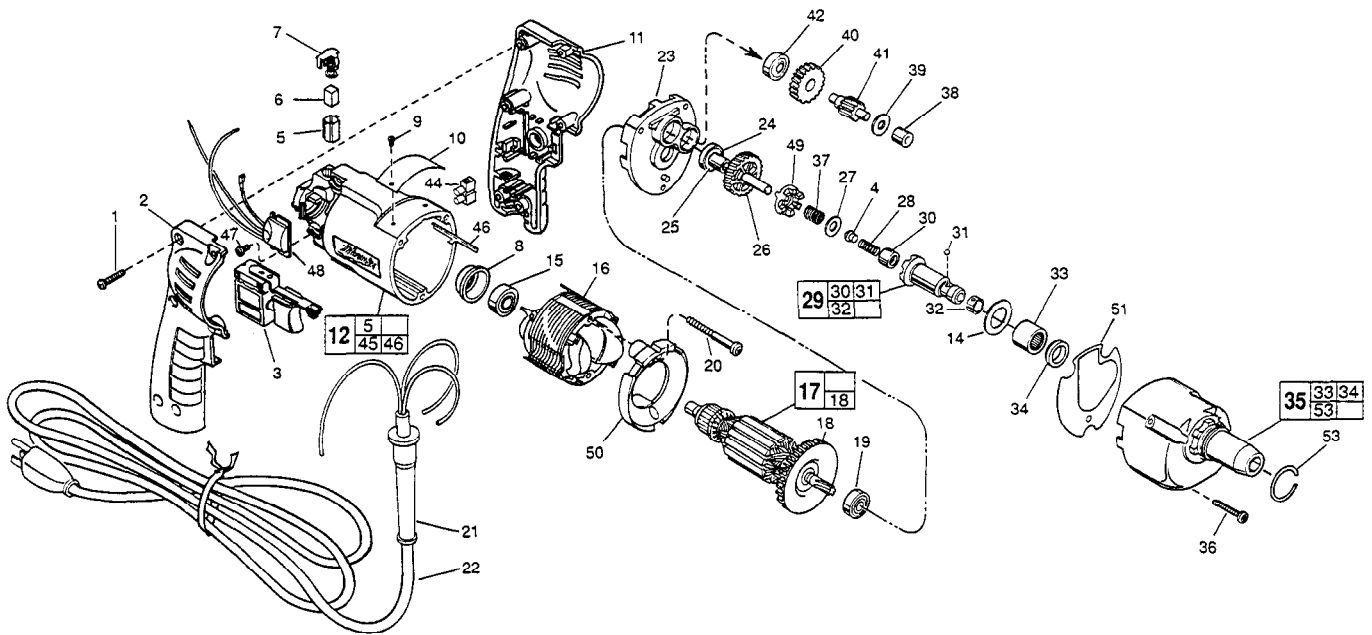


FIG.	PART NO.	DESCRIPTION OF PART	NO. REQ.
1	06-82-7284	8-16 x 3/4" Pan Hd. Slit. Plast. T-20	(6)
2	31-44-1745	Right Handle Half	(1)
3	23-66-2145	Speed Control Switch	(1)
4	44-60-0505	Thrust Pin	(1)
5	22-20-0830	Brush Tube	(2)
6	22-16-0275	Carbon Brush	(2)
7	23-52-1570	Brush Spring Assembly	(2)
8	22-72-0100	Bearing Cup	(1)
9	06-72-1720	Nameplate Rivet	(2)
10	12-99-0850	Service Nameplate	(1)
11	31-44-1740	Left Handle Half	(1)
12	14-38-0601	Motor Housing Assembly	(1)
14	45-88-8350	Stop Washer	(1)
15	02-04-0645	Ball Bearing	(1)
16	18-11-0150	120 Volt Field	(1)
17	16-10-0700	120 Volt Armature	(1)
18	22-84-0880	Fan Assembly	(1)
19	02-04-0851	Ball Bearing	(1)
20	06-82-7203	7-18 x 2-1/8" Pan Hd. Slit. Plast. T-20	(2)
21	44-76-0210	Cord Protector	(1)
22	22-64-3181	Cord Set	(1)
23	28-28-2310	Diaphragm	(1)
24	02-04-0645	Ball Bearing	(1)
25	45-36-1280	Spacer	(1)
26	32-10-4060	Clutch Gear Assembly	(1)
27	45-88-0555	Thrust Washer	(1)
28	40-50-0095	Separator Spring	(1)
29	42-66-0710	Clutch Chuck Assembly	(1)
30	02-50-2400	Needle Bearing	(1)
31	02-02-0130	Steel Ball	(1)
32	40-50-0510	Bit Retaining Spring	(1)
33	02-50-4220	Needle Roller Bearing	(1)
34	45-06-0570	Oil Seal	(1)
35	14-30-0745	Gear Case Assembly	(1)
36	06-82-7344	7-18 x 1-1/2" Pan Hd. Slit. Plast. T-20	(3)
37	40-50-8515	Bias Spring	(1)
38	02-50-2400	Needle Bearing	(1)
39	45-88-7990	Thrust Washer	(1)
40	32-40-1614	Intermediate Gear	(1)
41	36-66-9680	Intermediate Pinion Shaft	(1)
42	02-04-0645	Ball Bearing	(1)
44	22-56-0456	Terminal Block	(1)

FIG.	PART NO.	DESCRIPTION OF PART	NO. REQ.
45	23-94-6225	Ground Wire Assembly (Not Shown)	(1)
46	44-60-0530	Ground Pin	(1)
47	06-82-7212	4-20 x 1/4" Pan Hd. Slit. Plast. T-10	(1)
48	14-20-0750	Remote Electronic Assembly	(1)
49	42-70-0310	Drive Clutch	(1)
50	42-14-0380	Baffle	(1)
51	43-44-4010	Gasket	(1)
53	44-90-0401	Locator Ring	(1)

FIG. LUBRICATION
17,26,37 1/64 Oz. Type "E" Grease, No. 49-08-4122, On Bias Spring.
1/64 Oz. In The Clutch Pockets Of The Clutch Gear.
1/64 Oz. On Each Side Of Armature Pinion At Clutch Gear.
35 7/8 Oz. In Pinion Pocket Of Gear Case, Near Intermediate Shaft Needle Bearing In Gear Case.

Apply A Light Film Of "E" Grease To Ball And Needle Bearing Pockets Of The Diaphragm And Gear Case Prior To Pressing Bearings. Apply A Light Film Of "E" Grease To The Lead Chamfer Of Clutch Chuck, Thrust Pin And Separator Spring Prior To Assembly.

FIG. NOTES
1 Torque to 18-28 In./Lbs.
20,36 Torque to 15-20 In./Lbs.
47 Torque to 3-5 In./Lbs.
8 Place in motor housing before inserting armature.
30,33,38 Press only on end with manufacturer ID.
33,38 Press flush to casting surface.
34 Spring side towards rear of gear case.
15 Seal towards armature.
24,42 Seal Away From Armature

MILWAUKEE ELECTRIC TOOL CORPORATION
13135 W. LISBON RD., BROOKFIELD, WI 53005