



# SERVICE PARTS LIST

**BUL. 54-42-4053**

## POSITIVE DRIVE SCREWDRIVER

REVISED BUL 54-42-4052 DATE Aug. 71

**Catalog No. 6620-1**

Starting Serial No. **135-1825**

WIRING INSTR. **58-01-0211**

Both Model and Serial No. must be furnished to obtain correct parts.

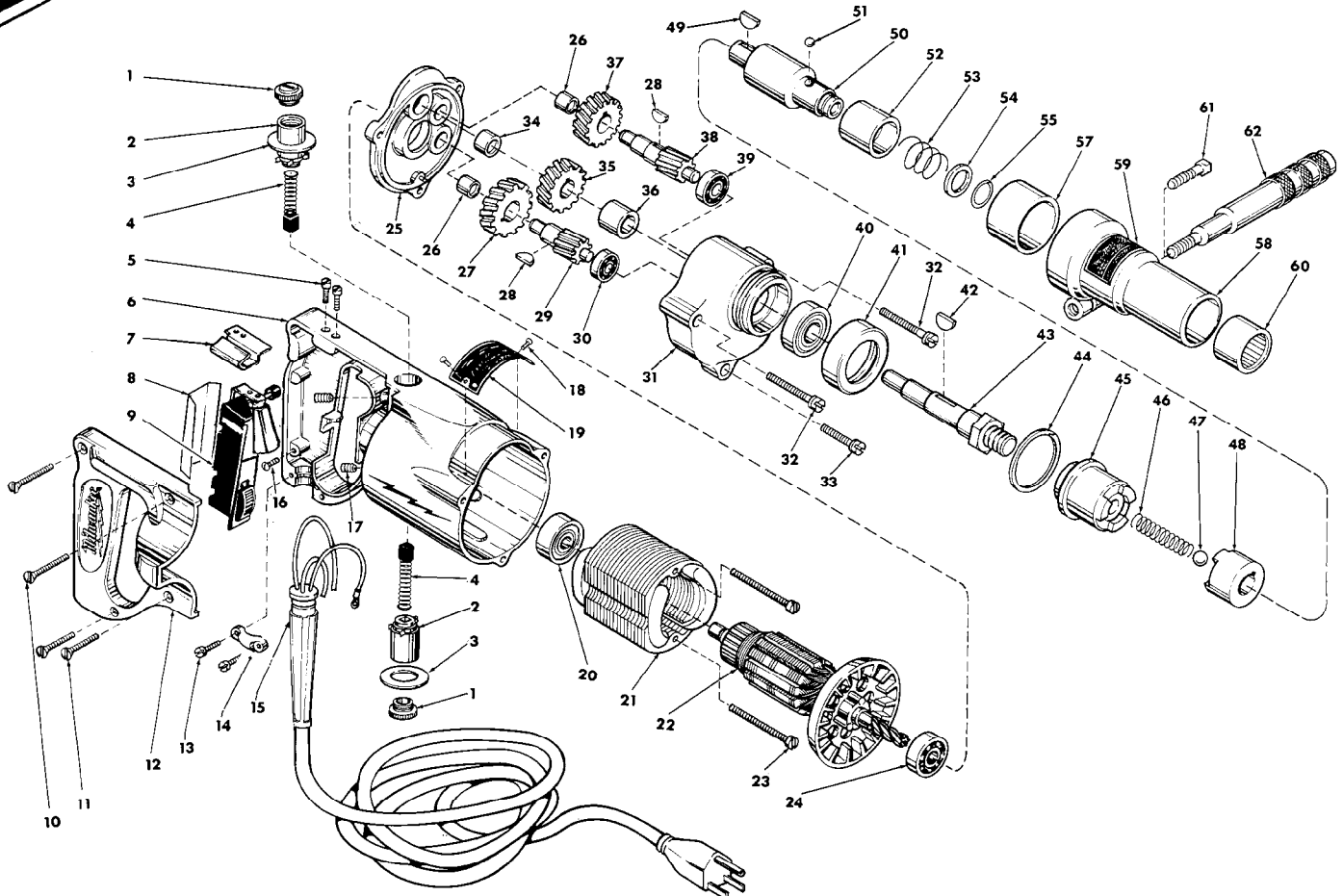


FIG.	PART NO.	DESCRIPTION OF PART	NO.REQ.
1	23-44-0060	Brush Retaining Screw	(2)
2	22-22-0080	Brush Holder	(2)
3	23-86-0110	Washer	(2)
4	22-18-0100	Carbon Brush	(2)
5	06-81-5800	6-32x5/16 Fil.Hd. Sem	(2)
6	28-50-4488	Motor Housing (Includes Fig. Nos. 10, 11 and 12)	
7	42-68-0225	Wire Clamp	
★ 8	23-16-0660	Switch Insulator	
★ 9	23-66-0487	Reversing Switch	
10	06-81-3750	8-32x1 Oval Hd. Screw	(2)
11	06-81-3700	8-32x7/8 Oval Hd. Screw	(2)
12	28-20-3601	Handle Cover	
13	06-81-6150	8-32x1/2 Fil.Hd. Sem	(2)
14	28-17-0400	Clamp Strap	
15	22-64-0380	Cord Set	
16	06-81-8625	6-32x1/4 Ground Screw	
17	06-83-2650	1/4-20x3/8 Knrl. Set Screw	(2)
★ 18	06-85-0200	6x1/4 Rd. Hd.T type Z Screw	(2)
19	12-98-0800	Nameplate	
20	02-04-0970	Ball Bearing	
21	18-42-1141	115 Volt Rev. Field	
22	16-42-1210	115 Volt Armature	
23	06-81-6600	8-32x1-3/4 Fil.Hd. Sem	(2)
24	02-04-0940	Ball Bearing	
25	28-28-0661	Diaphragm	
26	02-50-1640	Needle Bearing	(2)
27	32-40-1241	Intermediate Gear	
28	06-42-0800	Woodruff Key	(2)
29	36-66-2801	Intermediate Shaft	
30	02-04-0640	Ball Bearing	
31	28-14-1261	Gear Case	

FIG.	PART NO.	DESCRIPTION OF PART	NO.REQ.
32	06-81-6650	8-32x1-3/4 Fil.Hd. Sem	(2)
33	06-81-6350	8-32x1 Fil.Hd. Sem	
34	02-50-2110	Needle Bearing	
35	32-75-2061	Spindle Gear	
36	45-36-0210	Spindle Gear Spacer	
37	32-75-2041	Spindle Gear	
38	36-66-4001	Intermediate Shaft	
39	02-04-0820	Ball Bearing	
40	02-04-1560	Ball Bearing	
41	42-52-0071	Bearing Cap	
42	06-42-1600	Woodruff Key	
43	38-50-3601	Spindle	
44	34-80-2800	Retaining Ring	
45	43-90-0060	Driving Jaw	
46	40-50-0900	Separating Spring	
47	02-02-0250	1/4 Dia. Steel Ball	
48	43-90-0050	Chuck Jaw	
49	06-42-2000	Woodruff Key	
50	42-66-0165	Chuck Assembly	
51	02-02-0180	3/16 Dia. Steel Ball	
52	42-76-0090	Bit Retaining Collar	
53	40-50-1000	Compression Spring	
54	45-88-0070	Collar Stop Washer	
55	34-60-1300	Retaining Ring	
56	14-75-0250	Sleeve Assy. (Incl. Figs. 57,58,59 & 61)	
57	42-24-0080	Driving Jaw Bearing	
58	45-22-0070	Sleeve Assy.	
59	12-98-5910	Identification Plate	
60	02-50-6440	Needle Bearing	
61	06-75-0500	3/8-16 x 1 Hex. Hd. Screw	
62	43-62-0160	Side Handle	