



# SERVICE PARTS LIST

BUL. 54-42-2251

## SCREWDRIVER

REVISED BUL 6139-2 DATE Feb. '68

Catalog No. 6600-1

Starting Serial No. 139-1080

WIRING INSTR.

Both Model and Serial No. must be furnished to obtain correct parts.

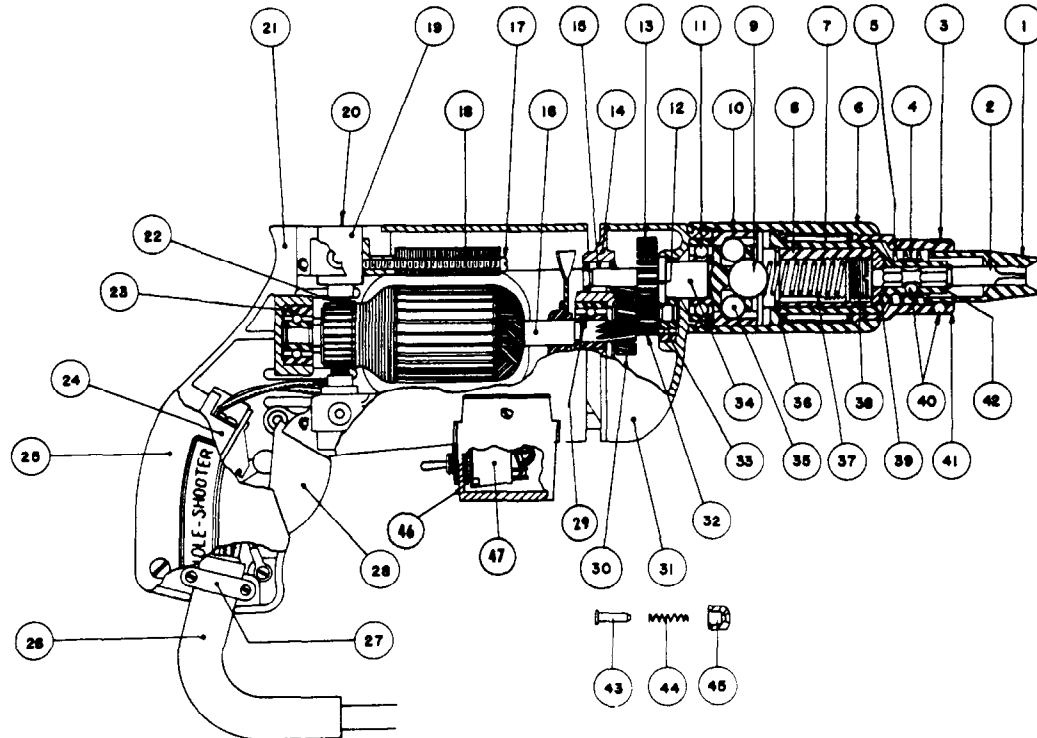


FIG. PART NO. DESCRIPTION OF PART

1	Specify Size	Finder Sleeves
2	Specify Size	Hexagonal Bits
3	40-50-1800	Finder Retaining Spring
4	40-50-1400	Bit Retaining Spring
5	40-50-1900	Finder Spring
6	45-22-0090	Sleeve
7	02-50-6440	Needle Bearing
8	43-84-0060	Threaded Insert
9	02-02-0560	9/16 Dia. Master Ball
10	42-76-0100	Clutch Collar
11	02-04-1020	Ball Bearing
12	34-60-0600	Spindle Snap Ring
13	32-75-1381	Spindle Gear
14	28-28-0221	Diaphragm
15	02-50-1640	Needle Bearing
16	16-22-1111	Armature Assembly
17	06-81-5950	6-32x1-7/8 Fil.Hd. Field Screws
18	18-22-1031	Field Assembly
19	22-22-0050	Brush Holder Assembly
20	23-44-0020	Brush Retaining Cap
21	27-50-4523	Motor Housing
22	22-18-0090	Carbon Brush Assembly
23	02-04-0740	Ball Bearing
24	23-66-0280	Switch

ILLUSTRATED PARTS

FIG. PART NO. DESCRIPTION OF PART

25	28-20-3002	Handle Cover
26	22-64-0170	Cord Set
27	28-17-0400	Cord Clamp
28	28-92-0101	Switch Trigger
29	02-04-0740	Ball Bearing (Pinion End)
30	32-40-1121	Intermediate Gear
31	28-14-0361	Gear Case
32	36-66-1551	Intermediate Pinion Shaft
33	02-04-0640	Ball Bearing
34	38-50-2251	Spindle
35	02-02-0310	5/16 Dia. Driving Balls
36	34-60-1700	Retaining Ring
37	40-50-1500	Torque Limiting Spring (Normal)
37a	40-50-1600	Torque Limiting Spring (Medium)
37b	40-50-1700	Torque Limiting Spring (Light)
38	45-04-0090	Adjusting Screw
39	45-88-0200	Bit Backing Washer
40	02-02-0150	Bit and Finder Retaining Balls
41	43-56-0060	Finder Guide
42	42-66-0230	Chuck
43	44-70-0071	Trigger Lock Shift
44	40-50-1200	Trigger Lock Spring
45	42-42-0061	Trigger Lock Button
46	28-50-7041	Reversing Switch Housing
47	23-66-0220	Reversing Switch

MISCELLANEOUS PARTS NOT SHOWN

PART NO. DESCRIPTION OF PART

02-50-1210	Needle Bearing
06-81-5800	6-32x5/16 Fil.Hd. Sem Switch Mtg. Screw
34-60-2060	Retaining Rings
06-83-0100	10-32x1/4 Hd'less Slotted Brush Holder Scs. (2)
06-81-6150	8-32x1/2 Fil. Hd. Sem Cord Clamp Screws (2)
06-81-8625	6-32x1/4 (Brass) Rd. Hd.
48-03-0010	Attachment Plug Adaptor
06-81-6150	8-32x1/2 Fil. Hd. Sems Handle Cover Screws (3)

PART NO. DESCRIPTION OF PART

06-81-6550	8-32x1-1/2 Fil.Hd. Gear Case Screws Sem (2)
06-81-6300	8-32x7/8 Fil. Hd. Gear Case Screws Sem (2)
06-81-4300	3-48x3/16 Rd. Hd. Name Plate Screws (2)
12-98-0600	Name Plate
06-42-0400	Woodruff Key Screws
06-42-0800	Woodruff Key
45-30-0060	Ball Bearing Retaining Slug
42-14-0060	Baffle