



# SERVICE PARTS LIST

**BUL.54-42-0850**

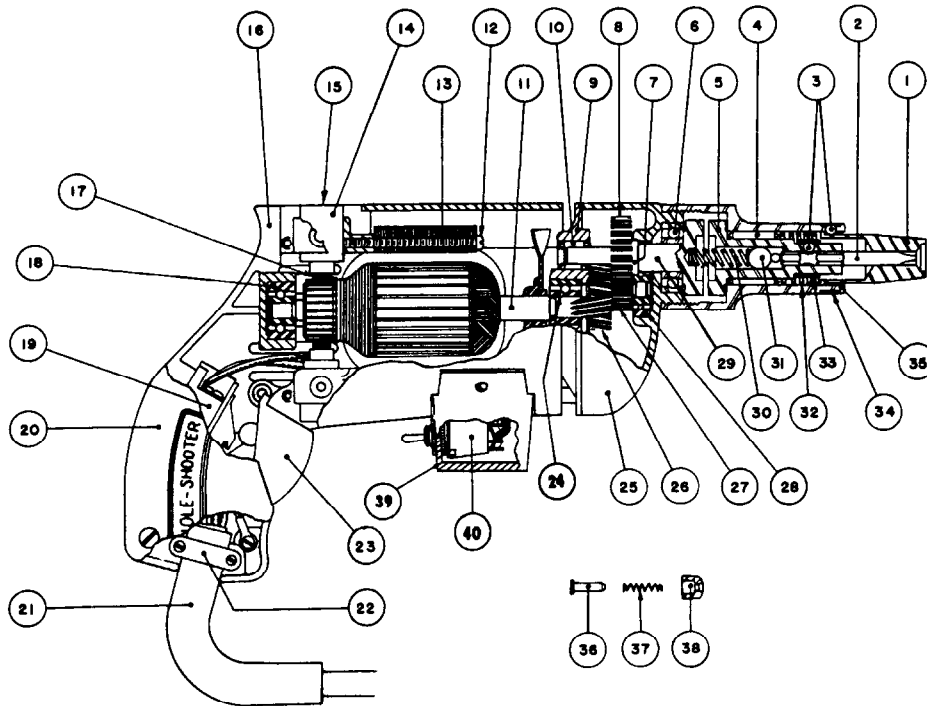
## SCREWDRIVER

REVISED BUL 6137-1      DATE Feb. '68  
WIRING INSTR.

**Catalog No. 6560-1**

Starting Serial No. **137-1001**

Both Model and Serial No. must be furnished to obtain correct parts.



CORRECTS AND SUPERCEDES  
SERVICE BULLETIN 6137-1  
DATED 12/31/57

### ILLUSTRATED PARTS

FIG.	PART NO.	DESCRIPTION OF PART
1	Specify Size	Finder Sleeves
2	Specify Size	Hexagonal Bits
3	02-02-0150	Bit and Finder Retaining Balls
4	02-50-3640	Needle Bearing
5	42-66-0240	Chuck
6	02-04-1020	Ball Bearing
7	34-60-0600	Spindle Snap Ring
8	32-75-1381	Spindle Gear
9	28-28-0221	Diaphragm
10	02-50-1640	Needle Bearing
11	16-22-1111	Armature with Fan
12	06-81-5950	6-32x1-7/8 Fil.Hd. Field Screw Sem (2)
13	18-22-1031	Field Assembly
14	22-22-0050	Brush Holder Assembly
15	23-44-0020	Brush Retaining Cap (2)
16	28-50-4522	Motor Housing
17	22-18-0090	Carbon Brush Assembly (2)
18	02-04-0740	Ball Bearing
19	23-66-0280	Switch
20	28-20-3001	Handle Cover

FIG.	PART NO.	DESCRIPTION OF PART
21	22-64-0170	Cord Set
22	28-17-0400	Cord Clamp
23	28-92-0101	Switch Trigger
24	02-04-0740	Ball Bearing (Pinion End)
25	28-14-0361	Gear Case
26	32-40-1121	Intermediate Gear
27	36-66-1551	Intermediate Pinion Shaft
28	02-04-0640	Int. Pinion Shaft Ball Brg.
29	38-50-2301	Spindle
30	40-50-2000	Separating Spring
31	02-02-0310	5/16 Dia. Ball
32	40-50-1900	Finder Spring
33	40-50-1400	Bit Retaining Spring
34	40-50-1800	Finder Retaining Spring
35	45-22-0100	Sleeve
36	44-70-0071	Trigger Lock Plunger
37	40-50-1200	Trigger Lock Spring
38	42-42-0061	Trigger Lock Button
39	28-50-7041	Reverse Switch Housing
40	23-66-0220	Reverse Switch

### MISCELLANEOUS PARTS NOT SHOWN

PART NO.	DESCRIPTION OF PART	PART NO.	DESCRIPTION OF PART
02-50-1210	Int. Pinion Needle Bearing	06-81-6550	8-32x1-1/2 Fil.Hd. Gear Case Screws Sem (2)
06-81-5800	6-32x5/16 Fil.Hd. Sem Switch Mounting Scs.	06-81-4300	3-48x3/16 Rd.Hd. Name Plate Screws (2)
06-81-6250	8-32x3/4 Fil.Hd. Handle Cover Scs. Sem (2)	12-98-4000	Name Plate
06-83-0100	10-32x1/4 Hd'less Slotted Brush Holder Scs. (2)	06-42-0400	Woodruff Key
06-81-6150	8-32x1/2 Fil.Hd. Cord Clamp Screws Sem (2)	06-42-0800	Woodruff Key
06-81-8625	6-32x1/4 (Brass) Rd.Hd. Ground Screw Sem	48-03-0010	Attachment Plug Adaptor
06-81-6500	8-32x1-3/8 Fil.Hd. Gear Case Screws Sem (2)	42-14-0060	Baffle
06-81-6200	8-32x5/8 Fil.Hd. Sem Handle Cover Screw		

Numbers in brackets indicate number required.