



SERVICE PARTS LIST

BUL. 54-42-0802

SCREWDRIVER

REVISED BUL. 6136-3 DATE Feb. '68
WIRING INSTR.

Catalog No. 6560

Starting Serial No. **136-1140**

Both Model and Serial No. must be furnished to obtain correct parts.

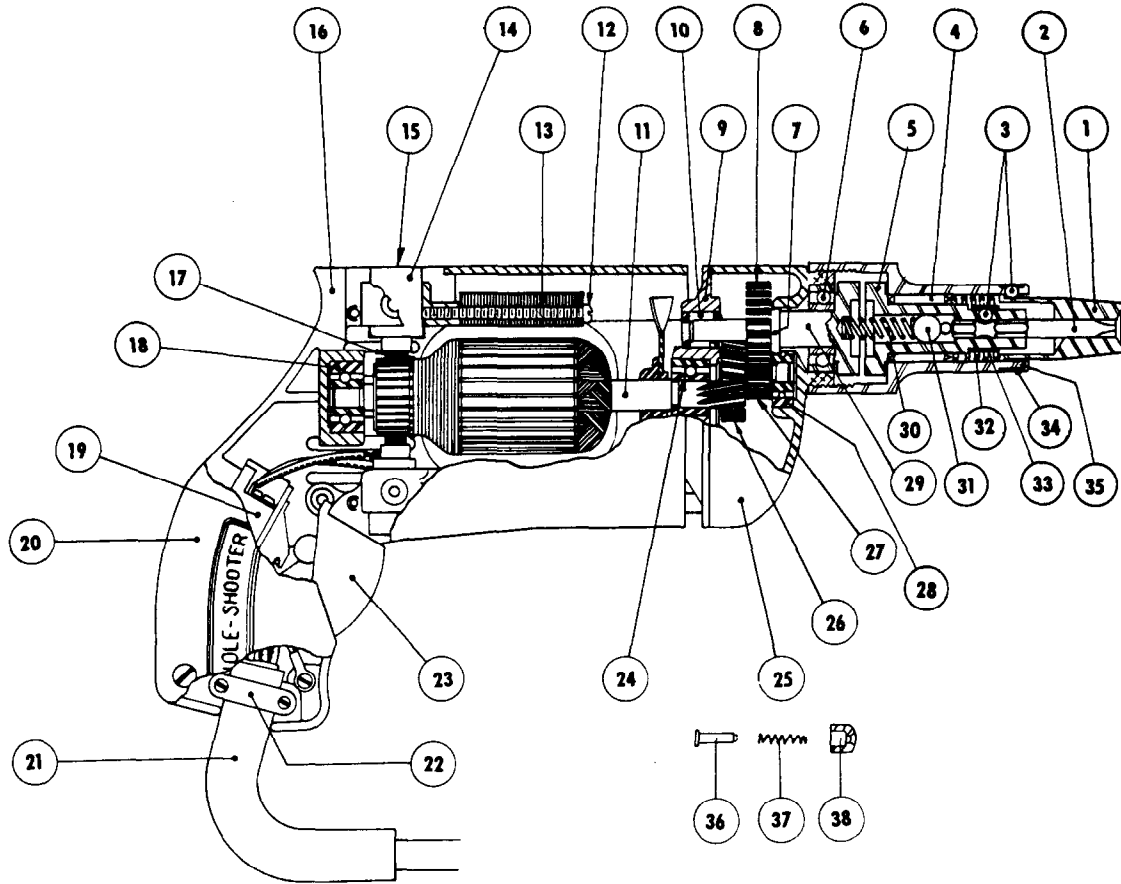


FIG. PART NO. DESCRIPTION OF PART

1	Specify Size	Finder Sleeves
2	Specify Size	Hexagonal Bits
3	02-02-0150	Bit and Finder Retaining Balls
4	02-50-3640	Needle Bearing
5	42-66-0240	Chuck
6	02-04-1020	Ball Bearing
7	34-60-0600	Spindle Snap Ring
8	32-75-1381	Spindle Gear
9	28-28-0221	Diaphragm
10	02-50-1640	Needle Bearing
11	16-22-1110	Armature with Fan
12	06-81-5950	6-32x1-7/8 Fil.Hd. Field Screws
★13	18-22-1030	Field Assembly
14	22-22-0050	Brush Holder Assembly
15	23-44-0020	Brush Retaining Cap
16	28-50-4447	Motor Housing
17	22-18-0090	Carbon Brush Assembly
18	02-04-0740	Ball Bearing
19	23-66-0280	Switch

ILLUSTRATED PARTS

FIG. PART NO. DESCRIPTION OF PART	FIG. PART NO. DESCRIPTION OF PART	
20	28-20-3002	Handle Cover
21	22-64-0170	Cord Set
22	28-17-0400	Cord Clamp
23	31-92-0101	Switch Trigger
24	02-04-0740	Ball Bearing (Pinion End)
25	28-14-0361	Gear Case
26	32-40-1121	Intermediate Gear
27	36-66-1551	Intermediate Pinion Shaft
28	02-04-0640	Ball Bearing
29	38-50-2301	Spindle
30	40-50-2000	Separating Spring
31	02-02-0310	5/16 Dia. Ball
32	40-50-1900	Finder Spring
33	40-50-1400	Bit Retaining Spring
(2) 34	40-50-1800	Finder Retaining Spring
35	45-22-0100	Sleeve
(2) 36	44-70-0071	Trigger Lock Shaft
37	40-50-1200	Trigger Lock Spring
38	42-42-0061	Trigger Lock Button

MISCELLANEOUS PARTS NOT SHOWN

PART NO. DESCRIPTION OF PART
02-50-1210 Needle Bearing
06-81-5800 6-32x5/16 Fil.Hd.Sem.Switch Mounting Screw
06-81-6150 8-32x1/2 Fil.Hd.Sems Handle Cover Screws (3)
06-83-0100 10-32x1/4 Hd'less Slotted Brush Holder Scs. (2)
06-81-6150 8-32x1/2 Fil.Hd. Cord Clamp Screws (2)
06-81-8625 6-32x1/4 (Brass) Rd.Hd. Ground Screw
06-81-4300 3-48x3/16 Rd.Hd. Sems Name Plate Screws (2)
23-16-0265 Insulator

PART NO. DESCRIPTION OF PART
06-81-6550 8-32x1-1/2 Fil.Hd.Gear Case Screws (2)
06-81-6300 8-32x7/8 Fil.Hd. Gear Case Screws (2)
12-98-0600 Name Plate
06-42-0400 Woodruff Key
06-42-0800 Woodruff Key
48-03-0010 Attachment Plug Adaptor
45-30-0060 Ball Brg. Retaining Slug