



SERVICE PARTS LIST

BULLETIN NO.
54-42-0307

SPECIFY CATALOG NO. AND SERIAL NO. WHEN ORDERING PARTS		REVISED BULLETIN	DATE
0-1000 R.P.M. REV. SCREWDRIVER		54-42-0306	May '93
CATALOG NO. 6543-1	STARTING SERIAL NO. 469-59000 or 469A	WIRING INSTRUCTION 58-01-0023	

EXAMPLE:
Component Parts (Small #)
Are Included When Ordering
The Assembly (Large #).

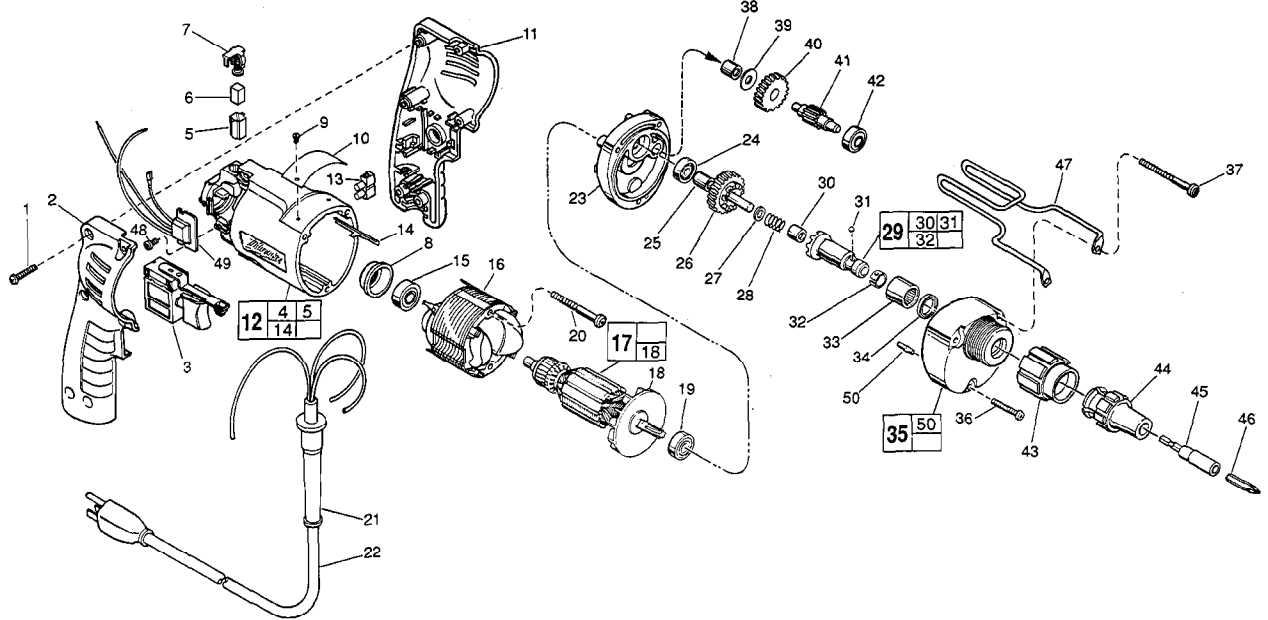


FIG. PART NO.	DESCRIPTION OF PART	NO. REQ.
1	8-16 x 3/4" Pan Hd. Slit. Plast. T-20	(6)
★ 2	Right Handle Half	(1)
★ 3	Speed Control Switch	(1)
4	Ground Wire Assembly (Not Shown)	(1)
★ 5	Brush Tube	(2)
6	Carbon Brush	(2)
7	Brush Spring Assembly	(2)
8	Bearing Cup	(1)
9	Nameplate Screw	(2)
10	Service Nameplate	(1)
★ 11	Left Handle Half	(1)
★ 12	Motor Housing Assembly	(1)
13	Terminal Block	(1)
14	Ground Pin	(1)
15	Ball Bearing	(1)
16	120 Volt Field	(1)
17	120 Volt Armature	(1)
18	Fan Assembly	(1)
19	Ball Bearing	(1)
20	7-18x2" Pan Hd. Slit. Plast. T-20	(2)
21	Cord Protector	(1)
★ 22	Cord Set	(1)
23	Diaphragm	(1)
24	Ball Bearing	(1)
25	Spacer	(1)
26	Clutch Gear Assembly	(1)
27	Thrust Washer	(1)
28	Separator Spring	(1)
29	Clutch Chuck Assembly	(1)
30	Needle Bearing	(1)
31	Steel Ball	(1)
32	Bit Retaining Spring	(1)
33	Needle Roller Bearing	(1)
34	Oil Seal	(1)

FIG. PART NO.	DESCRIPTION OF PART	NO. REQ.
35	14-30-0600 Gear Case Assembly	(1)
36	06-82-7344 7-18 x 1-1/2" Pan Hd. Slit. Plast. T-20	(1)
★ 37	06-82-7464 7-18 x 2-3/4" Pan Hd. Slit. Plast. T-20	(2)
38	02-50-2410 Needle Bearing	(1)
39	45-88-7990 Thrust Washer	(1)
40	32-40-1613 Intermediate Gear	(1)
41	36-66-4096 Intermediate Pinion Shaft	(1)
42	02-04-0640 Ball Bearing	(1)
43	48-32-1000 Bit Housing	(1)
44	48-32-0250 Bit Guide	(1)
	48-32-0608 Long Bit Guide (Refer To Catalog)	(1)
	48-32-1012 Long Bit Guide (Refer To Catalog)	(1)
45	48-32-3050 Bit Holder - Non Magnetic	(1)
	48-30-2600 Bit & Finder Combination (Refer To Catalog)	(1)
	48-30-2650 Bit & Finder Combination (Refer To Catalog)	(1)
46	48-32-1050 #2 Insert Bit	(1)
47	42-70-5080 Belt Clip	(1)
48	06-82-7212 4-20x1/4" Pan Hd. Slit. Plast. T-10	(1)
★ 49	14-20-0650 Remote Electronic Assembly	(1)
50	06-65-0825 1/8 x 1/2 Groove Pin 5	(1)

FIG. LUBRICATION
35 1-1/2 Oz. Type "E" Grease, No. 49-08-4122.
Place Near Intermediate Shaft Ball Bearing
In Gear Case.

FIG. NOTES
1 Torque to 18-22 In./Lbs.
20,36, 37 Torque to 15-20 In./Lbs.
48 Torque to 3-5 In./Lbs.
8 Place in motor housing before inserting armature.
30,33 Press only on end with manufacturer ID.
30 Press 11/64" from clutch face.
34 Lip towards front of gear case.
15,19,24 Seal towards armature.
33,38 Press flush to casting surface.

MILWAUKEE ELECTRIC TOOL CORPORATION
13135 W. LISBON RD., BROOKFIELD, WI 53005