



SERVICE PARTS LIST

BULLETIN NO.
54-42-0306

SPECIFY CATALOG NO. AND SERIAL NO. WHEN ORDERING PARTS		REVISED BULLETIN	DATE
0-1000 R.P.M. REV. SCREWDRIVER		54-42-0305	Apr.'93
CATALOG NO. 6543-1	STARTING SERIAL NO. 469-56805	WIRING INSTRUCTION 58-01-0021	

EXAMPLE:



Component Parts (Small #) Are Included
When Ordering The Assembly (Large #).

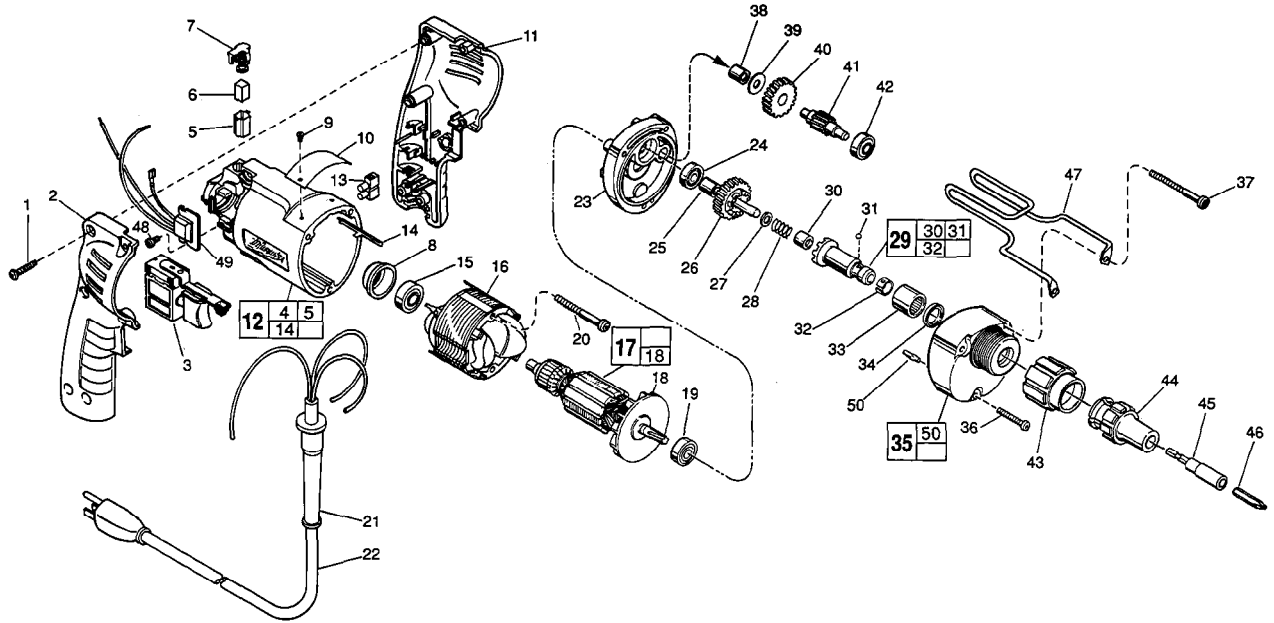


FIG. PART NO.	DESCRIPTION OF PART	NO. REQ.
★ 1	06-82-7284 8-16 x 3/4" Pan Hd. Sit. Plast. T-20	(6)
★ 2	31-44-1705 Right Handle Half	(1)
3	23-66-1655 Speed Control Switch	(1)
★ 4	23-94-6225 Ground Wire Assembly (Not Shown)	(1)
★ 5	22-20-0790 Brush Tube	(2)
6	22-16-0275 Carbon Brush	(2)
★ 7	23-52-1560 Brush Spring Assembly	(2)
★ 8	22-72-0100 Bearing Cup	(1)
9	06-85-0200 Nameplate Screw	(2)
★ 10	12-99-0850 Service Nameplate	(1)
★ 11	31-44-1700 Left Handle Half	(1)
★ 12	14-38-0550 Motor Housing Assembly	(1)
13	22-56-0456 Terminal Block	(1)
14	44-60-0530 Ground Pin	(1)
15	02-04-0645 Ball Bearing	(1)
★ 16	18-11-0150 120 Volt Field	(1)
★ 17	16-10-0370 120 Volt Armature	(1)
★ 18	22-84-0830 Fan Assembly	(1)
19	02-04-0848 Ball Bearing	(1)
20	06-82-7393 7-18x2" Pan Hd. Sit. Plast. T-20	(2)
★ 21	44-76-0210 Cord Protector	(1)
★ 22	22-64-3180 Cord Set	(1)
★ 23	28-28-1960 Diaphragm	(1)
24	02-04-0645 Ball Bearing	(1)
25	45-36-1280 Spacer	(1)
26	32-10-4050 Clutch Gear Assembly	(1)
27	45-88-0712 Thrust Washer	(1)
28	40-50-6600 Separator Spring	(1)
29	42-66-0766 Clutch Chuck Assembly	(1)
30	02-50-2400 Needle Bearing	(1)
31	02-02-0130 Steel Ball	(1)
32	40-50-0510 Bit Retaining Spring	(1)
33	02-50-4220 Needle Roller Bearing	(1)
34	45-06-0106 Oil Seal	(1)

FIG. PART NO.	DESCRIPTION OF PART	NO. REQ.
35	14-30-0600 Gear Case Assembly	(1)
36	06-82-7344 7-18 x 1-1/2" Pan Hd. Sit. Plast. T-20	(1)
37	06-82-7440 7-18 x 2-3/4" Pan Hd. Sit. Plast. T-20	(2)
38	02-50-2410 Needle Bearing	(1)
39	45-88-7990 Thrust Washer	(1)
40	32-40-1613 Intermediate Gear	(1)
41	36-66-4096 Intermediate Pinion Shaft	(1)
42	02-04-0640 Ball Bearing	(1)
43	48-32-1000 Bit Housing	(1)
44	48-32-0250 Bit Guide	(1)
	48-32-0608 Long Bit Guide (Refer To Catalog)	(1)
	48-32-1012 Long Bit Guide (Refer To Catalog)	(1)
45	48-32-3050 Bit Holder - Non Magnetic	(1)
	48-30-2600 Bit & Finder Combination (Refer To Catalog)	(1)
	48-30-2650 Bit & Finder Combination (Refer To Catalog)	(1)
46	48-32-1050 #2 Insert Bit	(1)
★ 47	42-70-5080 Belt Clip	(1)
48	06-82-7212 4-20x1/4" Pan Hd. Sit. Plast. T-10	(1)
★ 49	14-20-0405 Remote Electronic Assembly	(1)
50	06-65-0825 1/8 x 1/2 Groove Pin 5	(1)

FIG. LUBRICATION
35 1-1/2 Oz. Type "E" Grease, No. 49-08-4122.
Place Near Intermediate Shaft Ball Bearing
In Gear Case.

FIG. NOTES
1 Torque to 18-22 In./Lbs.
20,36,37 Torque to 15-20 In./Lbs.
48 Torque to 3-5 In./Lbs.
8 Place in motor housing before inserting armature.
30,33 Press only on end with manufacturer ID.
30 Press 11/64" from clutch face.
34 Lip towards front of gear case.
15,19,24 Seal towards armature.
33,38 Press flush to casting surface.

MILWAUKEE ELECTRIC TOOL CORPORATION
13135 W. LISBON RD., BROOKFIELD, WI 53005