



SERVICE PARTS LIST

**BULLETIN NO.
54-42-0303**

SPECIFY CATALOG NO. AND SERIAL NO. WHEN ORDERING PARTS		REVISED BULLETIN 54-42-0302	DATE April '85
POSITIVE DRIVE REV. SCREW DRIVER		WIRING INSTRUCTION 58-01-0653	
CATALOG NO. 6543-1	STARTING SERIAL NO. 469-18500		
CAT. NO. 6543-6	START SER. NO. 469-18500	BILINGUAL LABEL 10-98-6405	

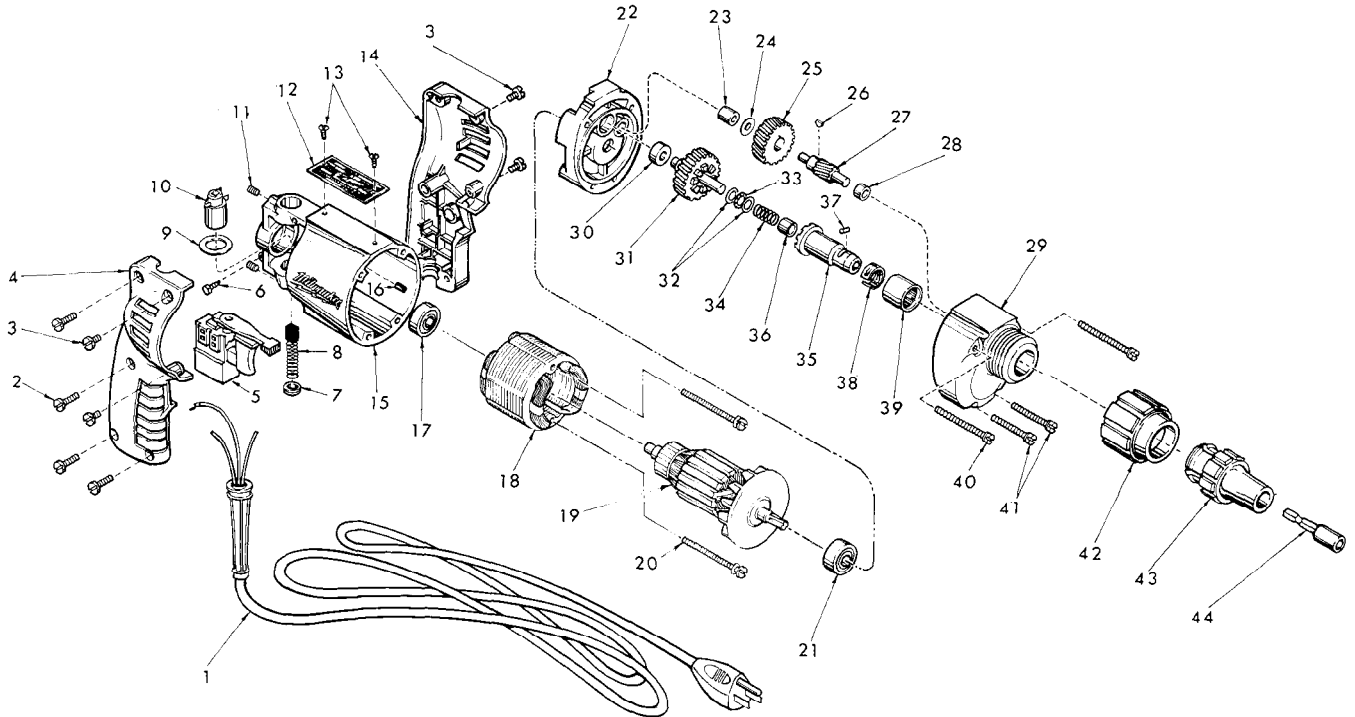


FIG.	PART NO.	DESCRIPTION OF PART	NO. REQ.	FIG.	PART NO.	DESCRIPTION OF PART	NO. REQ.
	1	Cord Set	(1)	24	45-88-7280	Nylon Thrust Washer	(1)
★	2	8-18x3/4 Thread Form Screw	(4)	25	32-40-1611	Intermediate Gear	(1)
★	3	8-32 x 3/8 Taprite Screw	(4)	26	06-42-0400	Woodruff Key	(1)
★	4	R. H. Handle Half	(1)	27	36-66-4095	Intermediate Pinion Shaft	(1)
★	5	Rev. Speed Control Switch	(1)	28	02-50-1635	Needle Bearing	(1)
	6	6-32x1/4 Ground Screw	(1)	29	28-14-1210	Gear Case (Includes 06-65-0825 Groove Pin)	(1)
	7	Brush Retaining Screw	(2)	30	02-08-0210	Ball Bearing	(1)
	8	Carbon Brush	(2)	31	32-10-1000	Clutch Gear	(1)
	9	Washer	(2)	32	45-88-0550	Thrust Washer	(2)
	10	Brush Holder Assy.	(2)	33	02-80-0100	Thrust Bearing	(1)
	11	10x32x1/4 Hds. Skt. Screw	(2)	34	40-50-6600	Separator Spring	(1)
★	12	Nameplate	(1)	35	42-66-0751	Drive Chuck (Includes Figs. 36 thru 38)	(1)
	13	6x1/4 Round Hd. Type Z Screw	(2)	36	02-50-1610	Needle Bearing	(1)
★	14	L. H. Handle Half	(1)	37	02-55-0150	Loose Roller Bearing	(1)
★	15	Motor Housing (Includes Fig. 16)	(1)	38	40-50-1450	Bit Retaining Spring	(1)
	16	Ball Bearing Retaining Slug	(1)	39	02-50-4050	Needle Bearing	(1)
	17	Ball Bearing	(1)	40	06-81-6740	8-32x2 Fil. Hd. Sem	(2)
★	18	120 V. Field	(1)	41	06-81-6550	8-32x1-1/2 Fil. Hd. Sem	(2)
	19	120 V. Armature	(1)	42	48-32-1000	Bit Guide Housing	(1)
	20	6-32x1-7/8 Fil. Hd Sems	(2)	43	48-32-0250	1/4 Bit Guide	(1)
	21	Ball Bearing	(1)	44	48-32-3050	1/4 Hex Bit Holder	(1)
	22	Diaphragm	(1)	★ 45	10-98-5986	Warning Label (Not Shown)	(1)
	23	Needle Bearing	(1)			Omit For Canadian Tools	