



# SERVICE PARTS LIST

**BUL. 54-42-0601**

## SCREWDRIVER

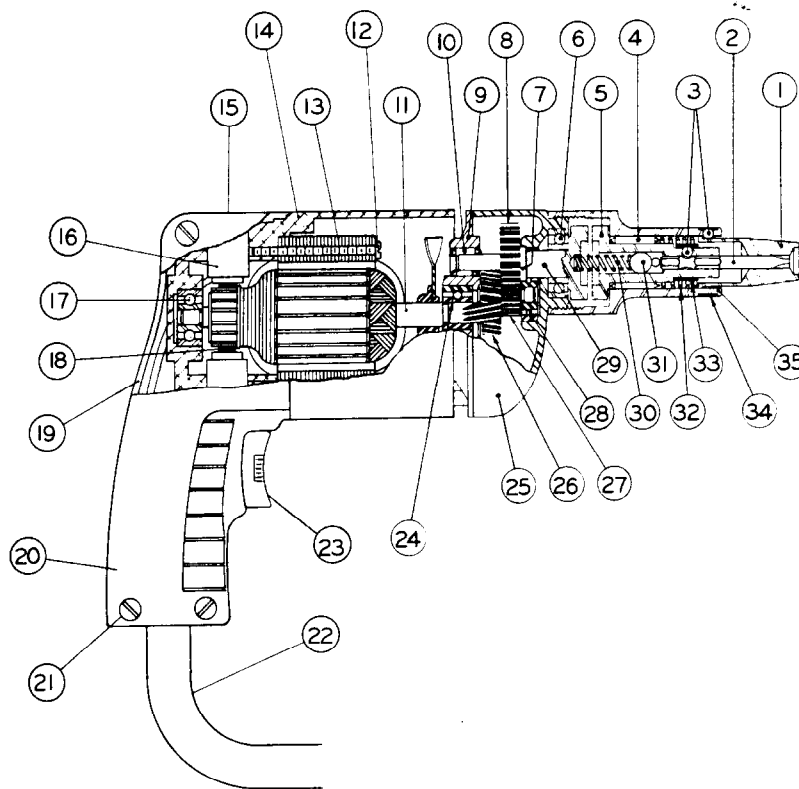
REVISED BUL. 54-42-0600 DATE Aug. '68

**Catalog No. 6541-1**

Starting Serial No. **388-1436**

WIRING INSTR. **58-01-0060**

Both Model and Serial No. must be furnished to obtain correct parts.



### ILLUSTRATED PARTS

FIG.	PART NO.	DESCRIPTION OF PART	NO.REQ.	FIG.	PART NO.	DESCRIPTION OF PART	
	1	Finder Sleeves		★ 19	31-44-0211	Left Hand Handle Half Assy.	
	2	Hexagonal Bits		★ 20	31-44-0200	Right Hand Handle Half	
	3	02-02-0150 5/32 Steel Ball	(2)	★ 21	06-81-0400	8-32x3/4 Pan Hd. Handle Mtg. Scr.	(4)
	4	02-50-3640 Needle Bearing		22	22-64-0450	Cord Set	
	5	42-66-0240 Chuck		23	23-66-0520	Switch	
	6	02-04-1020 Ball Bearing		24	02-04-0740	Ball Bearing	
	7	34-60-0600 Spindle Snap Ring		25	28-14-0361	Gear Case	
	8	32-75-1121 Spindle Gear		26	32-40-1121	Intermediate Gear	
	9	28-28-0221 Diaphragm		27	36-66-0851	Intermediate Shaft	
	10	02-50-1640 Needle Bearing		28	02-04-0640	Ball Bearing	
	11	16-22-1241 Armature		29	38-50-2301	Spindle	
	12	06-81-5950 6-32x 1-7/8 Fil.Hd. Field Screw	(2)	30	40-50-2000	Separating Spring	
	13	18-22-1121 Field		31	02-02-0310	5/16 Steel Ball	
	14	28-50-6091 Motor Housing		32	40-50-1900	Finder Spring	
	15	23-44-0020 Brush Retaining Screw	(2)	33	40-50-1400	Bit Retaining Spring	
	16	22-22-0251 Brush Holder Assy.	(2)	34	40-50-1800	Finder Retaining Spring	
	17	02-04-0740 Ball Bearing		35	45-22-0100	Sleeve	
	18	22-18-0360 Carbon Brush Assy.	(2)				

### MISCELLANEOUS PARTS NOT SHOWN

PART NO.	DESCRIPTION OF PART	NO.REQ.	PART NO.	DESCRIPTION OF PART	
02-50-1210	Needle Bearing		12-98-0600	Name Plate	
06-81-8625	6-32 x 1/4 Rd. Hd. Brass Ground Screw		06-42-0400	Woodruff Key	
48-03-0010	Plug Adaptor		06-42-0800	Woodruff Key	
06-81-6550	8-32 x 1 1/2 Fil. Hd. Gear Case Screw	(2)	45-30-0120	Ball Bearing Ret. Slug	
06-81-6300	8-32 x 7/8 Fil. Hd. Gear Case Screw	(2)	06-81-4300	3-48 x 3/16 Rd. Hd. Name Plate Screw	(2)
★ 06-81-0450	8-32x3/8 Pan Hd. Handle Mtg. Scr.	(4)	06-83-0100	10-32x 1/4 Brush Holder Set Screw	(2)