



SERVICE PARTS LIST

BUL. 54-42-0502

SCREWDRIVER

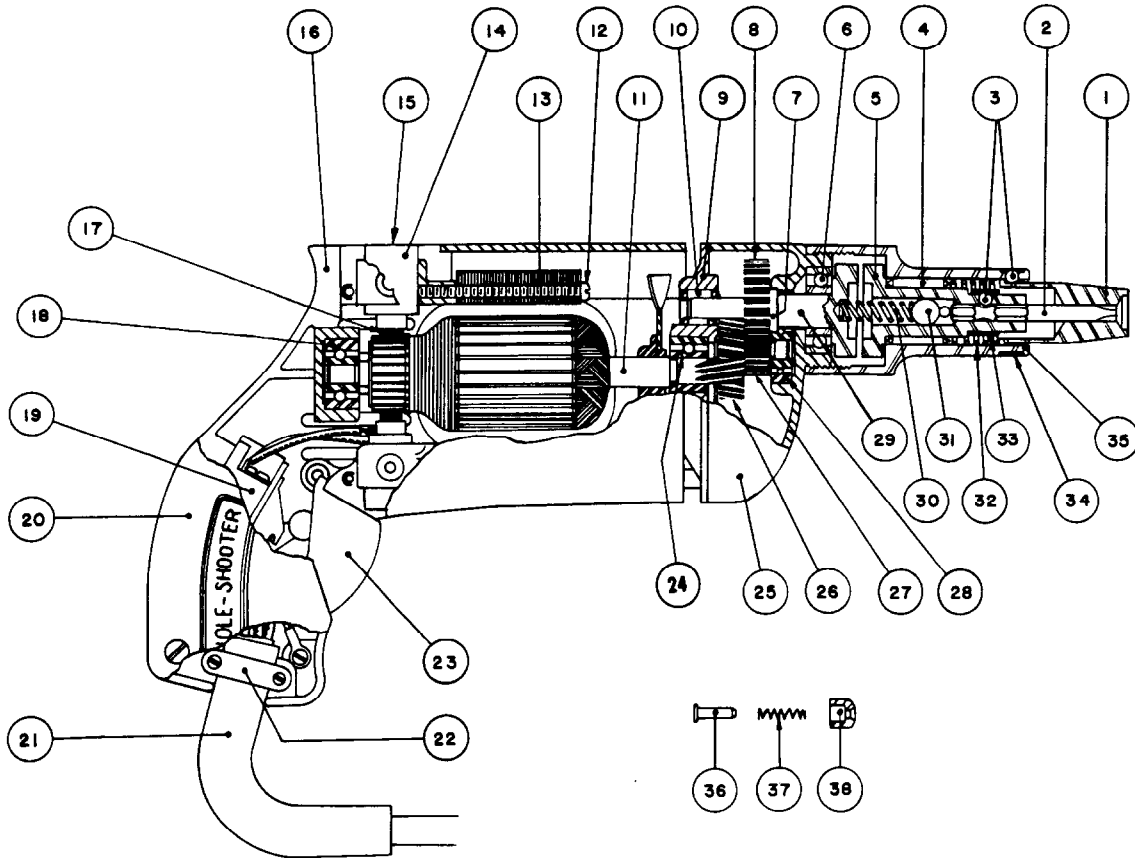
REVISED BUL. 641-5 DATE Feb. '68

Catalog No. 6540

Starting Serial No. **41-2958**

WIRING INSTR.

Both Model and Serial No. must be furnished to obtain correct parts.



ILLUSTRATED PARTS

FIG.	PART NO.	DESCRIPTION OF PART	FIG.	PART NO.	DESCRIPTION OF PART
1	Specify Size	Finder Sleeves	20	28-20-3002	Handle Cover
2	Specify Size	Hexagonal Bits	21	22-64-0170	Cord Set
3	02-02-0150	5/32" Dia. Bit & Finder Ret. Balls	22	28-17-0400	Cord Clamp
4	02-50-3640	Needle Bearing	23	31-92-0101	Switch Trigger
5	42-66-0240	Chuck	24	02-04-0740	Ball Bearing
6	02-04-1020	Ball Bearing	25	28-14-0361	Gear Case
7	34-60-0600	Spindle Snap Ring	26	32-40-1121	Intermediate Gear
8	32-75-1121	Spindle Gear	27	36-66-0851	Inter. Pinion Shaft
9	28-28-0221	Diaphragm	28	02-04-0640	Ball Bearing
10	02-50-1640	Needle Bearing	29	38-50-2301	Spindle
11	16-22-1110	Armature with Fan	30	40-50-2000	Separating Spring
12	06-81-5950	6-32x1-7/8 Fil. Hd. Field Screws (2)	31	02-02-0310	5/16" Dia. Ball
*13	18-22-1030	Field Assembly	32	40-50-1900	Finder Spring
14	22-22-0080	Brush Holder Assembly	33	40-50-1400	Bit Retaining Spring
15	23-44-0020	Brush Retaining Cap (2)	34	40-50-1800	Finder Retaining Spring
16	28-50-4447	Motor Housing	35	45-22-0100	Sleeve
17	22-18-0090	Carbon Brush Assemblies (2)	36	44-70-0071	Trigger Lock Shaft
18	02-04-0740	Ball Bearing	37	40-50-1200	Trigger Lock Spring
19	23-66-0280	Switch	38	42-42-0061	Trigger Lock Button

MISCELLANEOUS PARTS NOT SHOWN

SIZE OR PART NO.	DESCRIPTION OF PART	SIZE OR PART NO.	DESCRIPTION OF PART
02-50-1210	Needle Bearing	06-81-8625	6-32x1/4"(Brass)Rd.Hd.Ground Screw
06-81-6150	8-32x1/2 Fil.Hd.Sems Handle Cover Scs.(3)	06-81-6550	8-32x1-1/2 Fil.Hd.Gear Case Screws (2)
45-30-0060	Ball Bearing Retaining Slug	06-81-6300	8-32x7/8 Fil.Hd.Gear Case Screws (2)
06-81-5800	6-32x5/16 Fil.Hd.Sem.Switch Mtg.Sc.	06-81-4300	3-48x3/16 Rd.Hd.Name Plate Screws (2)
06-83-0100	10-32x1/4"Hd'less Slotted Brush Holder Sc (2)	12-98-0600	Name Plate
06-81-6150	8-32x1/2 Fil.Hd.Cord Clamp Screws (2)	06-42-0400	Woodruff Key
48-03-0010	Attachment Plug Adaptor	06-42-0800	Woodruff Key
42-14-0060	Baffle	23-16-0265	Insulator