



SERVICE PARTS LIST

BULLETIN NO.
54-40-0725

SPECIFY CATALOG NO. AND SERIAL NO. WHEN ORDERING PARTS		REVISED BULLETIN	DATE
TRIGGER SPEED CONTROL SAWZALL			April '95
CATALOG NO. 6518	STARTING SERIAL NO. 859A	WIRING INSTRUCTION 58-01-0780	

EXAMPLE:
Component Parts (Small #)
Are Included When Ordering
The Assembly (Large #).

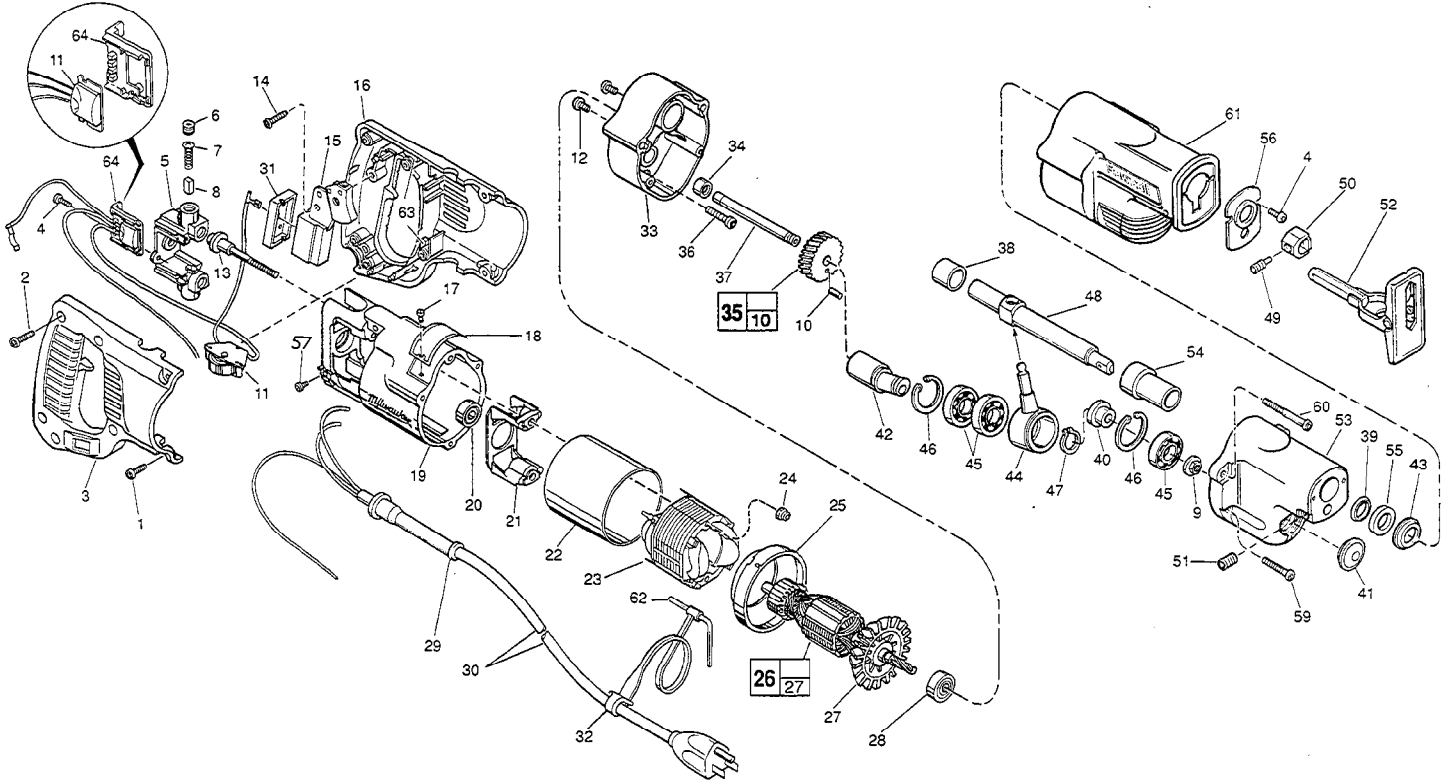


FIG.	PART NO.	DESCRIPTION OF PART	NO. REQ.	FIG.	PART NO.	DESCRIPTION OF PART	NO. REQ.
1	06-82-5316	8-32 x 1/2" Slot Pan Hd. T-20	(4)	36	06-82-5320	8-32 x 5/8" Pan Hd. Slit. Taptite T-20	(1)
2	06-82-7270	8-16 x 5/8" Pan Hd. Plastite T-20	(5)	37	42-12-0180	Axle-Wobble Shaft	(1)
3	31-44-1651	Right Handle Half	(1)	38	42-24-0620	Rear Spindle Bearing	(1)
4	06-95-0075	6-32 x 3/8" Truss Hd. Taptite Screw	(4)	39	45-06-0475	Poly-Pak Seal	(1)
5	22-22-1380	Brush Holder Assembly	(1)	40	45-36-1450	Spacer	(1)
6	23-44-0190	Brush Retaining Cap	(2)	41	42-52-0380	Bearing Cap	(1)
7	23-52-0160	Brush Spring	(2)	42	36-92-0740	Wobble Shaft	(1)
8	22-16-0275	Carbon Brush	(2)	43	44-86-0595	Seal Cup	(1)
9	06-55-3790	5/16-24 Spinlock Hex Nut	(1)	44	30-72-0111	Wobble Plate	(1)
10	06-65-0606	3/16" x 1/2" Drivelok Pin	(1)	45	02-04-1510	Ball Bearing	(3)
11	14-20-3020	Dial Assembly	(1)	46	34-80-2600	Internal Retaining Ring	(2)
12	06-82-7252	8-32 x 3/8" Pan Hd. Taptite T-20	(2)	47	34-60-1315	External Retaining Ring	(1)
13	06-81-1060	8-16 x 2-1/4 Field Bolt	(2)	48	38-50-6035	Reciprocating Spindle	(1)
14	06-82-7270	8-16 x 5/8" Pan Hd. Plastite T-20	(1)	49	06-83-2970	Blade Clamp Screw	(1)
15	23-66-1490	Switch	(1)	50	42-68-0675	Blade Clamp	(1)
16	31-44-1656	Left Handle Half	(1)	51	06-83-3150	5/16-18 x 1/2" Hex Socket Hd. Set Screw	(1)
17	06-72-1720	Nameplate Rivet	(2)	52	45-16-0615	Pivot Shoe Assembly	(1)
18	12-99-1730	Service Nameplate	(1)	53	28-14-2180	Gear Case	(1)
19	28-50-6220	Motor Housing	(1)	54	42-24-0615	Forward Spindle Bearing	(1)
20	02-04-0845	Ball Bearing	(1)	55	45-06-0500	Felt Seal	(1)
21	31-55-0190	Coil Shield	(1)	56	44-86-0590	Seal Retainer	(1)
22	23-16-0456	Field Insulator	(1)	57	06-95-5150	6-32 x 1/4" Hex Hd. Taptite Sems	(1)
23	18-31-0600	120 V. Field	(1)	59	06-82-5346	8-32 x 3/4" Pan Hd. Taptite T-20	(2)
24	06-57-2975	8-32 Flexlock Hex Nut	(2)	60	06-82-5516	8-32 x 2-3/8" Pan Hd. Slit. Taptite T-20	(2)
25	31-05-0050	Baffle	(1)	61	45-12-0510	Gear Case Insulator	(1)
26	16-30-0530	120 V. Armature	(1)	62	49-96-0070	5/32" Socket Wrench	(1)
27	22-84-0531	Fan Assembly	(1)	63	14-46-1001	Foam Slug Kit (10 Slugs)	(2)
28	02-04-0911	Ball Bearing	(1)	64	43-72-0175	Heat Sink Holder	(1)
29	44-76-0210	Cord Protector	(1)				
30	22-64-3190	Cord Set	(1)				
31	45-12-0470	Dust Shield	(1)				
32	48-66-4080	Key Holder	(1)				
33	28-28-2080	Diaphragm	(1)				
34	02-50-2150	Needle Bearing	(1)				
35	32-40-2223	Intermediate Gear Assembly	(1)				

**SEE REVERSE SIDE FOR
IMPORTANT SERVICE NOTES**

MILWAUKEE ELECTRIC TOOL CORPORATION
13135 W. LISBON RD., BROOKFIELD, WI 53005

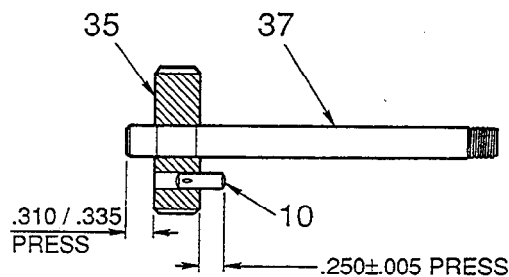
FIG. LUBRICATION

- 33 Place 3/4 oz. of type "L" grease, No. 49-08-4175, in diaphragm cavity near needle bearing.
- 53 Place 2-3/4 oz. of type "L" grease, No. 49-08-4175, in mechanism cavity of gear case.
- 55 Saturate with bushing oil before assembly.

FIG. NOTES

9,10,35,37

Axle should extend .285 min. beyond intermediate gear after seating torque to spinlock hex nut (not shown) is applied.



Pin is to be pressed into gear as shown.

- 20 Seal side faces commutator.
- 20,28,45 Press bearings to shaft shoulders.
- 33,38 Press rear spindle bearing flush to .030 below bearing boss of diaphragm.
- 34 Press bearing flush ($\pm .005$) to diaphragm surface.
- 39 O-ring of seal towards rear of tool.
- 45,46 Retaining rings are to be installed with the beveled side away from the bearings.
- 53,54 Press forward spindle bearing flush to .030 below bearing boss of gear case.