



# SERVICE PARTS LIST

**BULLETIN NO.**  
**55-40-1575**

SPECIFY CATALOG NO. AND SERIAL NO. WHEN ORDERING PARTS		REVISED BULLETIN	DATE
<b>CORDLESS 18 VOLT SAWZALL®</b>			Mar. '97
CATALOG NO. <b>6516-51</b>	STARTING SERIAL NO. <b>918A</b>	WIRING INSTRUCTION <b>58-01-0790</b>	

**EXAMPLE:**  
Component Parts (Small #)  
Are Included When Ordering  
The Assembly (Large #).

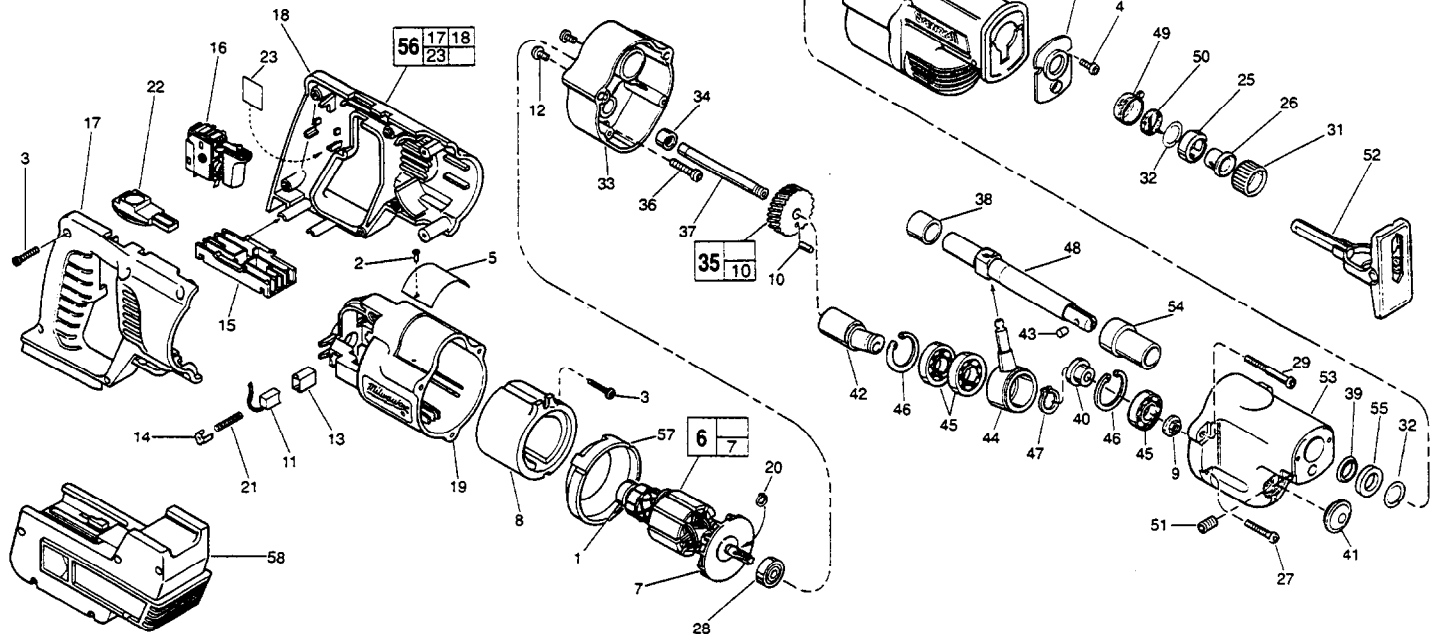


FIG.	PART NO.	DESCRIPTION OF PART	NO. REQ.	FIG.	PART NO.	DESCRIPTION OF PART	NO. REQ.
1	02-04-5130	Ball Bearing	(1)	42	36-92-0740	Wobble Shaft	(1)
2	06-72-1720	Nameplate Rivet	(2)	43	44-60-0625	Pin	(1)
3	06-82-7261	6-19 x 11/16" Pan Hd. St. Plastite T-15	(8)	44	30-72-0111	Wobble Plate	(1)
4	06-95-0075	6-32 x 3/8" Truss Hd. Taprite T-10 Screw	(2)	45	02-04-1510	Ball Bearing	(3)
5	12-99-2140	Service Nameplate	(1)	46	34-80-2600	Internal Retaining Ring	(2)
6	16-01-0090	Armature	(1)	47	34-60-1315	External Retaining Ring	(1)
7	22-84-0830	Fan Assembly	(1)	48	38-50-6005	Reciprocating Spindle	(1)
8	18-01-0050	Field	(1)	49	31-15-0510	Spring Cover	(1)
9	06-55-3790	5/16-24 Spinlock Hex Nut	(1)	50	40-50-0160	Torsion Spring	(1)
10	06-65-0606	3/16" x 1/2" Drivelok Pin	(1)	51	06-83-3150	5/16-18 x 1/2" Hex Socket Hd. Set Screw	(1)
11	22-18-0975	Carbon Brush Assembly-Right	(1)	52	45-16-0615	Pivot Shoe Assembly	(1)
11A	22-18-0970	Carbon Brush Assembly-Left (Not Shown)	(1)	53	28-14-2180	Gear Case	(1)
12	06-82-7252	8-32 x 3/8" Pan Hd. Taprite T-20	(2)	54	42-24-0615	Forward Spindle Bearing	(1)
13	22-20-0860	Brush Tube	(2)	55	45-06-0500	Felt Seal	(1)
14	22-32-0400	Brush Spring Clip	(2)	56	31-44-0690	Handle Kit	(1)
15	22-56-0200	Connector Block	(1)	57	31-05-0080	Baffle	(1)
16	23-66-2350	Switch	(1)		49-96-0070	5/32" Hex Key	(1)
17		Handle Half-Right	(1)		23-94-5890	Leadwire Assy.-Black (See 58-01-0790)	(1)
18		Handle Half-Left	(1)		23-94-5895	Leadwire Assy.-White (See 58-01-0790)	(1)
19	31-50-0961	Motor Housing	(1)	58	48-11-0580	18 Volt Battery (Accessory)	(1)
20	34-60-0650	External Retaining Ring	(1)	58A	31-50-1500	Battery Housing Kit (Contains 58B Thru 58G)	(1)
21	40-50-8840	Brush Spring	(2)	58B	31-50-1421	Battery Housing-Left (Not Shown)	(1)
22	45-24-0201	Lock Off Slide	(1)	58C	31-50-1426	Battery Housing-Right (Not Shown)	(1)
23	10-15-0175	Wiring Instruction Label	(1)	58D	31-50-1431	Battery Housing-Top (Not Shown)	(1)
24	44-86-0615	Seal Retainer	(1)	58E	10-20-7010	Power Plus Label-Right (Not Shown)	(1)
25	42-50-0075	Cam Collar	(1)	58F	10-20-7020	Power Plus Label-Left (Not Shown)	(1)
26	45-22-0080	Sleeve	(1)	58G	10-15-0670	Nameplate Label (Not Shown)	(1)
27	06-82-5346	8-32 x 3/4" Pan Hd. Taprite T-20	(2)	58H	06-82-7295	9-16 x 1/2" Pan Hd. T-15 (Not Shown)	(6)
28	02-04-0911	Ball Bearing	(1)	58J	44-20-0411	Battery Latch-Right (Not Shown)	(1)
29	05-88-8301	K50 x 60mm Pan Hd. PT T-20	(2)	58K	44-20-0421	Battery Latch-Left (Not Shown)	(1)
30	45-12-0510	Gear Case Insulator	(1)	58L	40-50-8795	Latch Spring (Not Shown)	(2)
31	31-15-0075	Plastic Collar	(1)				
32	45-88-8576	Washer	(2)				
33	28-28-2080	Diaphragm	(1)				
34	02-50-2150	Needle Bearing	(1)				
35	32-40-2345	Intermediate Gear Assembly	(1)				
36	05-88-8307	K50 x 22mm Pan Hd. PT T-20	(1)				
37	42-12-0180	Axle-Wobble Shaft	(1)				
38	42-24-0620	Rear Spindle Bearing	(1)				
39	45-06-0475	Poly-Pak Seal	(1)				
40	45-36-1450	Spacer	(1)				
41	42-52-0380	Bearing Cap	(1)				

**FIG. NOTES:**  
11, 11A, 13 Remove Brushes And Brush Tubes To Prevent Damage  
When Installing Or Removing Armature From Motor Hsg.

**SEE REVERSE SIDE FOR  
IMPORTANT SERVICE NOTES**

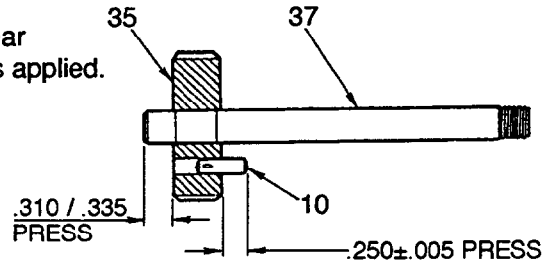
**MILWAUKEE ELECTRIC TOOL CORPORATION**  
13135 W. LISBON RD., BROOKFIELD, WI 53005

**FIG. LUBRICATION**

- 33 Place 3/4 oz. of type "L" grease, No. 49-08-4175, in diaphragm cavity near needle bearing.
- 53 Place 2-3/4 oz. of type "L" grease, No. 49-08-4175, in mechanism cavity of gear case.
- 55 Saturate with lightweight oil before assembly.

**FIG. NOTES**

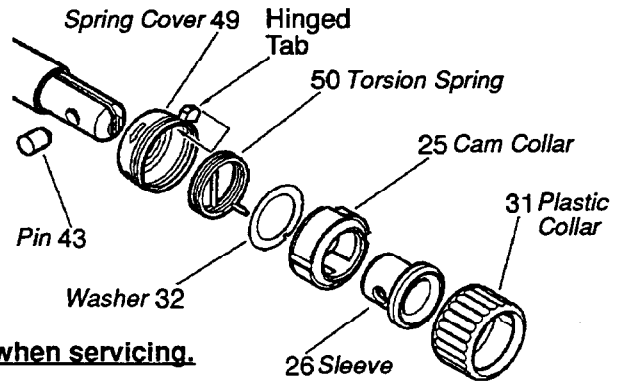
- 9 Apply thread locking compound to threads of spinlock hex nut. Torque to 145in./lbs.-185 in./lbs.
- 9,10,35,37 Axle should extend .285 min. beyond intermediate gear after seating torque to spinlock hex nut (not shown) is applied.
- 20 Pin is to be pressed into gear as shown.
- 20 Seal side faces commutator.
- 20,28,45 Press bearings to shaft shoulders.
- 33,38 Press rear spindle bearing flush to .030 below bearing boss of diaphragm.
- 34 Press bearing flush ( $\pm .005$ ) to diaphragm surface.
- 39 O-ring of seal towards rear of tool.
- 45,46 Retaining rings are to be installed with the beveled side away from the bearings.
- 53,54 Press forward spindle bearing flush to .030 below bearing boss of gear case.



**REMOVING THE KEYLESS QUIK-LOK BLADE CLAMP**

25,26,31,32,  
43,48,49,50

To remove keyless blade clamp, pry or press off plastic collar. Pop up the hinged tab on spring cover. Rotate cam collar until it stops fully open. While holding cam collar, insert Sawzall blade to push pin partially out. Insert a rigid wire-like instrument, like a paper clip with a slight bend on the end. Locate the pin area on inside slot and twist the paper clip to remove the pin from spindle.



**Clean all parts before reassembly.**

25,43

If cam collar or pin is replaced, coat pin with powdered graphite.

31,49

**Always replace plastic collar and spring cover when servicing.**

**REASSEMBLY OF THE KEYLESS QUIK-LOK BLADE CLAMP**

25,26,31,32,  
43,48,49,50

To reassemble keyless blade clamp, place sleeve (26) in cam collar (25) then place washer (32) on sleeve (26). Insert spring leg of torsion spring (50) into hole on cam collar (25) and slot in washer (32). Cover up with spring cover (49).

Facing the front end of the tool, position reciprocating spindle with the pin hole facing up. Slide keyless blade clamp assembly onto the spindle with slot in cam collar (25) toward the left. Rotate the assembly in the direction of the arrows, approximately 205°. A ground pin may be used to keep the slot and sleeve hole in alignment until hole in spindle is reached. Use a pliers to hold assembly and remove ground pin. Pin (43) can now be inserted into clamp. Snap clamp to assure proper functioning before adding plastic collar (31). Fold hinged tab on spring cover (49) into slot on cam collar (25) as shown. Tab must be present to assure proper function. Slide plastic collar (31) onto assembly. Rotate plastic collar (31) until keyways line up and slide plastic collar (31) over snap in spring cover (49).