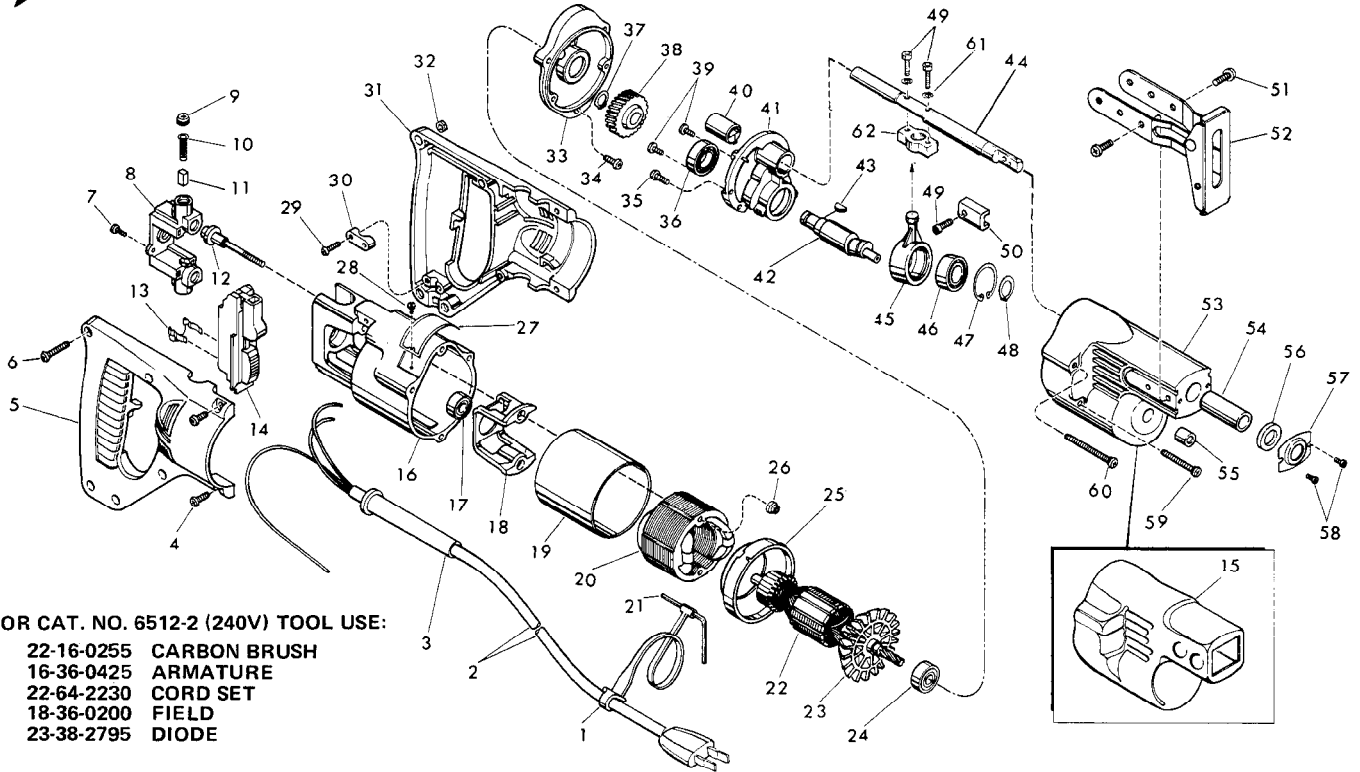




# SERVICE PARTS LIST

**BULLETIN NO.**  
54-40-4144

SPECIFY CATALOG NO. AND SERIAL NO. WHEN ORDERING PARTS		REVISED BULLETIN 54-40-4143	DATE April '84
<b>TWO SPEED DOUBLE INSULATED SAWZALL</b>			
<b>CATALOG NO. 6512</b>	<b>STARTING SERIAL NO. 483-104000</b>	<b>WIRING INSTRUCTION 58-01-0245</b>	



FOR CAT. NO. 6512-2 (240V) TOOL USE:

- 22-16-0255 CARBON BRUSH
- 16-36-0425 ARMATURE
- 22-64-2230 CORD SET
- 18-36-0200 FIELD
- 23-38-2795 DIODE

FIG.	PART NO.	DESCRIPTION OF PART	NO. REQ.	FIG.	PART NO.	DESCRIPTION OF PART	NO. REQ.
	1	48-66-4080 Key Holder	(1)	★ 37	34-60-0920	Retaining Ring - External (See Note)	(1)
★	2	22-64-0408 Cord Set	(1)	★ 38	32-40-1920	Intermediate Gear	(1)
★	3	44-76-0150 Cord Protector	(1)	★ 39	06-95-0075	6-32 x 3/8 Truss Hd. Taptite Screw	(2)
	4	06-95-0700 8-32 x 1/2 Pan Hd. Taptite Screw	(4)	★ 40	42-24-0250	Spindle Bearing - Rear	(1)
★	5	31-44-1300 R.H. Half - D Handle	(1)	★ 41	28-72-1002	Bearing Plate Assy. (Includes 06-65-0825 Groove Pin)	(1)
★	6	06-81-0473 8-32 x 1 Pan Hd. Pozi Drive Screw	(5)	★ 42	36-92-0670	Wobble Shaft	(1)
★	7	06-95-0075 6-32 x 3/8 Truss Hd. Taptite Screw	(2)	43	06-42-1200	Woodruff Key	(1)
★	8	22-22-1330 Brush Holder Assembly	(1)	44	38-50-2002	Reciprocating Spindle	(1)
★	9	23-44-0190 Brush Retaining Cap	(2)	★ 45	30-72-0060	Wobble Plate	(1)
	10	23-52-0160 Brush Spring	(2)	46	02-04-1510	Ball Bearing	(1)
★	11	22-16-0275 Carbon Brush	(2)	47	34-80-2355	Retaining Ring - Internal (See Note)	(1)
★	12	06-81-1058 Insulated Field Bolt	(2)	48	34-60-1200	Retaining Ring - External (See Note)	(1)
	13	23-38-2790 Diode	(1)	49	06-75-2400	10-32 x 1/2 Skt. Hd. Screw	(3)
	14	23-66-1040 Switch	(1)	50	42-68-0073	Blade Clamp	(1)
	15	45-12-0300 Gear Case Insulator	(1)	★ 51	06-95-0800	10-24 x 1/2 Pan Hd. Taptite Screw	(4)
★	16	28-50-6200 Motor Housing	(1)	★ 52	45-16-0495	Pivot Shoe Assembly	(1)
★	17	02-04-0845 Ball Bearing	(1)	★ 53	28-14-1615	Gear Case	(1)
	18	31-55-0030 Coil Shield	(1)	54	42-24-0095	Spindle Bearing - Front (See Note)	(1)
	19	23-16-0456 Field Insulator	(1)	55	02-50-1640	Needle Bearing	(1)
	20	18-30-0300 120V Field	(1)	★ 56	45-06-0300	Felt Seal	(1)
	21	49-96-0070 5/32" Socket Wrench	(1)	★ 57	44-86-0370	Seal Retainer	(1)
★	22	16-30-0425 120V Armature (Includes Fig. No. 23)	(1)	★ 58	06-95-0050	4-40 x 3/16 Pan Hd. Taptite Screw	(2)
	23	22-84-0530 Fan Assembly	(1)	59	06-81-1005	8-32 x 1-3/8 Fil. Hd. Sem. Screw	(2)
★	24	02-04-0911 Ball Bearing	(1)	60	06-81-1010	8-32 x 1-7/8 Fil. Hd. Sem. Screw	(2)
	25	31-05-0050 Baffle	(1)	61	06-97-3400	Lock Washer	(2)
	26	06-57-2975 8-32 Flexlock Hex Nut	(2)	62	30-10-1020	Spindle Block	(1)
	27	12-99-0365 Nameplate Blank	(1)				
	28	06-85-0200 Nameplate Screw	(2)				
★	29	06-95-0216 8-16 x 5/8 Plastite Screw	(2)				
★	30	31-17-0155 Cord Clamp	(1)				
★	31	31-44-1305 L.H. Half - D Handle	(1)				
	32	06-55-0835 8-32 Hex Nut	(5)				
	33	28-28-0342 Diaphragm	(1)				
	34	06-81-0919 8-32 x 5/8 Fil. Hd. Sem Screw	(1)				
	35	06-81-0905 8-32 x 1/2 Fil. Hd. Sem Screw (See Note)	(2)				
	36	02-04-1510 Ball Bearing	(1)				

**FIG. NOTES**

- 35 Apply Type 242 Blue Loctite
- 37, 47, 48 - Burr Side Out
- 40 V-Notch Press In From Diaphragm Side

**LUBRICATION**

- 2-1/2 Oz. Type "B" Lubricant - Gear Case
- 1/2 Oz. Type "A" Lubricant - Bearing Plate/Intermediate Gear