



SERVICE PARTS LIST

BULLETIN NO.
54-40-4258

SPECIFY CATALOG NO. AND SERIAL NO. WHEN ORDERING PARTS		REVISED BULLETIN 54-40-4257	DATE Nov. '86
TWO SPEED SAWZALL		WIRING INSTRUCTION	
CATALOG NO. 6511	STARTING SERIAL NO. 460-838000	58-01-0261	

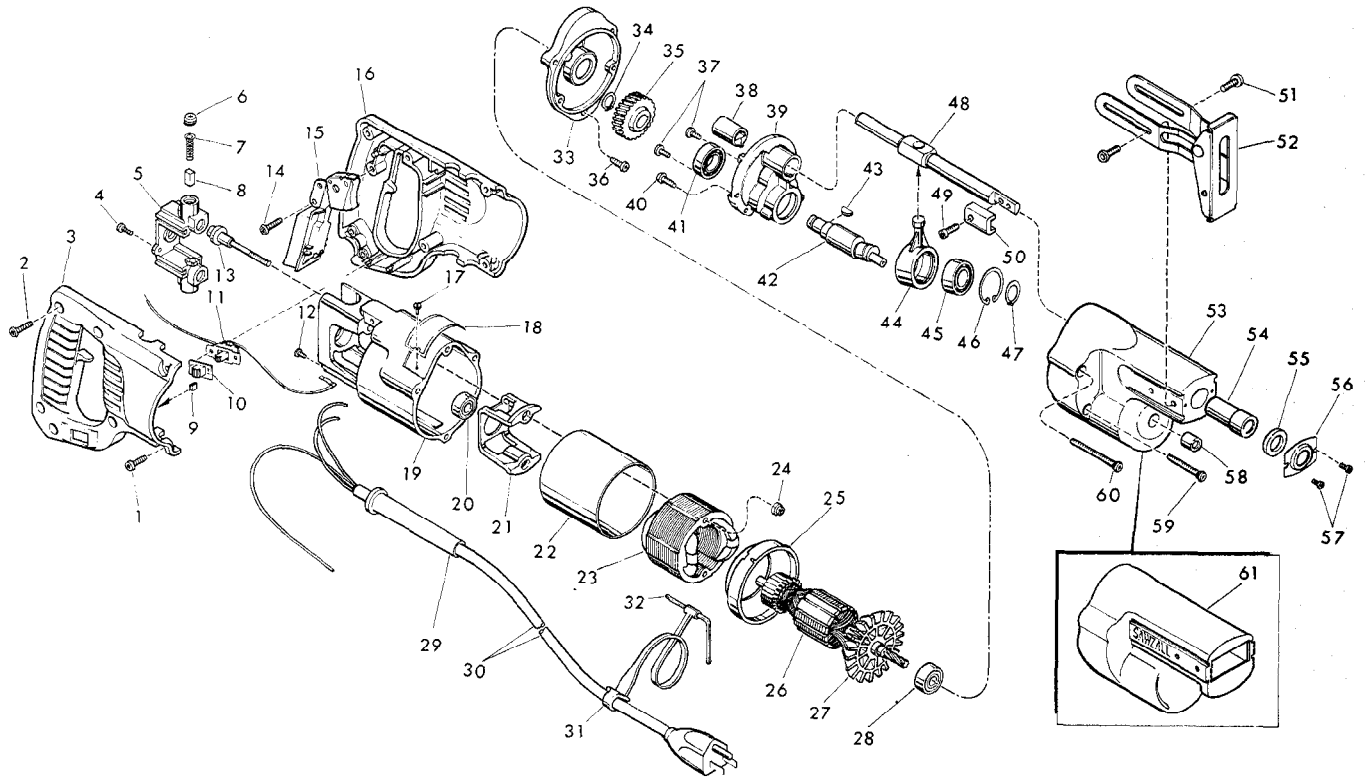


FIG.	PART NO.	DESCRIPTION OF PART	NO. REQ.	FIG.	PART NO.	DESCRIPTION OF PART	NO. REQ.
★ 1	06-82-5316	8-32 x 1/2" Slot Pan Hd. Torx Screw	(4)	35	32-40-1920	Intermediate Gear	(1)
★ 2	06-82-7260	7-18 x 5/8" Pan Hd. Plastite Torx Screw	(5)	36	06-82-0015	8-32 x 5/8" Fil. Hd. Taptite Torx Screw	(1)
★ 3	31-44-1466	Right Handle Half	(1)	37	06-95-0075	6-32 x 3/8" Truss Hd. Taptite Screw	(2)
4	06-95-0075	6-32 x 3/8" Truss Hd. Taptite Screw	(2)	38	42-24-0250	Rear Spindle Bearing	(1)
5	22-22-1330	Brush Holder Assembly	(1)	39	28-72-1002	Bearing Plate	(1)
6	23-44-0190	Brush Retaining Cap	(2)	40	06-82-0020	8-32 x 1/2" Fil. Hd. Taptite Torx Screw	(2)
7	23-52-0160	Brush Spring	(2)	41	02-04-1510	Ball Bearing	(1)
8	22-16-0275	Carbon Brush	(2)	42	36-92-0670	Wobble Shaft	(1)
★ 9	42-38-0240	Bumper	(2)	43	06-42-1200	Woodruff Key	(1)
★ 10	31-12-0190	Switch Cap	(1)	44	30-72-0060	Wobble Plate	(1)
★ 11	23-66-1451	Switch Assembly	(1)	45	02-04-1510	Ball Bearing	(1)
12	06-95-5150	6-32 x 1/4" Hex Hd. Taptite Sems	(1)	46	34-80-2355	Internal Retaining Ring	(1)
13	06-81-1058	8-32 x 2.19 Field Bolt	(2)	47	34-60-1200	Retaining Ring	(1)
14	06-82-7260	7-18 x 5/8" Pan Hd. Plastite Torx Screw	(1)	48	38-50-5410	Reciprocating Spindle	(1)
15	23-66-0167	On - Off Switch	(1)	49	06-75-2400	10 - 32 x 1/2" Pan Hd. Taptite Sems	(1)
★ 16	31-44-1471	Left Handle Half	(1)	50	42-68-0073	Blade Clamp	(1)
17	06-85-0200	Nameplate Screw	(2)	51	06-96-6270	10-24 x 1/2" Pan Hd. Taptite Sems	(4)
★ 18	12-99-0362	Nameplate Blank	(1)	52	45-16-0495	Pivot Shoe Assembly	(1)
19	28-50-6201	Motor Housing	(1)	★ 53	28-14-1780	Gear Case	(1)
20	02-04-0845	Ball Bearing	(1)	★ 54	42-24-0320	Spindle Bearing	(1)
21	31-55-0030	Coil Shield	(1)	55	45-06-0300	Felt Seal	(1)
22	23-16-0456	Field Insulator	(1)	56	44-86-0370	Seal Retainer	(1)
23	18-30-0300	120V Field	(1)	57	06-95-0050	4-40 x 3/16" Pan Hd. Taptite Screw	(2)
24	06-57-2975	8-32 Flexlock Hex Nut	(2)	58	02-50-1640	Needle Bearing	(1)
25	31-05-0050	Baffle	(1)	★ 59	06-82-5525	8-32 x 1-3/8" Fil. Hd. Taptite Torx Screw	(2)
26	16-30-0425	120V. Armature (Includes Fig. No. 27)	(1)	★ 60	06-82-5530	8-32 x 1-7/8" Fil. Hd. Taptite Torx Screw	(2)
27	22-84-0530	Fan Assembly	(1)	61	45-12-0305	Gear Case Insulator	(1)
28	02-04-0911	Ball Bearing	(1)				
29	44-76-0150	Cord Protector	(1)				
30	22-64-0155	Cord Set	(1)				
31	48-66-4080	Key Holder	(1)				
32	49-96-0070	5/32" Socket Wrench	(1)				
33	28-28-0345	Diaphragm	(1)				
34	34-60-0920	External Retaining Ring	(1)				

FIG. NOTES

- 40 Apply Type 242 Blue Loctite
- 34, 46, 47 - Burr Side Out
- 38 V-Notch Press In From Diaphragm Side

LUBRICATION

- 2-1/2 Oz. Type "B" Lubricant - Gear Case
- 1/2 Oz. Type "A" Lubricant - Bearing Plate/Intermediate Gear