



SERVICE PARTS LIST

**BULLETIN NO.
54-40-4259**

SPECIFY CATALOG NO. AND SERIAL NO. WHEN ORDERING PARTS		REVISED BULLETIN	DATE
TWO SPEED SAWZALL		54-40-4258	Mar. '93
CATALOG NO. 6511	STARTING SERIAL NO. 460-1277363	WIRING INSTRUCTION 58-01-0262	

EXAMPLE:
Component Parts (Small #)
Are Included When Ordering
The Assembly (Large #).

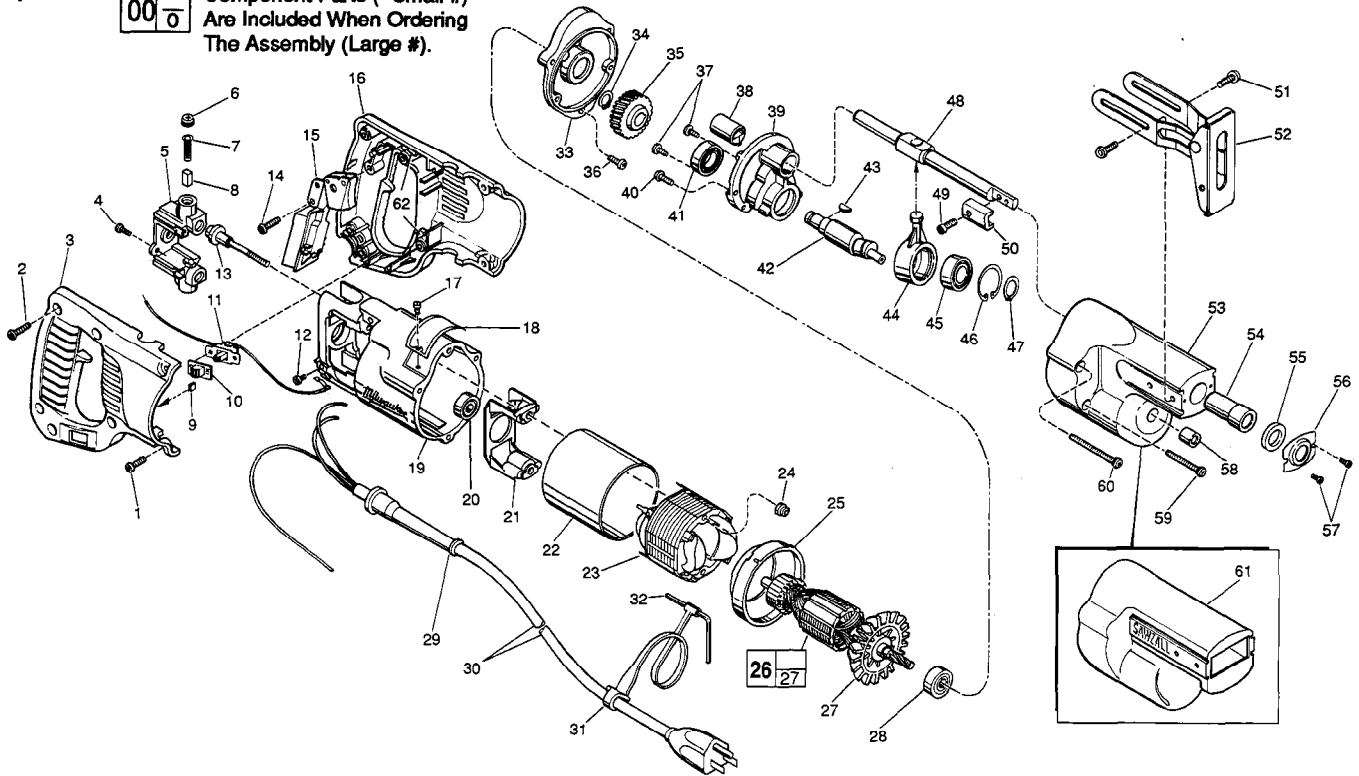


FIG.	PART NO.	DESCRIPTION OF PART	NO. REQ.	FIG.	PART NO.	DESCRIPTION OF PART	NO. REQ.	
	1	06-82-5316	8-32 x 1/2" Slot Pan Hd. T-20	(4)	38	42-24-0250	Rear Spindle Bearing	(1)
★	2	06-82-7270	8-16 x 5/8" Pan Hd. Plastite T-20	(5)	39	28-72-1002	Bearing Plate	(1)
★	3	31-44-1650	Right Handle Half	(1)	40	06-82-0020	8-32 x 1/2" Fil. Hd. Taptite T-20	(2)
	4	06-95-0075	6-32 x 3/8" Truss Hd. Taptite Screw	(2)	41	02-04-1510	Ball Bearing	(1)
★	5	22-22-1380	Brush Holder Assembly	(1)	★42	36-92-0720	Wobble Shaft	(1)
	6	23-44-0190	Brush Retaining Cap	(2)	43	06-42-1200	Woodruff Key	(1)
	7	23-52-0160	Brush Spring	(2)	44	30-72-0060	Wobble Plate	(1)
	8	22-16-0275	Carbon Brush	(2)	45	02-04-1510	Ball Bearing	(1)
	9	42-38-0240	Bumper	(2)	46	34-80-2355	Internal Retaining Ring	(1)
	10	31-12-0190	Switch Cap	(1)	47	34-60-1200	Retaining Ring	(1)
★	11	23-66-2020	Switch Assembly	(1)	48	38-50-5410	Reciprocating Spindle	(1)
	12	06-95-5150	6-32 x 1/4" Hex Hd. Taptite Sems	(1)	49	06-75-2400	10-32 x 1/2" Socket Hd. Screw	(1)
★	13	06-81-1060	8-32 x 2-1/4" Field Bolt	(2)	50	42-68-0073	Blade Clamp	(1)
★	14	06-82-7270	8-16 x 5/8" Pan Hd. Plastite T-20	(1)	51	06-95-6270	10-24 x 1/2" Pan Hd. Taptite Sems	(4)
	15	23-66-0167	On - Off Switch	(1)	52	45-16-0495	Pivot Shoe Assembly	(1)
★	16	31-44-1655	Left Handle Half	(1)	53	28-14-1780	Gear Case	(1)
	17	06-85-0200	Nameplate Screw	(2)	54	42-24-0320	Spindle Bearing	(1)
★	18	12-99-0520	Nameplate Blank	(1)	55	45-06-0300	Felt Seal	(1)
★	19	28-50-6211	Motor Housing	(1)	56	44-86-0370	Seal Retainer	(1)
	20	02-04-0845	Ball Bearing	(1)	57	06-95-0050	4-40 x 3/16" Pan Hd. Taptite Screw	(2)
★	21	31-55-0190	Coil Shield	(1)	58	02-50-1640	Needle Bearing	(1)
	22	23-16-0456	Field Insulator	(1)	59	06-82-5525	8-32 x 1-3/8" Fil. Hd. Taptite T-20	(2)
★	23	18-31-0200	120 V. Field	(1)	60	06-82-5530	8-32 x 1-7/8" Fil. Hd. Taptite T-20	(2)
	24	06-57-2975	8-32 Flexlock Hex Nut	(2)	61	45-12-0305	Gear Case Insulator	(1)
	25	31-05-0050	Baffle	(1)	★62	14-46-1001	Foam Slug Kit - 10 Slugs	(2)
	26	16-30-0425	120 V. Armature	(1)				
★	27	22-84-0531	Fan Assembly	(1)				
	28	02-04-0911	Ball Bearing	(1)	FIG. NOTES			
★	29	44-76-0210	Cord Protector	(1)	34,46	Burr Side Out.		
★	30	22-64-3190	Cord Set	(1)	47			
	31	48-66-4080	Key Holder	(1)	38	V-Notch Press In From Diaphragm Side.		
	32	49-96-0070	5/32" Socket Wrench	(1)	40	Apply Type 242 Blue Loctite.		
★	33	28-28-0350	Diaphragm	(1)				
	34	34-60-0920	External Retaining Ring	(1)	FIG. LUBRICATION			
	35	32-40-1920	Intermediate Gear	(1)	35,39	1/2 Oz. Type "A" Grease, No. 49-08-0800.		
	36	06-82-0015	8-32 x 5/8" Fil. Hd. Taptite T-20	(1)	53	2-1/2 Oz. Type "B" Grease, No. 49-08-0600.		
	37	06-95-0075	6-32 x 3/8" Truss Hd. Taptite Screw	(2)				

MILWAUKEE ELECTRIC TOOL CORPORATION
13135 W. LISBON RD., BROOKFIELD, WI 53005