



SERVICE PARTS LIST

ELECTRONICALLY CONTROLLED SAWZALL

Catalog No. **6505**

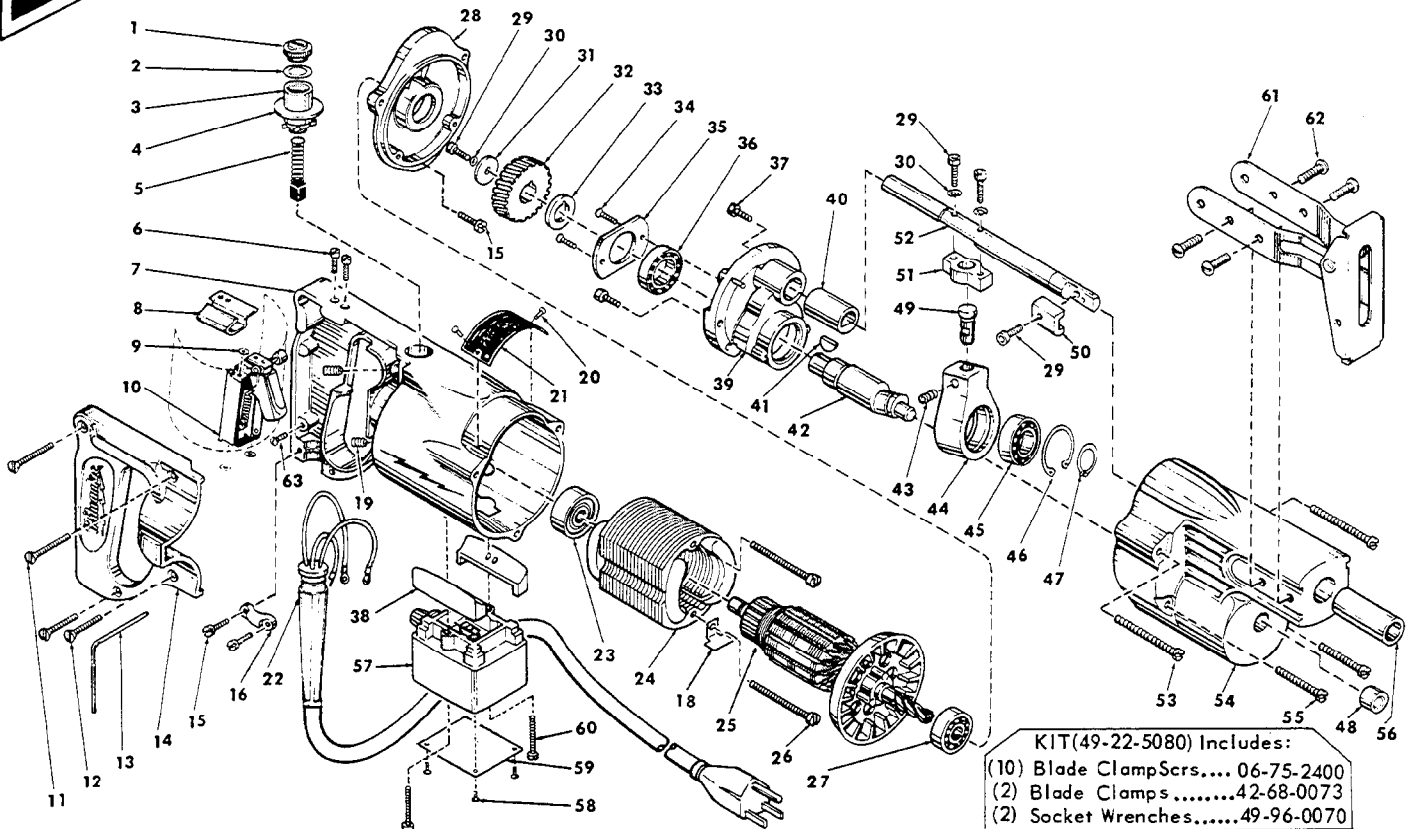
Starting Serial No. **335-4212**

Specify Catalog and Serial No. when ordering parts

BUL. 54-40-4102

REVISED BUL. 54-40-4101 DATE Nov. '73

WIRING INSTRUCTIONS **58-01-0540**



KIT(49-22-5080) Includes:
 (10) Blade Clamp Screws.... 06-75-2400
 (2) Blade Clamps.....42-68-0073
 (2) Socket Wrenches.....49-96-0070

FIG.	PART NO.	DESCRIPTION OF PART	NO. REQ.
1	23-44-0060	Brush Retaining Screw	(2)
2	23-86-0050	Washer	(2)
3	22-22-0080	Brush Holder	(2)
4	23-86-0110	Washer	(2)
5	22-18-0100	Carbon Brush	(2)
6	06-81-5800	6-32x5/16 Fil. Hd. Sem	(2)
7	28-50-4492	Motor Housing (Includes Fig. Nos. 11, 12 and 14)	(1)
★ 8	42-68-0225	Wire Clamp	(1)
9	06-97-1800	Lockwasher	(4)
10	23-66-0230	Switch	(1)
11	06-81-3750	8-32x1 Oval Head Screw	(2)
12	06-81-3700	8-32x7/8 Oval Head Screw	(2)
13	49-96-0070	Socket Screw Wrench	(1)
★ 14	28-20-3601	Switch Cover Plate	(1)
15	06-81-6150	8-32x1/2 Fil. Hd. Sem	(3)
16	28-17-0400	Clamp Strap	(1)
★ 17	48-66-4080	Socket Wrench Holder (Not Shown)	(1)
18	42-14-0100	Wire Baffle	(1)
19	06-83-2650	1/4-20x3/8 Knrl. Set Screw	(2)
20	06-85-0200	6x1/4 Rd. Hd. Type Z Screw	(2)
★ 21	12-99-0031	Nameplate	(1)
22	22-64-0170	Cord Set	(1)
23	02-04-0970	Ball Bearing	(1)
24	18-42-1180	115 Volt Field	(1)
25	16-42-1340	115 Volt Armature	(1)
26	06-81-6600	8-32x1-3/4 Fil. Hd. Sem	(2)
27	02-04-0940	Ball Bearing	(1)
28	28-28-0341	Diaphragm	(1)
29	06-75-2400	10-32x1/2 Skt. Hd. Screw	(4)
30	06-97-3400	Lockwasher	(3)
31	45-88-0180	Retaining Washer	(1)
32	32-40-1101	Intermediate Gear	(1)

FIG.	PART NO.	DESCRIPTION OF PART	NO. REQ.
33	45-36-0121	Gear Spacer	(1)
34	06-81-2500	6-32x3/8 Flat Hd. Screw	(2)
35	44-86-0090	Bearing Retainer	(1)
36	02-04-1510	Ball Bearing	(1)
★ 37	06-81-6150	8-32x1/2 Fil. Hd. Sem	(2)
38	42-04-0140	Control Housing Adapter	(2)
39	28-72-1001	Bearing Plate	(1)
40	42-24-0101	Spindle Bearing	(1)
41	06-42-1200	Woodruff Key	(1)
42	36-92-0601	Wobble Shaft	(1)
43	06-83-2645	1/4-20x3/8 Hdls. Set Screw	(1)
44	28-72-9001	Wobble Plate (Includes Fig. 43)	(1)
45	02-04-1510	Ball Bearing	(1)
★ 46	34-80-2355	Retaining Ring	(1)
47	34-60-1200	Retaining Ring	(1)
48	02-50-1640	Needle Bearing	(1)
49	45-58-0050	Ball End Stud	(1)
50	42-68-0073	Blade Clamp	(1)
★ 51	30-10-1010	Spindle Block	(1)
52	38-50-2002	Spindle	(1)
53	06-81-6650	8-32x1-3/4 Fil. Hd. Sem	(2)
54	28-14-0571	Gear Case	(1)
55	06-81-6500	8-32x1-3/8 Fil. Hd. Sem	(2)
56	42-24-0091	Spindle Bearing	(1)
57	14-38-0290	Housing Assembly (Includes Fig. Nos. 58, 59 and 60)	(1)
58	06-85-0050	4x1/4 Pan Head Type B Screw	(4)
59	-	Nameplate	(1)
60	06-81-5875	6-32x1-1/8 Fil. Hd. Sem	(2)
61	45-16-0055	Pivot Shoe Assembly	(1)
62	06-81-9525	10-24x1/2 Truss Head Sem	(4)
63	06-81-8625	6-32x1/4 Ground Screw	(1)