



SERVICE PARTS LIST

BULLETIN NO.
55-40-6550

SPECIFY CATALOG NO. AND SERIAL NO. WHEN ORDERING PARTS		REVISED BULLETIN	DATE
254 mm COMPOUND MITER SAW			Aug. 2010
CATALOG NO.	6494-04 6494-50	STARTING SERIAL NO.	840A
		WIRING INSTRUCTION	58-03-1450

EXAMPLE:
Component Parts (Small #) Are Included
When Ordering The Assembly (Large #).

120	7	8	10	15	16	18	19	21	22
	24	42	43	47	105	106	109	111	112

121	2	9	11	12	13	23	45	63
	65	66	68	76	77	83	90	102

123	116	117
	118	

124	17	19x
-----	----	-----

125	20	12x
-----	----	-----

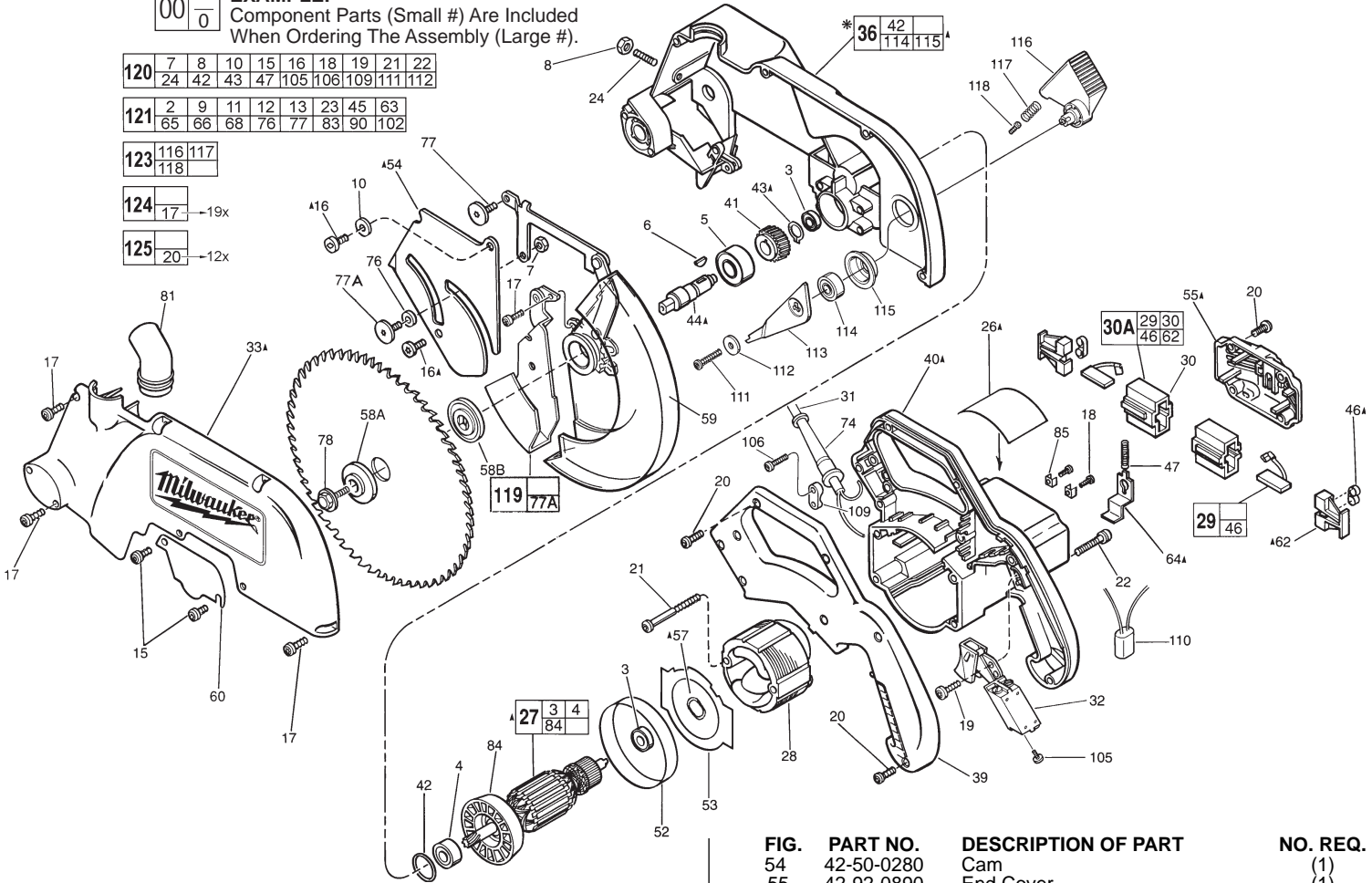


FIG.	PART NO.	DESCRIPTION OF PART	NO. REQ.
3	02-04-0845	Ball Bearing	(2)
4	02-04-1229	Ball Bearing	(1)
5	02-04-2040	Ball Bearing	(1)
6	06-42-2400	Woodruff Key	(1)
7	06-55-1525	1/4"-20 Hex Nut	(1)
8	06-55-1985	5/16"-18 Hex Nut	(1)
10	45-88-0660	Washer	(1)
15	06-82-5560	10-24 x 1/2" Pan Hd. Slit. Tapt. T-25	(2)
16	06-82-5338	1/4-20 x 1/2" Pan Hd. Slit. Tapt. T-30	(2)
17	06-82-5411	10-24 x 5/8" Pan Hd. Slit. Tapt. T-25	(10)
18	06-82-7212	4-20 x 1/4" Pan Hd. Plastite T-10	(2)
19	06-82-7226	6-19 x 5/16" Pan Hd. Slit. Plast. T-15	(1)
20	06-82-7270	8-16 x 5/8" Pan Hd. Slit. Plast. T-20	(12)
21	06-82-7453	8-16 x 2-1/4" Pan Hd. Slit. Plast. T-20	(2)
22	06-82-9024	10-24 x 1-3/4" Pan Hd. Slit. Tapt. T-25	(4)
24	06-83-3100	5/16-18 x 1" Set Screw T-25	(1)
26	12-20-0091	Service Nameplate	(1)
27	16-74-0420	Armature	(1)
28	18-74-0420	Field	(1)
29	22-18-0397	Carbon Brush	(2)
30	22-20-0800	Brush Tube	(2)
30A	22-20-0803	Brush Tube Assembly	(2)
31	22-64-4523	Cord Set	(1)
31	22-64-0285	Cord Set (Australia)	(1)
32	23-66-1810	Switch Assembly	(1)
33	25-20-1320	Upper Guard Cover	(1)
36	28-14-2214	Upper Guard Gear Case	(1)
39	31-44-1725	Handle Half	(1)
40	31-50-1055	Motor Housing Service Kit	(1)
41	32-75-3350	Gear	(1)
42	34-40-1375	1-1/4" O-Ring	(1)
43	34-60-2560	Retaining Ring	(1)
44	38-50-5840	Spindle	(1)
46	40-50-8160	Coil Spring	(2)
47	40-50-8170	Locking Spring	(1)
52	42-14-0350	Baffle	(1)
53	42-14-0355	Baffle	(1)

FIG.	PART NO.	DESCRIPTION OF PART	NO. REQ.
54	42-50-0280	Cam	(1)
55	42-92-0890	End Cover	(1)
57	45-88-0577	Wave Washer	(1)
58A	43-34-0725	Inner Blade Flange	(1)
58B	43-34-0726	Outer Blade Flange	(1)
59	43-54-0705	Lower Guard Assembly	(1)
60	43-54-0700	Blade Screw Guard	(1)
62	43-72-0180	Spring Holder	(2)
64	44-10-0310	Locking Lever	(1)
74	44-76-0210	Cord Protector	(1)
76	44-96-0130	Roller	(1)
77	45-04-0850	Shoulder Screw	(1)
77A	45-04-0850	Shoulder Screw	(1)
78	05-76-0860	Blade Screw	(1)
81	45-76-0331	Dust Tube	(1)
84	22-84-0850	Fan	(1)
85	23-74-1150	Terminal	(2)
105	05-89-0045	Switch Screw	(4)
106	05-78-0571	Cord Clamp Screw	(2)
109	31-17-0190	Cord Clamp	(1)
110	22-33-0456	Suppressor	(1)
111	06-82-7271	6-19 x 7/8" Plastite T-15	(1)
112	45-88-0603	Lock Plate Washer	(1)
113	44-66-6075	Lock Plate	(1)
114	02-04-0910	Bearing	(1)
115	42-96-0135	Bearing Cup	(1)
116	42-42-0470	Lock Release Lever	(1)
117	40-50-8615	Button Spring	(1)
118	06-75-2000	8-32 x 3/8" Socket Head Screw	(1)
119	28-41-1005	Rear Guard Assembly	(1)
120	14-46-9100	Hardware Kit	(1)
121	14-46-9120	Hardware Kit	(1)
123	14-46-9105	Lock Release Kit	(1)
124	14-46-9110	Hardware Kit	(1)
125	14-46-9115	Hardware Kit	(1)

MILWAUKEE ELECTRIC TOOL CORPORATION
13135 W. LISBON RD., BROOKFIELD, WI 53005
Drwg. 7

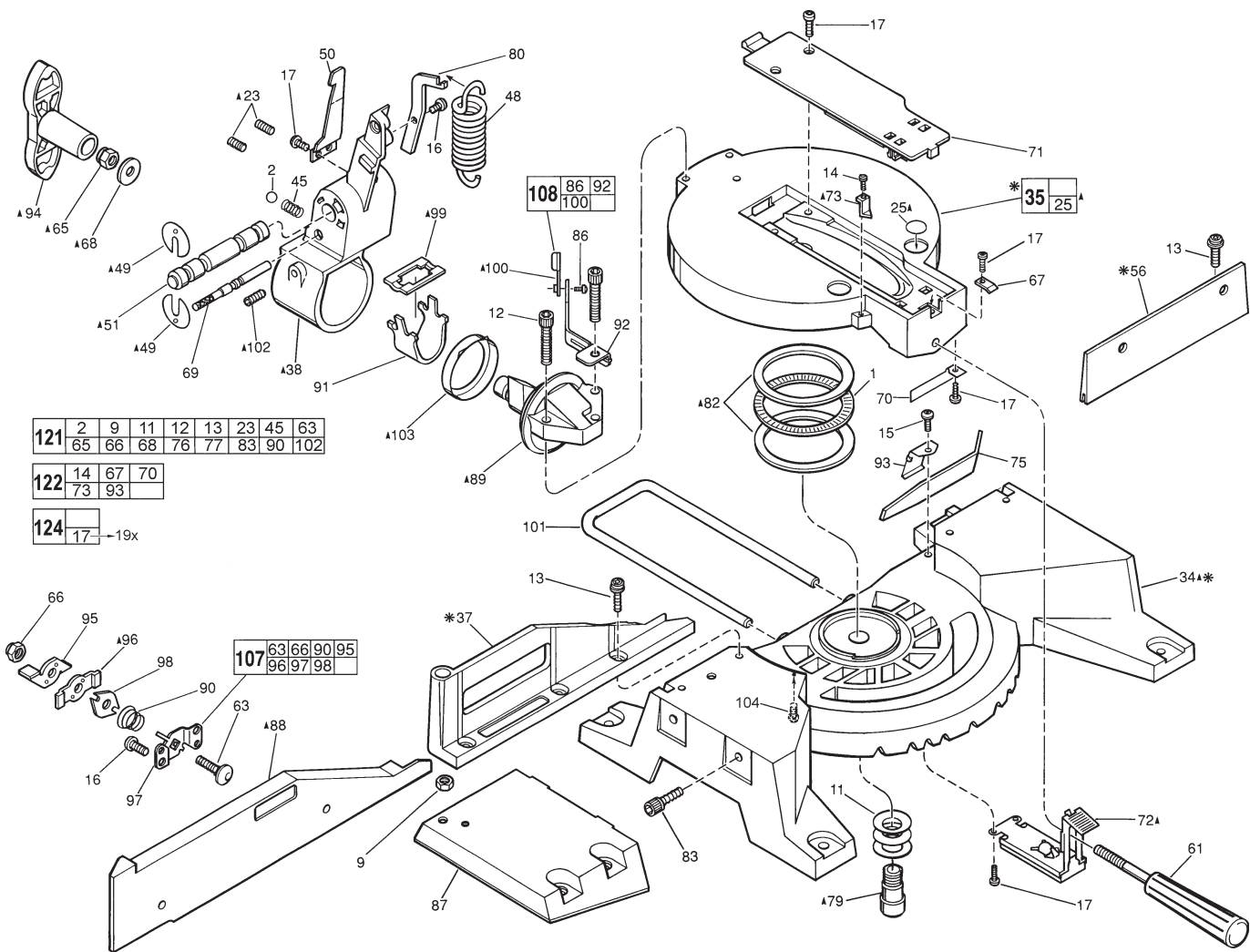
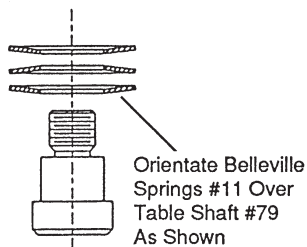
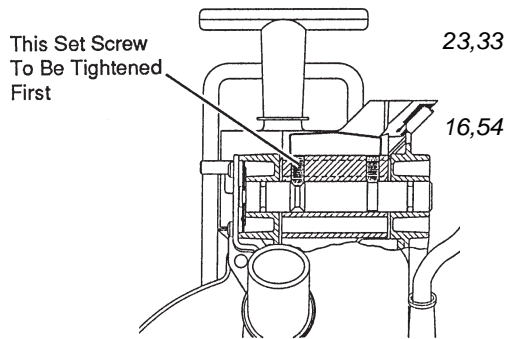
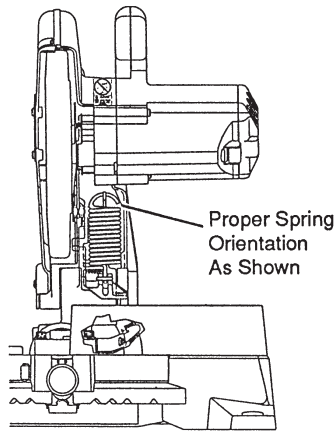


FIG.	PART NO.	DESCRIPTION OF PART	NO. REQ.
1	02-80-0130	Needle Thrust Bearing	(1)
2	02-02-2040	7/16" Steel Ball	(1)
9	06-55-2710	7/16"-14 Hex Nut	(1)
11	40-50-8620	Belleville Spring	(3)
12	06-81-3174	5/16-18 x 1-1/2" Socket Hd. Tapt. Sems	(3)
13	45-04-0910	5/16-18 x 7/8" Pan Hd. Tapt. T-30	(5)
14	06-82-5270	6-32 x 1/4" Pan Hd. Slit. Tapt. T-15	(1)
15	06-82-5314	10-24 x 1/2" Pan Hd. Tapt. T-25	(1)
16	06-82-5338	1/4-20 x 1/2" Pan Hd. Slit. Tapt. T-30	(3)
17	06-82-5411	10-24 x 5/8" Pan Hd. Slit. Tapt. T-25	(8)
23	06-83-3150	5/16-18 x 1/2" Hex Socket	(2)
25	10-15-9460	Warning Label	(2)
34	28-06-1080	Base	(1)
35	28-06-1045	Table Assembly	(1)
37	28-35-0020	Left Fence	(1)
38	28-90-0250	Pivot Support	(1)
45	40-50-8040	Spring	(1)
48	40-50-8180	Spring	(1)
49	40-50-8190	Retaining Spring	(2)
50	40-50-8700	Leaf Spring	(1)
51	42-12-0160	Axle	(1)
56	28-35-0030	Right Fence	(1)
61	43-62-1050	Locking Handle	(1)
63	06-10-1153	5/16-18 x 1-1/4" Carriage Bolt	(1)
65	06-57-4550	3/8-16 Locknut	(1)
66	06-57-5045	5/16-18 Locknut	(1)
67	44-20-0260	Detent Lock	(1)
68	45-88-1040	Washer	(1)
69	44-60-1411	Lock Pin	(1)
70	44-66-5920	Locking Plate	(1)
71	14-46-9145	Kerf Plate	(1)
72	44-66-5945	Detent Lever Assembly	(1)
73	44-72-0010	Pointer	(1)
75	14-46-9130	Box Wrench	(1)

FIG.	PART NO.	DESCRIPTION OF PART	NO. REQ.
79	45-08-0330	Table Shaft	(1)
80	45-60-0530	Spring Support	(1)
82	45-88-8540	Washer	(2)
83	06-81-3172	5/16-18 x 1" Socket Hd. Tapt. Sems	(2)
86	06-82-8844	8-32 x 3/8" Pan Hd. Mach. T-20	(1)
87	28-06-1060	Base Extension	(1)
88	28-35-0040	Adjustable Fence Assembly	(1)
89	28-90-0265	Bevel Support Assembly	(1)
90	40-50-8610	Conical Spring	(1)
91	40-50-8630	Spring	(1)
92	42-20-0690	Pointer Base	(1)
93	42-70-5141	Blade Wrench Clip	(1)
94	43-62-1090	Handle	(1)
95	44-10-0330	Lever	(1)
96	44-66-6060	Clamp Plate	(1)
97	44-66-6070	Mounting Plate	(1)
98	44-66-6080	Detent Plate	(1)
99	44-66-6100	Keeper Plate	(1)
100	44-72-0020	Pointer (Bevel Scale)	(1)
101	44-94-0350	Guide Rod	(1)
102	06-83-3000	5/16-18 x 3/4" Set Screw T-25	(2)
103	45-88-8545	Beveled Thrust Washer	(1)
104	06-82-5560	10-24 x 1/2" Pan Hd. Slit. Tapt. T-25	(1)
107	14-46-2060	Clamp Mechanism Kit	(1)
108	44-72-0025	Pointer Assembly	(1)
121	14-46-9120	Hardware Kit	(1)
122	14-46-9125	Hardware Kit	(1)
124	14-46-9110	Hardware Kit	(1)
	14-46-9155	Work Clamp Kit (Not Shown)	(1)
	14-46-9165	Extension Kit (Not Shown)	(1)



- | FIG. | NOTE |
|-------------|--|
| 79 | APPLY RED LOCKING SEALANT TO TWO THREADS OF FIG. 79, (TABLE SHAFT), PRIOR TO ASSEMBLY. TORQUE TO 40.7 N-m. |
| 82 | APPLY THIN FILM OF TYPE "L" GREASE, NO. 49-08-4170, TO BOTH SIDES OF FIG. 82, (WASHERS). |
| 34,79 | APPLY (3.5 g) OF TYPE "L" GREASE, NO. 49-08-4170, UNDER THE HEAD OF FIG. 79, (TABLE SHAFT), ALSO APPLY A THIN FILM OF "L" GREASE TO THE O.D. OF THE TABLE SHAFT AND TO THE I.D. OF THE CENTER BORE OF FIG. 34, (BASE), PRIOR TO ASSEMBLY. |
| 36,51 | APPLY (1.7 g) OF TYPE "L" GREASE, NO. 49-08-4170, TO THE (2) 3.2mm WIDE GROOVES OF FIG. 51, (AXLE), ALSO APPLY A THIN FILM OF "L" GREASE TO THE O.D. OF FIG. 51, (AXLE - NOT BETWEEN THE (2) LOCATING GROOVES) AND TO THE I.D. OF THE (2) PIVOTING HUBS OF FIG. 36, (UPPER-GUARD/GEARCASE), PRIOR TO ASSEMBLY. |
| 23,33 | WARNING- ONLY TIGHTEN FIG. 23, (5/16 SET SCREW), AFTER ASSEMBLY OF FIG. 33, (UPPER-GUARD COVER). |
| 16,54 | WHEN ASSEMBLING FIG. 54, (CAM) WITH FIG. 16, (SCREWS), LIGHTLY INSERT LOWER SCREW FIRST AND THEN PIVOT CAM COUNTERCLOCKWISE ABOUT LOWER SCREW UNTIL IT BOTTOMS OUT ON THE RIB OF THE GEARCASE, THEN INSERT UPPER SCREW AND TIGHTEN BOTH UPPER AND LOWER SCREWS. SPACE BETWEEN FIG. 119, (REAR GUARD ASSEMBLY) AND FIG. 59, (LOWER GUARD ASSEMBLY) SHOULD BE LESS THAN 3mm. |
| 33,51 | APPLY A DAB OF TYPE "L" GREASE, NO. 49-08-4170, TO THE COVER END OF FIG. 51, (AXLE), PRIOR TO ASSEMBLY OF FIG. 33, (UPPER-GUARD COVER). |
| 43 | ASSEMBLE FIG. 43, (RETAINING RING), WITH THE CONCAVE BOW OF THE RING TOWARD THE GEAR. |
| 36 | PLACE (14 g) OF TYPE "Y" GREASE, NO. 49-08-5270, IN THE PINION POCKET OF FIG. 36, (UPPER-GUARD/GEARCASE). |
| 27,40,57 | PLACE FIG. 57, (WAVE WASHER), INTO FIG. 40, (MOTOR HOUSING), PRIOR TO ASSEMBLING ONTO FIG. 27, (ARMATURE). |

CHECK OPERATION OF LOWER GUARD MECHANISM:

- A. TO VERIFY THAT LOWER GUARD FREELY RETRACTS AND RETURNS TO THE START POSITION, ACTUATE SAW AS IF MAKING CUT.
- B. TO VERIFY THAT FIG. 50, (LEAF SPRING) IS FUNCTIONING PROPERLY, RETRACT LOWER GUARD BY HAND WITH SAW HEAD UP, WHEN RELEASED, THE GUARD SHOULD RETURN TO IT'S START POSITION.
- C. YOU SHOULD NOT BE ABLE TO LOWER THE SAW HEAD AND MOVE THE GUARDING WITHOUT FIRST DEPRESSING FIG. 116, (LOCK RELEASE LEVER).

FIG. NOTES:

- | | |
|-------|--|
| 46,62 | FIG. 46, (COIL SPRING), MUST BE ORIENTED IN FIG. 62, (SPRING HOLDER), SUCH THAT THE SADDLE OF THE SPRING IS FACING THE OPEN END OF FIG. 62, (SPRING HOLDER). |
| 49 | FIG. 49, (RETAINING SPRING), RELATIVE ORIENTATION TO BE 180° APART - DIMPLES TO ENGAGE SLOTS. |
| 55 | BRUSH SHUNT TO BE POSITIONED SO AS NOT TO INTERFERE WITH FIG. 55, (END COVER), DURING ASSEMBLY. |
| 102 | APPLY RED LOCKING SEALANT TO TWO THREADS OF FIG. 102, (SET SCREWS), PRIOR TO ASSEMBLY. |

SEE BACK FOR ADDITIONAL NOTES

- 103 APPLY FILM OF TYPE "L" GREASE, NO. 49-08-4170, TO BOTH SIDES OF FIG. 103, (BEVELED THRUST WASHER), PRIOR TO ASSEMBLY.
- 68,89 APPLY THIN FILM OF TYPE "L" GREASE, NO. 49-08-4170, TO BOTH SIDES OF FIG. 68, (WASHER), AND TO THREADS ON FIG. 89, (BEVEL SUPPORT).
- 65,68 WHEN ASSEMBLING FIG. 65, (LOCKNUT), FACE OF FIG. 68, (WASHER) SHOULD BE DEFLECTED AND FIG. 65, (LOCKNUT) MUST BE POSITIONED A MAXIMUM OF ONE HALF TURN FROM THE FULLY LOCKED POSITION.
- 94 HALF FILL POCKET OF FIG. 94, (HANDLE), WITH TYPE "L" GREASE, NO. 49-08-4170, PRIOR TO ASSEMBLY OF HANDLE ONTO TOOL.
- 96 APPLY THIN FILM OF TYPE "L" GREASE, NO. 49-08-4170, TO BOTH SIDES OF FIG. 96, (CLAMP PLATE), PRIOR TO ASSEMBLY.
- 38,89,99 APPLY (7 g) OF TYPE "L" GREASE, NO. 49-08-4170, TO FIG. 99, (KEEPER PLATE), AND ANGLED SURFACES OF FIG. 89, (BEVEL SUPPORT). REMAINING GREASE TO BE PLACED AT THE BOTTOM OF THE CAVITY INSIDE FIG. 38, (PIVOT SUPPORT).