



SERVICE PARTS LIST

BUL. 54-40-3100

ELECTRONICALLY CONTROLLED JIG SAW

REVISED BUL
6334-1

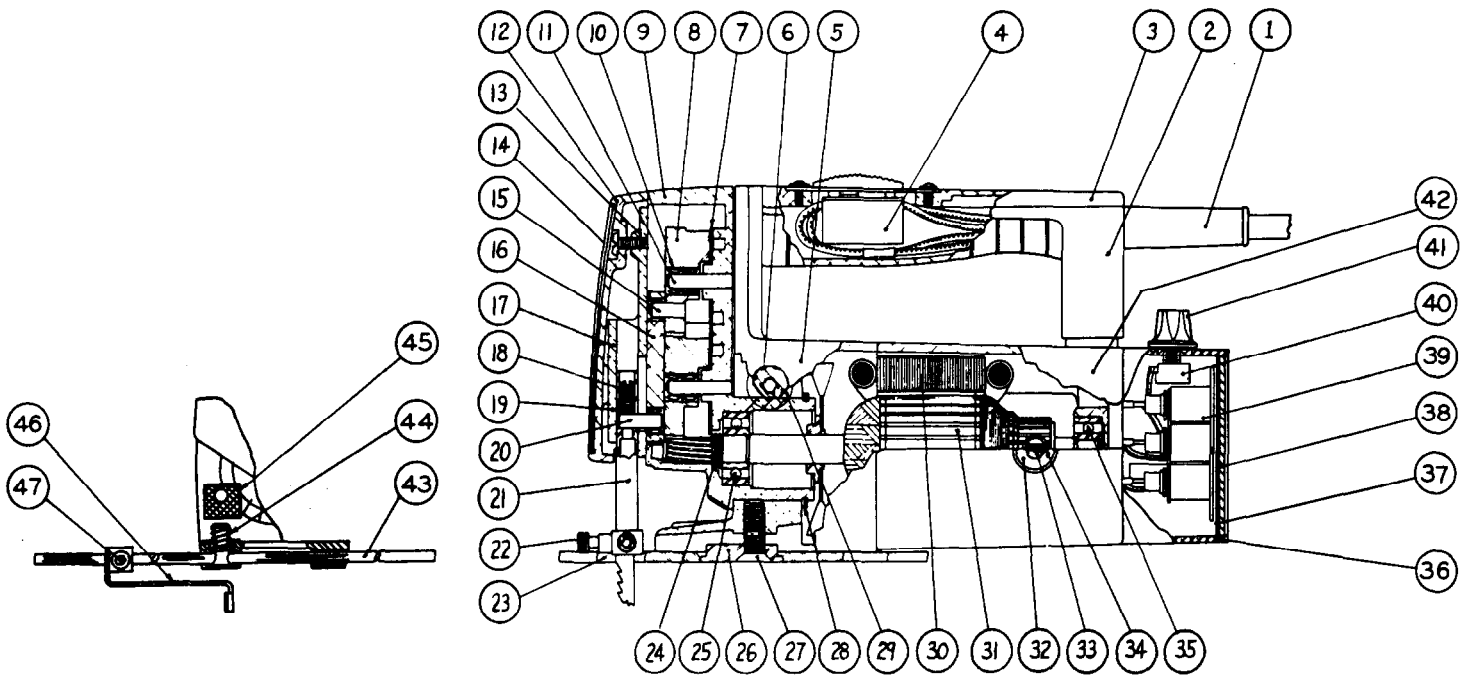
DATE
Feb. '68

Catalog No. **6280**

Starting
Serial No. **334-1001**

WIRING INSTR.

Both Model and Serial No. must be furnished to obtain correct parts.



6280 ELECTRONICALLY CONTROLLED JIG SAW

ILLUSTRATED PARTS

FIG.	PART NO.	DESCRIPTION OF PART	FIG.	PART NO.	DESCRIPTION OF PART	
1	22-64-0220	Cord Set	25	02-04-0940	Ball Bearing (Pinion End)	
2	28-44-9261	Handle	26	45-88-0370	Shoe Adjusting Washer	
3	28-20-3521	Handle Cover	27	06-81-3075	Shoe Adjusting Washer Screw	
4	23-66-0310	Switch	28	34-60-2125	Retaining Ring	
5	14-13-0100	Diaphragm	29	44-68-0100	Locking Plug	
6	06-81-3125	Gear Case Clamping Screw	30	18-22-1090	Field Assembly	
7	45-88-0380	Washer	(2)	31	16-22-1190	Armature Assembly
8	32-48-1001	Mechanism Gear	(2)	32	23-44-0020	Brush Retaining Screws
9	14-30-0220	Gear Case Assembly		33	22-18-0270	Carbon Brush Assembly
10	02-50-1200	Mechanism Needle Bearings	(6)	34	22-22-0050	Brush Holder Assembly
11	44-60-0260	Mechanism Gear Pin(Incl. w/item 9)	(2)	35	02-04-0740	Ball Bearing (Comm. End)
12	28-20-1061	Gear Case Cover		36	43-76-0130	Speed Control Housing
13	42-24-0151	Spindle Bearing Plate		37	23-16-0280	Insulator
14	12-75-1900	Identifying Name Plate		38	12-98-6600	Speed control Name Plate
15	44-60-0250	Connecting Rod Pin		39	23-37-0050	Lexon Speed Control Regulator
16	44-94-0070	Connecting Rod		40	23-38-7550	Variable Speed Control (Incl. in item 39)
17	42-92-0100	Spindle Bearing Plate Cover		41	23-18-0060	Control Knob
18	06-83-2620	Spindle Pin Retaining Screw		42	28-50-4981	Motor Housing
19	45-30-0080	Spindle Pin Retaining Slug		43	44-94-0080	Rip Guide Rod
20	44-60-0270	Spindle Drive Pin		44	45-58-0120	Rip Guide Locking Stud
21	38-50-4110	Spindle Assembly		45	44-40-0210	Rip Guide Locking Nut
22	06-75-1985	Blade Retaining Screws	(3)	46	44-66-0300	Rip Guide End Plate Assy.
23	45-16-0231	Shoe		47	06-75-2000	8-32x3/8 Soc. Hd. Rip Guide End Plate Screw
24	45-28-0090	Grease Slinger				

MISCELLANEOUS PARTS NOT SHOWN

PART NO.	DESCRIPTION OF PART	PART NO.	DESCRIPTION OF PART
06-81-3500	6-32x5/8 Oval Hd. Handle Cover Screw	06-81-5950	6-32x1-7/8 Fil.Hd. Field Sems (2)
06-81-3650	8-32x3/4 Oval Hd. Handle Cover Screws (2)	06-81-3450	6-32x5/16 Oval Hd. Grill Mounting Screw (2)
06-81-6075	8-32x3/8 Fil. Hd. Handle Mounting Sems (2)	06-81-8625	6-32x1/4 (Bronze) Rd.Hd. Ground Sems
06-81-6550	8-32x1-1/2 Fil.Hd. Handle Mounting Sems	06-83-0100	10-32x1/4 Brush Holder Set Screw (2)
06-81-6300	8-32x7/8 Fil.Hd. Diaphragm Mtg. Sems (4)	12-98-5000	Name Plate
06-81-8650	6-32x1/4 Rd.Hd. Switch Mounting Sems (2)	06-81-4950	4-36x3/16 Truss Hd..Name Plate Screws (2)
06-81-5825	6-32x1/2 Fil.Hd. Gear Case Cover Sems	45-36-0250	Handle Spacer
06-81-5850	6-32x5/8 Fil.Hd. Gear Case Cover Sems (2)	48-03-0010	Plug Adaptor
06-81-6100	8-32x7/16 Fil.Hd. Bearing Plate Mtg. Sems (4)	49-96-0060	1/8 Socket Wrench
06-81-6400	8-32x1-1/8 Fil.Hd. Brg. Plate Mtg. Sems (2)	49-96-0080	3/16 Socket Wrench
06-81-4300	3-48x3/16 Rd. Hd. Name Plate (Identifying) (3)	48-66-4080	Rubber Flex Chuck Key Holder
06-81-8050	8-32x3/8 Flat Hd. Brg. Plate Cover Sems (4)	23-86-0070	Fiber Brush Holder Washer (2)
34-60-0550	Retaining Ring	23-48-7325	2' Long Lead Wire Insulating Sleeving (2)
06-85-0050	No. 4x1/4 P.K. Pan. Hd. Speed Control Name Plate Screws (4)	06-65-0630	3/16x1/2 Type E Drivlok Pin (2)
22-75-0070	Control Knob Dial	06-85-0250	No. 6x3/8 P.K Pan Hd. Regulator Mtg. Scrs. (2)
06-81-0675	6-32x7/8 Fil.Hd. Control Housing Mtg. Scr. (2)	06-55-1800	Nut (1/4-32 Thd., Incl. with item No. 40)

Numbers in brackets indicate number required.