



SERVICE PARTS LIST

SPECIFY CATALOG NO. AND SERIAL NO. WHEN ORDERING PARTS		REVISED BULLETIN	DATE
TSC BANDSAW		54-40-0118	Nov. 2011
CATALOG NO. 6227 / 6234	STARTING SERIAL NO. 674D	WIRING INSTRUCTION	
		58-01-0762	
SEE BULLETIN NO. 54-40-0200 FOR NEXT REVISION			

00 0

EXAMPLE:
 Component Parts
 (Small #) Are Included
 When Ordering The
 Assembly (Large #).

RECALL NOTICE!
 See back page for important safety information.

FIG.	PART NO.	DESCRIPTION OF PART	NO. REQ.
1	22-64-2000	Cord Set	(1)
2	44-76-0210	Cord Protector	(1)
3	31-17-0155	Cord Clamp	(1)
4	06-82-7270	8-16 x 5/8" Slit. Plastite Pan Hd. T-20	(2)
5	06-82-5292	1/4-20 x 7/8" Pan Hd. Tapt. T-30	(4)
6	31-44-0725	Right Handle Half	(1)
7	06-82-7270	8-16 x 5/8" Plastite Pan Hd. Slit. T-20	(4)
8	23-66-0770	Switch	(1)
9	31-44-0720	Left Handle Half	(1)
10	06-82-7252	8-32 x 3/8" Pan Hd. Slit. Tapt. T-20	(1)
11	28-62-0031	Blade Release Lever	(1)
12	06-42-2200	Woodruff Key	(1)
13	45-88-7105	Wave Washer	(1)
14	06-75-4675	3/8-16 x 1" Socket Hd. Screw	(1)
15	31-44-0330	Front Handle	(1)
16	23-44-0220	Brush Retaining Screw	(2)
17	22-16-0275	Carbon Brush	(2)
18	22-20-0020	Brush Tube Housing	(2)
19	06-82-8828	8-32 x 5/16" Pan Hd. Tapt. T-20	(1)
20	02-04-0851	Ball Bearing	(1)
21	31-55-0020	Coil Shield	(1)
22	31-05-0170	Fan Baffle	(1)
23	28-28-1485	Diaphragm	(1)
24	06-65-1155	3/16 x 5/8" Groove Pin	(1)
25	02-04-1050	Ball Bearing	(1)
26	16-30-0600	120 Volt Armature	(1)
27	06-82-7425	8-16 x 2" Slit. Pan Hd. Plast. T-20	(2)
★ 28	18-30-1600	120 Volt Field	(1)
29	23-16-0020	Field Insulator	(1)
30	28-50-6000	Motor Housing	(1)
31	28-90-0190	Pulley Support	(1)
32	06-82-5294	1/4-20 x 3/4" Pan Hd. Taptite T-30	(6)
33	45-36-0720	Retaining Plate Spacer	(4)
34	06-82-5394	5/16-18 x 13/16" Pan Hd. T-40	(1)
35	44-52-0120	Blade Backing Pad	(1)
36	42-12-0070	Blade Pulley Axle	(2)
37	44-66-0550	Pulley Guard Retaining Plate	(2)
38	40-50-0710	Blade Tension Spring	(2)
39	42-18-0190	Blade Tension Bar	(2)
40	06-75-1991	1/4-20 x 4" Hex. Hd. Cap Screw	(2)
41	06-82-3810	1/4-20 x 1-1/4" Flat Hd. Taptite T-27	(4)
42	06-82-5298	1/4-20 x 1" Pan Hd. Tapt. T-30	(2)
43	45-69-0010	Blade Pulley Tire	(2)
44	28-95-0120	Blade Pulley	(2)
45	45-88-7165	Pulley Hub Washer	(4)
46	34-60-1400	Snap Ring	(2)
47	06-82-3024	1/4-20 x 1/2" Fil Hd. Taptite T-30	(3)
48	25-20-1220	Blade Pulley Cover	(2)
49	42-40-0580	Sleeve Bearing	(4)
50	06-57-5000	1/4-20 Lock Nut	(2)

FIG.	PART NO.	DESCRIPTION OF PART	NO. REQ.
51	42-40-1010	Bronze Bushing	(1)
52	06-82-5574	10-24 x 7/8" Pan Hd. Tapt. T-25	(2)
53	02-25-0260	Cam Follower	(6)
54	42-28-0205	Front Blade Guide Block	(1)
55	28-41-0510	Front Pulley Guard	(1)
56	06-82-5330	10-32 x 5/8" Pan Hd. Tapt. T-25	(2)
57	14-73-0160	Blade Release Shaft Assy.	(1)
58	02-50-3235	Needle Bearing	(1)
59	-----	Bandsaw Blade - Select From Catalog	(1)
★ 60	06-82-9270	10-24 x 1/2" Pan Hd. Tapt. Shld. T-25	(1)
61	43-54-0250	Blade Guard	(1)
62	06-82-8864	10-24 x 1/2" Pan Hd. Sem T-25	(1)
63	06-83-2686	1/4-20 x 3/4" Set Screw	(1)
64	32-90-0103	Worm Gear	(1)
65	02-04-2000	Ball Bearing	(1)
66	34-40-3115	O-Ring	(1)
67	43-76-0360	Worm Gear Shaft Housing	(1)
68	02-50-6400	Needle Bearing	(1)
70	36-66-0510	Worm Gear Shaft	(1)
71	42-60-0100	Roller Chain	(1)
72	06-82-3060	1/4-20 x 1-5/16" Fil Hd. Tapt T-30	(3)
73	31-88-0010	Sprocket	(1)
74	06-82-8864	10-24 x 1/2" Pan Hd. Sem T-25	(2)
75	42-38-0031	Bumper	(1)
76	42-28-0210	Rear Blade Guide Block	(1)
77	28-14-2120	Gear Case	(1)
78	12-99-0250	Nameplate Blank	(1)
79	06-82-5270	Nameplate Screw	(2)
80	06-82-3060	1/4-20 x 1-5/16" Fil. Hd. Tapt. T-30	(4)
81	02-04-1030	Ball Bearing	(1)
85	36-18-0041	Worm Shaft	(1)
86	06-42-1200	Woodruff Key	(1)
87	32-40-1680	Intermediate Gear	(1)
88	02-04-1020	Ball Bearing	(1)
89	06-82-5394	5/16-18 x 13/16" Pan Hd. T-40	(1)
90	22-84-0531	Fan	(1)
91	23-16-1340	Insulator	(1)
92	22-20-0780	Brush Tube	(2)
93	23-52-0255	Brush Spring Assembly	(2)

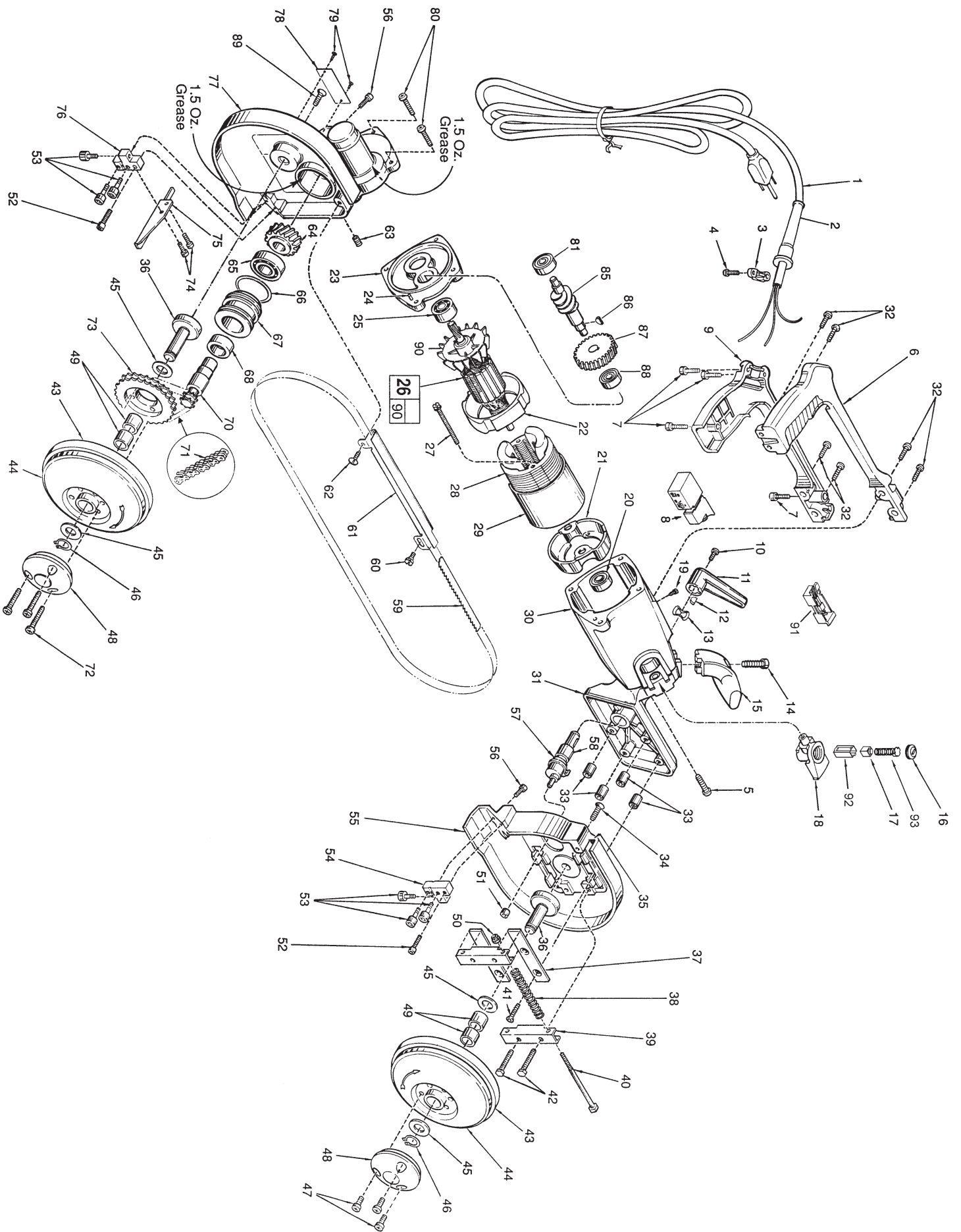
FIG. 39 NOTES
 Dimension Between Outside Edges of
 Blade Tension Bars 3-11/16" ± 1/16".

53 Torque to 20-30 In./Lbs.

10, 52 Apply Type 242 Blue Loctite.

56, 74, 34, 89 Apply Type 242 Blue Loctite,
 Torque to 75-115 In./Lbs.

FIG. 77 LUBRICATION
 3 Oz. Type "G" Grease, No. 49-08-4140.
 1.5 Oz. in each of two locations (See Illustration).



RECALL NOTICE-

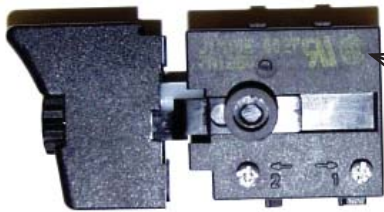
Milwaukee Electric Tool Corporation is providing a no-charge warranty service to owners of **6227 and 6230 Variable Speed Portable Electric Band Saws**. For operator safety, the Management of Milwaukee wants you to be aware of a potential product safety hazard existing in some **6227 and 6230 Variable Speed Portable Electric Band Saws**. The trigger switch may stick in the "on" position. This could subject an operator to a risk of injury.

6227 and 6230 Variable Speed Band Saws, within the serial number ranges shown below and sold between January 18, 2000 and September 15, 2000 are affected.

Catalog No. **6227** Serial Number **6 7 4 D 4 00060015** thru **674D400240167**

Catalog No. **6230** Serial Number **678E499520116** thru **678E400371101**

6230 and 6234 Variable Speed Band Saws, within the serial number ranges shown above **should be inspected** for the presence of a **23-66-0770** Switch with a date code within 0001 through 0034. If the unit contains a subject date coded 23-66-0770 switch, please return your Variable Speed Portable Electric Band Saw to the nearest Milwaukee **factory** Service Center or Authorized Service Station for no-charge warranty replacement of the switch.



manufacturers part number J1MT05 & date code 0001 thru 0034 location

If the nameplate has an 'X' stamped or etched into the tool's nameplate, next to the catalog number, the tool has been repaired and the defective switch has already been **replaced**.

If you need assistance in locating the service facility nearest you or have questions please call 1.800.729.3878