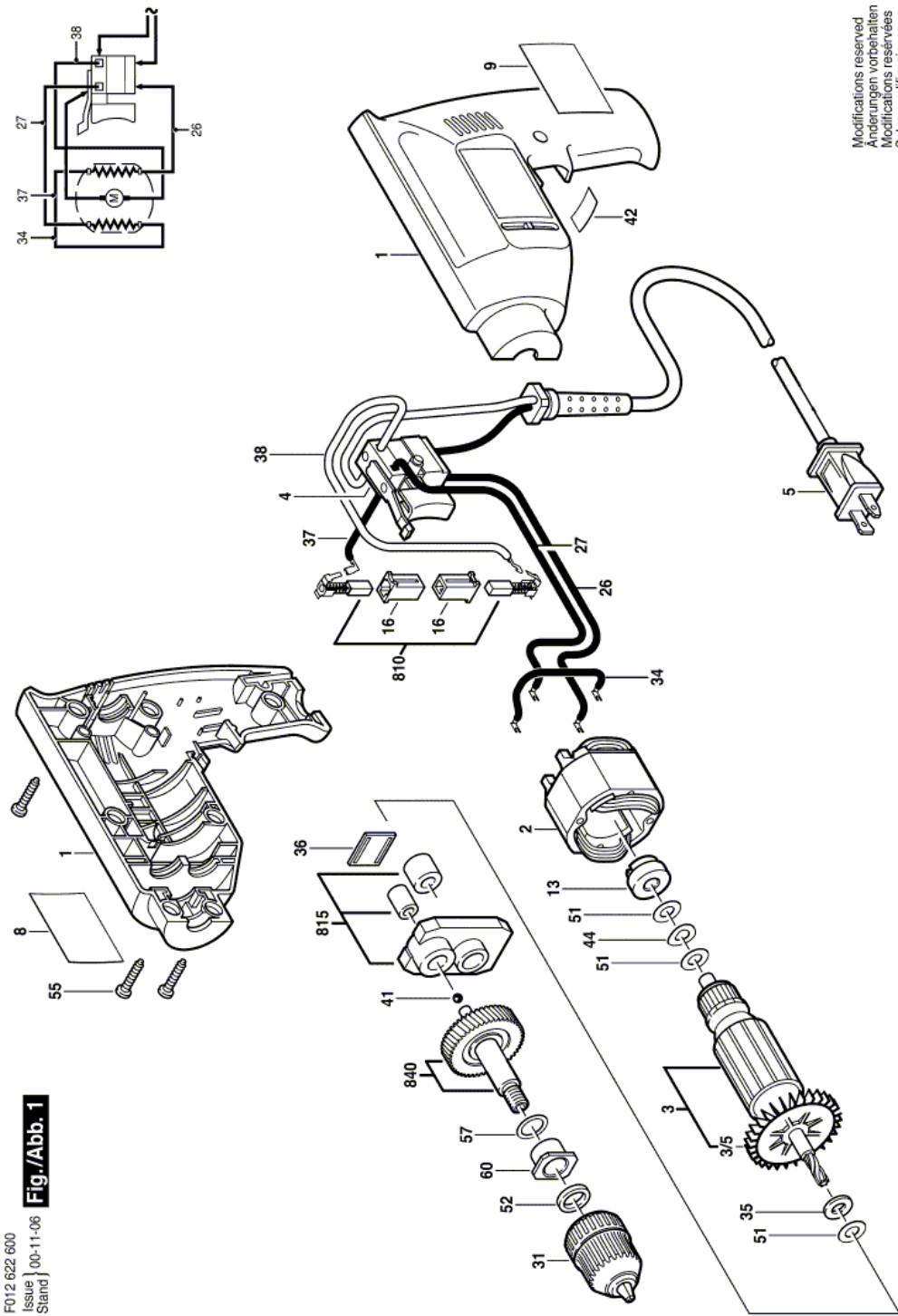


## Drill - F 012 622 600 - 6226 TYPE 1

Item	Part Number	Description	Illustration	Price	Quantity	Price Group
1	2 610 910 187	Housing Set	1	-,-	1	-
2	2 610 315 863	Field 120V	1	-,-	1	28
3	2 610 350 131	Armature 120V	1	-,-	1	33
3/5	2 610 346 332	Fan	1	-,-	1	-
4	2 610 346 618	On-Off Switch	1	-,-	1	29
5	1 619 X00 506	Power supply cord	1	-,-	1	-
8	2 610 905 855	Label	1	-,-	1	-
9	2 610 905 856	Nameplate	1	-,-	1	-
13	2 610 351 348	Bushing	1	-,-	1	13
16	2 610 320 548	Brush Holder	1	-,-	2	13
26	2 610 038 675	Connecting Cable	1	-,-	1	-
27	2 610 038 922	Connecting Cable BROWN	1	-,-	1	-
31	2 610 908 303	Chuck 3/8"	1	-,-	1	32
34	2 610 038 609	Connecting Wire BLACK	1	-,-	1	11
35	2 610 346 380	Washer	1	-,-	1	11
36	2 610 347 349	Reference Plate	1	-,-	1	15
37	2 610 039 904	Connecting Wire 130 MM BLACK	1	-,-	1	11
38	2 610 320 494	Connecting Wire 50 MM	1	-,-	1	11
41	2 610 002 144	Ball	1	-,-	1	11
42	2 610 902 145	Reference Plate	1	-,-	1	15
44	2 610 026 126	Washer	1	-,-	1	11
51	2 610 027 396	Washer	1	-,-	3	11
52	2 610 017 642	Washer	1	-,-	1	10
55	1 619 X00 504	Screw	1	-,-	7	10
57	2 610 347 358	Washer	1	-,-	1	11
60	2 610 352 019	Flanged Bearing	1	-,-	1	11
810	2 610 321 617	Carbon-Brush Set	1	-,-	1	24
815	2 610 347 363	Bearing Housing	1	-,-	1	21
840	2 610 993 502	Spindle	1	-,-	1	21

Illustration - Type E



F012 622 600  
Issue | 00-11-06  
Stand |  
**Fig./Abb. 1**

Modifications reserved  
Änderungen vorbehalten  
Modificaciones reservadas  
Salvo modificaciones

Information subject to change without further notice.