



SERVICE PARTS LIST

BULLETIN NO.
54-38-0425

SPECIFY CATALOG NO. AND SERIAL NO. WHEN ORDERING PARTS		REVISED BULLETIN	DATE
6" ANGLE GRINDER			Nov. 2005
CATALOG NO. 6160-20	STARTING SERIAL NUMBER A16A	WIRING INSTRUCTION See Reverse Side	

FIG.	PART NO.	DESCRIPTION OF PART	NO. REQ.
1	02-04-0852	Ball Bearing	(1)
2	02-04-1745	Ball Bearing	(1)
3	02-04-2080	Ball Bearing	(1)
4	02-50-2423	Needle Bearing	(1)
5	06-55-3850	Hex Nut	(1)

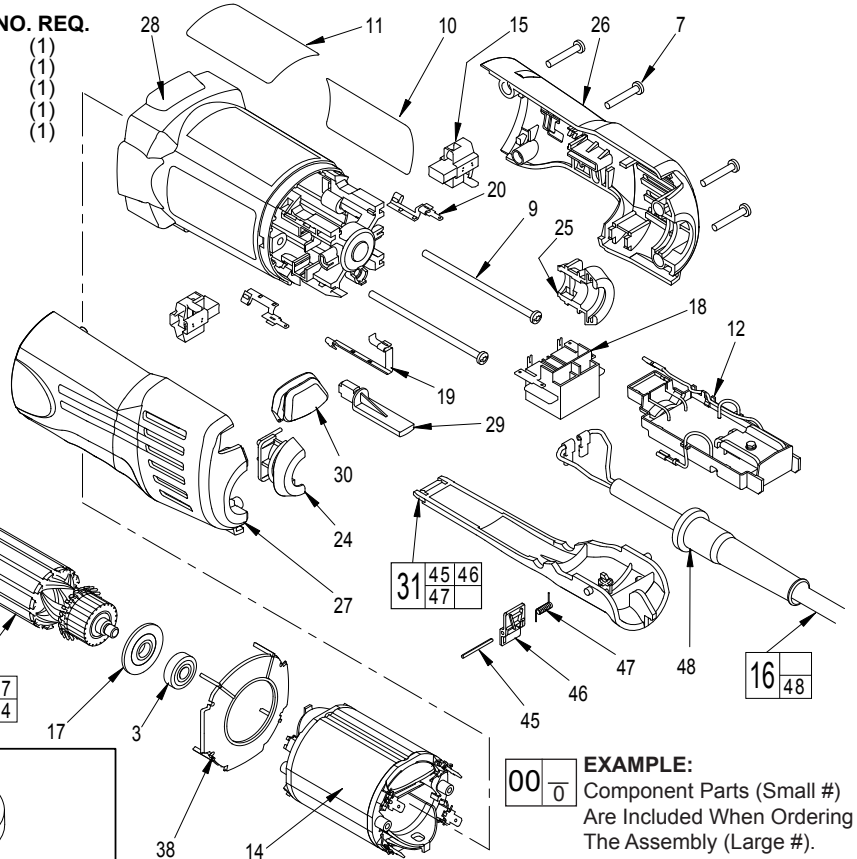
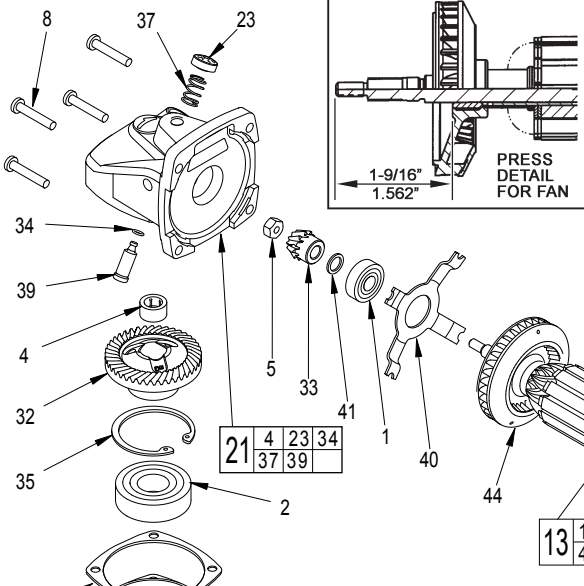


FIG.	PART NO.	DESCRIPTION OF PART	NO. REQ.
6	06-82-5316	8-32 x .50 Taptite T-20 Screw	(4)
7	06-82-7271	6-19 x .875 Slotted Plastite T-15	(4)
8	06-82-7326	8-16 x 1.00 Slotted Plastite T-20	(4)
9	06-82-7421	6-19 x 3.25 Slotted Plastite T-15	(2)
10	10-98-7095	Warning Label	(1)
11	12-99-1990	Service Nameplate Kit	(1)
12	14-20-3105	Electronics Assembly	(1)
13	16-10-2010	Armature	(1)
14	18-10-2005	Field	(1)
15	22-20-1010	Brush Holder Assembly (Incl. Brushes)	(2)
16	22-64-0845	Cord Set Assembly	(1)
17	23-27-0106	Magnet Assembly	(1)
18	23-66-2401	Switch	(1)
19	23-74-1201	Switch Terminal	(1)
20	23-74-1206	Brush Terminal	(2)
21	28-14-0705	Gear Case Assembly	(1)
22	28-53-0160	Spindle Hub	(1)
23	31-12-0205	Cap	(1)
24	31-17-0260	Cord Clamp - Left	(1)
25	31-17-0265	Cord Clamp - Right	(1)
26	31-44-0660	Handle Half - Right	(1)
27	31-44-0665	Handle Half - Left	(1)
28	31-50-1135	Motor Housing	(1)
29	31-53-0080	Plug	(1)
30	31-53-0150	Dial Opening Plug	(1)
31	31-92-0320	Paddle Assembly	(1)

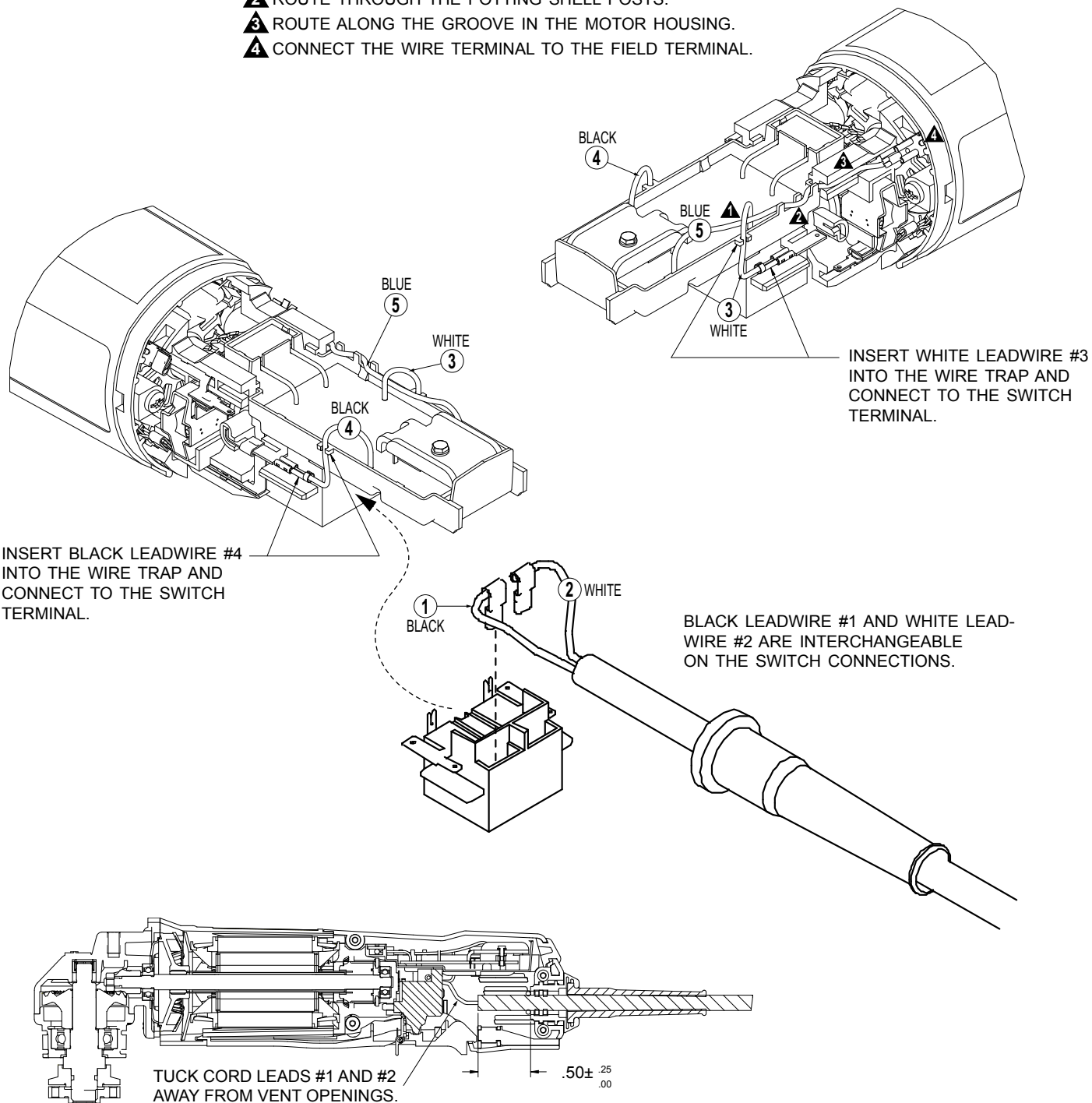
FIG.	PART NO.	DESCRIPTION OF PART	NO. REQ.
32	32-05-1310	Spiral Bevel Gear	(1)
33	32-60-1310	Spiral Bevel Pinion	(1)
34	34-40-4300	O-Ring	(1)
35	34-80-2960	Retaining Ring - Internal Bevel	(1)
36	38-50-5212	Spindle	(1)
37	40-50-8650	Compression Spring	(1)
38	42-14-0400	Baffle	(1)
39	44-60-0845	Lock Pin	(1)
40	44-66-5345	Bearing Retainer Plate	(1)
41	45-14-0280	Pinion Shim	(1)
42	49-05-0110	Flange Nut	(1)
43	49-05-0125	Back Flange	(1)
44	22-84-0960	Fan Assembly	(1)
45	06-65-1915	Pin	(1)
46	42-42-0390	Lock-Off Button	(1)
47	40-50-8750	Torsion Spring	(1)
48	44-76-0210	Cord Protector	(1)
49	45-36-1620	Spacer	(1)
50	44-20-0610	Guard Lever	(1)
51	40-50-1555	Compression Spring	(1)
52	28-41-1055	6" Guard Hood	(1)
53	06-82-7409	8-16 x .50 Slotted Plastite T-20	(5)
54	49-12-0300	6" Type 27 Guard	(1)
56	43-44-1080	Gasket	(1)
	49-15-0310	Side Handle	(1)
	49-96-7205	Spanner Wrench	(1)

FIG. LUBRICATION:
21 9-12 Grams Type "Y" Grease, No. 49-08-5270.
32,33 Type "Y" Grease, No. 49-08-5270, Must Be Applied To All Gear Teeth.

FIG. NOTES:
4 Press .09" Below Casting Surface, Lettering Side Out.
5 Torque To 25-35 In./Lbs.
22 Position The Spindle Hub With The Side That Has The Word "Back" Orientated Toward The Rear Of The Tool.

BLUE LEADWIRE #5 CONNECTION:

- ▲ 1 ROUTE THROUGH THE WHITE LEADWIRE #3 LOOP.
- ▲ 2 ROUTE THROUGH THE POTTING SHELL POSTS.
- ▲ 3 ROUTE ALONG THE GROOVE IN THE MOTOR HOUSING.
- ▲ 4 CONNECT THE WIRE TERMINAL TO THE FIELD TERMINAL.



WIRING SPECIFICATIONS

Wire No.	Wire Color	Origin or Gauge	Length	Terminals, Connectors and 1 or 2 End Wire Preparation
1	Black	22-64-0845	2.75	Component of the cord set.
2	White	22-64-0845	2.75	Component of the cord set.
3	White	14-20-3105	2.00	Component of the electronics assembly.
4	Black	14-20-3105	2.13	Component of the electronics assembly.
5	Blue	14-20-3105	4.00	Component of the electronics assembly.

TERMINAL DESCRIPTOR

Code	Part No.	Qty.