

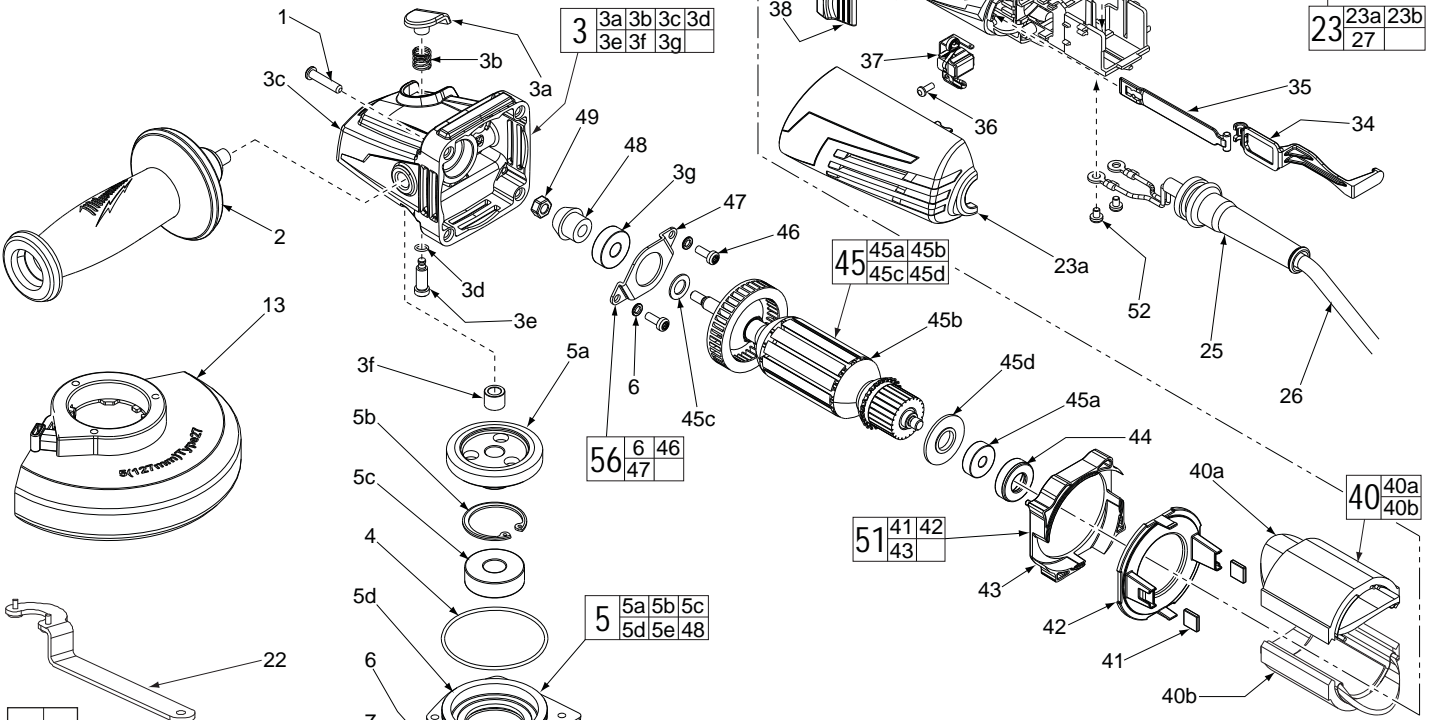


# SERVICE PARTS LIST

**BULLETIN NO.**  
55-38-6160

|  |                 |   |             |
|--|-----------------|---|-------------|
| SPECIFY CATALOG NO. AND SERIAL NO. WHEN ORDERING PARTS |                 | REVISED BULLETIN                              | DATE        |
| <b>115mm COMPACT ANGLE GRINDER with SLIDE SWITCH</b>   |                 |   | Mar. 2016   |
| CAT. NO.   | <b>6149-59B</b> | STARTING SERIAL NUMBER                        | <b>E38A</b> |
|  |                 | WIRING INSTRUCTION<br><b>See Reverse Side</b> |             |

| FIG. | PART NO.   | DESCRIPTION OF PART             | NO. REQ. |
|------|------------|---------------------------------|----------|
| 1    | 05-88-1650 | M4 x 25mm Pan Hd. ST Screw T-20 | (4)      |
| 2    | 42-62-0120 | Side Handle Assembly            | (1)      |
| 3    | 14-30-1155 | Gearcase Assembly               | (1)      |
| 3a   | -----      | Spindle Lock Button             | (1)      |
| 3b   | -----      | Spindle Lock Spring             | (1)      |
| 3c   | -----      | Gearcase                        | (1)      |
| 3d   | -----      | O-Ring                          | (1)      |
| 3e   | -----      | Spindle Lock Pin                | (1)      |
| 3f   | -----      | Needle Bearing                  | (1)      |
| 3g   | 02-04-0620 | Ball Bearing                    | (1)      |
| 4    | 34-40-0560 | O-Ring                          | (1)      |



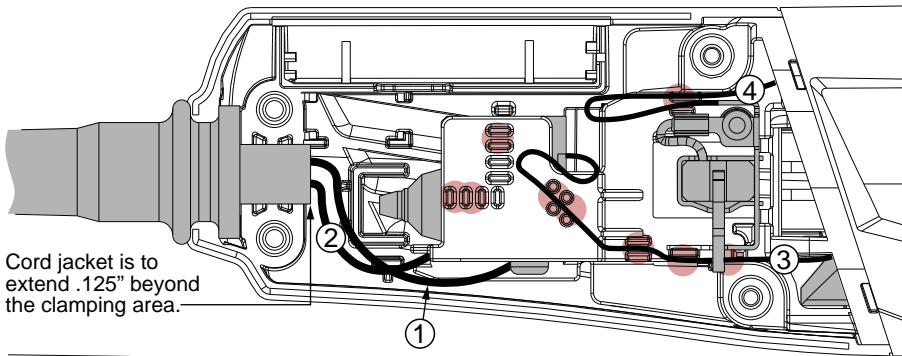
**EXAMPLE:**  
Component Parts (Small #)  
Are Included When Ordering  
The Assembly (Large #).

**\*LUBRICATION NOTE:**  
When servicing the Gears (5a & 48)  
or the Gearcase (3c), 90-95% of the  
old grease must be removed prior  
to new grease being added.

**FIG. LUBRICATION\***  
5a,48 Type "Y" Grease, No. 49-08-5270,  
Must Be Applied To All Gear Teeth.

|     |            |                                     |     |
|-----|------------|-------------------------------------|-----|
| 5   | 14-46-0418 | M14 Spindle Hub Kit                 | (1) |
| 5a  | -----      | Spiral Bevel Gear                   | (1) |
| 5b  | -----      | Retaining Ring                      | (1) |
| 5c  | -----      | Ball Bearing                        | (1) |
| 5d  | -----      | Spindle Hub                         | (1) |
| 5e  | -----      | M14 Spindle                         | (1) |
| 6   | 05-90-0225 | Spring Washer                       | (6) |
| 7   | 05-88-1210 | M4 x 14mm Pan Hd. Mach. Screw T-20  | (4) |
| 13  | 14-32-0210 | 4.5" Type 27 Guard Assembly (Shown) | (1) |
| 13  | 43-54-0920 | 4.5" Type 1 Guard Assy. (Not Shown) | (1) |
| 15  | -----      | O-Ring                              | (1) |
| 16  | -----      | Wavey Spring                        | (1) |
| 17  | -----      | Flange with Ramps                   | (1) |
| 18  | -----      | Retaining Ring                      | (1) |
| 19  | 43-34-0935 | Inner Disc Flange                   | (1) |
| 21  | 44-40-0035 | Outer Flange Nut                    | (1) |
| 22  | 49-96-0015 | Spanner Wrench                      | (1) |
| 23  | 14-34-6110 | Rear Handle Set                     | (1) |
| 23a | -----      | Left Handle Halve                   | (1) |

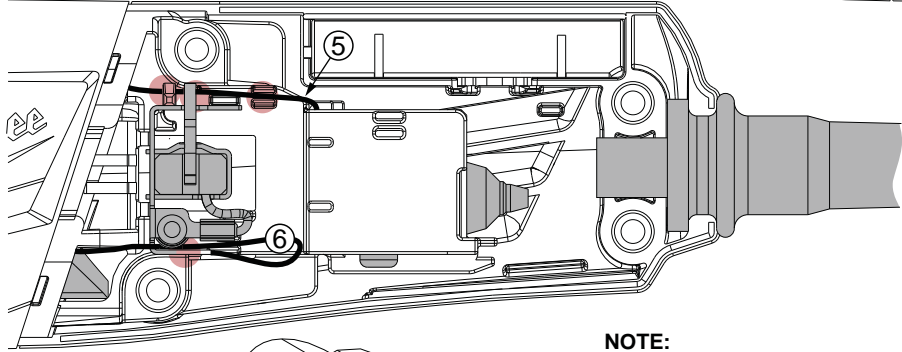
| FIG. | PART NO.   | DESCRIPTION OF PART                  | NO. REQ. |
|------|------------|--------------------------------------|----------|
| 23b  | -----      | Right Handle Halve                   | (1)      |
| 25   | 44-76-0095 | Cord Protector                       | (1)      |
| 26   | 22-64-3445 | Power Cord                           | (1)      |
| 27   | 05-88-1300 | M4 x 28mm Pan Hd. ST Screw T-20      | (4)      |
| 33   | 23-66-2665 | On-Off Switch                        | (1)      |
| 34   | 31-84-0080 | Slide Pole - Back                    | (1)      |
| 35   | 31-84-0085 | Slide Pole - Front                   | (1)      |
| 36   | 05-88-0030 | M3 x 8.5mm Pan Hd. ST Screw T-10     | (2)      |
| 37   | 22-18-2240 | Carbon Brush Assembly (Set of 2)     | (1)      |
| 38   | 31-89-0245 | Slide Switch Button                  | (1)      |
| 39   | 31-50-0675 | Motor Housing                        | (1)      |
| 40   | 18-07-0275 | Field Assembly                       | (1)      |
| 40a  | -----      | Field Halve                          | (1)      |
| 40b  | -----      | Field Halve                          | (1)      |
| 41   | 42-28-0085 | Rubber Block                         | (2)      |
| 42   | -----      | Baffle Foot                          | (1)      |
| 43   | -----      | Baffle                               | (1)      |
| 44   | 42-96-0016 | Rubber Bearing Cap                   | (1)      |
| 45   | 16-10-0850 | Armature Assembly                    | (1)      |
| 45a  | 02-04-2110 | Ball Bearing                         | (1)      |
| 45b  | -----      | Armature                             | (1)      |
| 45c  | 45-88-0406 | Washer                               | (1)      |
| 45d  | 31-86-0090 | Plastic Disc                         | (1)      |
| 46   | 05-88-1280 | M4 x 10mm Pan Hd. Mach. Screw T-20   | (2)      |
| 47   | 44-86-0155 | Bearing Retainer                     | (1)      |
| 48   | -----      | Pinion                               | (1)      |
| 49   | 05-55-0620 | M5 Hex Nut                           | (1)      |
| 50   | 14-46-6105 | Flange with Ramps Assembly           | (1)      |
| 51   | 42-14-0520 | Baffle Assembly                      | (1)      |
| 52   | 05-78-0305 | M3.5 x 7mm Pan Hd. Phil. Switch Scr. | (2)      |
| 56   | 44-86-0145 | Bearing Retaining Plate Assembly     | (1)      |



Cord jacket is to extend .125" beyond the clamping area.

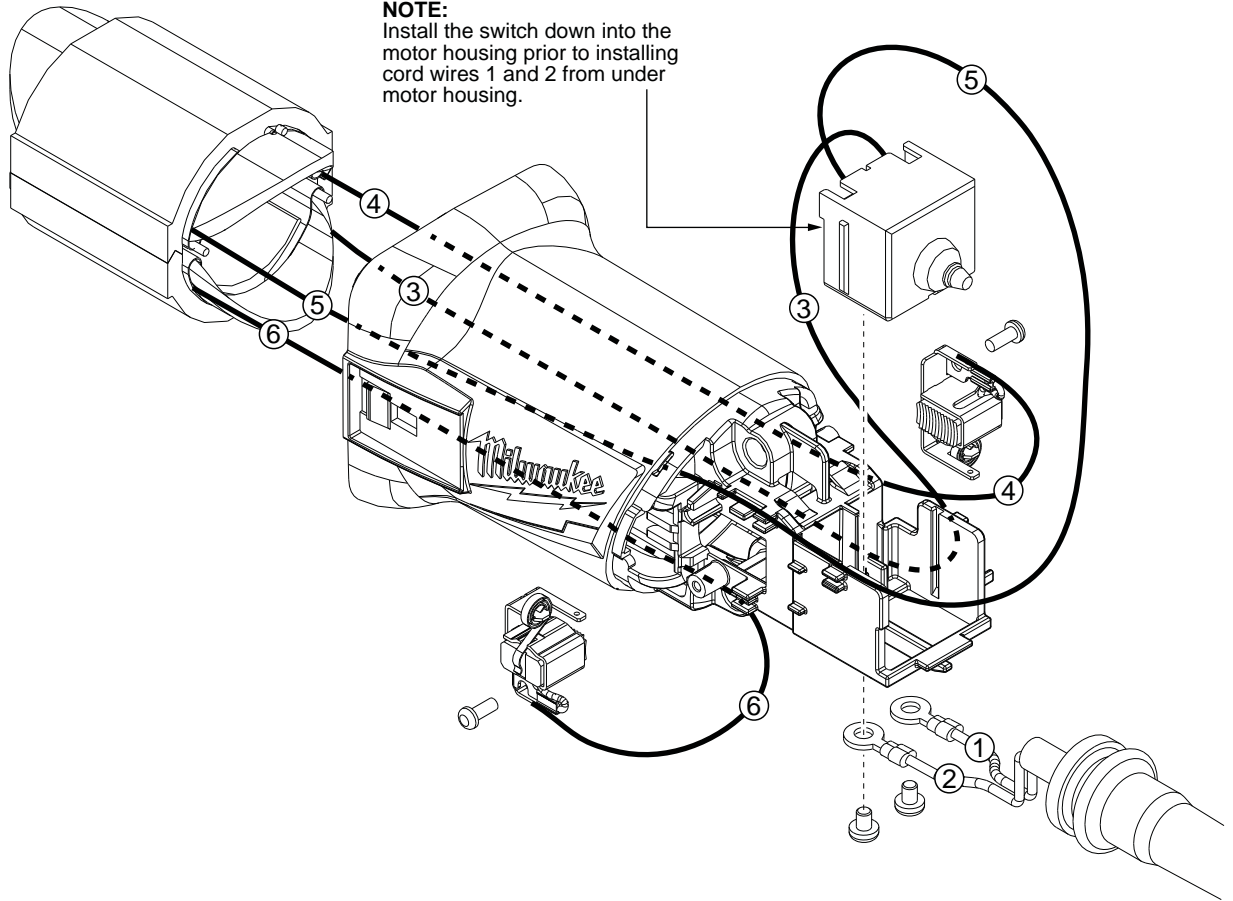
AS AN AID TO REASSEMBLY, TAKE NOTICE OF WIRE ROUTING AND POSITION IN WIRE GUIDES AND TRAPS WHILE DISMANTLING TOOL.

BE CAREFUL AND AVOID PINCHING WIRES BETWEEN HANDLE HALVES WHEN ASSEMBLING.



● = WIRE TRAPS or GUIDES

**NOTE:**  
Install the switch down into the motor housing prior to installing cord wires 1 and 2 from under motor housing.



**NOTE:**  
All leads must be held to  $\pm 1/16"$ .  
All lead lengths are before stripping.

### WIRING SPECIFICATIONS

| Wire No. | Wire Color | Origin or Part No. | Gauge | Length | Terminals, Connectors and End Wire Preparation   |
|----------|------------|--------------------|-------|--------|--|
| 1        | Blue       | 22-64-3445         | --    | --     | Component of Cord Set. Connect to Switch.        |
| 2        | Brown      | 22-64-3445         | --    | --     | Component of Cord Set. Connect to Switch.        |
| 3        | Black      | 18-04-2215         | --    | --     | Component of Field. Connect to Switch.           |
| 4        | Black      | 18-04-2215         | --    | --     | Component of Field. Connect to Right Brush Assy. |
| 5        | Black      | 18-04-2215         | --    | --     | Component of Field. Connect to Switch.           |
| 6        | Black      | 18-04-2215         | --    | --     | Component of Field. Connect to Left Brush Assy.  |

BULK LEAD WIRE - BULLETIN 58-01-0003

### TERMINAL DESCRIPTION

| Code                         | Part No. | Qty. |
|------------------------------|----------|------|
|                              |          |      |
|                              |          |      |
|                              |          |      |
| <b>CONNECTOR DESCRIPTION</b> |          |      |
|                              |          |      |
|                              |          |      |
|                              |          |      |